

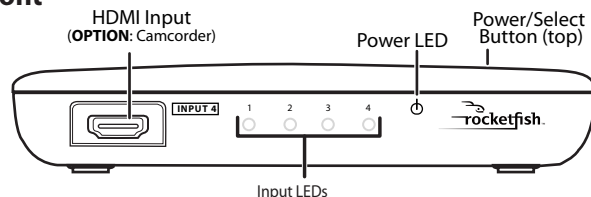
Package contents

- 4-port HDMI Switcher
- AC power adapter
- Remote control and battery
- Quick Setup Guide

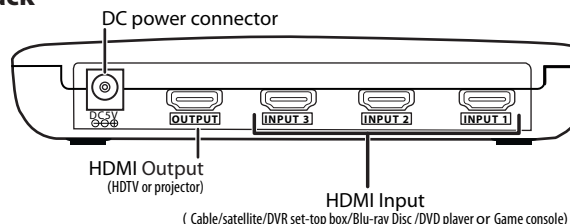
Features

- Full HD 1080p video compatibility
- Auto HDMI port switching for simple operation
- HDCP compliant to ensure playback of any content
- DTS® HD, Dolby® TrueHD lossless digital audio compatibility
- One front panel HDMI input for easy connection of portable HDMI devices
- 3D video compatibility
- Gold plated connectors for maximum signal transfer and corrosion resistance
- Remote control for manual HDMI port switching when needed
- Compatibility with CEC enabled HDMI devices

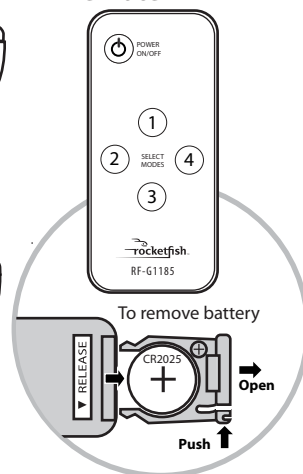
Front



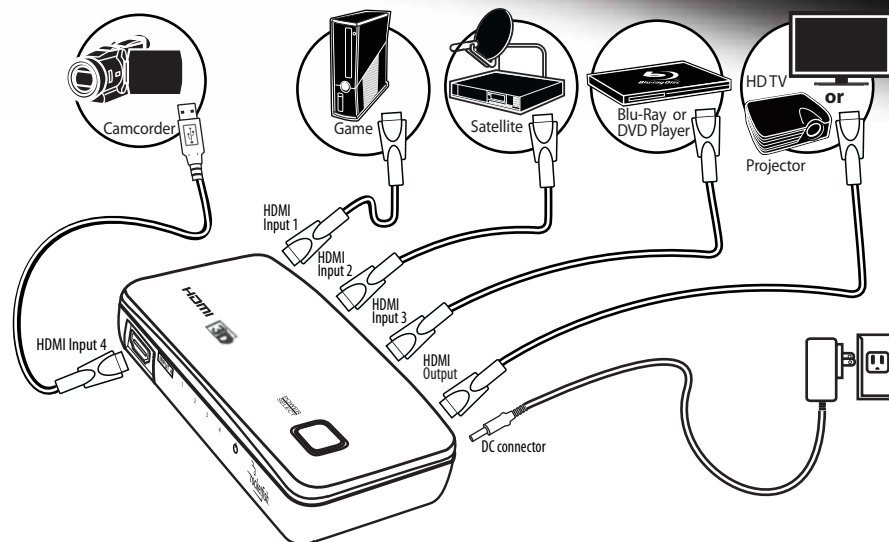
Back



Remote



In addition to the flexibility of additional HDMI inputs, this product also provides automatic HDMI port switching. The included remote control is for manual HDMI port switching when needed.



NOTE: If you want to watch 3D video, make sure that your TV or projector supports the same HDMI 3D video format as your source. A 3D image cannot be delivered to a TV or projector that does not support 3D video formats. You also need to use HDMI cables that are compatible with 3D video, such as Rocketfish high-speed HDMI cables.

Using your switcher

- 1 Press the **POWER** button on the remote control or press and hold the **POWER/SELECT** button on your switcher for at least two seconds. The power LED lights red.
- 2 Turn on your TV or projector, then switch to the HDMI input that your switcher is connected to. If you are uncertain how to do this, see the documentation that came with your TV or projector.
- 3 Turn on the HDMI device that you want to view. The auto-switching feature of your switcher should automatically switch to that input, and the corresponding LED lights green. However, some HDMI source devices are not compatible with auto-switching technology. If needed, press the number on the remote control you want to switch to, or repeatedly press the **POWER/SELECT** button on your switcher to toggle through the HDMI inputs until the correct input is selected and the corresponding LED indicator lights green.

Setting up your switcher

- 1 Using high-speed HDMI cables, such as Rocketfish brand HDMI cables, connect one end of the HDMI cable to the HDMI port on each source devices, then connect the other end of each cable to one of the HDMI INPUTS on your switcher
- 2 Connect a high-speed HDMI cable from an available input on your HDTV (or projector) to the HDMI OUTPUT of your switcher.
- 3 Connect the AC power adapter to the DC power connector on your switcher, then plug the adapter into a power outlet.

Troubleshooting

Symptom	Possible solution
LED are not on or lit	<ol style="list-style-type: none"> 1 Make sure your switcher is plugged in and turned on. 2 Make sure that all the devices are plugged in and turned on. 3 Make sure all cables are securely connected to the device and the switcher.
No video and/or audio	<ol style="list-style-type: none"> 1 Make sure that your DVD movie is original. HDMI includes HDCP copy protection, which prevents playback of illegally copied movies. 2 Make sure that the HDMI cable is not broken and is securely connected. 3 Make sure that the audio and video formats of the content being used (such as a Blu-ray disc) are supported by the source and destination devices you are using. 4 Make sure that your TV or projector is set to the input that the switcher is connected to. 5 Make sure that you are using high-speed HDMI cables for all connections. We recommend high-quality Rocketfish HDMI cables, available at your local Best Buy or Future Shop stores in lengths from 4 to 24 feet. 6 Unplug the HDMI switcher's AC power adapter, then plug it back in again. 7 Make sure your switcher is plugged in and turned on.
Video has some noise	<ol style="list-style-type: none"> 1 Make sure that you are using high-speed HDMI cables for all connections. We recommend high-quality Rocketfish HDMI cables, available at your local Best Buy or Future Shop stores in lengths from 4 to 24 feet. 2 Make sure that the TV or projector can support the same video resolution that the source devices are using. 3 Make sure the HDMI cables are not broken and they are securely connected.

Specifications

HDMI version	1.4A
Video amplifier bandwidth	225 MHz / 6.75 Gbps
Video Resolution	480i to 1080p from source device
HDMI HDCP compliant	Pass HDCP data between source and monitor
Power consumption	5 W (maximum)
Power supply	5V DC/1000 mA
Dimensions	2.8 x 2.9 x 1 in. (147 x 73.5 x 26 mm)
Shipping weight	.82 lb. (.372 kg)

Legal notices

HDMI, the HDMI Logo, and High-Definition Multimedia Interface are trademarks or registered trademarks of HDMI Licensing LLC in the United States and other countries.

Dolby is a registered trademark of Dolby Laboratories.

DTS is a registered trademark & the DTS logos and Symbol are trademarks of DTS, Inc.

FCC

This equipment has been tested and found to comply with the limits for a Class B digital device, pursuant to Part 15 of the FCC Rules. These limits are designed to provide reasonable protection against harmful interference in a residential installation. This equipment generates, uses, and can radiate radio frequency energy and, if not installed and used in accordance with the instructions, may cause harmful interference to radio communications. However, there is no guarantee that interference will not occur in a particular installation. If this equipment does cause harmful interference to radio or television reception, which can be determined by turning the equipment off and on, the user is encouraged to try to correct the interference by one or more of the following measures:

- Reorient or relocate the receiving antenna.
- Increase the separation between the equipment and receiver.
- Connect the equipment into an outlet on a circuit different from that to which the receiver is connected.
- Consult the dealer or an experienced radio/TV technician for help.

FCC Warning: Changes or modifications not expressly approved by the party responsible for compliance could void the user's authority to operate the equipment.

1-year limited warranty

Visit www.rocketfishproducts.com for details.

Contact Rocketfish:

www.rocketfishproducts.com

For customer service, call 800-620-2790 (U.S./Canada markets)

© 2011 BBY Solutions, Inc., All Rights Reserved.

Distributed by Best Buy Purchasing, LLC 7601 Penn Avenue South, Richfield, MN USA 55423-3645

ROCKETFISH is a trademark of BBY Solutions, Inc. All other products and brand names are trademarks of their respective owners.