



USB 3.0 Display Adapter

Datasheet

JUA 310/330/330U/350/315/355

Windows/Mac



INTRODUCTION

The **j5create USB 3.0 Display Adapter** acts as an external video card for your MAC or PC. It allows you to add an additional monitor/display through your USB 3.0 port. No need to open up the computer to add an expensive video card, with the **USB 3.0 Display Adapter** you simply load the drivers, plug in the adapter to the USB port, then plug in the VGA or DVI or HDMI monitor cable into the adapter and you are ready. The **j5create USB 3.0 Display Adapter** supports three viewing modes. Primary mode, allows you to have individual applications open on each monitor, vastly improving productivity. Extended mode allows you to extend your desktop across multiple displays, great for spreadsheets. Mirroring mode is used to clone one screen onto another, ideal for presentations. With "Plug & Play" functionality between your computer and 2nd monitor or projector, you will be able to create a new visual environment in seconds.

In addition, **j5create** has developed this compact design for the sophisticated user who cares about function as well as elegance

Functions

- ✧ Easily add an additional display instantly through the USB3.0 and VGA/DVI/HDMI connection.
- ✧ Video playback performs at 1080P HD with a resolution of up to 2048 x 1152.
- ✧ Add an additional monitor without adding an expensive, internal video card, avoiding complicated installation
- ✧ Hot swappable USB enables you to add or remove monitors without rebooting your system
- ✧ Move and view your large spreadsheets across two screens without overlapping windows
- ✧ Multitask with larger landscape/desktop space
- ✧ Ideal for viewing multiple windows at the same time
- ✧ Great for multitasking in a wide variety of applications including: Phone centers, Stock Markets, Hospitals, Graphic Design, Editing, Accounting, Etc.
- ✧ A must have for surfing the web and working on your email/facebook/twitter accounts all at the same time.

Highlighted Features

- ✧ Supports display resolution: 2048 x 1152 @ 32bit
- ✧ Super Speed USB 3.0 up to 5 Gbit/s
- ✧ Supports 1080P Video Playback
- ✧ Plug-and-Play USB connectivity
- ✧ Allows for up to 4 adapters in Windows
- ✧ Allows for up to 2 adapters in Macs
- ✧ Supports Display Modes: Primary, Extended, Mirror
- ✧ Display Rotation: 0°, 90°, 180°, 270°
- ✧ Audio imbedded 8kHz~48kHz(JUA350)
- ✧ Aluminum enclosure that is non-toxic and recyclable
- ✧ Easy driver install

Usage Editor:

- Efficient editing of documentation on one screen and researching reference materials on the other

Presentation:

- Use mirror mode while your laptop is plugged into a projector through the **USB 3.0 Display Adapter**
- Use Primary mode to have two monitors and projector for creative displays

Office:

- Dual display scenario: view large spreadsheets across 2 screens with display continuity. (For example: Excel document)
- Independent: using desk space and doing multi-job at the same time-increase efficiency.
- Read and reply to email on one screen and open attachments on the other

Graphics Workstation:

- Design and check reference material at the same time.
- More space for tablets and photo/video editing

Entertainment:

- Watch TV/Movie while searching the program preview
- Play games online on one screen with the strategy guide on the other screen

Stock Market Trading:

- Monitor multiple stock markets and market news simultaneously

Coding/Programming:

- Allows effective code programming on one screen and software program companion on the other screen.

Required Environments

- ✧ Microsoft Windows 10/ 8.1/ 8/ 7/ XP (32-bit or 64-bit) Compatible
- ✧ Mac OS X 10.6~10.11 Compatible
- ✧ Available USB 3.0/2.0 port (USB 3.0 recommended)
- ✧ Minimum System Requirements

QTY	1~2 Dongle	3 ~ 4 Dongles
CPU	Intel i3 Dual Core 2.4 GHz or above	Intel i5 Dual Core 1.6 GHz or above
RAM	2GB or Higher	4GB or Higher
Full HD Video	Playing Video on the extended monitor CPU: Intel i5 Quad Core 3.10 GHz or above RAM: 4 GB or higher ※ Higher Processor recommended for Multi-Displays and optimal performance.	

Noted:

USB Hub is not recommended for USB 3.0 Display Adapter

Note for Video Player:



***Windows 7 user:** "Windows Media Player" is recommended for video playback



***Windows XP user & MAC user:** Windows XP & MAC products are not supported by USB 3.0 at this time, therefore we suggest USB 2.0 for 'office application' only; Video Playback is not recommend due to USB 2.0 bandwidth limitations causing limited video performance.

Note:

To ensure that your device is equipped with the most current driver, please visit our website at www.j5create.com and install the latest driver for this model.

Physical Specifications

 A black rectangular USB 3.0 to VGA adapter with a USB 3.0 male connector on one end and a 15-pin female VGA connector on the other. The J5create logo is visible on the top surface.	
Model: JUA310	
Interface	
Host Interface	USB 3.0 Male Type-A Connector
Video Interface	VGA-DB 15 pin Female Connector
Power	
Power Mode	Bus-powered
Power Consumption	≤500mA
Physical Specification	
Housing Material	Aluminum
Dimensions	Main body: 41(W)x 72(H)x14(D) mm Cable length: 200 mm
Weight	Approximately 56 g
 A black rectangular USB 3.0 to DVI-I adapter with a USB 3.0 male connector on one end and a DVI-I female connector on the other. The J5create logo is visible on the top surface.	
Model: JUA330	
Interface	
Host Interface	USB 3.0 Male Type-A Connector
Video Interface	DVI-I Female Connector
Power	
Power Mode	Bus-powered
Power Consumption	≤500mA
Physical Specification	
Housing Material	Aluminum

Dimensions	Main body: 41 (W)x 72(H)x14(D) mm Cable length: 200 mm	
Weight	Approximately 56 g	
<div></div>		
Model: JUA350		
Interface		
Host Interface	USB 3.0 Male Type-A Connector	
Video & Audio Interface	HDMI Female Connector DVI Converter is included	
Power		
Power Mode	Bus-powered	
Power Consumption	≤500mA	
Physical Specification		
Housing Material	Aluminum	
Dimensions	Main body: 41 (W)x 72(H)x14(D) mm Cable length: 200 mm	
Weight	Approximately 53 g	
<div></div>		
Model: JUA330U		
Interface		
Host Interface	USB 3.0 Male Type-A Connector	
Video & Audio Interface	DVI-I Female Connector HDMI / VGA Converter are included (HDMI without audio)	
Power		
Power Mode	Bus-powered	
Power Consumption	≤500mA	
Physical Specification		
Housing Material	Aluminum	
Dimensions	Main body: 41 (W)x 72(H)x14(D) mm Cable length: 200 mm	
Weight	Approximately 56 g	



Model: JUA315

Interface

Host Interface	USB 3.0 Male Type-A Connector
Video Interface	VGA-DB 15 pin Female Connector

Power

Power Mode	Bus-powered
Power Consumption	$\leq 500\text{mA}$

Physical Specification

Housing Material	Aluminum
Dimensions	Main body: 23.4(W)x6 7.72(H)x14.45(D) mm Cable length: 129.5 mm
Weight	Approximately 34 g



Model: JUA355

Interface

Host Interface	USB 3.0 Male Type-A Connector
Video & Audio Interface	HDMI Female Connector

Power

Power Mode	Bus-powered
Power Consumption	$\leq 500\text{mA}$

Physical Specification

Housing Material	Aluminum
Dimensions	Main body: 23.4(W)x6 7.72(H)x14.45(D) mm Cable length: 129.5 mm
Weight	Approximately 33.5 g

Resolutions and Color Depth

Aspect Ratio	Resolution	Color Depth
Wide Screen Display		
16:9	2048 x 1152	16,32 bits
16:10	1920 x 1200	16,32 bits
16:9	1920 x 1080	16,32 bits
16:10	1680 x 1050	16,32 bits
16:9	1600 x 900	16,32 bits
16:10	1440 x 900	16,32 bits
16:9	1360 x 768	16,32 bits
16:10	1280 x 800	16,32 bits
15:9	1280 x 768	16,32 bits
16:9	1280 x 720	16,32 bits
Standard Display		
4:3	1600 x 1200	16,32 bits
4:3	1400 x 1050	16,32 bits
5:4	1280 x 1024	16,32 bits
4:3	1280 x 960	16,32 bits
4:3	1152 x 864	16,32 bits
4:3	1024 x 768	16,32 bits
4:3	800 x 600	16,32 bits

Package Contents

USB 3.0 VGA Display Adapter (JUA310)
Quick Installation Guide
Driver CD with E-Manual
USB 3.0 DVI Display Adapter (JUA330)
Quick Installation Guide
Driver CD with E-Manual
USB3.0 HDMI Display Adapter (JUA350)
HDMI to DVI Convertor
Quick Installation Guide
Driver CD with E-Manual
USB3.0 DVI Display Adapter (JUA330U)
DVI to HDMI Convertor
DVI to VGA Convertor
Quick Installation Guide
Driver CD with E-Manual
USB 3.0 VGA SLIM Display Adapter (JUA315)
Quick Installation Guide
Driver CD with E-Manual
USB 3.0 HDMI SLIM Display Adapter (JUA355)
Quick Installation Guide
Driver CD with E-Manual

DISPLAY MODES



Extended mode

Extend your primary monitor to a 2nd monitor



Primary mode

Choose the external DVI port as a primary display



Mirror Mode

Enable initial and second screen to show same display simultaneously

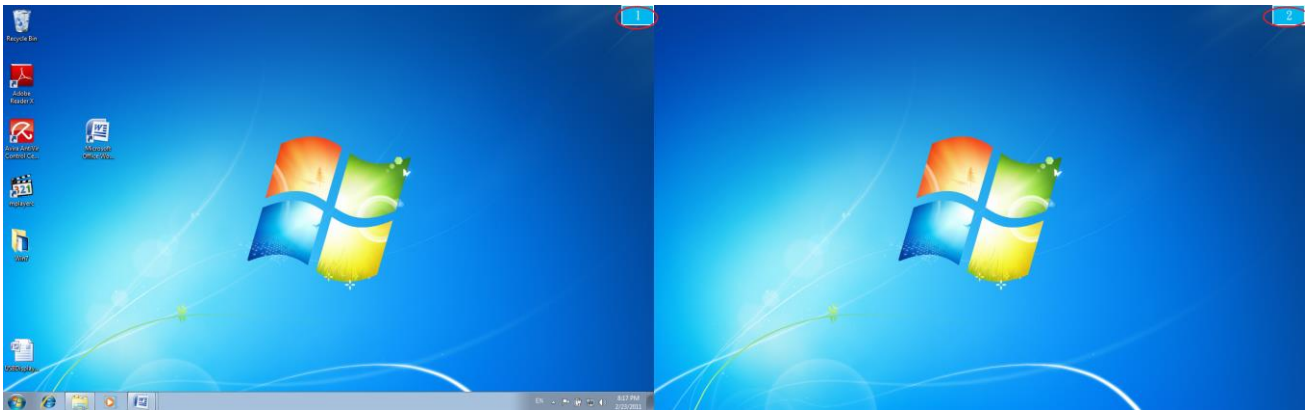


Rotation Mode

Rotate screen for better view of long document in vertical monitor

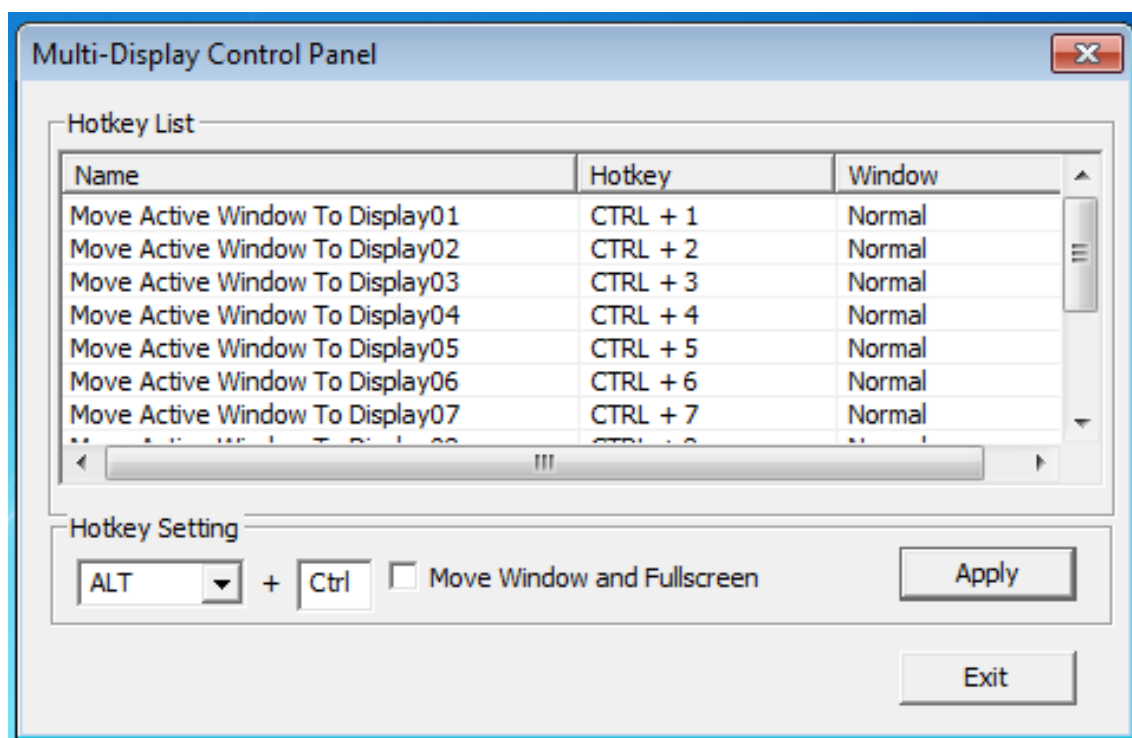
Identify Monitors

A serial number will be shown in the upper right-hand corner of the display devices. You can see the serial number of each display when using the Hotkey function.



Multi-Display Control Panel

This unique feature provides a simpler working experience for multi-display environments. A series of Hotkey settings help you to move quickly between desired display devices.



REGULATORY COMPLIANCE

FCC

This equipment has been tested and found to comply with FCC Part 15 Subpart B § 15.109/15.107 Class B.

Operation is subject to the following two conditions:

- This device may not cause harmful interference
- This device must accept any interference, including interference that may cause undesired operation of the device.

CE

This equipment is in compliance with the requirements of the following regulations:

EN 55022 Class B (2006),

EN 55024 (1998+A1:2001+ A2:2003), (IEC/EN 61000-4-2 (1995+A1:1998+A2:2001))/-3(2006)

C-Tick

This equipment is in compliance with the requirements of the following regulations:

EN 55022 (2006) Class B, AS/NZS CISPR22 © IEC: 2005.

VCCI

This equipment is in compliance with the requirements of the following regulations:

CISPR22 © IEC: 2005

Disclaimer

Information in this document is subject to change without notice. The manufacturer does not make any representations or warranties (implied or otherwise) regarding the accuracy and completeness of this document and shall in no event be liable for any loss of profit or any commercial damage, including but not limited to special, incidental, consequential, or other damage. No part of this document may be reproduced or transmitted in any form by any means, electronic or mechanical, including photocopying, recording or information recording and retrieval systems without the expressed written permission of the manufacturer.

WARRANTY OF j5create

j5create offers a limited 1-year warranty. User's wear & tear damage is not included.

The user shall call or email **j5create** customer service with defect information of the product and obtain a return authorization number.

Users are responsible for one way return freight cost and we will take care of one way freight back.

In order to obtain a return authorization, user should have the following information handy when calling or emailing the service team:

- (i) a copy of original purchase invoice to verify your warranty
- (ii) a product serial number
- (iii) a description of the problem
- (iv) a return Material authorization number
- (v) customer's Name, address, and telephone number

j5create does not warrant that the operation of the product will be uninterrupted or error-free. **j5create** is not responsible for damage arising from failure to follow instructions relating to the product's use. This warranty does not apply to: (a) consumable parts, unless damage has occurred due to a defect in materials or workmanship; (b) cosmetic damage, including but not limited to scratches, dents, and broken plastic on ports; (c) damage caused by use with non-**j5create** products; (d) damage caused by natural disasters (flood, fire, earthquake, lightning strike, typhoon etc.); (e) damage caused by human misuse (lost, accident, abuse, misuse or other external causes); (f) damage caused by operating the product outside the permitted or intended uses described by **j5create**; (g) damage caused by service (including upgrades and expansions) performed by anyone who is not a representative of **j5create** or a **j5create** Authorized Service Provider; (h) a product or part that has been modified to alter functionality or capability without the written permission of **j5create**; or (i) if any **j5create** serial number on the product has been removed or defaced.

If such a situation occurs, **j5create** will calculate the cost of materials and repair for your reference.

This warranty is given by **j5create** in lieu of any other warranties express or implied.