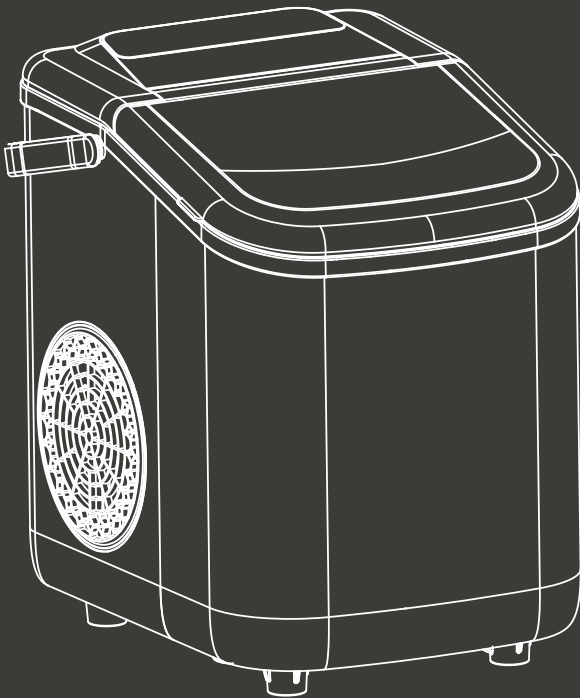


Ice Maker

Instruction Manual

MODEL: GSN-Z6Y3

AH-ZBJ41XX-1D2



 EST 9:00AM--17:00PM

 HJ-Customer-Service@outlook.com

 6269443420 | 6267435564

Contents


| | |
|-------------------------------------|---|
| IMPORTANT SAFETY INSTRUCTIONS | 1 |
| PARTS OVERVIEW | 3 |
| BEFORE FIRST USE | 5 |
| USING THE ICE MAKER | 6 |
| CLEANING AND MAINTENANCE | 6 |
| TROUBLESHOOTING | 7 |
| WARRANTY INFORMATION | 8 |

SPECIFICATIONS

| | |
|------------------------|-------------------------|
| Model | GSN-Z6Y3 |
| Climate Type | SN / N / ST |
| Safety Grade | I |
| Voltage | 115 V ~ 60 Hz |
| Rated Current | 2.0 A |
| Refrigerant | R600a / 26 g |
| Net Weight | 12.13 lb |
| Shell Material | Plastic |
| Dimensions (W × D × H) | 11.14 × 8.90 × 11.77 in |

Please read these instructions carefully before using your ice maker and keep them for future reference.

IMPORTANT SAFETY INSTRUCTIONS

1. Your safety and the safety of others are very important.
2. We have provided important safety instructions in this manual and on your appliance. Always read and follow all safety instructions.
3. This is the safety alert symbol . This symbol alerts you to potential hazards that can cause serious injury or death.
4. All safety messages will follow the safety alert symbol and one of the signal words: DANGER or WARNING:

 DANGER

 WARNING

5. All safety instructions will identify the hazard, explain how to reduce the risk of injury, and describe what can happen if the instructions are not followed.
6. **⚠ WARNING:** Do not touch the evaporator while the ice maker is operating or producing ice. Contact with the evaporator may cause frostbite or skin injury.

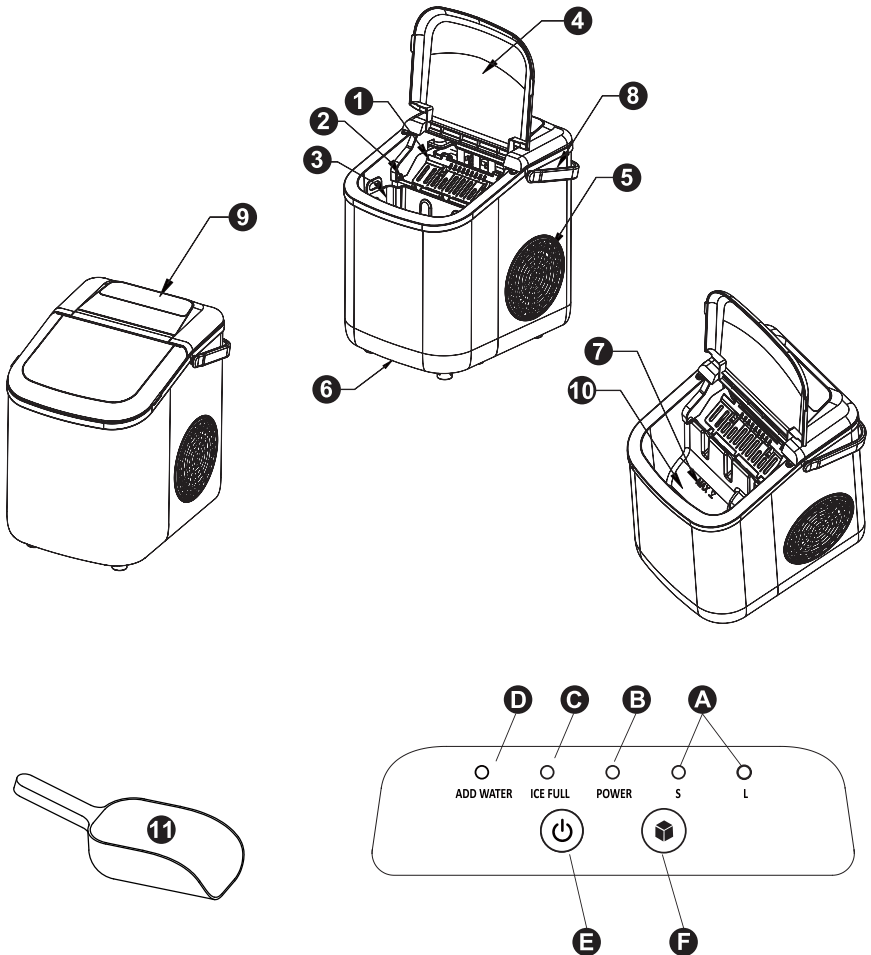


evaporator

7. To reduce the risk of fire, electric shock, or personal injury, basic safety precautions must be observed when using electrical appliances. Read all safety instructions carefully before using this appliance.
8. Do not operate the ice maker if the power cord is damaged.
9. Use a properly grounded power outlet and ensure the power plug is fully inserted into the socket.
10. Do not place the power cord on carpet, heat-insulating surfaces, or cover it in any way. Keep the cord away from walking paths and do not immerse it in water.
11. The use of an extension cord is not recommended, as it may cause overheating or fire. If an extension cord must be used, it should have a minimum wire size of AWG 15($\approx 1.5 \text{ mm}^2$).
12. Always disconnect the power supply before cleaning or performing any maintenance.
13. Children should be supervised when they are nearby.
14. Do not use flammable liquids to clean the ice maker. This may cause fire or explosion.
15. Do not tip or overturn the ice maker. If the unit is tipped, allow it to stand upright for **at least 2 hours** before turning it on.
16. When moving the ice maker indoors from a cold environment, allow several hours for the unit to reach room temperature before plugging it in.
17. **⚠ WARNING:** Keep ventilation openings around the appliance clear. Do not use the ice maker in a built-in or enclosed space.
18. **⚠ WARNING:** Only use the defrosting method recommended by the manufacturer. Do not attempt to speed up defrosting by mechanical or other means.
19. **⚠ WARNING:** Do not damage the refrigeration circuit.

20. **⚠ WARNING:** Only use drinking water to make ice. Do not use any other liquids.
21. **⚠ WARNING:** Use only manufacturer-recommended accessories and components.
Do not place or use any other electrical appliances inside the ice maker.
22. Do not store explosive substances, such as aerosol sprays, inside the appliance.
23. This appliance is intended for household use and small-scale commercial use, such as milk tea shops.

PARTS OVERVIEW




| | |
|------------------------------|--|
| 1. Ice Pusher | Pushes the ice cubes into the ice basket when ice making is complete. |
| 2. Infrared Ice Full Sensor | Detects ice in the basket; the Ice Full Indicator Light on the control panel will illuminate when the basket is full. |
| 3. Ice Basket | Used for storing and transporting ice. |
| 4. Top Cover | Transparent window allows you to see the interior. |
| 5. Air Outlet | Ensures proper airflow; keep at least 30 cm (12 in) away from surrounding objects. |
| 6. Drain Plug | Located at the bottom of the water tank; pull down to drain water. |
| 7. Maximum Water Level | “MAX” level mark |
| 8. Handle | / |
| 9. Control Panel | / |
| 10. Water Tank | / |
| 11. Ice Scoop | / |
| A. Ice Size Indicator Lights | Indicates the selected ice size (Small / Large). |
| B. Power Indicator Light | / |
| C. Ice Full Indicator Light | / |
| D. Add Water Indicator Light | Indicates that the water tank needs to be refilled. |
| E. Power Button | / |
| F. Ice Size Selection Button | / |


BEFORE FIRST USE

① Unpacking and Preparation

1. Remove all internal and external packaging materials. Make sure all accessories, including the ice basket and ice scoop, are included. If any items are missing, contact customer service.
2. After transportation, allow the unit to stand upright for **at least 2–3 hours** before use.
3. Remove the ice basket and wash it with warm water. Clean the water tank with warm water and a soft cloth.
4. Rinse the evaporator with clean water or alcohol. Do not use other chemical cleaners.
5. Place the ice maker on a level surface, away from direct sunlight and heat sources. Ensure at least 30 cm (12 in) of clearance on both sides and at the rear to allow proper ventilation.
6. Remove the foam base from the bottom of the unit before connecting the power supply.
7. Ensure a properly grounded power outlet is available nearby before plugging in the ice maker.
8. Keep the appliance away from ignition sources, sparks, and high-temperature objects.
9. Do not use the ice maker in flammable or explosive environments.
10. When moving the unit, do not tilt it more than 45°. Do not invert or lay the unit on its side. Do not pull on the power cord.

 **WARNING:** The insulation material of the ice maker contains flammable materials. When disposing of the appliance, follow local regulations and use appropriate disposal methods, such as recycling through an authorized recycling facility. Do not incinerate.

② Power Connection

 **DANGER:** Incorrect grounding may result in electric shock. Do not use the appliance if the power cord is damaged.

1. For your safety, the ice maker must be properly grounded.
2. This unit requires a standard 115 V~60 Hz grounded power supply.
3. If the power cord is damaged, it must be replaced by the manufacturer or qualified personnel.


Note: When used for the first time, the ice cubes from the first two cycles may be smaller. Normal ice size will be achieved afterward.

USING THE ICE MAKER

- ① Open the top cover and remove the ice basket. Add water to the water tank, making sure the water level does not exceed the MAX level mark. Reinstall the ice basket and close the top cover. It is recommended that the water level remain below the bottom of the ice basket.
- ② Press the **Power** button on the control panel to start the ice-making process.
- ③ Press the **Ice Size Selection** button to choose the desired ice size. If the ambient temperature is below 15 °C (59 °F), it is recommended to select Small ice to prevent ice cubes from sticking together.
- ④ Each ice-making cycle takes 6–14 minutes, depending on the selected ice size and the ambient temperature. Ice size is also affected by the water temperature.
- ⑤ After the ice maker starts operating, check the water level in the water tank regularly. If the water pump cannot draw water, the ice maker will stop automatically and the **Add Water Indicator Light** will illuminate. Add water to the water tank, then press the **Power** button to restart ice making.
- ⑥ When the ice basket is full, ice making will stop automatically and the **Ice Full Indicator Light** will illuminate. When the ice level drops below the infrared sensing position, the ice maker will restart automatically. Excessive ambient light may affect the ice full detection function.
- ⑦ It is recommended to change the water every 24 hours to maintain cleanliness. If the ice maker will not be used for an extended period, drain any remaining water from the water tank.
- ⑧ In standby mode, press and hold the **Power** button for 3 seconds until the **Ice Size Indicator Lights** flash alternately. The **Automatic Cleaning** function will start and run for 30 minutes. To stop the cleaning cycle, press the **Power** button for 1 second.

Suggestion: Use potable drinking water for ice making.

CLEANING AND MAINTENANCE

 **Caution:** Before using the ice maker for the first time, it is strongly recommended that you thoroughly clean the entire unit.

1. Remove the ice basket.
2. Open the drain plug and drain the water from the water tank.
3. Wipe the interior liner with a diluted mild cleaning agent, warm water, and a soft cloth.

4. Wipe the exterior surfaces regularly with a diluted mild cleaning agent and warm water.
5. Use a clean, soft cloth to dry the interior liner.
6. Close the drain plug.

⚠ WARNING: If the ice maker will not be used for an extended period, drain all water from the unit and wipe it dry.

TROUBLESHOOTING

| Problem | Possible Cause | Solution |
|---|---|---|
| The Add Water indicator lights up. | Water level is low. | Stop ice making, add water to the water tank, then press the Power button to restart ice making. |
| | The filter at the bottom of the water tank is blocked. | Clean the filter at the bottom of the water tank. |
| The Ice Full Indicator Light is on. | The ice basket is full. | Remove ice from the ice basket. |
| | The Ice Full Sensor is faulty, causing the indicator not to function properly. | Contact a qualified technician to inspect or replace the sensor. |
| The Ice Full Indicator Light flashes. | The water tank or ice pusher is stuck. | Remove any ice blocking the water tank or ice pusher. |
| | | If the problem persists, contact a qualified technician. |
| The ice cubes are sticking together. | The ice-making cycle is too long. | Stop ice making, allow the ice to melt, then restart ice making and select Small ice. |
| | The evaporator is immersed too deeply in the ice tray. | Contact a qualified technician for assistance. |
| | The water temperature in the water tank is too low. | Replace the water in the water tank; the optimal water temperature is between 8 °C and 32 °C (46 °F - 90 °F). |
| Ice-making cycle runs normally, but no ice is produced. | Ambient temperature or water temperature is too high. | Ensure the ambient temperature is below 32 °C (90 °F). If necessary, add cold water to the water tank. |
| | Leak or blockage in the refrigeration system. | Contact a qualified technician or consult our after-sales service for assistance. |

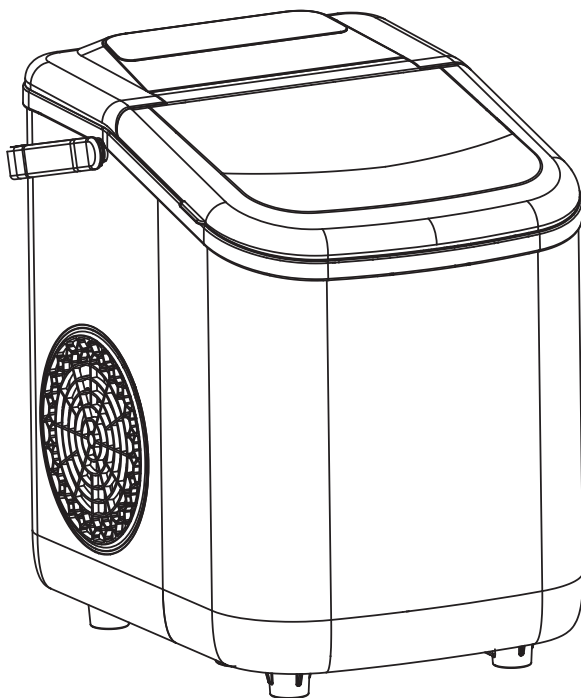
Electrical Grounding Faults

If any abnormality occurs in the grounding system outside the appliance, stop using the ice maker immediately. Unplug the power cord or disconnect all power supply connections, and contact a qualified technician for assistance.

Note: If the fault originates from the ice maker itself, have it inspected by a qualified technician, or if needed, contact our after-sales service for further assistance. Do not attempt to disassemble the appliance on your own.

WARRANTY INFORMATION

1. This product is covered by a **one (1) -year** limited warranty against defects in materials and workmanship, valid only for the original purchaser. The warranty period begins on the date of retail purchase and is non-transferable.
2. This warranty does not cover normal wear and tear, or any damage resulting from misuse, negligent use, use with improper voltage or current, failure to follow the operating instructions, or any disassembly, repair, or modification not authorized by our after-sales service.
3. Additionally, this warranty does not cover damages caused by Acts of God (such as fire, flood, hurricanes, or tornadoes) or force majeure events (such as arson, power outages, riots, or vandalism).
4. This warranty gives you specific legal rights, and you may also have other rights which vary from state to state (or province to province). Some states (or provinces) do not allow limitations on how long an implied warranty lasts, or the exclusion or limitation of incidental or consequential damages, so the above limitations or exclusions may not apply to you.



Technical Support

6269443420 | 6267435564

Other Info

HJ-Customer-Service@outlook.com

Thank you for choosing this product. We strive to provide you with the best quality products and service in the industry. Should you have any issues, please don't hesitate to contact us.