

Congratulations on your purchase of a high-quality Insignia product. Your NS-PRCL01 represents the state of the art in projection clock radio design and is designed for reliable and trouble-free performance.

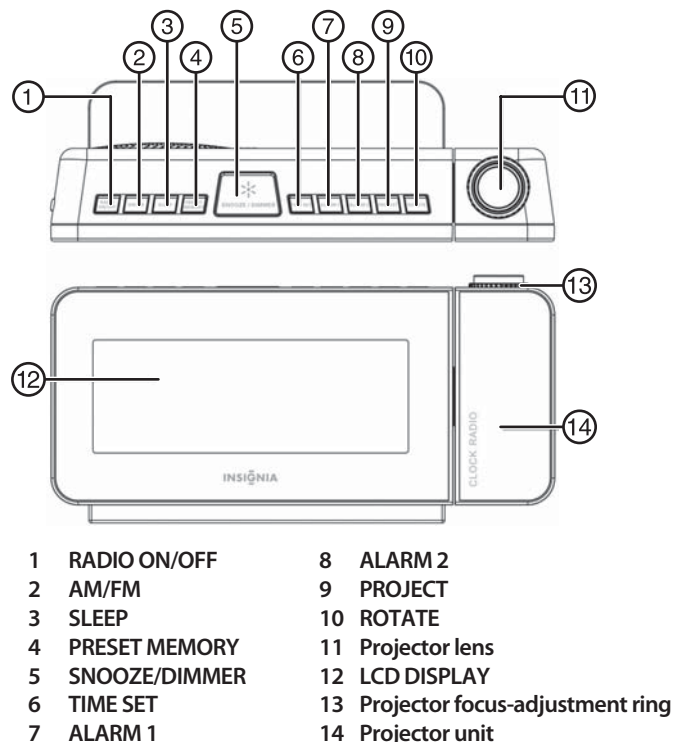
Package contents

- Projection clock radio
- AC-DC adapter
- CR2032 x 1 battery
- User Guide
- Quick Setup Guide

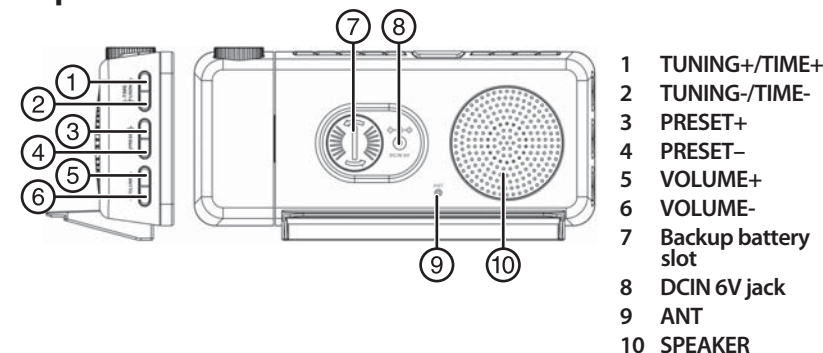
Step 1 Get to know your Projection Clock Radio

Check out the front, side, and back panels to familiarize yourself with button controls and connection options. See your *User Manual* for more information on buttons and LED.

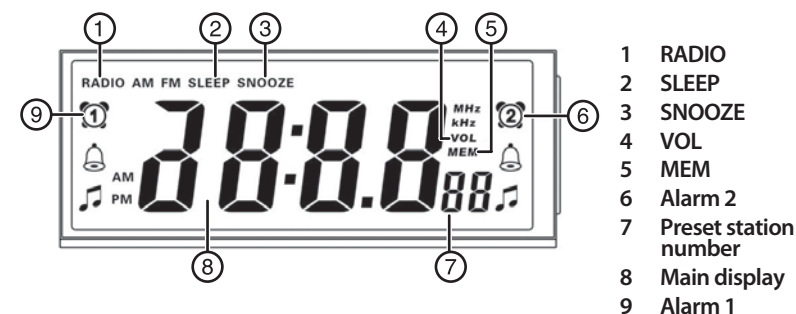
Front



Top



LED



Step 2 Install the backup battery

Install the backup battery to maintain the correct time in case the AC power fails.

- 1 Make sure that the AC adapter is unplugged from the power outlet.
- 2 Turn your clock radio so the back is facing forward, then unscrew the circular backup battery cover.
- 3 Insert one CR2032 button cell battery (included) into the battery compartment. Make sure that the + symbol on the battery is facing out.
- 4 Reinstall the backup battery slot cover.
- 5 Plug the AC adapter into your clock radio and a power outlet.



Step 3 Plug in your Projection Clock Radio using the AC adapter

- 1 Place your clock radio in a convenient place near a power outlet within range of the AC adapter.
- 2 Plug the AC adapter into the power outlet.
- 3 Plug the AC adapter into the **DCIN 6V** jack on the radio.

Step 4 Using your radio

Setting the time

- 1 Press and hold **TIME SET** until the hour blinks on the display.
- 2 Press **TIME+** or **TIME-** to set the hour.
- 3 Press **TIME SET**. The minutes blink on the display.
- 4 Press **TIME+** or **TIME-** to set the minutes.
- 5 Press **TIME SET** to store the setting.

Setting the alarm

- 1 Press and hold **ALARM 1** (or **ALARM 2** depending on the alarm you are setting) until the hour blinks on the display.
- 2 Press **TIME+** or **TIME-** to set the hour.
- 3 Press **ALARM 1** (or **ALARM 2** depending on the alarm you are setting). The minutes blink on the display.
- 4 Press **TIME+** or **TIME-** to set the minutes.
- 5 Press **ALARM 1** (or **ALARM 2**) to store the setting.
- 6 Press **ALARM 1** (or **ALARM 2**) repeatedly to set the alarm mode. Settings include:
 - **Wake to buzzer**—🔔 appears below the alarm icon.
 - **Wake to radio**—🎵 appears below the alarm icon.
 - **Alarm off**—Alarm icon disappears.

Turning off the alarm

- Press any button other than **SNOOZE/DIMMER** to turn off the alarm while the alarm is sounding. The alarm will be set for the same time the following day. If you do not want to set the alarm for the next day, press **ALARM 1** or **ALARM 2** repeatedly until the alarm icon disappears from the display.

Using snooze

- While the alarm is sounding, press **SNOOZE/DIMMER**. The alarm turns back on automatically nine minutes later.
- To cancel snooze (the alarm will not turn back on), press any button other than **SNOOZE/DIMMER**. The alarm will be set for the same time the following day.

Playing the radio

- 1 Press **RADIO ON/OFF** to turn on your clock radio.
 - To select the radio band you want to listen to, press **AM/FM**.
 - To tune the radio up or down and select the station you want, press **TUNING+** or **TUNING-**.
 - To auto search for stations, press and hold **TUNING+** or **TUNING-** for more than two seconds.
 - To adjust the volume, press **VOLUME+** or **VOLUME-**.
 - To tune to the next preset station, press **PRESET+** or to tune to the previous preset station, press **PRESET-**.
- 2 Press **RADIO ON/OFF** to turn off your clock radio.

Setting and using station presets

- 1 Press **RADIO ON/OFF** to turn on your clock radio.
- 2 Press **AM/FM** to select the radio band you want to listen to.
- 3 Press **TUNING+** or **TUNING-** to tune the radio up or down and select the station you want.
- 4 To save the station as a preset, press **PRESET MEMORY**. “MEM” and “01” blink on the display.
- 5 Press **PRESET+** or **PRESET-** to select the preset number you want to assign to that station.
- 6 Press **PRESET MEMORY** again to confirm the setting. The station is stored in memory.
- 7 Repeat Steps 3 through Step 6 to store as many as ten AM presets and ten FM presets.
- 8 To select a preset station, briefly press **PRESET+** or **PRESET-** repeatedly until you reach the station you want. “MEM” appears on the display, along with the preset number selected and the station frequency.

Projecting the time

- 1 Switch off the room lights to darken the room.
- 2 Press **PROJECT** to turn the projector on.
- 3 Turn the projector unit slowly to aim the projected image on the wall or ceiling.
- 4 If the image appears to be upside down on your wall, or upside down on the ceiling when you are lying in bed, press **ROTATE** to rotate the projected image.
- 5 If the image appears fuzzy and out of focus, slowly rotate the focus adjustment ring clockwise or counter-clockwise until you obtain the sharpest image.
- 6 To turn the projector off, press **PROJECT**.

Troubleshooting

Problem	Solution
The display is off	Make sure that the AC-DC adapter is connected to radio and the AC-DC adapter is plugged into a power outlet.
No sound	Increase the volume and make sure that the radio is on and tuned to a radio station.
The sound has interference	Make sure that the radio is not too close to a TV or other appliance.
The LCD display is too dim	Adjust the backlight.
Radio reception is weak	The AM bar antenna is inside the cabinet. If AM reception is weak, change the position of cabinet until the internal antenna picks up the strongest signal. The FM antenna is at the back of the cabinet. If FM reception is weak try varying the position and direction of the FM antenna until you find the strongest signal.

Specifications

Power supply	DC IN 6V/0.5A
FM band	87.5 - 107.9 MHz in 200 KHz steps (USA)
AM band	530 - 1710 KHz in 10 KHz steps (USA)
Output power	1 W
Speaker	2.25" x 1
Operating temp. (Max)	14° ~ 104°F (-10° ~ 40°C)

90-day limited warranty

Visit www.insigniaproducts.com for details.

FCC Part 15

This device complies with Part 15 of the FCC Rules. Operation of this product is subject to the following two conditions: (1) this device may not cause harmful interference, and (2) this device must accept any interference received, including interference that may cause undesired operation.

