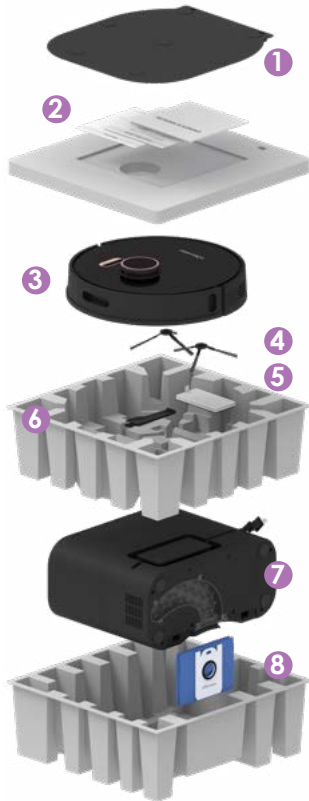


QUICK START GUIDE

Box Contents



- 1 Charging Bed
- 2 Owner's Manual
- 3 Orb-i
- 4 Side Brushes (2)
- 5 Filter
- 6 Cleaning Tool
- 7 Self-emptying Charging Station
- 8 Dust Bag

Getting Started



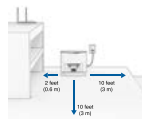
Scan for a step-by-step Video Guide.

1 Prepare the Self-emptying Charging Station

Mount the charging station over the charging bed's sockets.



Place the charging station on a hard, flat surface, away from edges & stairs, with plenty of room around it. Plug it into the outlet.



2 Prepare Orb-i for his first clean

Remove the protective pieces from Orb-i and his bumper.



Place the side brush over the empty socket on Orb-i. Press down to lock.



Press and hold the GO button until the screen lights up.



Press the CHARGE button on Orb-i to send him to his charging station.



Or, to charge Orb-i manually, carefully align the metal nodes on Orb-i's back against the charging plates on the station.



bObsweep App



Scan for a step-by-step Video Guide.

1 Prepare for Wi-Fi Connection

Make sure your phone is connected to a 2.4 GHz Wi-Fi network.

- ✓ 2.4GHz Wi-Fi
- ✓ Bluetooth
- ✓ Location Services
- ✓ Local Network
- ✗ Wi-Fi Calling

Turn on: **Bluetooth**
Location Services
Local Network

Turn off: **Wi-Fi Calling**

Bring Orb-i and your mobile phone into the same room as the router/modem.



2 Connect Orb-i to Wi-Fi

Download the bObsweep app on the Google Play store or the App Store.



Create account and Log in to the bObsweep App.



If you are going to use Alexa voice commands with Orb-i, enable the bObsweep skill on the Alexa App.



Open the bObsweep App, Add Model, and select **Orb-i** from the list of models.



Follow the step by step instructions on the bObsweep App to connect Orb-i to Wi-Fi.

If prompted, give the bObsweep App access to your location, "Allow While Using App", and, "Allow bObsweep to find nearby devices".

Quick Tips



Scan for a step-by-step Video Guide.

* Self-emptying

By default, every time Orb-i docks, a short but loud vacuuming process empties his bin into his station's disposable bag.



You can change the frequency via the App. However, if the bin gets too packed, its contents cannot be vacuumed out. If you haven't recently vacuumed, allow Orb-i to self-empty frequently, so the bin isn't too full for air's passage.



Scan for a step-by-step Video Guide.

* Mapping

Orb-i constantly updates his map while he cleans ("Active Map").

You can save the map. Orb-i can hold up to 3 Saved Maps, for 3 different floors / environments.

Hit "make active" on any Saved Map for Orb-i to initiate with.

Before moving Orb-i to a new floor:

1. Save the map of the current floor.
2. Delete the "Active Map" so Orb-i creates a fresh map for the new floor.
3. Save the map of the new floor.

If Orb-i does not cover the entire floor in one charge, initiate a Swift Map, or go to Settings and toggle on Auto-Resume. Orb-i resumes where he left off, after recharging.

Scan for more how-to videos and instruction guides:



bobsweep.com/orbi-support