



Smart Wall Switch Installation Guide

On/Off Switch

Models

CSWONBLBWFINN

CSWONBLPWFINN

CSWONBLTWFINN

 WARNING: RISK OF ELECTRIC SHOCK

This product installation requires handling 120 volt wiring.

Follow each step carefully.

If any concerns handling wiring, hire a qualified electrician.

Ensure all work meets applicable local and national codes.

Simple DIY Setup



Install
your Smart
Switch



Download
the C by GE app



Add
your Smart Switch to
the C by GE app



GET IT ON
Google Play




Download on the
App Store

Compatibility Requirements

Rating 120V AC 60Hz

Neutral wire is required
(Wire is usually white
or grey)

Ground wire is required
(Wire is usually green,
green with a yellow stripe,
or copper) 

Wi-Fi 802.11 b/g/n @ 2.4 GHZ
is required

Works with halogen,
incandescent and LED bulbs,
including C by GE Smart
Bulbs.

LED up to 1.25 amps

Incandescent/halogen
up to 5 amps

Motor up to 1/4HP

! IMPORTANT NOTE ON 3-WAY WIRING:

Some lights have one wall switch, while others are controlled by two or more wall switches (such as stair lights, which have a switch at both the top and bottom of the stairs). If your lights have more than one switch (called a 3-way), we've created instructions for how to install and enable the capability.

Visit cbyge.com/switch-support
for 3-way installation instructions and how-to-videos.

Let's Do It

INCLUDED



On/Off Switch



Wall Plate



4 Wire Nuts



Bulb Adaptor



2 Phillips Mounting Screws
2 Phillips Face Plate Screws

Line/Load

Line/Load

Ground 

Wire Labels

YOU'LL NEED



Phillips Screwdriver



Needle Nose Pliers
(recommended)



Voltage Tester
(recommended)



Approximately
30 minutes of your day
to install and setup
the switch

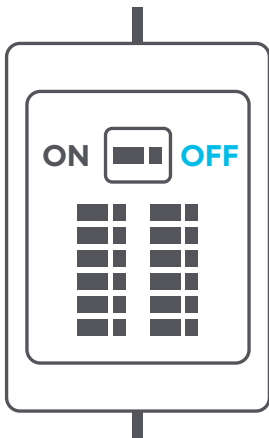
You Got This!

And we're here to help.
For in-depth instructional videos
and a guided tour through the installation,
go to cbyge.com/switch-support.

BEFORE YOU DO ANYTHING: Step 1

Turn Off The Power!

1. Turn off the power for the switch location at the circuit breaker box.
2. Test existing switch by toggling switch on/off, ensuring lights do not turn on.
3. Now, follow these setup steps for a single gang switch.



IF APPLICABLE

Install adaptor onto C by GE smart or non-dimmable LED bulbs

1. C by GE smart switches and dimmers are compatible with C by GE smart bulbs. To keep your C by GE bulbs always available and connected, the included bulb adaptor should be used to have full control of C by GE bulbs on the same circuit as the switch.

NOTE: Only one bulb adaptor is needed per switch, even if there are multiple C by GE bulbs on the circuit.

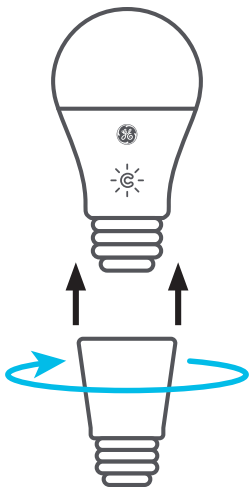
2. Simply twist the bulb adaptor onto the base of one C by GE smart bulb and Screw into the fixture.

NOTE: Keep your bulb adaptor handy. Even if you don't have C by GE bulbs, the bulb adaptor can be used to improve the performance of some traditional LED bulbs if you begin experiencing any performance issues. If installing in a recessed can application, you may need to adjust the depth of the recessed can to ensure the bulb is flush.

Go to: cbyge.com/switch-support for more helpful tips on when to use the bulb adaptor.

IF APPLICABLE

**Install adaptor onto
C by GE smart or
non-dimmable LED bulbs**



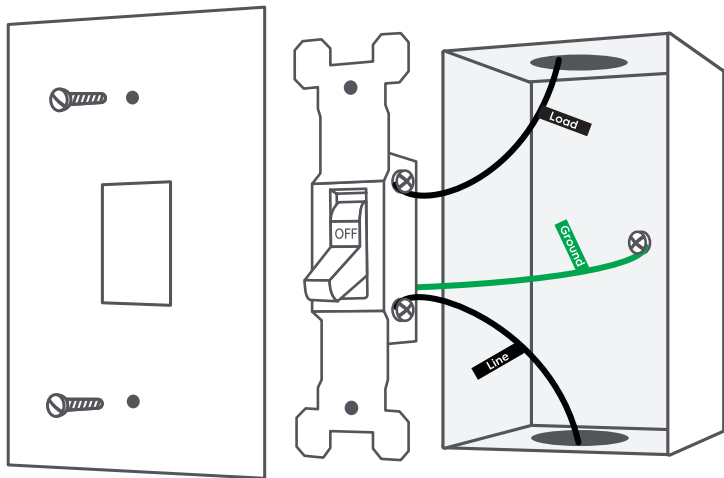
STEP 2

Remove Your Old Switch

1. Remove the existing wall plate and switch from the wall.
2. Use voltage tester on the black wires to confirm power to the switch is off (recommended).
3. Before disconnecting the wires from the wall, label each with the provided wire labels.

⚠ Ground wire is required.
If you don't have this wire, the C by GE switch is not compatible.

4. Disconnect wires and remove existing switch.



Line/Load Line/Load Ground 


  

Wire Labels

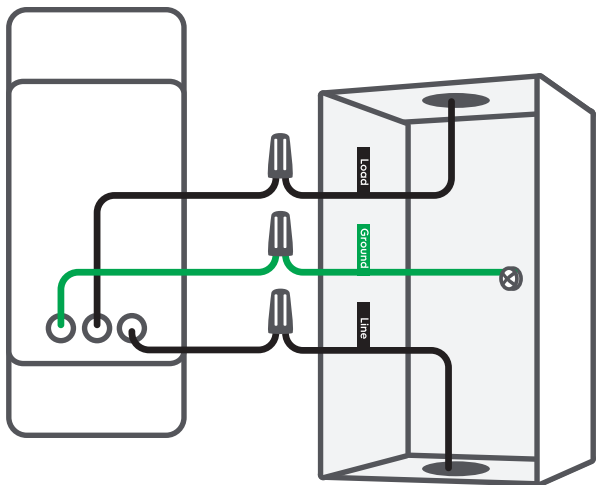
STEP 3

Connect The Wires

NOTE: Both black wires on the switch are interchangeable and can be connected to either the load or line wire from the wall.

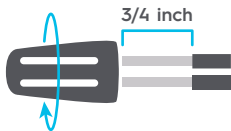
1. Connect the first line/load (black) wire on the switch to the line or load (black label) wire from the wall.
2. Connect the second line/load (black) wire on the switch to the line or load (black label) wire from the wall.
3. Connect the ground  (green) wire on the switch with the ground (green label) wire from the wall.
4. Cap the 3-way/multi-way traveler wire (if applicable).
For 3-way switch setup, visit cbyge.com/switch-support
5. Cap the neutral wire from the wall (if applicable).
Neutral wire is not required to operate this switch.

⚠ Attention: Incorrectly connecting the Ground wire from the wall to the Line or Load wire on the switch will damage the product.



USING WIRE NUTS

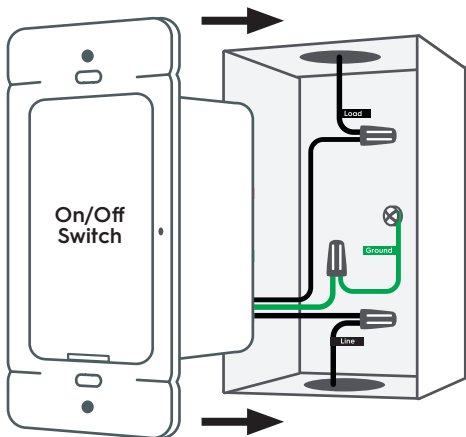
1. Insert wires into wire nut.
2. Turn wire nut clockwise.
3. Pull gently on wires to test connection.



STEP 4

Fit Wires Into Wall Box

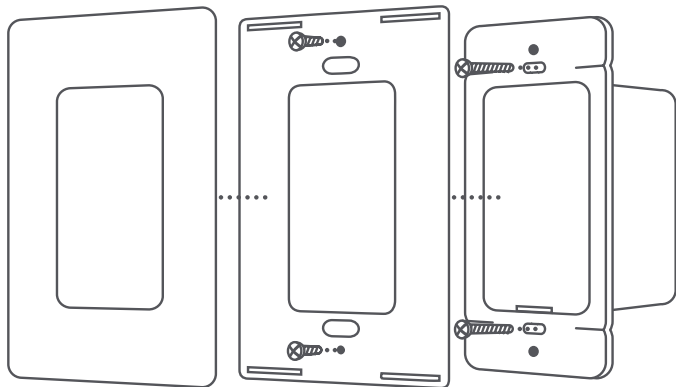
Neatly push the wires back into the box, rotating the switch so it's oriented according to the image.



STEP 5

Secure The Switch

1. Using a Phillips screwdriver and the screws provided, secure the switch to the wall until level and flush.
2. Screw on the faceplate bracket, then snap the faceplate cover onto the bracket.

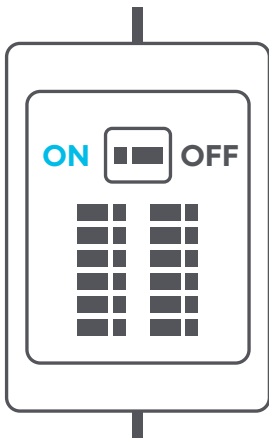


STEP 6

Turn The Power Back On

After the switch is secured and faceplate mounted, turn the power back on at the circuit breaker box.

At the switch, LED indicator light or light ring will flash blue indicating the device is wired correctly and the device is in setup mode. Press any button on the switch to enable setup mode if setup mode times out.



STEP 6

Turn The Power Back On

LED indicator light or light ring will flash blue until the switch is added to the C by GE app.

LED indicator light or light ring will flash red if the circuit is overloaded. Max load rating 1.25 amps for LED and 5 amps for incandescent/halogen.

LED indicator light or light ring will not illuminate if wired incorrectly.

IF LIGHTS DON'T TURN ON:

1. Check that power to the switch is on at the breaker.
2. Turn power off at the breaker, return to the switch to confirm the wires are securely and properly wired according to the installation guide.
3. Go to cbyge.com/switch-support for more troubleshooting.

Congratulations!

You've completed the Smart Switch installation.

Next...



Download
the C by GE app



Add
your Smart Switch to
the C by GE app



Setup
your Alexa or
Google voice
assistant (optional)

Enable Your Voice Assistant

Amazon Alexa

To setup, open the Alexa app, search for the C by GE skill, follow the setup instructions.

Try this...

Alexa, turn off the living room.

Alexa, turn on the bedroom.

Google Assistant

To setup, open the Google Assistant or Google Home app, search for the C by GE action, follow the setup instructions.

Try this...

Hey Google, turn on the lights.

Hey Google, good morning.

Hey Google, I'm leaving.

Additional Information and Warnings

FCC Compliance Statement Compliance Notice:

This equipment has been tested and found to comply with the limits for a Class B digital device, pursuant to part 15 of the FCC Rules. These limits are designed to provide reasonable protection against harmful interference in a residential installation. This equipment generates, uses and can radiate radio frequency energy and, if not installed and used in accordance with the instructions, may cause harmful interference to radio communications. However, there is no guarantee that interference will not occur in a particular installation. If this equipment does cause harmful interference to radio or television reception, which can be determined by turning the equipment off and on, the user is encouraged to try to correct the interference by one or more of the following measures:

- **Reorient or relocate the receiving antenna.**
- **Increase the separation between the equipment and receiver.**
- **Connect the equipment into an outlet on a circuit different from that to which the receiver is connected.**
- **Consult the dealer or an experienced radio/TV technician for help.**

This device complies with part 15 of FCC rules. Operation is subject to the following two conditions:

- 1. This device may not cause harmful interference.**
- 2. This device must accept any interference received, including interference that may cause undesired operation.**

Changes or modifications that are not expressly approved by the manufacturer could void the user's authority to operate the equipment.

RF Exposure Information:

This equipment complies with FCC radiation exposure limits set forth for an uncontrolled environment. In order to avoid the possibility of exceeding the FCC radio frequency exposure limits, human proximity to the antenna shall not be less than 8 inches during normal operation.

RF Exposure Statement:

This equipment complies with IC RSS-102 radiation exposure limits set forth for an uncontrolled environment. This transmitter must be installed to provide a separation distance of at least 8 inches from all persons and must not be collocated or operating in conjunction with any other antenna or transmitter.



CAUTION

For supply connections, use copper wire only rated at 75C.

High Voltage - Disconnect power supply before servicing

Operation temperature: 0-40°C

For Control of Electronic Ballast, CFLs, LED, and LED Lamps.

Type 1 Enclosure

IP20

Pollution Degree 2

Impulse Voltage: 2500V

Type 1 action

Indoor use only.





I © by GE