



G915 LIGHTSPEED

Wireless RGB Mechanical Gaming Keyboard

INDEX

GETTING STARTED

- [User guide](#)
 - [LIGHTSPEED connection](#)
 - [BLUETOOTH® connection](#)
 - [Charging](#)
 - [Keyboard features](#)
 - [Lightning functions](#)
 - [G-Keys](#)
 - [Game mode button](#)
 - [Keyboard backlighting](#)
 - [Onboard memory](#)
 - [Media controls](#)
 - [Battery indicator](#)
 - [Wireless controls](#)
 - [BLUETOOTH®](#)
 - [Keycap removal + replacement](#)
 - [Care and cleaning](#)

SPECIFICATIONS

- [Physical specifications](#)

- [Technical specifications](#)

FAQs

- [Bluetooth – Pairing and Troubleshooting](#)
 - [Connect your device](#)
 - [Windows](#)
 - [MacOS](#)
 - [Chrome OS](#)
 - [Android](#)
 - [iOS/iPad](#)
 - [Bluetooth troubleshooting tips](#)
 - [Logitech Bluetooth device doesn't connect with computer, tablet or phone](#)
 - [My Logitech Bluetooth device frequently gets disconnected or laggy](#)
- [My LIGHTSPEED receiver is stuck updating its firmware](#)
- [Device lost connection to LIGHTSPEED receiver after G HUB update](#)
- [Using the Device Pairing Tool in G HUB](#)
- [Logitech G HUB – FAQs](#)
 - [About Logitech G Hub](#)

WARRANTY

- [Hardware warranty](#)

CONTACT US

- [Logitech Support](#)

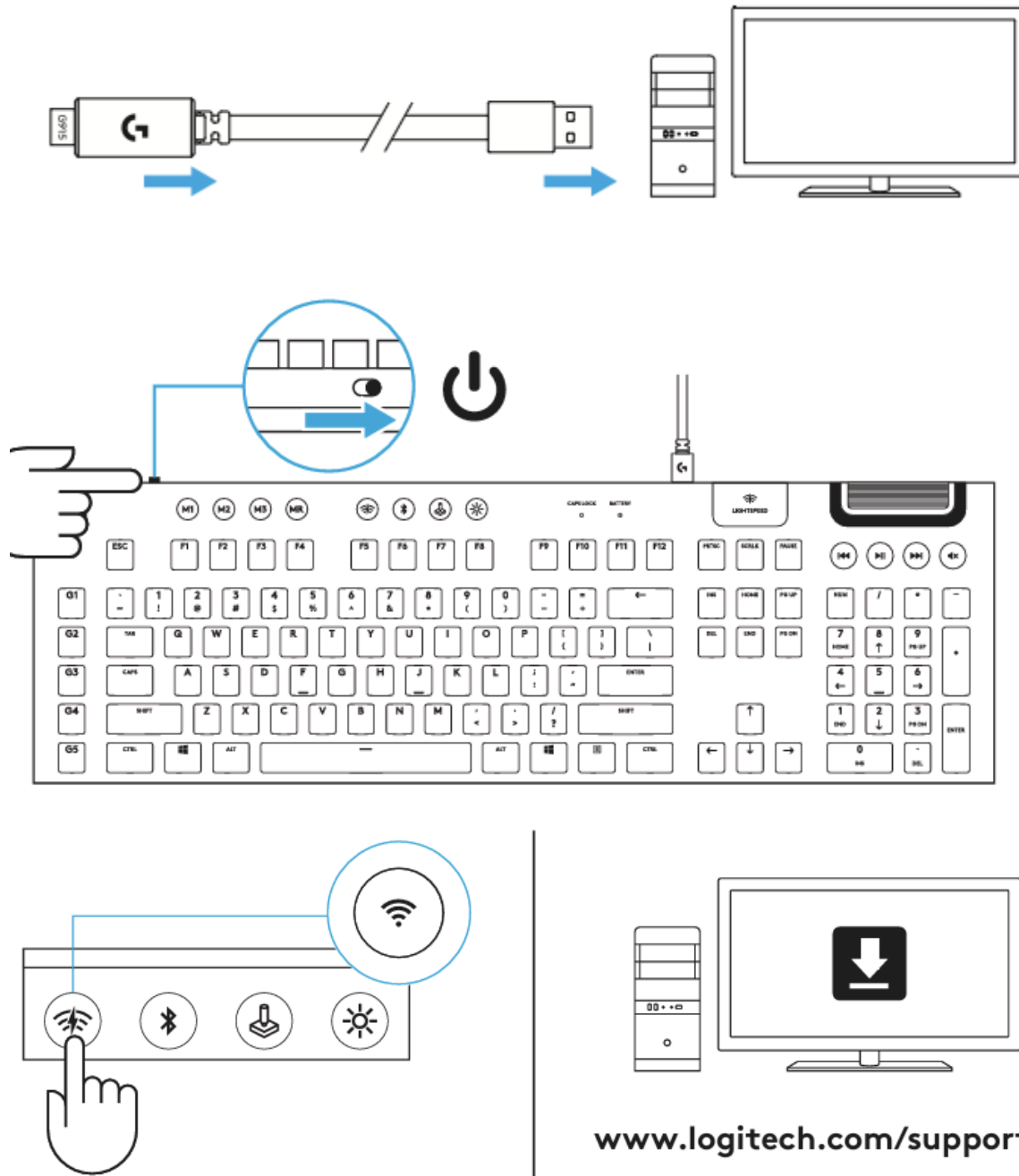
DOWNLOAD

- [G Hub](#)

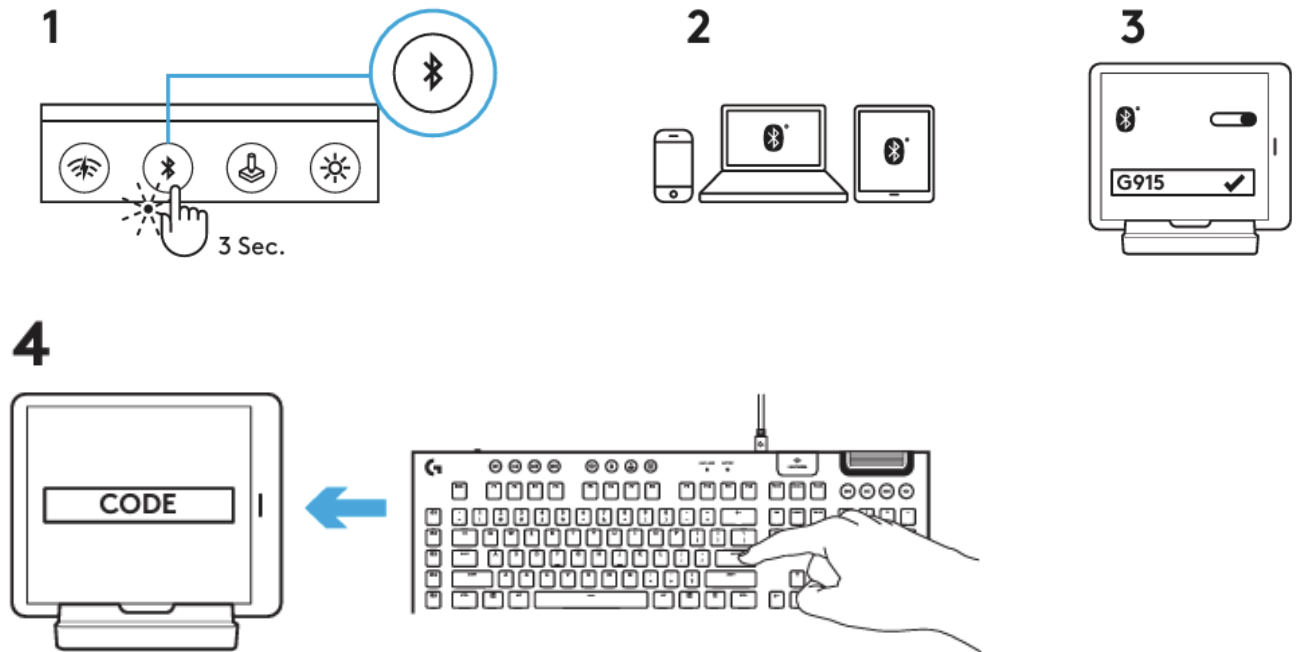
GETTING STARTED

USER GUIDE

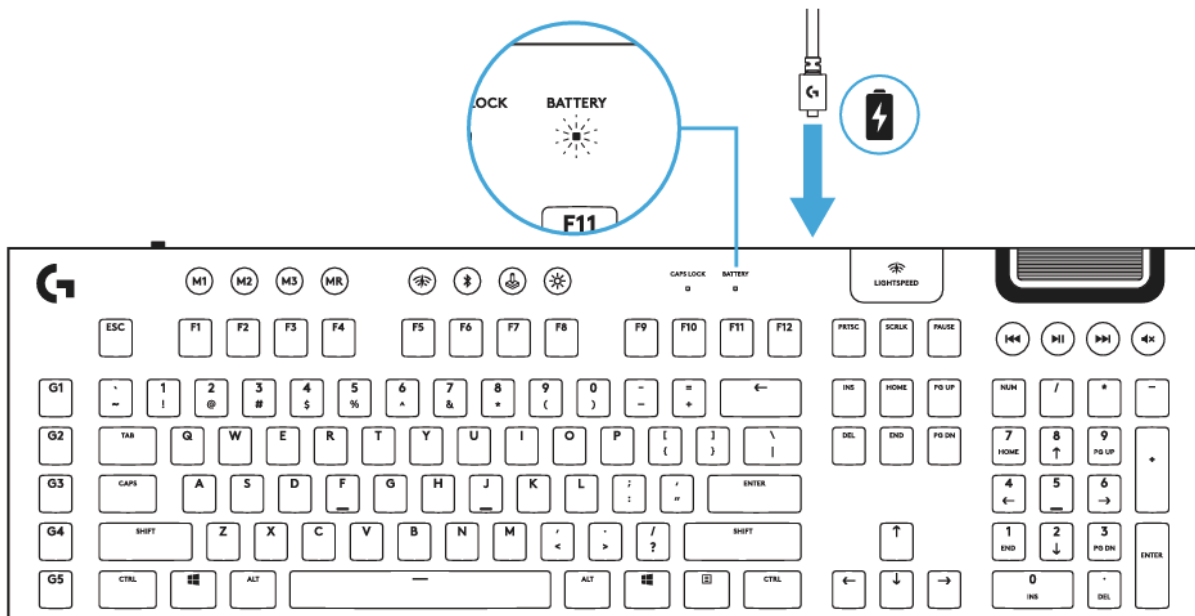
LIGHTSPEED connection



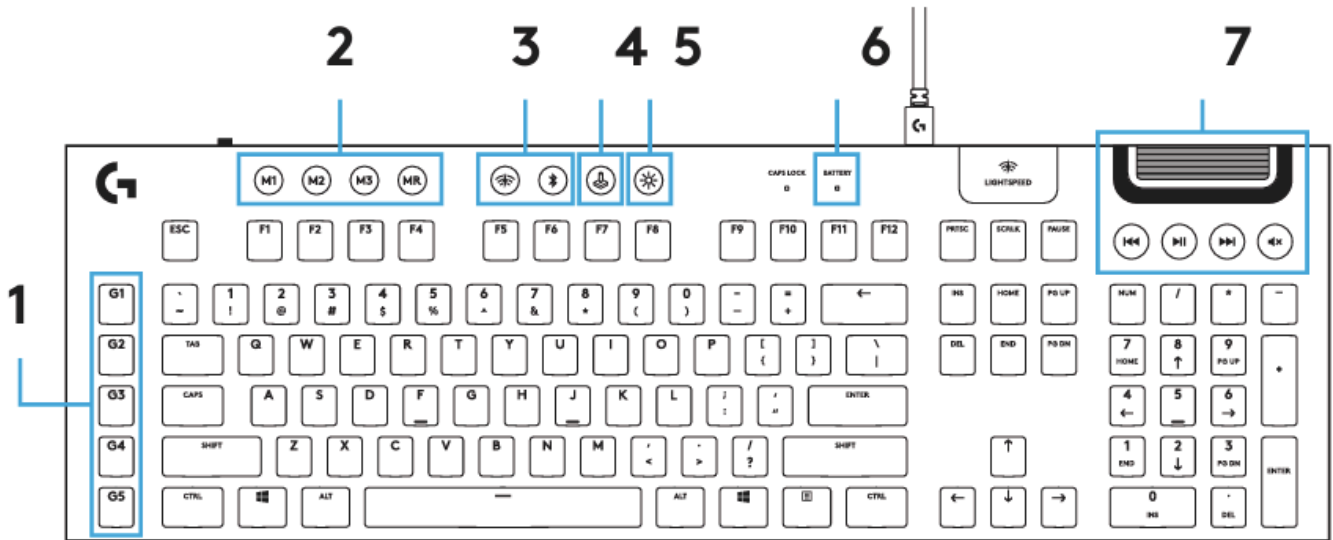
BLUETOOTH® connection



Charging

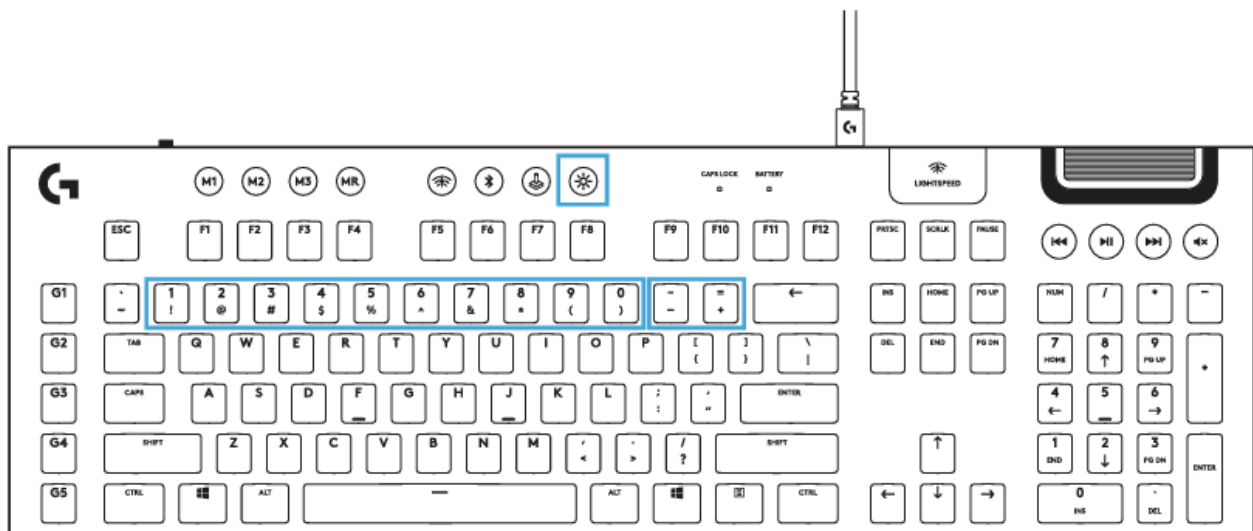


Keyboard features



- | | |
|-----------------------------|-------------------|
| 1. G-Keys | 5. Brightness |
| 2. Mode Switches | 6. Battery Light |
| 3. LIGHTSPEED and Bluetooth | 7. Media Controls |
| 4. Game Mode | |

Lightning functions



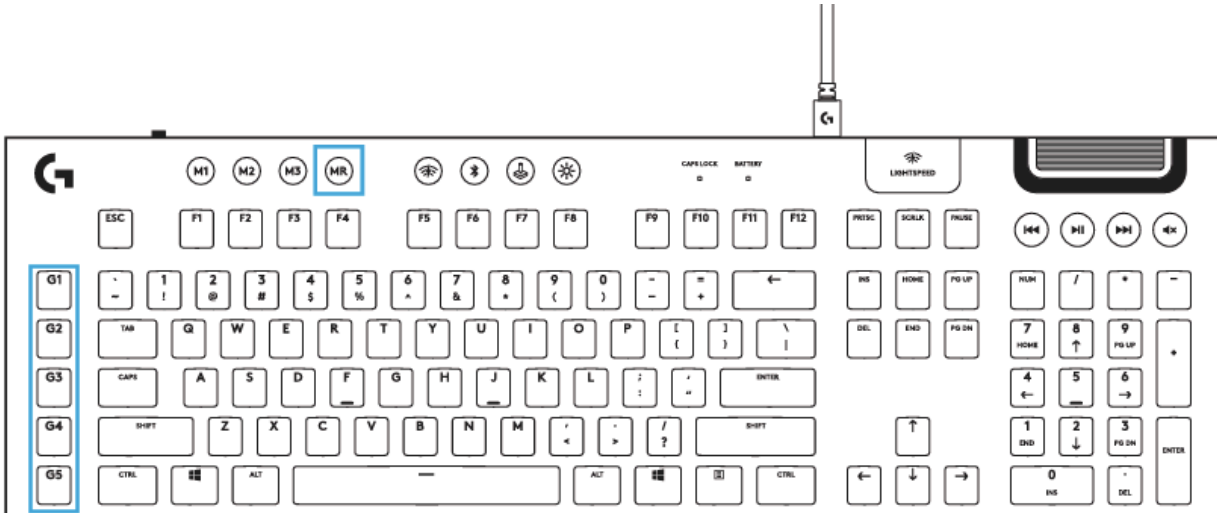
In addition to the lighting features available through G HUB software, G915 has onboard

lighting effects. To select these effects, press and hold the Brightness button while pressing the keyboard number keys to select an effect:

- **Brightness + key 1:** Colorwave (left to right)
- **Brightness + key 2:** Colorwave (right to left)
- **Brightness + key 3:** Colorwave (center out)
- **Brightness + key 4:** Colorwave (bottom up)
- **Brightness + key 5:** Color cycle
- **Brightness + key 6:** Ripple
- **Brightness + key 7:** Breathing
- **Brightness + key 8:** User-stored lighting
- **Brightness + key 9:** User-stored lighting
- **Brightness + key 0:** Cyan blue
- **Brightness + key -:** Decreases effect speed
- **Brightness + key +:** Increased effect speed

User-stored effects are saved to the keyboard by G HUB software.

G-Keys



- 5 programmable G-keys and three M-keys provide up to 15 unique functions per game
- Customize the G-keys using Logitech G HUB Software
- To record a macro:
 1. Press the MR key
 2. Press a G-key

3. Type the keys to be recorded
4. Press the MR key
 - To record a second macro to the same G-key, press M2 and repeat steps 1–4
 - For a third macro, press M3 and repeat steps 1–4

Download and install Logitech G HUB software from logitechg.com/GHUB

Game Mode button



This button disables the standard Windows key and Menu key to prevent the Windows Start menu from activating during a game, which might disrupt play. The game mode LED is lit during game mode.

Keyboard backlighting

Adjust keyboard brightness by cycling the keyboard brightness button.

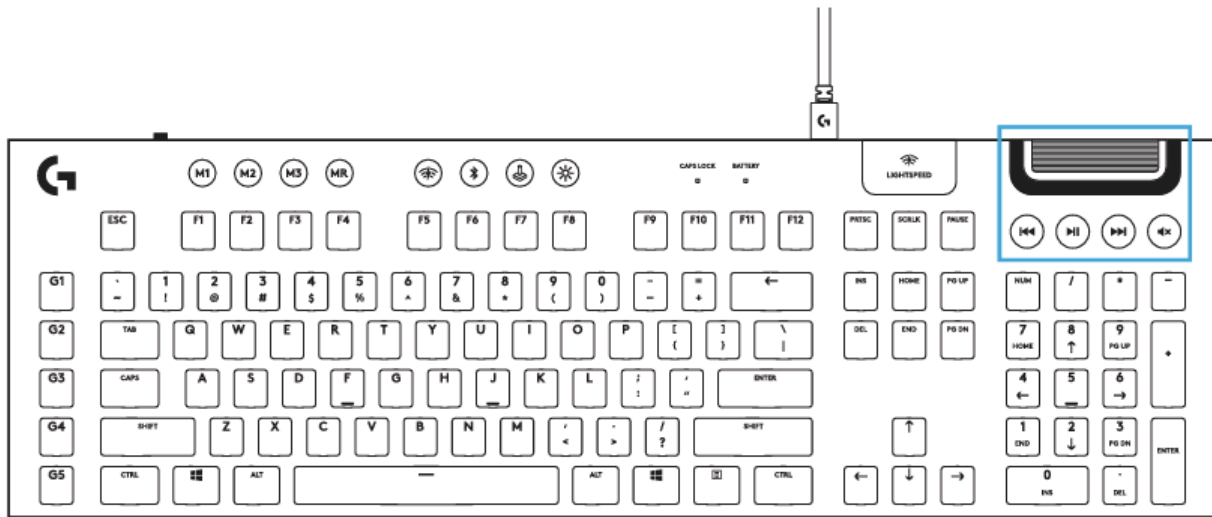


Onboard memory



Three onboard profiles can be saved to G915. The profiles are downloaded into the G915 through G HUB software, and are accessed by selecting M1, M2, or M3 when the keyboard is in Onboard mode (selected from G HUB software, or when G HUB software is off or not installed).

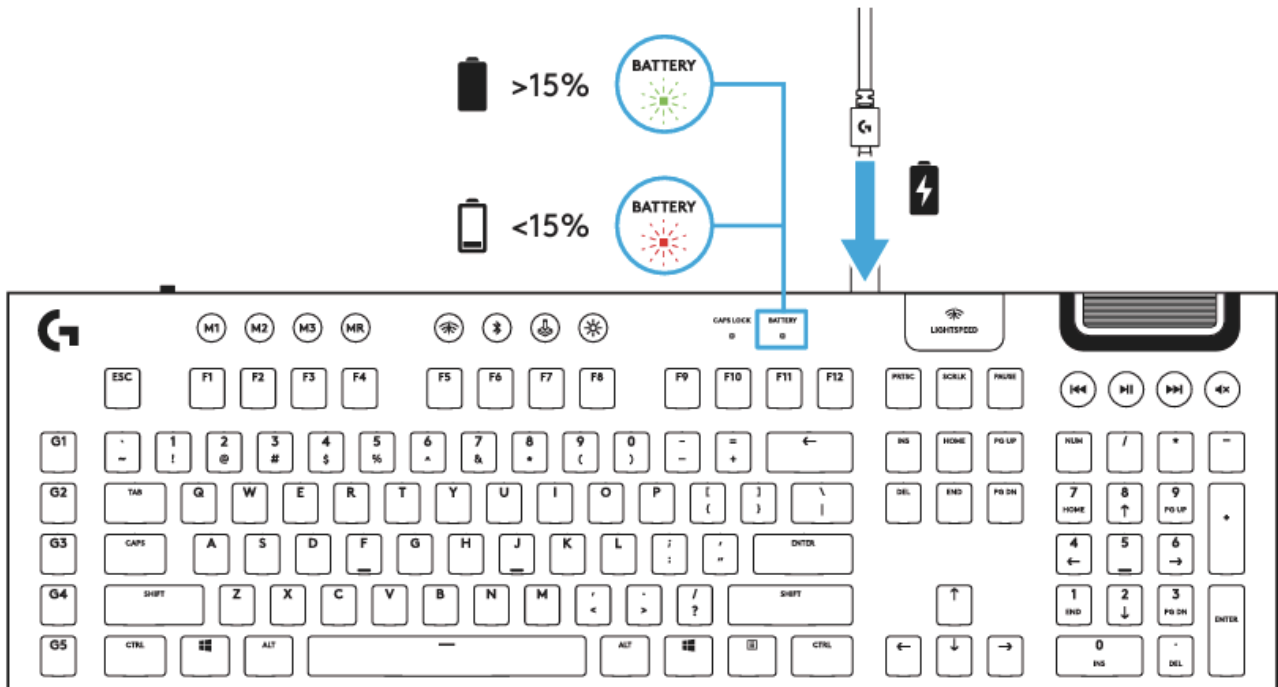
Media controls



G915 has media controls, located in the upper right corner of the keyboard.

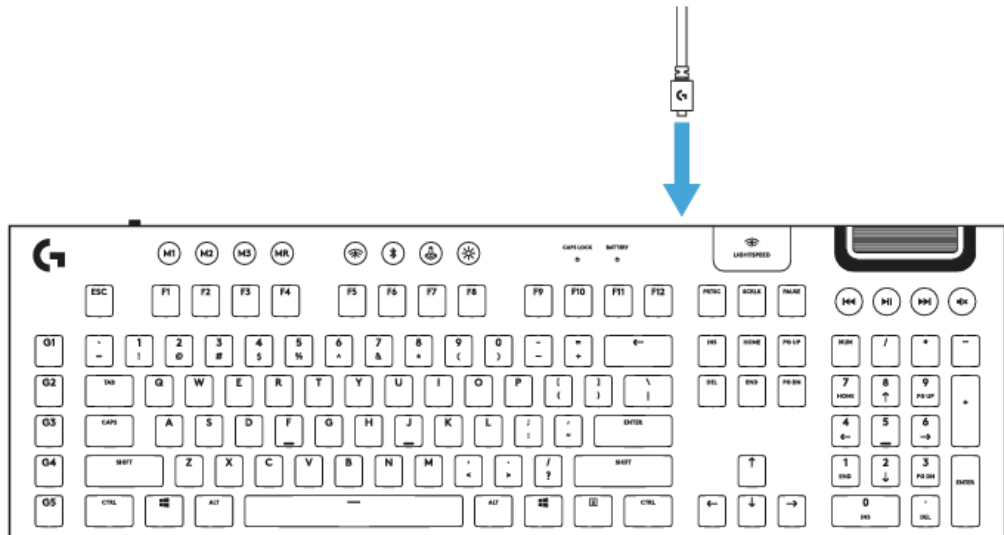
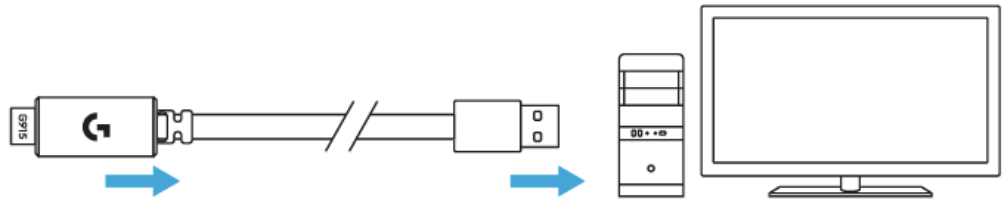
- **Volume roller** — controls volume of the active audio on your PC.
- **Skip back** — goes to the beginning of a track, or to a previous track, depending on the application.
- **Play/Pause** — starts or stops the audio or video source playback.
- **Skip forward** — goes to the end of the track or to the next track, depending on the application.
- **Mute** — stops audio output.

Battery indicators



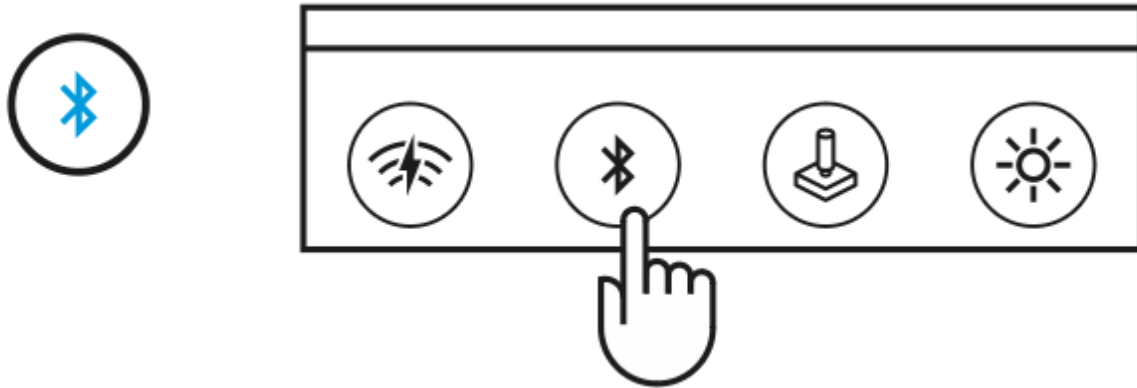
- Pulses **green** when charging.
- Shows **green** momentarily when started when battery is above 15%.
- Shows **red** when keyboard needs charging.

Wireless controls



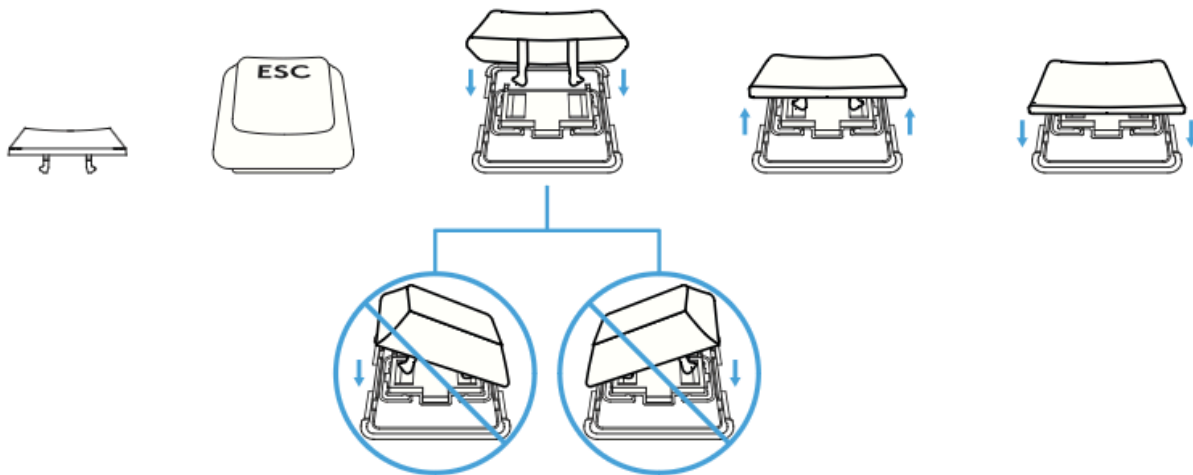
LIGHTSPEED button selects LIGHTSPEED wireless connection, which connects to the PC or Mac using the included receiver dongle. It shows white when connected, blue when wired connection.

BLUETOOTH®



Bluetooth button connects to devices via a Bluetooth connection. It shows blue when connected.

Keycap removal + replacement



Care and cleaning

To clean the keyboard, use a soft, lint-free or microfiber cloth. A damp cloth can be used. Do not use harsh cleaning solutions. Do not immerse the keyboard or expose it to liquids.

SPECIFICATIONS

Physical Specifications				
Length	Width	Height	Weight	Cable Length
18.71 in (475 mm)	5.91 in (150 mm)	0.87 in (22 mm)	36.16 oz (1025 g)	5.9 ft (1.8 m)

Technical Specifications		
LOW PROFILE GL SWITCHES		
Actuation distance	Actuation force	Total travel distance
0.06 in (1.5 mm)	1.76 oz (50 g)	0.11 in (2.7 mm)

FAQs

- [Bluetooth – Pairing and Troubleshooting](#)

Connect your device

VIDEO: [Connecting your Logitech Bluetooth devices](https://youtu.be/zKg2G3u0APM) : youtu.be/zKg2G3u0APM

Prepare your Logitech device for Bluetooth pairing

Most Logitech products are equipped with a Connect button and will have a Bluetooth Status LED. Usually the pairing sequence is started by holding down the Connect button until the LED starts blinking rapidly. This indicates that the device is ready for pairing.

Select your operating system to learn how to connect your Logitech device:

- [Windows](#)
- [macOS](#)
- [Chrome OS](#)
- [Android](#)
- [iOS / iPadOS](#)

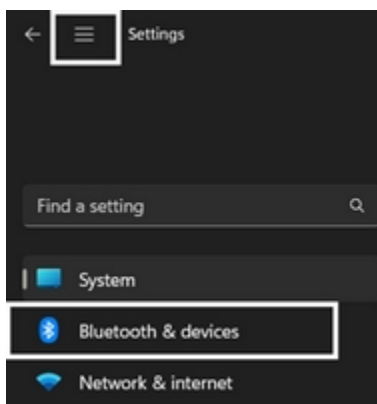
Windows

Select the version of Windows you're running and then follow the steps to pair your device.

- [Windows 11](#)
- [Windows 10](#)
- [Windows 8](#)

Windows 11

1. Click the **Windows icon**, then select **Settings**.
2. In the top left corner of the Settings window, click the **Menu icon**, and then select **Bluetooth & devices**.



3. Click **Add device**, select the Logitech device you want to connect to, and then click **Pair**.
4. Follow the onscreen instructions to finish pairing.

Windows 10

1. Select the **Windows icon**, then select **Settings**.
2. Select **Devices**, then **Bluetooth** in the left pane.
3. In the list of Bluetooth devices, select the Logitech device you want to connect to and select **Pair**.
4. Follow the onscreen instructions to finish pairing.

Windows 8

1. Go to **Apps**, then find and select **Control Panel**.
2. Select **Devices and Printers**.
3. Select **Add a device**.
4. In the list of Bluetooth devices, select the Logitech device you want to connect to and select **Next**.
5. Follow the onscreen instructions to finish pairing.

NOTE: It may take up to five minutes for Windows to download and enable all drivers, depending on your computer's specifications and your internet speed. If you have not been able to connect your device, repeat the pairing steps and wait a while before you test the connection.

macOS

1. Open **System Settings** and click **Bluetooth**.
2. Select the Logitech device you want to connect to from the Devices list and click **Connect**.
3. Follow the onscreen instructions to finish pairing.

Upon pairing, the LED light on your Logitech device stops blinking and glows steady for 5 seconds. The light then turns off to save energy.

Chrome OS

1. Click the status area in the lower right corner of your desktop.
2. Click **Bluetooth enabled** or **Bluetooth disabled** in the pop-up menu.
NOTE: If you had to click on Bluetooth disabled, that means the Bluetooth connection on your Chrome device needs to first be enabled.
3. Select **Manage devices...** and click **Add Bluetooth device**.
4. Select the name of the Logitech device you want to connect to from the list of available devices and click **Connect**.
5. Follow the onscreen instructions to finish pairing.

Upon pairing, the LED light on your Logitech device stops blinking and glows steady for 5 seconds. The light then turns off to save energy.

Android

1. Go to **Settings and Networks** and select **Bluetooth**.
2. Select name of the Logitech device you want to connect from the list of available devices and click **Pair**.
3. Follow the onscreen instructions to finish pairing.

Upon pairing, the LED light on the Logitech device stops blinking and glows steady for 5 seconds. The light then turns off to save energy.

iOS / iPad

1. Open **Settings** and click **Bluetooth**.
2. Tap on the Logitech device you want to connect to from the **Other Devices list**.
3. The Logitech device will be listed under My Devices when paired successfully.

Upon pairing, the LED light on the Logitech device stops blinking and glows steady for 5 seconds. The light then turns off to save energy.

Bluetooth troubleshooting tips

Logitech Bluetooth device doesn't connect with computer, tablet or phone

Bluetooth allows you to connect your device wirelessly to your computer without using a USB receiver.

Follow these steps to connect via Bluetooth:

Check if your computer is compatible with the latest Bluetooth technology

The latest generation of Bluetooth is called **Bluetooth Low Energy** and is not compatible with computers that have an older version of Bluetooth (called Bluetooth 3.0 or Bluetooth Classic).

NOTE: Computers with Windows 7 cannot connect with devices that use Bluetooth Low Energy. Make sure that your computer has a recent operating system:

- Windows 8 or later
- macOS 10.10 or later

Check if your computer hardware supports Bluetooth Low Energy.

Set your Logitech device in 'pairing mode'

In order for the computer to see your Logitech device, you need to put your Logitech device in discoverable mode or pairing mode.

Most Logitech products are equipped with a Bluetooth button or Bluetooth key and have a Bluetooth status LED.

- Make sure your device is turned ON
- Hold down the Bluetooth button for three seconds, until the LED starts blinking rapidly. This indicates that the device is ready for pairing.

Complete the pairing on your computer

You will need to complete the Bluetooth pairing on your computer, tablet or phone.

See [Connect your Logitech Bluetooth device](#) for more information on how to do this depending on your operating system (OS).

My Logitech Bluetooth device frequently gets disconnected or laggy

Follow these steps if you experience disconnections or lag with your Logitech Bluetooth device.

1. Make sure that **Bluetooth is ON** or enabled on your computer.
2. Make sure your Logitech product is **ON**.
3. Make sure that your Logitech device and computer are within close proximity of each other.
4. Try moving away from metal and other sources of wireless signal.
 - a. Try moving away from:
 - i. Any device that could emit wireless waves: Microwave, cordless phone, baby monitor, wireless speaker, garage door opener, WiFi router
 - ii. Computer power supplies
 - iii. Strong WiFi signals ([learn more](#))
 - iv. Metal or metal wiring in the wall
5. Check the battery of your Logitech Bluetooth product. Low battery power can adversely affect connectivity and overall functionality.
6. If your device has removable batteries, try removing and re-inserting the batteries in your device.
7. Make sure your operating system (OS) is up to date.

Send a feedback report to Logitech

Help us improve our products by submitting a bug report using our Logitech Options Software:

- Open Logitech Options.
- Click **More**.
- Select the problem you see and then click **Send feedback report**.
- [My LIGHTSPEED receiver is stuck updating its firmware](#)

If you updated your LIGHTSPEED receiver and G HUB shows *"Updating LIGHTSPEED Receiver. Please keep it plugged in"* for more than three minutes, you will need to perform the following steps to resolve it.

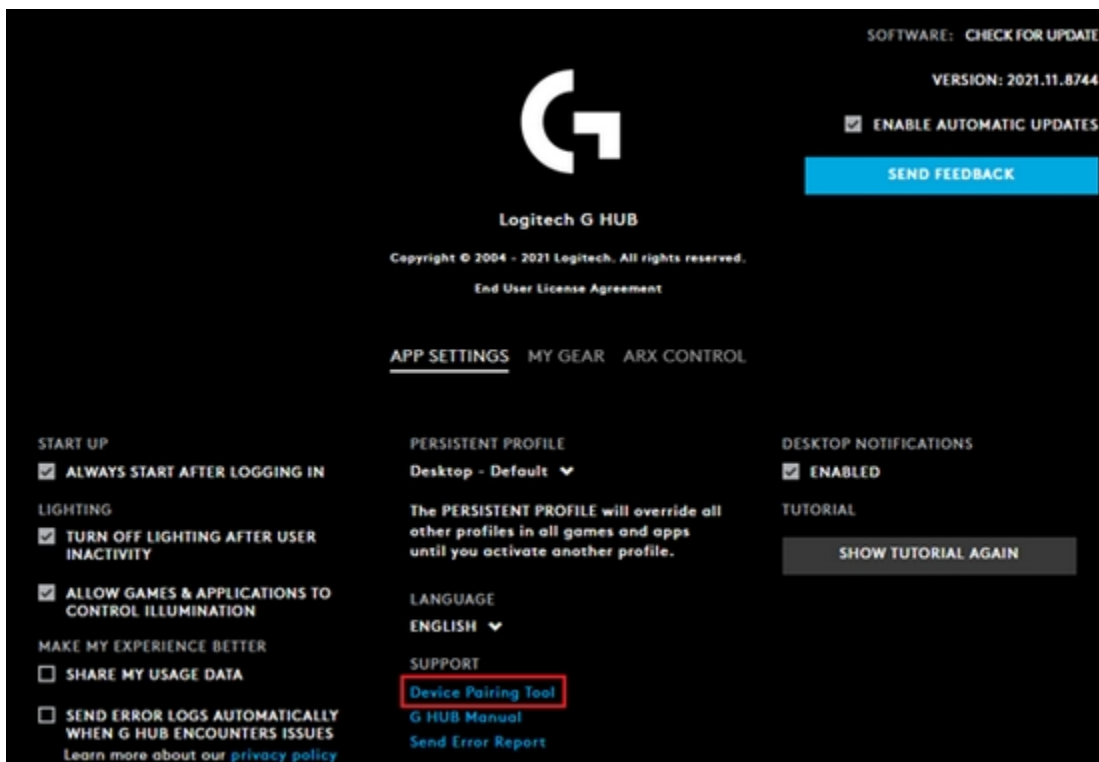
1. Unplug and then replug in your receiver. This step may resolve your issue. If it doesn't, go to the next steps.

NOTE: If you're using the receiver with the adapter, please disconnect the receiver from the adapter, then plug the receiver into a USB port and connect the USB cable to the mouse or keyboard.

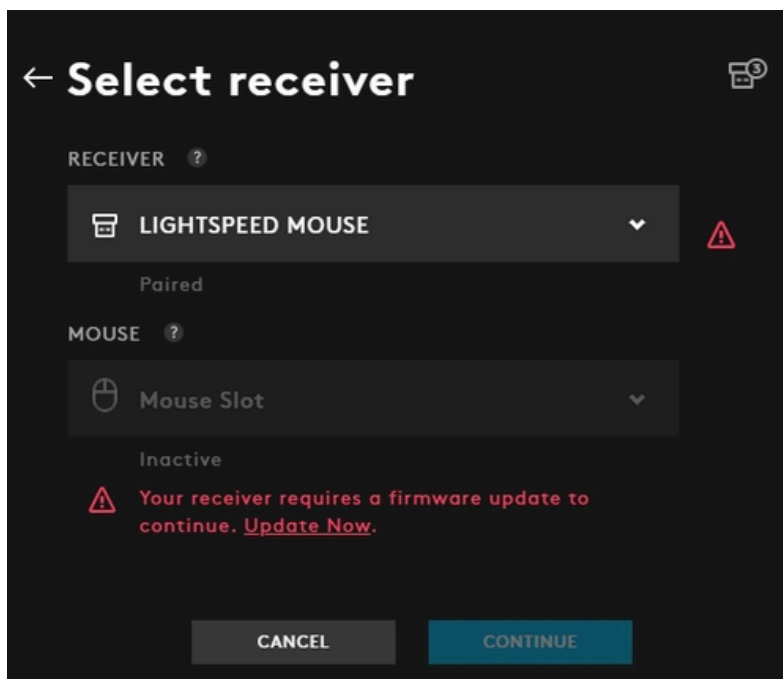
2. Click on the gear icon to go to **G HUB Settings**.



3. Click on **Device Pairing Tool**.



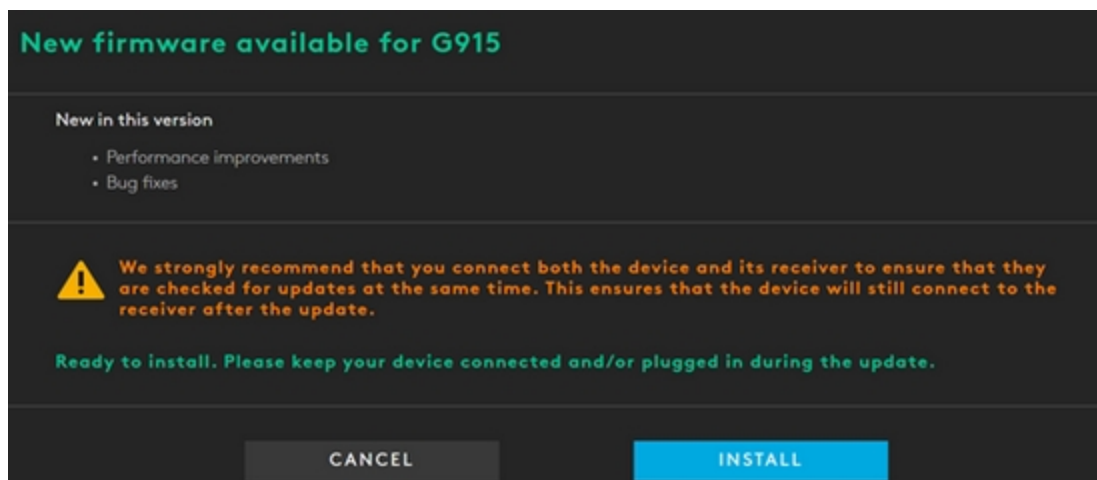
4. Choose the product you want to pair with (mouse or keyboard). Confirm that the receiver is detected by the Device Pairing Tool as shown in the screenshot, then continue and follow the on-screen instructions.



5. If your device has lost its connection to the LIGHTSPEED receiver after you've updated G HUB, go to [Device lost connection to LIGHTSPEED receiver after G HUB update](#).

- [Device lost connection to LIGHTSPEED receiver after G HUB update](#)

Make sure to plug the receiver in and connect the device using the charging cable. G HUB will update the firmware for both the device and LIGHTSPEED receiver simultaneously. If you update either the device or receiver without updating the other one, G HUB should prompt you to update the firmware for the other when they are both connected.



Use the following steps if you aren't able to update the firmware on your device or receiver through G HUB at the same time.

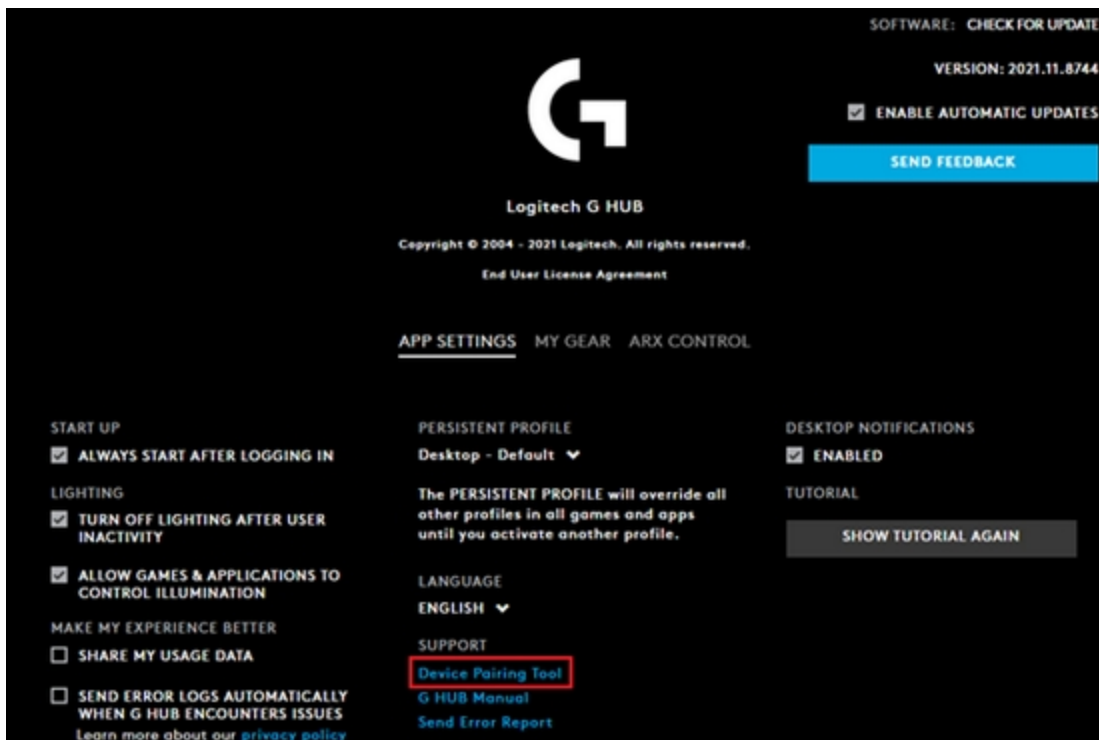
1. Make sure your device has updated its firmware by connecting it to its charging cable and a USB port on your computer.
2. Open G HUB and click **Install** if you see the firmware update banner. Follow the on-screen instructions.
3. With G HUB opened, unplug and replug your LIGHTSPEED receiver into a different USB port. Follow any on-screen instructions. If you don't see the option to install the firmware for the receiver, please follow the next steps.

NOTE: If you're using the receiver with the adapter, please disconnect the receiver from the adapter, then plug the receiver into a USB port and connect the USB cable to the mouse/keyboard.

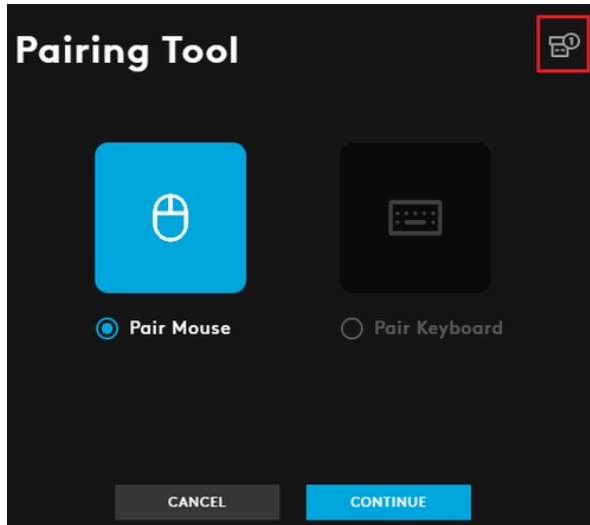
4. Click the gear icon to go to **G HUB Settings**.



5. Click **Device Pairing Tool**.



6. Choose the product you want to pair with (mouse or keyboard). Confirm that the receiver is detected by the Device Pairing Tool as shown in the screenshot, then continue and follow the on-screen instructions.



7. If this doesn't work, please unplug and replug in your receiver to try the steps above again.

If you see the message "Updating LIGHTSPEED Receiver. Please keep it plugged in" go to: [My LIGHTSPEED receiver is stuck updating its firmware.](#)

- Using the Device Pairing Tool in G HUB

The Device Pairing Tool in Logitech G HUB allows you to pair replacement USB receivers with your mouse or keyboard. The Device Pairing Tool also allows you to connect two LIGHTSPEED devices to one LIGHTSPEED keyboard receiver using the Device Pairing Tool. You may also use this tool to pair your mouse with Logitech POWERPLAY.

The Device Pairing Tool will allow you to select the receiver and the device you want to pair it with. The receiver selected will determine what devices can be paired with it. The compatible devices that can be paired with the selected receiver will be shown afterward.

You may need to update the firmware on your device before using the Device Pairing Tool. Please follow any on-screen instructions you receive if G HUB informs you that your device firmware is out-of-date.

- [Logitech G HUB – FAQs](#)

VIDEO: youtu.be/a5a4iAhTaho

About G HUB

See the following link for more information:

<https://support.logi.com/hc/en-us/articles/4461144061975-Logitech-G-HUB-FAQs>

WARRANTY – G915 LIGHTSPEED

Wireless RGB Mechanical Gaming Keyboard

[2 year limited hardware warranty](#)

See Terms of Use here: logitech.com/en-my/tos/terms.html?id=3101

At Logitech, it is our goal to ensure you are completely satisfied with your Logitech purchase. We take pride in the products and services we offer, and want our customers to enjoy them just as much as we do. If you are experiencing an issue, please click on the following link to learn more about the Logitech warranty.

Check our Logitech Warranty here:

<https://support.logi.com/hc/en-us/articles/360023361413-Warranty-FAQ-AMR-AP>

CONTACT US

Would you like to speak with us? We're here to help.

Get 24/7 live support with chat here: logitech.com/support

Phone: (Local) +1 646-454-3200

(Toll Free) +1 866-632-5644

Monday – Friday:

9:00 a.m. – 9:00 p.m. Eastern Time

DOWNLOAD

See here to download G Hub:

download01.logi.com/web/ftp/pub/techsupport/gaming/lghub_installer.zip