



QUICK  
START  
GUIDE

YOUR COLD DAY IN THE SUMMER  
[www.acjhs.com](http://www.acjhs.com)

# QUICK START GUIDE

WINDOW KIT INSTALLATION

This window slider kit has been designed to fit most standard "Vertical" and "Horizontal" window applications; however, it may be necessary for you to improvise / modify some aspect of the installation procedures for certain types of window.

*Minimum and maximum window openings:*

**MAXIMUM: 57" (145 cm)**

**MINIMUM: 9" (23cm)**

**NOTE:**

·Adjust to desired length and use provided metal wing nuts and bolts to secure.

·If the window opening is less than 18" the minimum length of the Panel A, cut A with a hole in it short to fit for the window opening.

·Never cut out the hole in Panel A

**For a 9"-18" window opening, use panel A (Cut short if necessary)**



**For a 19"-38" window opening, use panel A+B (Cut short A if necessary)**



**For a 39"-57" window opening, use panel A+B+C**



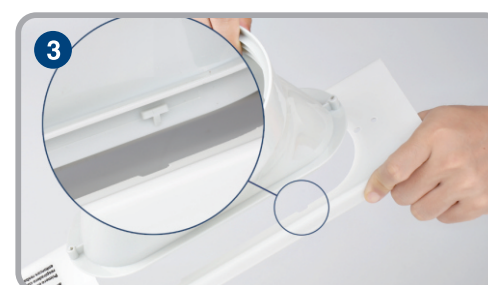
CONNECT HOSE TO WINDOW KIT



Stretch the vent hose 6inch(15CM) to facilitate the installation of the exhaust nozzle.



Rotate the vent hose into the exhaust nozzle A counterclockwise, and check to see that it are fastened securely to the hose.



Slide it for locking.



Insert hose outlet into the window panel A fully.



If you want fix the connection more firmly, use the type A serew.