

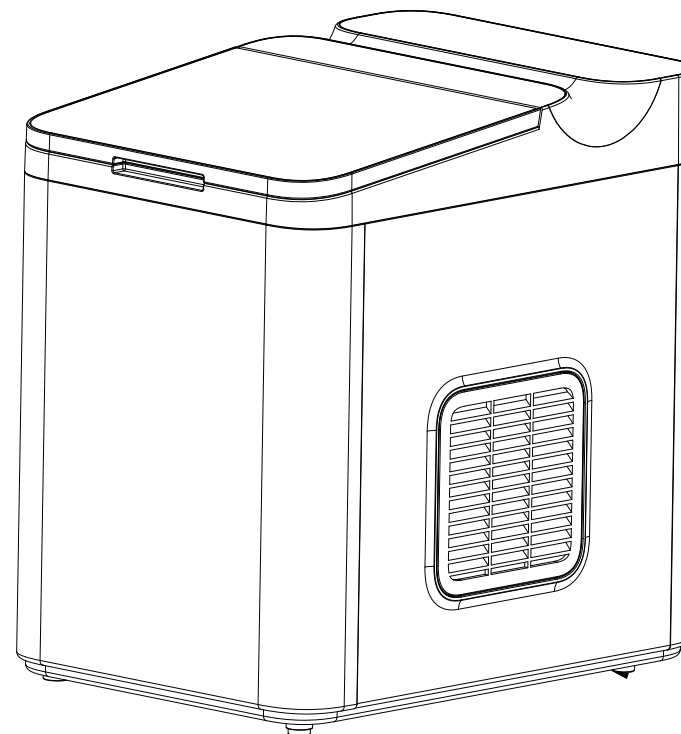


COSTWAY®

**Please give us a chance to make it right and do better !**

Contact our friendly customer service department for help first.  
Replacements for missing or damaged parts will be shipped ASAP !

US office: Fontana    UK office: Ipswich    AU office: Truganina



## Contact Us !

**Do NOT return this item.**

Contact our friendly customer service department for help first.



US: cs.us@costway.com  
UK: cs.uk@costway.com  
AU: cs.au@costway.com

## USER'S MANUAL

### ICE MAKER FP10078US

THIS INSTRUCTION BOOKLET CONTAINS **IMPORTANT** SAFETY INFORMATION. PLEASE READ AND KEEP FOR FUTURE REFERENCE.



## Before You Start

- ⚠ Please read all instructions carefully.
- ⚠ Retain instructions for future reference.
- ⚠ Separate and count all parts and hardware.
- ⚠ Read through each step carefully and follow the proper order.
- ⚠ We recommend that, where possible, all items are assembled near to the area in which they will be placed in use, to avoid moving the product unnecessarily once assembled.
- ⚠ Always place the product on a flat, steady and stable surface.
- ⚠ Keep all small parts and packaging materials for this product away from babies and children as they potentially pose a serious choking hazard.

***It is important that you read these instructions before using your portable ice maker and we strongly recommend that you keep them in a safe place for future reference.***

### IMPORTANT SAFETY TIPS

Your personal safety and safety of others are the most important. We have prepared many safety tips related to this machine for you. Be sure to read and follow these tips.

This is a security warning sign ⚠

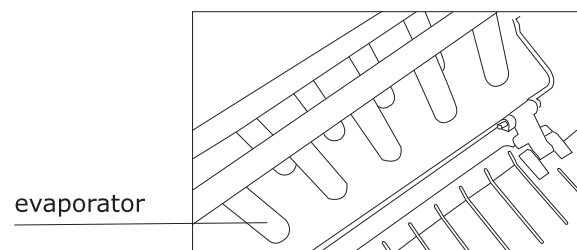
All security alerts follow the words "danger" and "warning".

If you do not comply with these safety tips, you may be seriously injured. All safety tips describe potential hazards, and tell you how to reduce the chances of injury and what will happen if you do not follow the safety tips.

#### ⚠ DANGER

#### ⚠ Warning

If the ice maker is in use or making ice, please do not touch the evaporator, which may freeze your skin.



Before using electrical appliances, basic safety rules must be observed to reduce fire, electric shock and damage to people or material. Please read the safety tips carefully before using this appliance.

- The appliance is not to be used by persons (including children) with reduced physical, sensory or mental capabilities, or lack of experience and knowledge, unless they have been given supervision or instructions.
- This appliance can be used by children aged from 8 years and above and persons with reduced physical, sensory or mental capabilities or lack of experience and knowledge if they have been given supervision or instruction concerning use of the appliance in a safe way and understand the hazards involved.
- Children shall not play with the appliance. Cleaning and user maintenance shall not be made by children without supervision.
- Please follow local regulations regarding disposal of the appliance for its flammable blowing gas. Before you scrap the appliance, please take off the doors to prevent children being trapped.
- WARNING:** fill with potable water only.
- WARNING –** Keep ventilation openings, in the appliance enclosure or in the built-in structure, clear of obstruction.
- WARNING –** Do not use mechanical devices or other means to accelerate the defrosting process, other than those recommended by the manufacturer.
- WARNING –** Do not damage the refrigerant circuit.

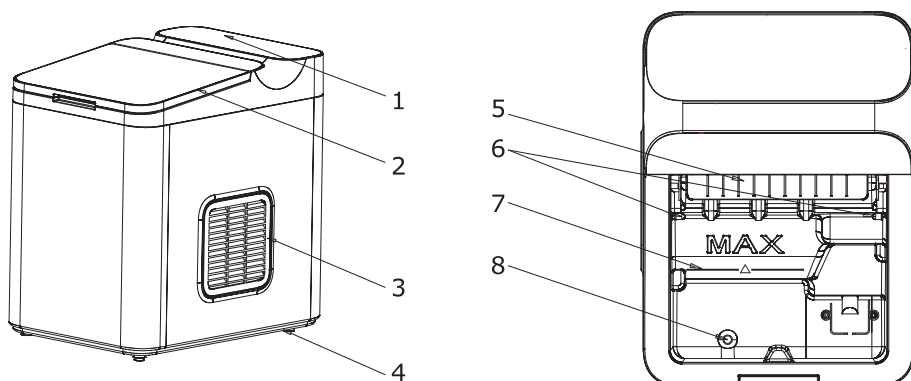
- WARNING –** Do not use electrical appliances inside the food storage compartments of the appliance, unless they are of the type recommended by the manufacturer.
- WARNING:** When positioning the appliance, ensure the supply cord is not trapped or damaged.
- WARNING:** Do not locate multiple portable socket-outlets or portable power supplies at the rear of the appliance.
- Children aged from 3 to 8 years are not allowed to load and unload refrigerating appliances.
- Do not store explosive substances such as aerosol cans with a flammable propellant in this appliance.
- If the supply cord is damaged, it must be replaced by the manufacturer or the qualified person in order to avoid a hazard.
- This appliance is intended to be used in household and similar applications such as:**
  - staff kitchen areas in shops, offices and other working environments;
  - farm houses and by clients in hotels, motels and other residential type environments;
  - bed and breakfast type environments;
  - Catering and similar non-retail applications.



**Warning:** risk of fire / flammable materials

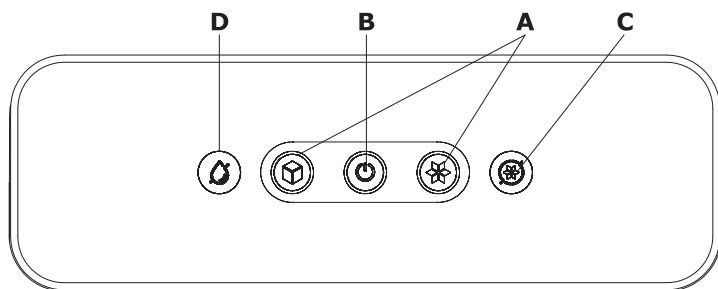
## A PRELIMINARY UNDERSTANDING OF YOUR ICE MAKER

1. Control panel
2. **Upper cover:** transparent glass window to make the interior visible.
3. **Out of the wind Network:** to ensure smooth wind, should be more than 15cm(6") distance from objects.
4. Non-slip foot pads at the bottom
5. Ice scraper
6. **Infrared ice sensor:** ice blocking infrared reception, the display panel is full of lights.
7. **Upper limit of water supply:** "MAX" scale line.
8. **Drain plug:** pull up to drain the water at the bottom of the water tank.



### Control Panel:

- A. **Choose the size of the ice block:** small, large  
 B. Power indicator, ON/OFF  
 C. Ice full indicator  
 D. **Water shortage indicator :** prompt you to add water to water tank



## OPERATING PROCEDURES & MAINTENANCE

### Open the package

1. Remove all inside and outside packing. Check whether there are ice basket and ice spoon. If any attachment is missing, please contact customer service department.
2. Remove the ice basket and wipe it in warm water, then rinse the water tank with warm water and soft cloth.
3. Clean the column of the evaporator with water or alcohol.
4. Put the ice maker in the place without direct sun exposure and keep away from heat and radiation. The ice maker is placed horizontally and there is at least 15cm(6") gap on both sides and rear.
5. The ice maker should be placed where it can be powered by a suitable socket.

### Ice maker connected to the power supply



The risk of electric shock may be caused by incorrect use of grounding wires. If the power cord is damaged, please contact the after sales department.

1. For your safety, the ice maker must be grounded reliably.
2. The machine needs a standard 120V / 60Hz grounding power supply.
3. If the power cord is damaged, it must be replaced and repaired by the professional personnel to avoid the danger.
4. Away from the fire source and high temperature heating objects.
5. Do not use in inflammable and explosive environment such as gas, so as to avoid accidents.

### Ice making machine cleaning

Before using the ice maker, it is strongly recommended that you thoroughly clean the whole machine.

1. Take out the ice basket.
2. Open the drain plug and dry the water in the water tank.



3. Wipe the bladder with diluted detergent, warm water and soft cloth.
  4. The outside of the machine should be scrubbed with diluted detergent and warm water.
  5. Dry the inner liner with another piece of soft cloth.
  6. Shut down the drain plug.
- When the machine is not used for a long time, the water in the tank should be dried completely.

## USING YOUR ICE MAKER

1. Press the "SELECT" key to select the size of the ice. If the room temperature is lower than 59°F, it is recommended that you choose the small ice to prevent icing.
2. Open the upper cover, take out the ice basket and add water to the water tank, keep the water level below the highest water level, then put it back into the ice basket, close the upper cover, and suggest that the water level should not exceed the bottom of the ice basket.
3. Press the "ON / OFF" button on the control panel to start ice making.
4. Each ice cycle lasts 6 to 13 minutes, depending on the size of the ice and the temperature of the room. The size of the ice is also related to the water temperature and the environment temperature.
5. After the ice maker starts, the water level in the water tank should be checked regularly. If the water pump does not come out of water, the ice maker will automatically stop, and the "ADD WATER" indicator light indicates the water shortage. Then the water should be added to the water tank, and then the "ON / SELECT" key should be pressed to start the ice making again.
6. It is suggested that water should be changed every 24 hours to keep the water clean. If the ice maker is not used for a long time, drain the remaining water in the water tank.

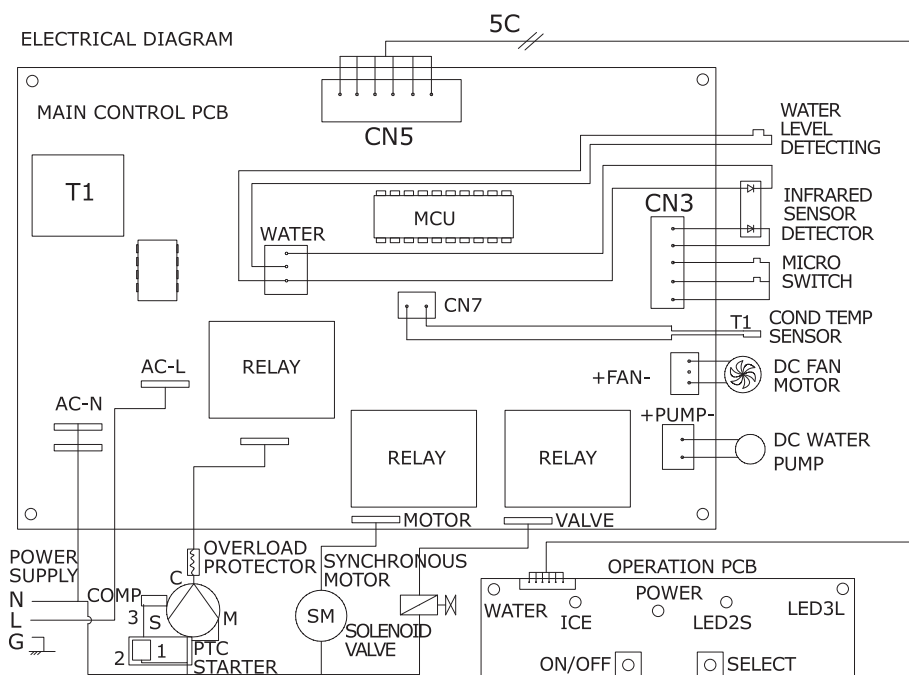
**Suggestion: use water that can be used directly.**

## TROUBLESHOOTING

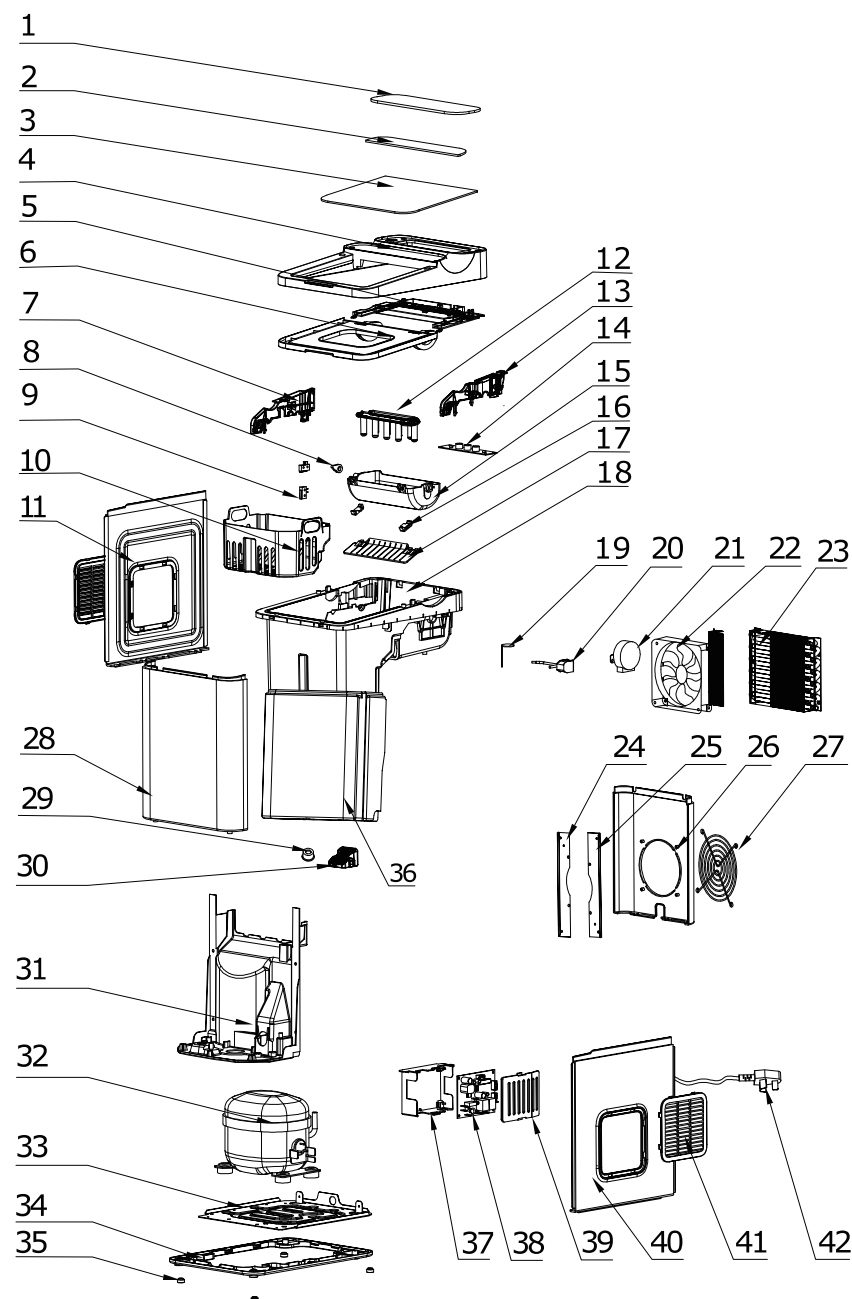
PROBLEM	POSSIBLE CAUSE	SOLUTION
The "Add Water" indicator lights up	1. Lack of water 2. Filter screen plug at the bottom of the water tank 3. The induction needle is not in the middle of the hole	1. Stop making ice, add water, press "ON / OFF" Key restarts ice making 2. Cleaning. 3. Adjust the position of the induction needle
"ICE FULL" indicator is on.	1. There is too much ice in the ice basket. 2. The ice full sensor is broken. 3. Water infiltrates into the induction lamp	1. Remove the ice from the ice basket. 2. Contact the manufacturer to change the sensor.
Ice full light flicker	The ice shovel was stuck	If the ice is stuck in the ice shovel, take the ice. Otherwise, please consult the after-sales service staff.
The ice is linked together	The ice making cycle is too long	Stop the ice maker, and restart it when the ice cubes melt. Select the small size ice cube selection.
	Water temperature in inner tank is too low	Replace the water in the water tank, the water temperature is best between 46.4°F and 89.6°F.
Ice making cycle is normal but no ice formed.	Exorbitant ambient temperature or water temperature	Please make ice when the ambient temperature is below 89.6°F and give a certain amount of cold water to the water tank.
	Leakage of refrigeration system	Contact after service personnel
	Clogging of the refrigeration system	Contact after service personnel

## TECHNICAL PARAMETERS & CIRCUIT DIAGRAM

Model	FP10078US(GSN-Z6B)
Climate Type	SN/N/ST
Safety Grade	I
Voltage	115V~/60Hz
Rated Current	2.0A
Refrigerant	R600a/26g
Vesicant	Cyclopentane
Shell Material	Plastic



## EXPLOSIVE DRAWINGS



NO.	Material	Part Name
1	Tempered glass 3.0	Touchpad glass
2	Tempered glass 3.0	Flip cover frame glass
3	Tempered glass 3.0	Flip cover glass
4	ABS	Flip cover frame
5	ABS	Waterproof cover
6	ABS	Flip cover
7	ABS	Left bracket
8	ABS	Cam
9	Electrical components	Micro switch
10	ABS	Ice basket
11	ABS	Left side panel
12	Copper plating	Ice tray
13	ABS	Right bracket
14	PCB	Button board
15	ABS	Water tank
16	ABS	Water tank connection
17	ABS	Water tank connecting piece
18	ABS	Main body
19	Stainless steel	Water flow probe
20	Electrical components	Solenoid valve
21	Electrical components	Synchronous motor
22	System components	Fan
23	System components	Condenser
24	Galvanized sheet 1.0	Left bracket

NO.	Material	Part Name
25	Galvanized sheet 1.0	Right bracket
26	ABS	Rear cover
27	Iron plating	Fan cover
28	ABS	Front panel
29	Silicone parts	Water plug
30	PP	Filter cover
31	ABS	Main body lining
32	Electrical components	Compressor
33	Galvanized sheet 1.0	Compressor bottom plate
34	ABS	Bottom frame
35	EVA	Anti-slip mat
36	EPS	Main body foaming
37	Flame-retardant ABS	Electric control box
38	PCB assembly	Electronic control board
39	Flame-retardant ABS	Electric control box cover
40	ABS	Right side panel
41	ABS	Exhaust cover
42	Electrical components	Power cord

#### Correct Disposal of This Product



This marking indicates that this product should not be disposed with other household wastes throughout the EU. To prevent possible harm to the environment or human health from uncontrolled waste disposal, recycle it responsibly to promote the sustainable reuse of material resources. To return your used device, please use the return and collection systems or contact us. They can take this product for environmental safe recycling.