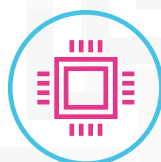


# IdeaCentre 510A

## UPGRADE YOUR FAMILY DESKTOP PC

### A DESKTOP KEEPING YOUR FAMILY CONNECTED

Great for family members to connect and share, the Lenovo™ IdeaCentre™ 510A is equipped with an AMD A12 processor and AMD Radeon™ R7 graphics. In addition to 1 TB HDD of storage, the Lenovo IdeaCentre 510A offers your own storage assistant – Lenovo Family Cloud where you can share any content you like with your family members and friends.



#### Flawless performance

Built with an AMD A12 processor and complete with AMD Radeon™ R7 graphics, the IdeaCentre 510A is the perfect combination of daily work and entertainment.



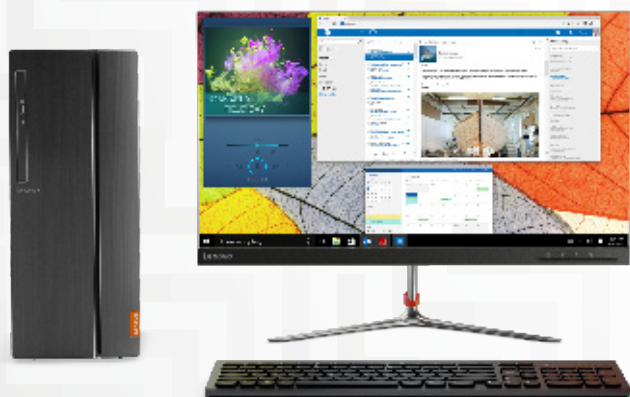
#### Lenovo family cloud

A central interface for your secured data storage features smart recognition technology, and effortlessly upload and download between your mobile and PC within the same network.



#### Connects to all your accessories

Your monitor, keyboard, external hard drive, camera and favorite speakers don't need to vie for available ports on the IdeaCentre 510A. This machine offers multiple ways to connect.



[WWW.LENOVO.COM](http://WWW.LENOVO.COM)

Lenovo™

# IdeaCentre 510A

## SPECIFICATIONS

PN: 90GU0006US

### PERFORMANCE

**Processor**

AMD A12-9800 Processor

**Operating System**

Windows 10

**Graphics**

AMD Radeon™ R7 Graphics

**Memory**

12 GB DDR4

**Storage**

1 TB HDD

**Optical Drive**

DVD RW

### CONNECTIVITY

**WLAN**

WiFi 802.11 a/c

**Bluetooth®**

Bluetooth® 4.0

**I/O (Input/Output) Ports**

4 x USB 3.0

2 x USB 2.0

1 x VGA

1 x HDMI™

1 x LAN

2 x Mic/Audio Combo Jack

### DESIGN

**Volume**

15 Liter

**Dimensions (W x D x H)**

(mm) : 145 x 285 x 366.03

(inches) : 5.71" x 11.22" x 14.41"

**Weight**

Starting at 15.1 lbs (6.85 kg)

**Color**

Gun Metal/Black

### PRELOADED SOFTWARE

- McAfee™ LiveSafe 30 Day Trial
- Microsoft Office 365 30 Day Trial



Lenovo™



[WWW.LENOVO.COM](http://WWW.LENOVO.COM)

Lenovo reserves the right to alter product offerings and specifications at any time, without notice. Lenovo makes every effort to ensure accuracy of all information but is not liable or responsible for any editorial, photographic or typographic errors. All images are for illustration purposes only. For full Lenovo product, service and warranty specifications visit [www.lenovo.com](http://www.lenovo.com). Lenovo makes no representations or warranties regarding third party products or services. **Trademarks:** The following are trademarks or registered trademarks of Lenovo: Lenovo, the Lenovo logo, ideapad, ideacentre, yoga and yoga home. Microsoft, Windows and Vista are registered trademarks of Microsoft Corporation. AMD, the AMD Arrow logo and combinations thereof are trademarks of Advanced Micro Devices, Inc. in the United States and/or other jurisdictions. Other company, product and service names may be trademarks or service marks of others. Battery life (and recharge times) will vary based on many factors including system settings and usage. Visit [www.lenovo.com/lenovo/us/en/safecomp/](http://www.lenovo.com/lenovo/us/en/safecomp/) periodically for the latest information on safe and effective computing. ©2017 Lenovo. All rights reserved.