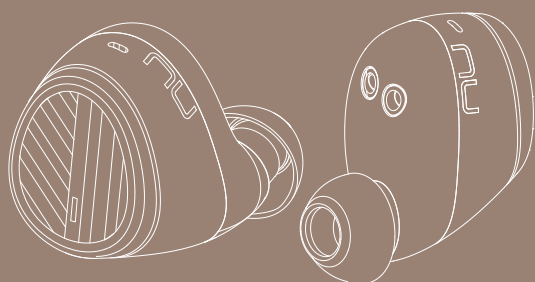




NU FORCE

BE Free5

Truly Wireless Premium Earphones

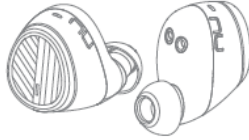
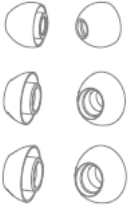
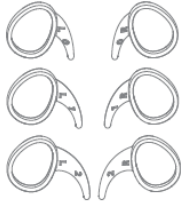
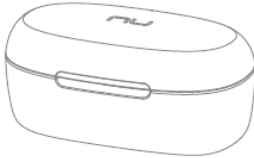





User Manual
Regulatory model name APBEFREEU
Version V 1.0

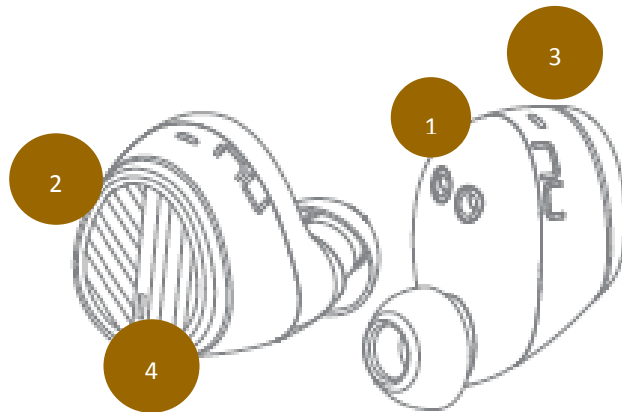
Contents

- **WHAT'S IN THE BOX**
- **BE Free5 EARPHONES**
- **THE BASICS**
 - Charging your BE Free5**
 - Battery Low Alarm and Battery Status**
 - Bluetooth pairing**
 - Power On/ Power Off**
 - Wearing your BE Free5**
 - Handling phone calls and Siri/Google Assistant**
 - Listening to music**
- **MISCELLANEOUS**
 - Restoring factory settings**
 - Voice prompts list**
 - Disclaimer**
 - FCC Interference statement**
 - CE**
 - Specification**

WHAT'S IN THE BOX

Item	
BE Free5 earphones	
Silicon tips CP350 (in L/M/S), CP100Z (in SS), Total of 4 pairs ear tips	 (another pair on the BE Free5)
Wings (in L/M/S), Total 3 pairs	
Charging case	
Charging cable (Micro-USB)	
Basic user's manual	
Safety Instruction	

BE Free5 EARPHONES



1. Charging pins
2. Multifunction button (MFB)
3. Microphone (on the R earpiece)
4. LED indicator

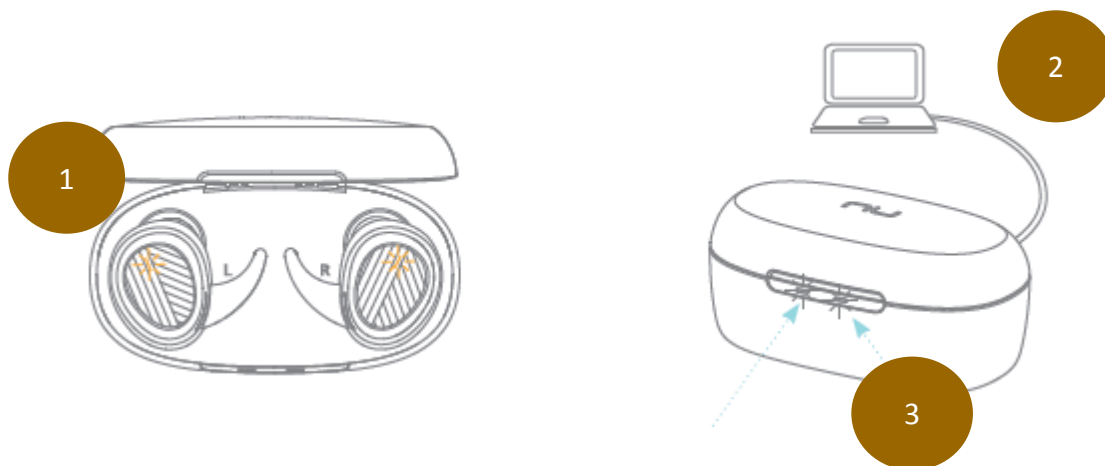
The BASICS

Charging Your BE Free5

Although your BE Free5 earphones come with a partially charged battery, it is recommended that you fully charge your BE Free5 and the charging case before first use.

Note: Please remove the film between charging pins and the earpieces in the case before you charge.

1. Put your BE Free5 into the charging case (1).
The USB charge cable should be connected to the charge port on the charging case (2) and to either a PC or a dedicated USB charger.
2. When charging, the LED indicator(s) on the earpieces and the right LED indicator on charging case (3) will flash orange.
3. Once charging is complete the LED Indicator on the earpieces' will turn off and charging case LED indicator will be solid white.



NOTE:

- A. It takes up to one and a half hours to fully charge the left/right earpieces, and charging case.
- B. To maintain the best performance of the battery, we recommend that the battery in both the earpieces and charging case are charged regularly. Do not deplete the battery of the earpieces and charging case before charging.
- C. To check battery level of the charging case:

Open the top cover, check left LED.

If the left LED indicator is white, the battery is more than 25% capacity,

If the left LED indicator is orange, the battery is less than 25% capacity.

It is strongly recommended that you charge the charging case immediately when the LED indicator turns orange.

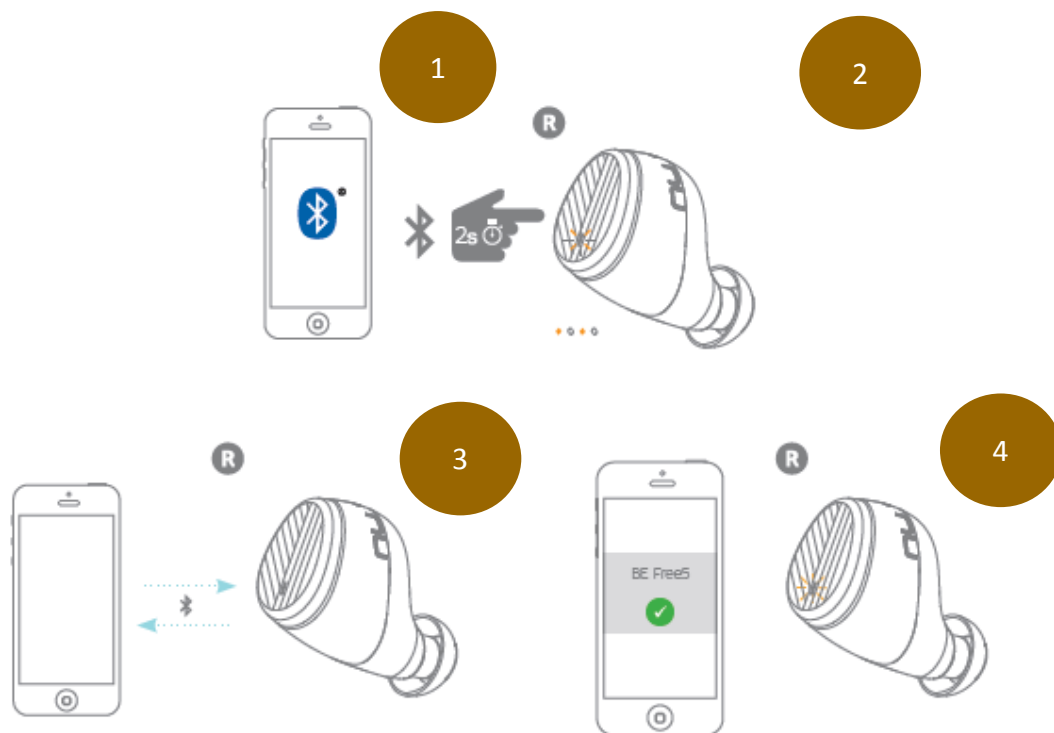
Please note, low battery of the charging case might cause abnormal functionality such as auto on and auto off.

Battery Low Alarm and Battery Status

When the battery level of the earphones are low, you will hear the voice prompt “Battery Low” from your BE Free5 every 2 minutes. The estimated battery reserve remaining time is less than 15 minutes.

Users with iOS devices and some Android models will be able to view the battery status on their device’s display.

Bluetooth Pairing



Using your BE Free5 for the first time

Pairing BE Free5 Right earpiece with source device

1. When pick up the Right earpiece from the charging case, press and hold the BE Free5's Power/Function button for 2 seconds until the LED indicator light flashes orange and white or you hear voice prompt "Pairing mode activated". Your BE Free5 is now in pairing mode.
2. Turn on *Bluetooth*® on your source device, then select "BE Free5" once it appears on the device list.
3. Once successfully paired, the LED indicator will flash white and you hear "Device connected" from your BE Free5.

NOTE:

Consult your source device's user manual for instructions on activating Bluetooth.

Pairing additional devices with your BE Free5

To pair additional devices to your BE Free5 ensure that your BE Free5 is not connected to any device then repeat the steps 1,2,3 outlined above.

Note:

If your BE Free5 have already been paired with eight devices and a ninth device is paired, the stored information for the very first device will be deleted.

Pairing BE Free5 Right earpiece with Left earpiece

Turns on both earpieces and insert them in your ear, both earpieces will automatically connected. You will hear voice prompt “Paired”.

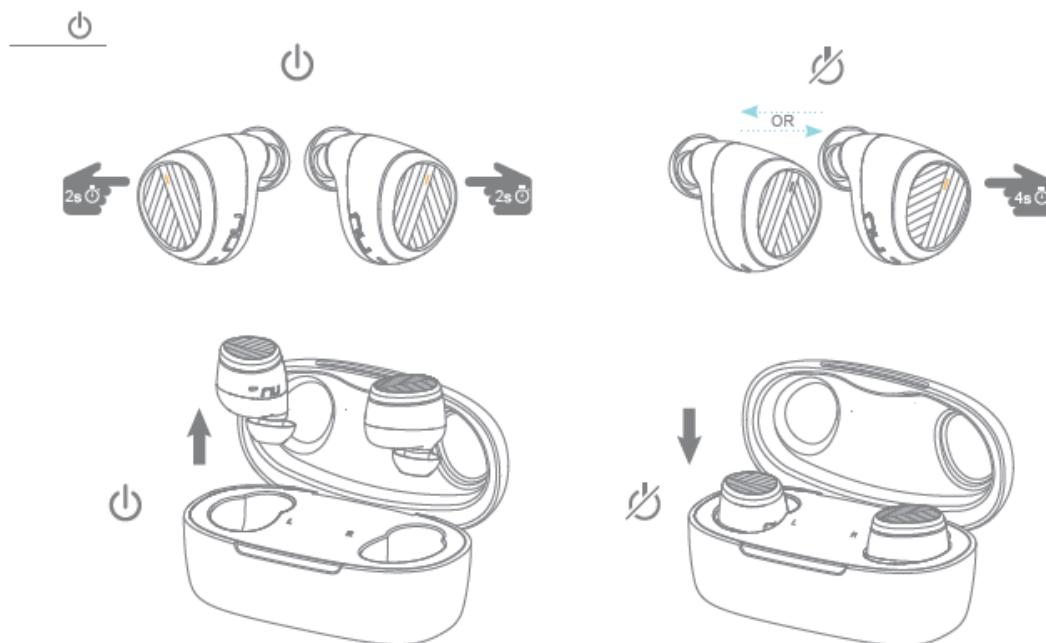
Each unit of BE Free5 are paired in the factory. However, when pairing information is lost, you can follow procedure to restore the pairing information:

1. When the right earpiece is in pairing mode, tap the MFB continuously three times. The LED should flash orange/white slowly.
2. Then press on left earpieces MFB for 10 seconds from power-off state. The LED will also flash orange/white. Wait for few seconds to allow both earpieces to pair. Once pairing is complete the LED on both earpieces' will flash in white.

NOTE:

- A. *If the earpiece is left inactive in pairing mode, your BE Free5 will automatically power off after 10 minutes.*
- B. *Your BE Free5 can store pairing information for up to eight devices.*

Power On/Power Off



There are two ways to turn on your BE Free5

- 1) Pick up the earpieces from the charging case, they will automatically power on.
- 2) When your BE Free5 are not in the charging case and are Off, press Power/Function button for about 2 seconds until the LED indicator flashes white and you hear the voice prompt "Power on" on both earpieces.

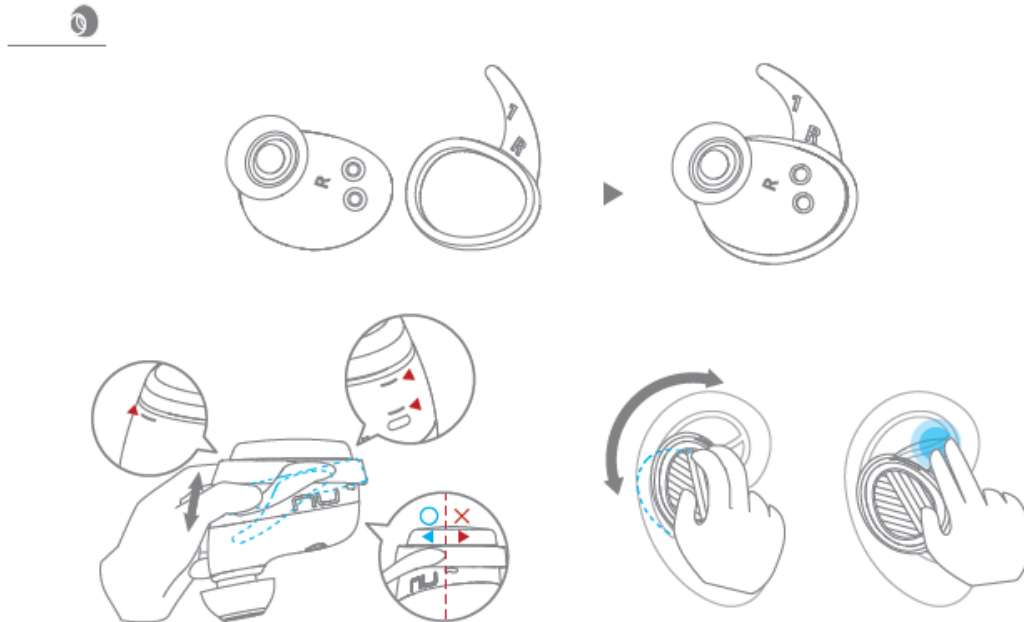
NOTE:

Once you have successfully paired the BE Free5 to a Bluetooth-enabled device, the BE Free5 will automatically connect with that device once it is powered on again. For more information check "Bluetooth Pairing" section.

There are two ways to turn Off your BE Free5

To turn off the BE Free5, either place each earpieces back into the charging case, or to press the Power/Function button on either the left or right earpiece for about 4 seconds until the LED indicator turns orange and you hear the voice prompt "Power off".

Wearing Your BE Free5



To ensure a secure and comfortable fit when wearing your BE Free5:

1. Select right size of ear tips and install tips on BE Free5*, rotate the SpinFit tips CP350 (if wearing this type).
2. Place the BE Free5 into each ear and rotate the earpiece to well fit so that they are positioned comfortably.
3. You can also add additional support by fitting the one of the three available wing sizes to the BE Free5.

NOTE:

1. *There are 4 pairs of silicone ear tips provided. These come in a range of sizes provide comfortable secure fit.
2. Improper positioning of ear wings might have conflict with charging case and cause without charging when you place earpieces back to the charging case.

Handling Phone Calls and Siri/Google Assistant

When your BE Free5 are connected to a *Bluetooth*-enabled smartphone, you can handle your phone calls directly using MFB on right earpiece.

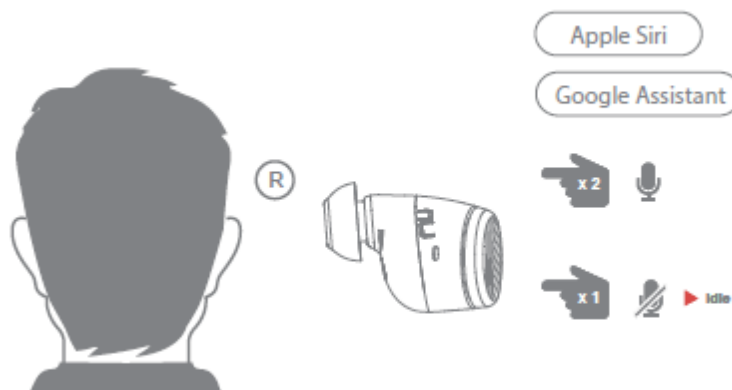
NOTE:

When on a call the right earpiece handles audio

The following functions are available for calls:

Call option	Status	Action
Answer a call	Incoming call	Tap the Power/Function button on right earpiece
End a call	In a call/outgoing call	Tap the Power/Function button on right earpiece
Activate Siri (iOS) or Google Assistant (Android)	Standby/Connected	Double click the Power/Function button on right earpiece To stop it, by clicking on Power/function button

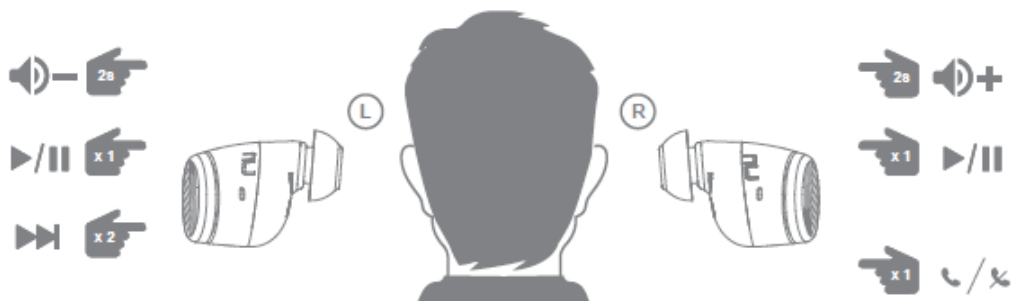
To activate Siri and Google Assistant from listening music or in idle:



Listening to Music

You can enjoy and control audio through Power/Function button on your BE Free5.

Audio option	Action
Play or pause audio	Tap the Power/Function button on either right or left earpiece
Volume up	Press the Power/Function button on right earpiece for 2 seconds*
Volume down	Press the Power/Function button on left earpiece for 2 seconds*
Skip to next track	Double click on the Power/Function button of left earpiece



NOTE:* Press the Power/Function button for 4 seconds will power off the earpieces.

MISCELLANEOUS

Restore Factory Settings

When you restore the BE Free5 to its factory settings, the paired devices stored will be deleted.

To restore factory settings:

- 1** Ensure that your BE Free5 are not connected to any device.
- 2** Put the BE Free5 in pairing mode.
- 3** Double click on the Power/Function button on the right earpiece until the LED indicator flashes in orange/white two times, and you hear short tones from the BE Free5.

Voice Prompts list

The BE Free5 are pre-loaded with English voice prompts

“Power On”

“Power Off”

“Battery Low”

“Device connected”

“Pairing Mode Activated”

“Paired”

Disclaimer

The BE Free5 is equipped with the latest technology however functionality may vary by device.

Federal Communication Commission Interference

Statement

This equipment has been tested and found to comply with the limits for a Class B digital device, pursuant to two different Part 15 rules sections of the FCC. These limits are designed to provide reasonable protection against harmful interference in a residential installation.

This equipment generates, uses and can radiate radio frequency energy and, if not installed and used in accordance with the instructions, may cause harmful interference to radio communications. However, there is no guarantee that interference will not occur in a particular installation. If this equipment does cause harmful interference to radio or television reception, which can be determined by turning the equipment off and on, the user is encouraged to try to correct the interference by one of the following measures:

- . Reorient or relocate the receiving antenna.
- . Increase the separation between the equipment and receiver.
- . Connect the equipment into an outlet on a circuit different from that to which the receiver is connected.
- . Consult the dealer or an experienced radio/TV technician for help.

FCC Caution: To assure continued compliance, any changes or modifications not expressly approved by the party responsible for compliance could void the user's authority to operate this equipment. (Example - use only shielded interface cables when connecting to computer or peripheral devices).

FCC Radiation Exposure Statement

This equipment complies with FCC RF radiation exposure limits set forth for an uncontrolled environment. This equipment should be installed and operated with a minimum distance of 0.5 centimeters (.20 of an Inch) between the radiator and your body.

This transmitter must not be co-located or operating in conjunction with any other antenna or transmitter.

The antennas used for this transmitter must be installed to provide a separation distance of at least 0.5 centimeters (.20 of an Inch) from all persons and must not be co-located or operating in conjunction with any other antenna or transmitter.

This device complies with two different Part 15 rules sections of the FCC. Operation is subject to the following two conditions:

- (1) This device may not cause harmful interference, and
- (2) This device must accept any interference received, including interference that may cause undesired operation.

CE

EU Regulatory Conformance Hereby, Optoma Corporation declares that this device is in compliance with the essential requirements and other relevant provisions of Directive 2014/53/EU.

Notice: Observe the national local regulations in the location where the device is to be used.

Specification

Connection type	Bluetooth 2.4Ghz
Bluetooth type	V4.2
Bluetooth profile	HSP v1.2, HFP v1.6, A2DP v1.3, AVRCP v1.6 ,
Codec	SBC, AAC
Driver Type	Dynamic
Driver size	5.6mm, Graphene diaphragm
Impedance	16 Ohm
Battery life (estimated)	Up to 4 hours (for the earpieces) Lithium-ion battery, Typical 3.7V/
Battery type	(Earpieces) 55mAh, (Charging case) 500mAh
Microphone sensitivity	-42 +/-3 dB
Frequency response	20Hz - 20kHz
Sensitivity	95dB +/-3dB at 1KHz
Range	Up to 10m (33ft)
Weight	A pair of earphones (incl.CP350 tips) 12.6g, Charging case 56g

