

DGC 7860 AM

24" Combi-Steam Oven XXL

for steam cooking, baking, roasting with roast probe + menu cooking.



- Large touch display with proximity sensor – M Touch + MotionReact
- Perfect results – DualSteam technology
- Crispy on the outside, succulent on the inside – Combi-Steam
- Miele@home – network-enabled WiFi appliance + Miele Mix & Match
- Easy cleaning – PerfectClean stainless steel oven compartment

EAN: 4002516487692 / Material number: 11876980 / Old Material Number: 23786043USA

Construction type and design	
Combi-Steam Ovens	•
Combi-steam oven	•
PureLine	•
Appliance color	Clean Touch Steel
Convenience features	
Rapid PreHeat	•
Preheating	•
External steam generation	•
Climate sensor	•
Individual humidity settings in combination cooking	•
Menu cooking without transfer of taste	•
Miele Mix & Match	•
Roast probe	wired
Automatic programs with individual setting of the cooking result	•
Keep-warm function	•
Crisp function	•
Operating modes	
Defrost	•
MasterChef automatic programs	•
Country-specific automatic programs	•
Combi-Steam	•
Combi cooking	•
Combi-Steam with Convection Bake	•
Combi Steam with Convection Bake	•
Combi-Steam with Surround	•
Combi Steam with Surround	•
Combi-Steam with Maxi Broil	•
Combi Steam with Maxi Broil	•
Steam cooking	•
Sous-vide	•
Reheating	•
Roast with moisture	•
Broiling operating modes	•
Maxi Broil	•
Broil	•
Convection Bake	•
Convection Roast	•
Intensive	•
Intensive Bake	•
Humidity Plus	•
Cake plus	•
Surround	•
Browning	•
Bake	•
Convection Broil	•
Convection Roast	•
Warm-up cookware	•
Special Modes	•

DGC 7860 AM

24" Combi-Steam Oven XXL

for steam cooking, baking, roasting with roast probe + menu cooking.



EAN: 4002516487692 / Material number: 11876980 / Old Material Number: 23786043USA

Special modes

User convenience

Networking with Miele@home

Display

Clear text on control panel

MotionReact: Light comes on when movement is detected

MotionReact: Display comes on when movement is detected

MotionReact: Audible signal to acknowledge when movement is detected

MotionReact: Detection of cabinet fronts

SoftOpen

SoftClose

Multilingual

MyMiele

Show me how

Motorized lift-up control panel with SoftClose

Quantity-independent cooking

Steam cooking on up to 4 levels at the same time

Automatic menu cooking

Steam reduction before end of programme

Polyphonic acoustic signals

Time of day display

Date display

Minute minder

Programming start of cooking duration

Programming end of cooking duration

Programmable cooking time

Actual temperature display

Desired temperature display

Audible signal when desired temperature is reached

Default temperature

Favorites

Sabbath program

Individual settings

Cleaning convenience

Clean Touch Steel surface

Stainless steel oven compartment with linen-weave pattern and PerfectClean finish

Stainless-steel cavity with linen surface structure

Foldable broil heater element

External steam generator

Floor heater element for condensate reduction

Maintenance programs

Soak program

Rinse program

Cavity drying program

Quick-release side racks

Removable side racks

Descaling

CleanGlass door

DGC 7860 AM

24" Combi-Steam Oven XXL

for steam cooking, baking, roasting with roast probe + menu cooking.

EAN: 4002516487692 / Material number: 11876980 / Old Material Number: 23786043USA

Steam technology/water supply	
DualSteam	•
MultiSteam	•
Fresh water container volume in l	1.4
Fresh-water container tank behind motorized lift-up control panel with SoftClose	•
Condensate container behind motorized lift-up control panel with SoftClose	•
Drain filter	•
Safety	
Cooling system with cool touch front	•
Appliance cooling system and cool touch front	•
Safety shut-off	•
Safety cut-out	•
System lock	•
Vapor cooling system	•
Sensor lock	•
Technical data	
No. of rack levels	4
Labeling of rack levels	•
Door hinge side	Bottom
Oven interior lighting	BrilliantLight
Oven mode temperatures in °F (°C)	85-575 °F (30-300 °C)
Niche width min. in inches (mm)	22 1/8 (560)
Niche width min. in inches (mm)	560
Niche width max. in inches (mm)	22 3/8 (568)
Niche width max. in inches (mm)	568
Niche height min. in inches (mm)	23 1/4 (590)
Niche height min. in inches (mm)	590
Niche height max. in inches (mm)	23 1/2 (595)
Niche height max. in inches (mm)	595
Niche depth in in. (mm)	555
Niche depth in in. (mm)	21 7/8 (555)
Appliance dimensions (W x H x D) in inches (mm)	23 1/2 (595) x 23 1/2 (596) x 22 3/8 (567)
Appliance dimensions (W x H x D) in inches (mm)	
Appliance width in in. (mm)	23 1/2 (595)
Appliance width in in. (mm)	595
Appliance width in in. (mm)	23 1/2 (595)
Appliance height in in. (mm)	23 1/2 (596)
Appliance height in in. (mm)	596
Appliance height in in. (mm)	23 1/2 (596)
Appliance depth in in. (mm)	22 3/8 (567)
Appliance depth in in. (mm)	567
Appliance depth in in. (mm)	22 3/8 (567)
Weight in lbs. (kg)	104 (47.1)
Weight in lbs. (kg)	103.84 (47.1)
Weight in lbs. (kg)	104 (47.1)
Total connected load in kW	2.80-3.70
Power Rating in V	0
Usable voltage range in V	240/208

DGC 7860 AM

24" Combi-Steam Oven XXL

for steam cooking, baking, roasting with roast probe + menu cooking.



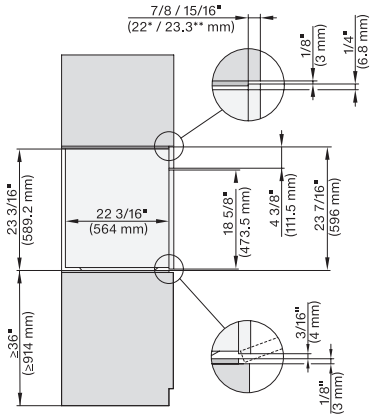
EAN: 4002516487692 / Material number: 11876980 / Old Material Number: 23786043USA

Frequency in Hz	60
Fuse rating in A	20
Number of phases	2
Connection wire with plug	•
Length of power cord in in. (m)	2
Replacing bulbs	Customer Service
Standard accessories	
PerfectClean universal baking tray	1
PerfectClean baking and roasting rack	1
FlexiClip telescopic runners with PerfectClean (pair)	1
Removable side racks with PerfectClean (pair)	1
Perforated stainless-steel cooking container	2
Unperforated stainless-steel cooking containers	1
Descaling tablets	2
Available display languages	

Available display languages via MultiLingua

bahasa malaysia, dansk,
deutsch, english, español,
français, hrvatski, italiano,
magyar, nederlands,
norsk, polski, português,
русский, română,
slovenčina, slovenščina,
srpski, suomi, svenska,
türkçe, українська, čeština,
ελληνικά, , , ,
,

for steam cooking, baking, roasting with roast probe + menu cooking.

[illegible]

Technical drawing of a mechanical assembly with dimensions in inches and millimeters. The drawing includes a side view and three circular cross-sectional views. Dimensions are as follows:

- Top Section:**
 - Overall width: $23/8$ / $15/16''$ ($22''$ / $23.31''$ mm)
 - Top flange thickness: $1/8''$ (3 mm)
 - Top flange width: $6/32''$ (6.3 mm)
- Second Section:**
 - Overall width: $22 5/16''$ (567 mm)
 - Internal width: $48 5/8''$ (473.5 mm)
 - Internal width: $4 3/8''$ (11.5 mm)
- Third Section:**
 - Overall width: $21 5/8''$ (549.1 mm)
 - Internal width: $40 1/8''$ (333 mm)
 - Internal width: $4 3/8''$ (11.5 mm)
- Bottom Section:**
 - Overall width: $17 15/16''$ (455.5 mm)
 - Bottom flange thickness: $3/16''$ (4 mm)
 - Bottom flange width: $7/16''$ (10.9 mm)
- Other Dimensions:**
 - Left side height: $17 1/2''$ (444.7 mm)
 - Right side height: $23 7/8''$ (598.2 mm)

Technical drawing of a mechanical assembly with dimensions in inches and millimeters. The drawing includes a side view and three circular detail views. Dimensions are as follows:

- Top Section:**
 - Overall width: $7/8" / 15/16"$ (22.7 / 23.3 mm)
 - Radius: $R1/2"$ (6.8 mm)
 - Internal width: $22 5/16"$ (567 mm)
- Left Section:**
 - Height: $17 1/2"$ (444.7 mm)
 - Width: $23 3/16"$ (588.2 mm)
- Right Section:**
 - Height: $23 7/16"$ (596 mm)
 - Width: $17 15/16"$ (455.5 mm)
- Internal Features:**
 - Internal width: $21 5/8"$ (549.1 mm)
 - Internal height: $48 5/8"$ (473.5 mm)
 - Internal width: $4 3/8"$ (111.5 mm)
 - Internal height: $13 1/8"$ (330 mm)
 - Internal width: $4 3/8"$ (111.5 mm)
 - Internal height: $17 15/16"$ (455.5 mm)
- Detail Views:**
 - Top detail: Shows a hole with diameter $3/16"$ (4.8 mm) and a distance of $1/8"$ (3 mm) from the edge.
 - Bottom detail: Shows a hole with diameter $3/16"$ (4.8 mm) and a distance of $5/16"$ (7.9 mm) from the edge.
 - Right detail: Shows a hole with diameter $3/16"$ (4.8 mm) and a distance of $1/8"$ (3 mm) from the edge.

Technical drawing of a mechanical part with dimensions in inches and millimeters. The part is a rectangular block with a central slot and a circular feature on the right. Dimensions include overall width (23.3165 inches / 589.2 mm), slot width (22.516 inches / 567 mm), and various radii and offsets (e.g., 7/8 inch / 15/16 inch, 1/4 inch / 6.3 mm).

Technical drawing of the 'KLEIN' cabinet. The front view shows a three-door cabinet with a central open compartment. Dimensions include a total width of 64" (1626 mm) and a depth of 23 1/4" (590 mm). The side view shows a depth of 23 1/8" (582 mm). A detail view of the door shows a height of 23 7/16" (595 mm) and a depth of 23 7/16" (595 mm).

Technical drawing of a rectangular box with dimensions in inches and millimeters:

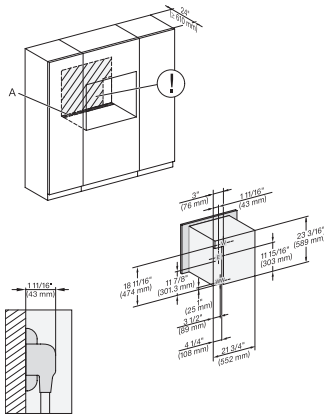
- Top edge: 24" (609 mm)
- Right edge: 23 1/4" (590 mm)
- Bottom edge: 22 1/8" (562 mm)
- Bottom-left edge: 23 7/16" (596 mm)
- Bottom-right edge: 23 7/16" (596 mm)

installation Proud wide front 650S, installation drawing, NA

DGC 7860 AM

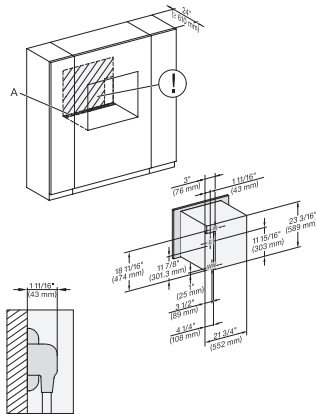
24" Combi-Steam Oven XXL

for steam cooking, baking, roasting with roast probe + menu cooking.



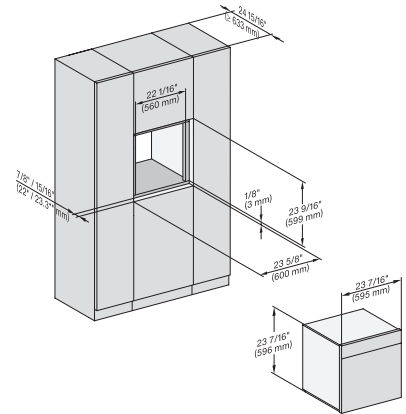
installation 30 inch Proud DGC XXL, installation drawing, NA

A – Cut-out (1 9/16" x 19 11/16" / 40 mm x 500 mm) in the bottom of the cabinet for power cord and ventilation, – Electrical and water supplies are recommended to be placed in adjacent cabinetry. Additional cabinet depth is required when placing the electrical and water supplies behind the appliance., E = Electric connection



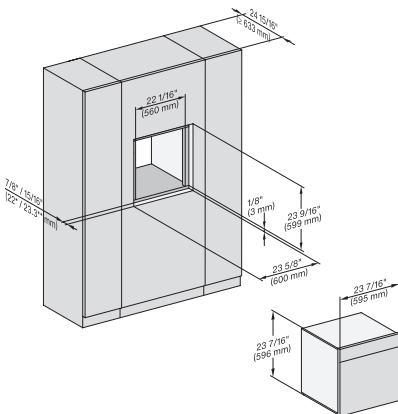
installation 30 inch wide front DGC XXL, installation drawing, NA

A – Cut-out (1 9/16" x 19 11/16" / 40 mm x 500 mm) in the bottom of the cabinet for power cord and ventilation, – Electrical and water supplies are recommended to be placed in adjacent cabinetry. Additional cabinet depth is required when placing the electrical and water supplies behind the appliance., E = Electric connection



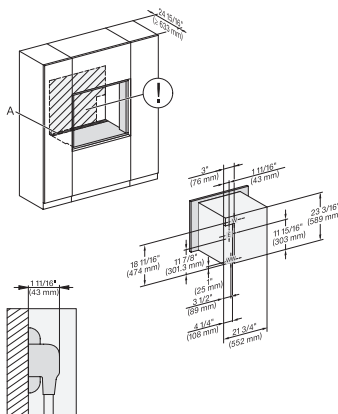
installation Flush inset 650S, installation drawing, NA

7/8" – 22" mm – Glass, 15/16" – 23.3** mm – Stainless steel



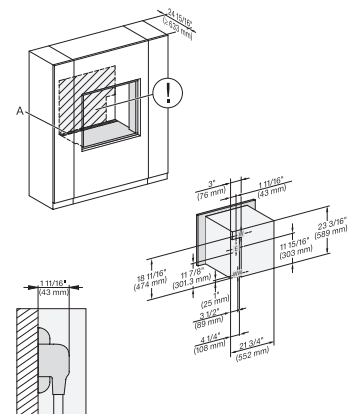
installation Flush inset breite Front 650S, installation drawing, NA

7/8" – 22" mm – Glass, 15/16" – 23.3** mm – Stainless steel



Installation 30 inch Flush inset DGC XXL, installation drawing, NA

A – Cut-out (1 9/16" x 19 11/16" / 40 mm x 500 mm) in the bottom of the cabinet for power cord and ventilation, – Electrical and water supplies are recommended to be placed in adjacent cabinetry. Additional cabinet depth is required when placing the electrical and water supplies behind the appliance., E = Electric connection



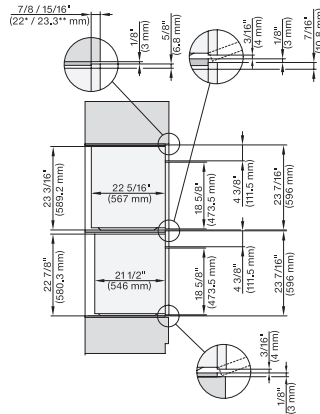
installation 30 inch Flush inset wide front DGC XXL, installation drawing, NA

A – Cut-out (1 9/16" x 19 11/16" / 40 mm x 500 mm) in the bottom of the cabinet for power cord and ventilation, – Electrical and water supplies are recommended to be placed in adjacent cabinetry. Additional cabinet depth is required when placing the electrical and water supplies behind the appliance., E = Electric connection

DGC 7860 AM

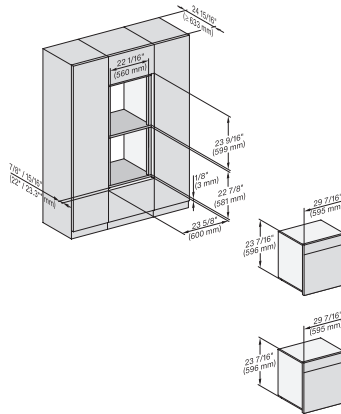
24" Combi-Steam Oven XXL

for steam cooking, baking, roasting with roast probe + menu cooking.



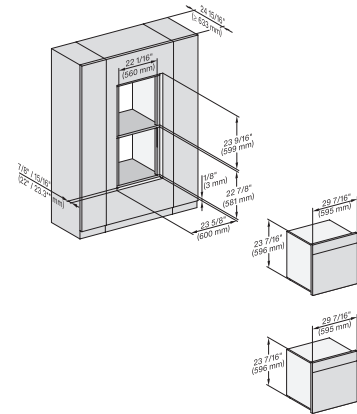
DGC786x(+EBA7848), H7x6xBP(+EBA7848), side view, 30 Zoll, Flush inset, combi, XXL, 650S

7/8" – 22" mm – Glass, 15/16" – 23.3** mm – Stainless steel



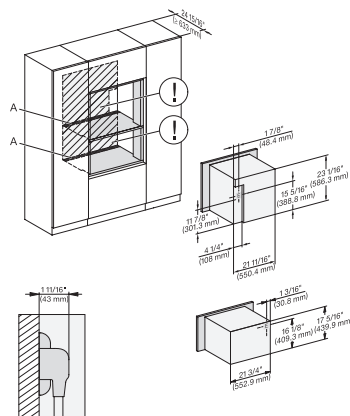
DGC786x, H7x6xBP, Einbau, 30 Zoll, Flush inset, combi, XXL 650S

7/8" – 22" mm – Glass, 15/16" – 23.3** mm – Stainless steel



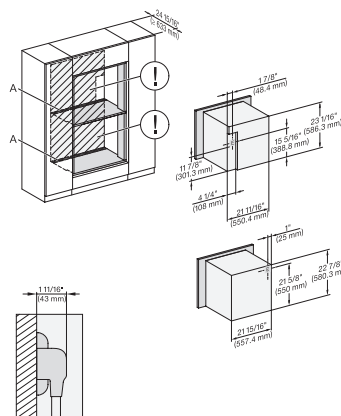
DGC786x, H7x6xBP, Einbau , 30 Zoll, Flush inset, combi, wide front, XXL, 650S

7/8" – 22" mm – Glass, 15/16" – 23.3** mm – Stainless steel



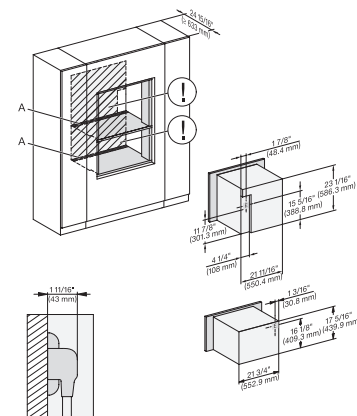
DGC786x(+EBA7848), H7x40BM(+EBA7848), Installation, 30 Zoll, Flush inset, combi, XXL, 450S

A – Cut-out (4" x 28" / 100 mm x 720 mm) in the bottom of the cabinet for power cord and ventilation. – Electrical and water supplies are recommended to be placed in adjacent cabinetry., Additional cabinet depth is required when placing the electrical and water supplies behind the appliance., E = Electric connection



DGC786x+EBA7868, H7x6xBP(+EBA7848), Installation, 30 Zoll, Flush inset, combi, XXL, 650S

A – Cut-out (4" x 28" / 100 mm x 720 mm) in the bottom of the cabinet for power cord and ventilation. – Electrical and water supplies are recommended to be placed in adjacent cabinetry., Additional cabinet depth is required when placing the electrical and water supplies behind the appliance., E = Electric connection



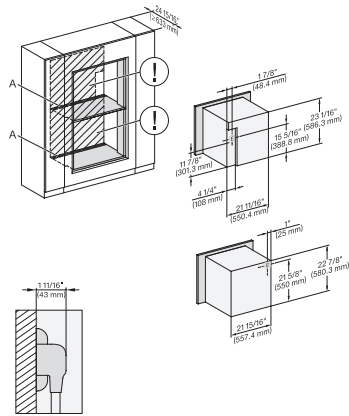
DGC786x+EBA7868, H7x40BM(+EBA7848), Installation, 30 Zoll, Flush inset, combi, wide front, XXL, 450S

A – Cut-out (4" x 28" / 100 mm x 720 mm) in the bottom of the cabinet for power cord and ventilation. – Electrical and water supplies are recommended to be placed in adjacent cabinetry., Additional cabinet depth is required when placing the electrical and water supplies behind the appliance., E = Electric connection

DGC 7860 AM

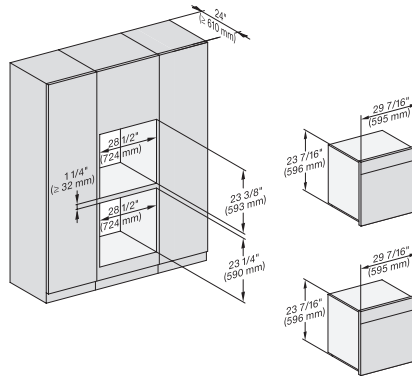
24" Combi-Steam Oven XXL

for steam cooking, baking, roasting with roast probe + menu cooking.



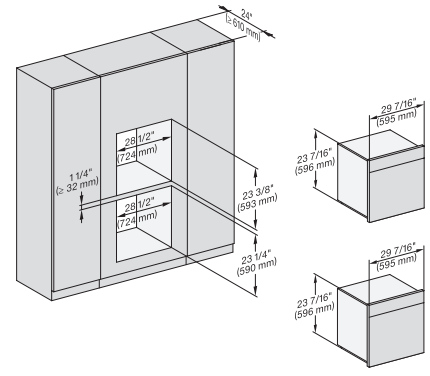
DGC786x(+EBA7848), H7x6xBP(+EBA7848), Installation, 30 Zoll, Flush inset, combi, wide front, 650S, XXL

A – Cut-out (4" x 28" / 100 mm x 720 mm) in the bottom of the cabinet for power cord and ventilation. – Electrical and water supplies are recommended to be placed in adjacent cabinetry. Additional cabinet depth is required when placing the electrical and water supplies behind the appliance. E = Electric connection

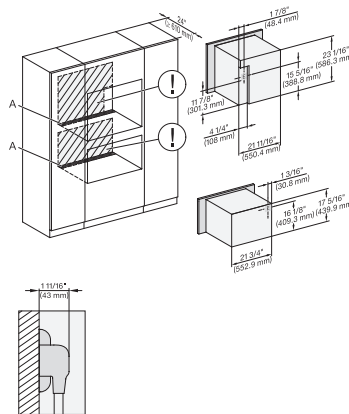


DGC786x, H7xxBP, Einbau, 30 Zoll, Proud, combi, XXL, 650S

7/8" – 22" mm – Glass, 15/16" – 23.3" mm – Stainless steel

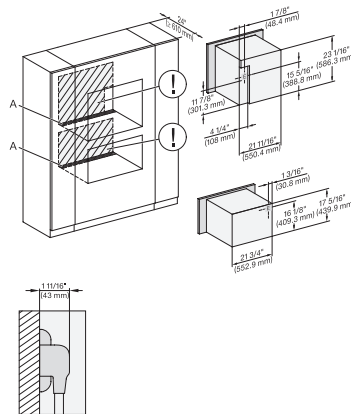


DGC786x, H7x6xBP, Einbau, 30 Zoll, Proud, combi, wide front, XXL



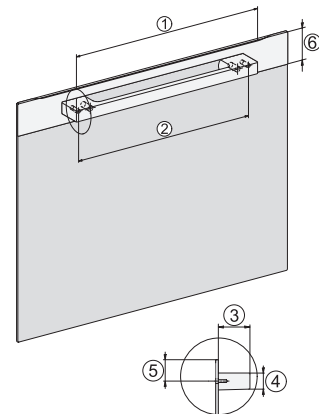
DGC786x(+EBA7848), H7x40BM(+EBA7848), Installation, 30 Zoll, Proud, combi, XXL, 450S

A – Cut-out (4" x 28" / 100 mm x 720 mm) in the bottom of the cabinet for power cord and ventilation. – Electrical and water supplies are recommended to be placed in adjacent cabinetry. Additional cabinet depth is required when placing the electrical and water supplies behind the appliance. E = Electric connection



DGC786x(+EBA7848), H7x40BM(+EBA7848), Installation, 30 Zoll, Proud, combi, wide front, XXL, 450S

A – Cut-out (4" x 28" / 100 mm x 720 mm) in the bottom of the cabinet for power cord and ventilation. – Electrical and water supplies are recommended to be placed in adjacent cabinetry. Additional cabinet depth is required when placing the electrical and water supplies behind the appliance. E = Electric connection



Handle DGC74xx, DGC76xx, DGC78xx, PureLine – NA7000 - Installation drawing

DGC7470, DGC7670, DGC7870, DGC7875, DGC7880, DGC7885, 19 11/16" / 500 mm, 17 1/2" / 444 mm, 1 7/8" / 47 mm, 15/16" / 24 mm, 1 1/4" / 32,5 mm, 2 9/16" / 65 mm, , DGC7440, DGC7640, DGC7840, DGC7845, DGC7860, DGC7865, 15 3/4" / 400 mm, 14 3/16" / 360 mm, 1 7/8" / 47 mm, 15/16" / 24 mm, 1 1/4" / 32,5 mm, 2 9/16" / 65 mm