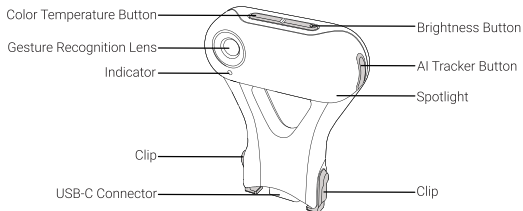


## Specifications

Dimensions	57.4 x 46 x 15.8mm (2.3 x 1.8 x 0.6in)
Weight	14g (±0.5g) / 0.49oz (±0.02oz)
Power Consumption	1.6W
Power Input	5V = 320mA
Color Temperature Options	Cool (5000K), Warm (2900K), Mixed (3500K)
Illumination	10 - 80Lux (0.6m distance from subject)
Operating Temperature	14°F to 104°F (-10°C to 40°C)

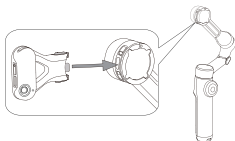
## Part Names



# How to Use

## 1 Installation and Removal

1. Connect your gimbal to your phone via Bluetooth. Align the notch on the gimbal's tilt axis with the USB port and insert the AI Tracker.



2. Position the AI Tracker facing forward for front camera use and backward for rear camera use.

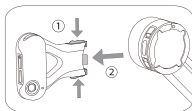


Front camera use



Rear camera use

3. To remove the AI Tracker, press the clips on both sides and detach it by gently pulling it away from the gimbal.



## Notes:

- Before using the AI Tracker for the first time, upgrade the Insta360 App to the latest version. If an update is available, follow the on-screen instructions to install it.

- Ensure the AI Tracker is properly aligned and the clips are securely attached before using it.
- While in use, keep your gimbal connected to your phone via Bluetooth.
- The AI Tracker is powered by the gimbal. If the gimbal is powered off or out of battery, the AI Tracker will not work.

## 2 Tracking Instructions

1. Press the AI Tracker Button to turn it on or off.
2. Use the AI Tracker to track people or animals (cats and dogs) through hand gestures or the Trigger Button on your gimbal.



**Palm gesture:**  
Start/stop tracking.



**Peace gesture:**  
Start/stop recording video.  
Start/stop taking photos.



**Trigger Button:**  
Single Press: Start/stop tracking  
or wake the AI Tracker.

Double Press: Stop tracking and  
recenter the gimbal.

Triple Press: Stop tracking and switch  
the phone between forward-facing and  
backward-facing.




**Joystick:**  
Adjust the central point  
of tracking by moving the  
joystick up, down, left, or  
right.

### Notes:

- If the Trigger Button is not pressed or tracking is not activated within 5 minutes\* after connecting the AI Tracker to the gimbal, it will enter standby mode.
- To wake the AI Tracker, press the Trigger Button on the gimbal or any button on the AI Tracker. If awakened via the Trigger Button, the AI Tracker will start tracking immediately.
- After pressing the gimbal's Trigger Button, the AI Tracker will automatically select and

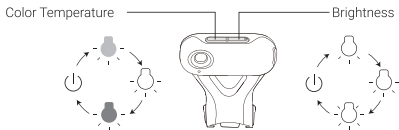
track a subject in the center of the frame. In scenes with multiple people, gesture control is recommended for selecting a subject. In scenes with multiple pets, move closer to the target pet and use the Trigger Button for best results.

- For gesture control, adults should face the Gesture Recognition Lens and perform gestures at a distance of 1.6 to 16ft (0.5 to 5 meters). For children, the recommended distance is 1.6 to 6.5ft (0.5 to 2 meters).
- The AI Tracker supports tracking in the native camera app and third-party apps. The tracking function of the AI Tracker cannot work when you track on the shooting page inside the Insta360 App, though the spotlight function will still work.

\* If no action is taken within 5 minutes, the AI Tracker will enter standby mode. You can adjust this in the settings. To adjust the standby timeout, make sure the gimbal and AI Tracker are powered on and connected to the Insta360 App. Open the App and go to  **Settings > Device Settings > AI Tracker Management > Standby Timeout**.

### 3 Spotlight Instructions

1. Long press the Color Temperature Button or Brightness Button to turn the spotlight on or off.
2. Press the Color Temperature Button to cycle through cool, warm, and mixed color temperatures. Press the Brightness Button to adjust the brightness to high, medium, or low.



### Notes

- The AI Tracker is not waterproof. Do not immerse it in water or expose it to moisture.
- Do not hit, crush, or throw the AI Tracker.

- Avoid using the AI Tracker during high-intensity activities to prevent it from falling.
- Avoid direct skin contact with the USB-C Connector after prolonged use.
- Clean the AI Tracker with a soft, dry cloth. Avoid using cleaning liquids.

## Indicator Status

AI Tracker Status	Indicator Status
Clips not fully inserted / clips loose	Flashes red
Power on / Stop tracking	Solid red
Tracking	Solid green
Tracking failed	Flashes green
Start/stop recording video Start taking photos	Spotlight flashes three times
Entering standby mode	Flashes yellow
Start tracking after exiting standby mode	Flashes yellow, then red before turning solid green
Firmware updating	Flashes red and green alternately

## Disclaimer

Please read this Disclaimer carefully. Using this product means that you acknowledge and accept the terms of this disclaimer. By using this product, you hereby acknowledge and

agree that you are solely responsible for your own conduct when using this product and any consequences thereof. You agree to use this product only for proper and lawful purposes. You understand and agree that Arashi Vision Inc. (hereinafter referred to as 'Insta360') accepts no liability for any and all misuse, consequences, damages, injuries, penalties, or any other legal responsibility directly or indirectly incurred by your using this product and associated accessories. Before every use, make sure that your accessories are functioning properly. If there's any damage or irregularity, stop using them immediately. Within the scope of state laws and regulations, Insta360 reserves the right of final explanation and revision for the commitment.

## **After-Sales Service**

The warranty period of the attached product is 1 year from the original retail purchase. Warranty service may vary according to the applicable laws of your state or jurisdiction. For detailed warranty policies, please visit [\*\*https://insta360.com/support\*\*](https://insta360.com/support).