

QUICK SETUP GUIDE

# Color Changing Computer Speakers with Bluetooth

NS-2810BT / NS-2810BT-C

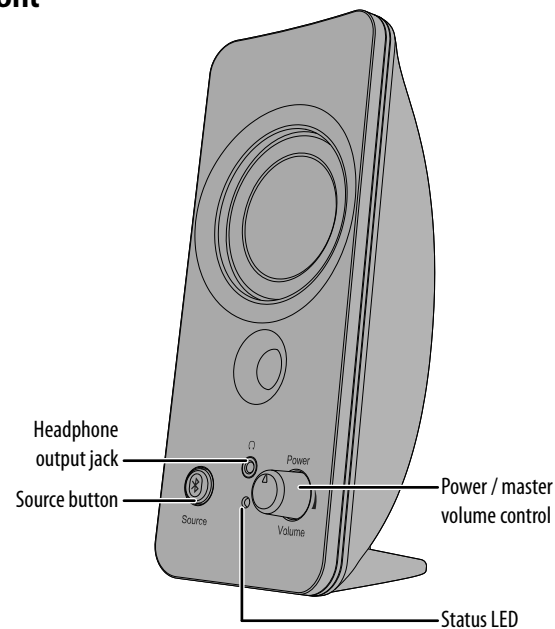
PACKAGE CONTENTS

- Stereo speakers (2)
- AC adapter (100 - 240V)
- 5 ft. (1.52 m) 3.5 mm to 3.5 mm audio cable
- Quick Setup Guide

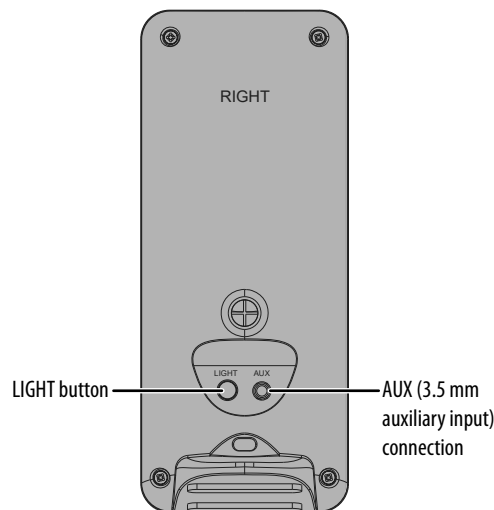
FEATURES

- Eight color modes (blue, green, red, purple, yellow, light blue, repeating six colors, and off) help set the mood
- 5W RMS (2.5W per channel) produces quality sound
- Bluetooth connectivity wirelessly streams audio from your Bluetooth-enabled devices
- 3.5 mm input jack lets you connect to other external sound sources
- Headphone jack provides an easy connection option for private listening

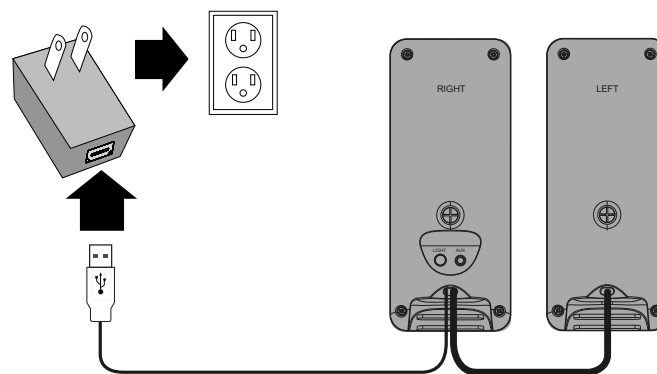
Front



Back



CONNECTING POWER



- Plug your speaker's USB cable into the AC adapter, then plug the adapter into a power outlet.

TURNING YOUR SPEAKERS ON AND OFF

- Rotate the knob clockwise to turn on your speakers and adjust the volume. Rotate counter-clockwise to turn off your speakers.

CONNECTING WITH BLUETOOTH

- 1 Make sure that your Bluetooth device is turned on and within 33 ft. (10 m) of your speakers.
- 2 Turn on your speakers. The status LED blinks blue to indicate that they are in pairing mode. If the status LED is red, press the **Source** button once to switch to Bluetooth mode.
- 3 Turn on your Bluetooth device, then turn on Bluetooth. Set your device to pairing mode, then select **Insignia NS-2810BT**. See the instructions that came with your Bluetooth device for information about pairing.
- 4 If you are asked for a password, enter **0000**. When pairing is complete, the LED lights solid blue.

STATUS LED

STATUS LED	DESCRIPTION
Blinks blue	Speakers are in pairing mode
Solid blue	Speakers are paired
Solid red	AUX mode

RECONNECTING WITH A PREVIOUS DEVICE

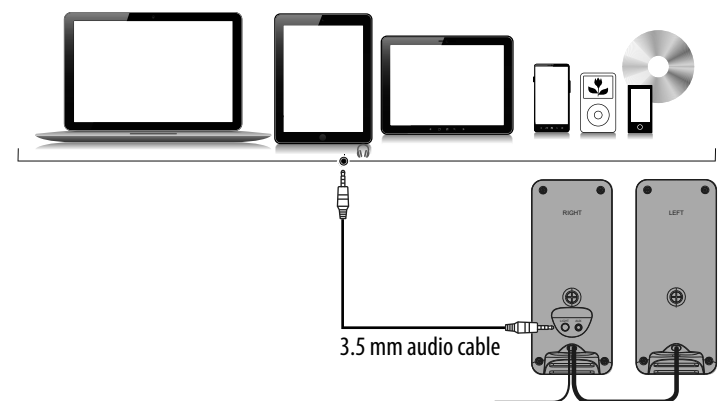
- Make sure that the last paired Bluetooth device is near your speakers.
- When your speakers are on, they automatically search for and try to connect to the last paired device.

FORCE PAIRING AND CONNECTING WITH A NEW DEVICE

- If you have paired your speakers to a device and want to pair with a different device, press and hold the **Source** button for three seconds until the blue LED begins blinking. Search your new device's Bluetooth list for **Insignia NS-2810BT**, then tap to pair and connect.

USING A WIRED CONNECTION

- 1 Connect an external sound source, such as an MP3 player, by plugging the included audio cable into the **AUX** jack on the back of the control speaker and the sound source.



- 2 Press the **Source** button to enter AUX mode. The status LED lights red.

## LISTENING TO MUSIC

- 1 Turn on your speakers, then connect to your device.
- 2 Press the **Source** button to select a Bluetooth or wired (AUX) connection. The status LED lights blue for Bluetooth or red for AUX.
- 3 Begin playback on your source device.
- 4 Turn the **Volume** control to adjust the volume.

## LIGHT COLOR PATTERN

- Press the **LIGHT** button repeatedly to select a color for the LED lighting. The color options cycle as follows: Blue -> Green -> Red -> Purple -> Yellow -> Light blue -> Repeating six colors -> Lights off
- Press and hold the **LIGHT** button for three seconds to dim the LED lighting by 50%.
- Press the button again for three seconds to return the lighting to full brightness.

## TROUBLESHOOTING

PROBLEM	SOLUTION
<b>No power</b>	<ul style="list-style-type: none"> <li>• Make sure that your speakers are plugged in.</li> <li>• Make sure that your speakers are turned on.</li> </ul>
<b>No sound or low volume</b>	<ul style="list-style-type: none"> <li>• Make sure that your Bluetooth device is turned on, Bluetooth is turned on, and <b>Insignia NS-2810BT</b> is selected.</li> <li>• Turn up the volume on your speakers.</li> <li>• Turn up the volume on your Bluetooth device.</li> <li>• Make sure that your Bluetooth device is not muted.</li> <li>• Make sure that your speakers are not paired to another Bluetooth device.</li> <li>• Make sure that your Bluetooth device is not paired to another Bluetooth device.</li> </ul>
<b>Cannot establish Bluetooth connection</b>	<ul style="list-style-type: none"> <li>• Shorten the distance between your speakers and your Bluetooth device.</li> <li>• Turn your devices off, then on. Re-pair your speakers and your Bluetooth device.</li> <li>• Make sure that your speakers are not paired to another Bluetooth device.</li> <li>• Make sure that your speakers and Bluetooth device are both in pairing mode.</li> <li>• Make sure that your Bluetooth device supports Bluetooth v4.0 and below.</li> <li>• Make sure that your Bluetooth device is not connected to any other device.</li> <li>• Make sure that you have selected <b>Insignia NS-2810BT</b> on your Bluetooth device.</li> <li>• If a passcode is needed, enter <b>0000</b>.</li> </ul>
<b>My Bluetooth device keeps unpairing</b>	<ul style="list-style-type: none"> <li>• Shorten the distance between your speakers and your Bluetooth device.</li> <li>• If the battery on your Bluetooth device is low, recharge the battery.</li> </ul>
<b>“Insignia NS-2810BT” does not appear on my Bluetooth device</b>	<ul style="list-style-type: none"> <li>• Shorten the distance between your speakers and your Bluetooth device.</li> <li>• Put your speakers into pairing mode, then refresh your list of Bluetooth devices. For more information, see the documentation that came with your Bluetooth device.</li> </ul>

PROBLEM	SOLUTION
<b>Sound is distorted</b>	<ul style="list-style-type: none"> <li>• Adjust the master volume control to the ¼ or ½ level.</li> <li>• Adjust volume settings on the output device (computer or portable audio source).</li> <li>• Make sure that all connections are correct and secure.</li> </ul>
<b>Sound is coming from one speaker</b>	<ul style="list-style-type: none"> <li>• If your speaker system is connected to a computer, adjust your computer's audio levels to balance the sound coming from the speakers.</li> <li>• Make sure that all connections are correct and secure.</li> </ul>
<b>Can my speakers connect to a TV, monitor, soundbar, DVD player?</b>	Yes, if the device has a Bluetooth or an AUX connection.
<b>Can my speakers be connected to more than one device (3.5mm and Bluetooth)?</b>	Yes. Make sure that you select the correct source by pressing the <b>Source</b> button.
<b>Do my speakers work with smart home devices?</b>	Yes, your speakers work with any Bluetooth device.

## SPECIFICATIONS

**Dimensions (H×W×D):** 8 × 6.5 × 3.5 in.  
(203.2 × 165.1 × 88.9 mm)

**Wattage:** 5W RMS total, 2.5W each speaker

**Range:** 32.8 ft (10 m)

**Power cord length:** 5.5 ft (1.67 m)

## SAFETY INSTRUCTIONS

- 1 Read, follow, and save all instructions and documentation.
- 2 Do not use this apparatus near water.
- 3 Clean only with a dry cloth.
- 4 Do not block any ventilation openings. Install in accordance with the manufacturer's instructions.
- 5 Do not install near any heat sources such as radiators, heat registers, stoves, or other apparatus (including amplifiers) that produce heat.
- 6 Do not defeat the safety purpose of the polarized or grounding-type plug. A polarized plug has two blades with one wider than the other. A grounding type plug has two blades and a third grounding prong. The wide blade or the third prong are provided for your safety. If the provided plug does not fit into your outlet, consult an electrician for replacement of the obsolete outlet.
- 7 Protect the power cord from being walked on or pinched particularly at plugs, convenience receptacles, and the point where they exit from the apparatus.
- 8 Only use attachments/accessories specified by the manufacturer.
- 9 Use only with the cart, stand, tripod, bracket, or table specified by the manufacturer, or sold with the apparatus. When a cart is used, use caution when moving the cart/apparatus combination to avoid injury from tip-over.
- 10 Unplug this apparatus during lightning storms or when unused for long periods of time.
- 11 Refer all servicing to qualified service personnel. Servicing is required when the apparatus has been damaged in any way, such as power-supply cord or plug is damaged, liquid has been spilled or objects have fallen into the apparatus, the apparatus has been exposed to rain or moisture, does not operate normally, or has been dropped.
- 12 Keep the unit in a well-ventilated environment. Do not install this equipment in a confined space such as a bookcase.
- 13 **WARNING:** To reduce the risk of fire or electric shock, do not expose this device to rain, moisture, dripping, or splashing, and no objects filled with liquids, such as vases, shall be placed on it.
- 14 **WARNING:** The wall plug is the disconnecting device. The plug must remain readily operable.
- 15 The apparatus is classified as a class II apparatus.

**WARNING:** To reduce the risk of fire or electric shock, do not expose this appliance to rain or moisture.



**CAUTION:** Use of controls or adjustments or performance of procedures other than those specified may result in hazardous radiation or exposure.

**CAUTION:** TO REDUCE THE RISK OF ELECTRIC SHOCK, DO NOT REMOVE COVER (OR BACK). NO USER-SERVICING TO QUALIFIED SERVICE PERSONNEL.



The lightning flash with arrowhead symbol, within an equilateral triangle, is intended to alert the user to presence of uninsulated “dangerous voltage” within the product's enclosure that may be sufficient magnitude to constitute a risk of electric shock to persons.



The exclamation point within an equilateral triangle is intended to alert the user to the presence of important operating and maintenance (servicing) instructions in the literature accompanying the appliance.

## LEGAL NOTICES

This device complies with Part 15 of the FCC Rules. Operation is subject to the following two conditions: (1) this device may not cause harmful interference, and (2) this device must accept any interference received, including interference that may cause undesired operation.

### FCC Caution:

This device complies with Part 15 of the FCC Rules. Operation of this product is subject to the following two conditions: (1) this device may not cause harmful interference, and (2) this device must accept any interference received, including interference that may cause undesired operation.

This equipment has been tested and found to comply within the limits for a class B digital device, pursuant to Part 15 of the FCC Rules. These limits are designed to provide reasonable protection against harmful interference in a residential installation. This equipment generates, uses, and can radiate radio frequency energy and, if not installed and used in accordance with the instructions, may cause harmful interference to radio communications. However, there is no guarantee that interference will not occur in a particular installation. If this equipment does cause harmful interference to radio or television reception, which can be determined by turning the equipment off and on, the user is encouraged to try to correct the interference by one or more of the following measures:

- Reorient or relocate the receiving antenna.
- Increase the separation between the equipment and receiver.
- Connect the equipment into an outlet on a circuit different from that to which the receiver is connected.
- Consult the dealer or an experienced radio/TV technician for help.

### FCC warning

Changes or modifications not expressly approved by the party responsible for compliance with the FCC Rules could void the user's authority to operate this equipment.

The equipment complies with FCC Radiation exposure limits set forth for uncontrolled environment. This equipment should be installed and operated with minimum distance 20 cm between the radiator and your body.

### IC STATEMENT

This device complies with Innovation, Science and Economic Development Canada license-exempt RSS standard(s). Operation is subject to the following two conditions: (1) this device may not cause interference, and (2) this device must accept any interference, including interference that may cause undesired operation of the device.

The device is compliance with RF field strength limits, users can obtain Canadian information on RF exposure and compliance.

This Class B digital apparatus complies with Canadian ICES-003 (B)/NMB-003(B).

This equipment should be installed and operated with a minimum distance of 20 cm between the radiator and your body.

## ONE-YEAR LIMITED WARRANTY

Visit [www.insigniaproducts.com](http://www.insigniaproducts.com) for details.

### CONTACT INSIGNIA:

1-877-467-4289 (U.S. and Canada)

[www.insigniaproducts.com](http://www.insigniaproducts.com)

Amazon, Alexa and all related logos are trademarks of Amazon.com, Inc. or its affiliates.

INSIGNIA is a trademark of Best Buy and its affiliated companies  
Distributed by Best Buy Purchasing, LLC  
7601 Penn Ave South, Richfield, MN 55423 U.S.A.  
©2025 Best Buy. All rights reserved.