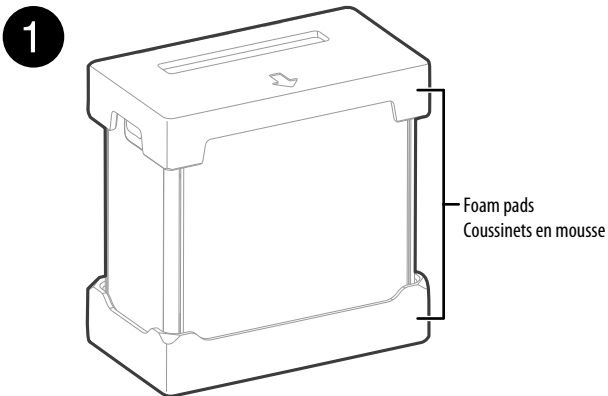


INSTALLATION GUIDE / GUIDE D'INSTALLATION RAPIDE

Dehumidifier Caster Wheels / Roulettes pivotantes de déshumidificateur

NS-DH35WH7 / NS-DH35WH7-C / NS-DH50WH7 / NS-DH50WH7-C

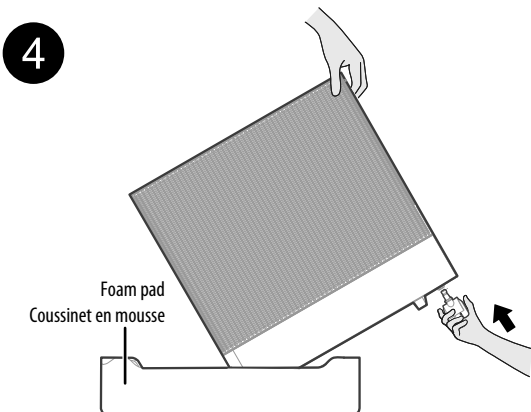


Note: Remove the four caster wheels from the packaging and assemble before setting up your dehumidifier.

Remove the foam pads and set one aside. You will use it in steps 4 and 5.

Remarque : Retirer les quatre roulettes de l'emballage et les assembler avant d'installer le déshumidificateur.

Retirer les coussinets en mousse et en mettre un de côté. Il sera utilisé aux étapes 4 et 5.



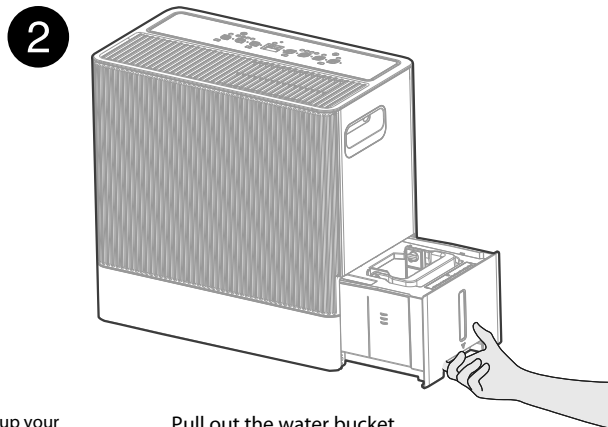
Tilt the unit on the foam pad and hold it with one hand, then insert two caster wheels.
⚠ WARNING: DO NOT tilt the unit more than 30° during installation. Do not keep the unit in a tilted position longer than five minutes.

Note: It is recommended to move the caster wheels side to side while inserting for a smoother fit.

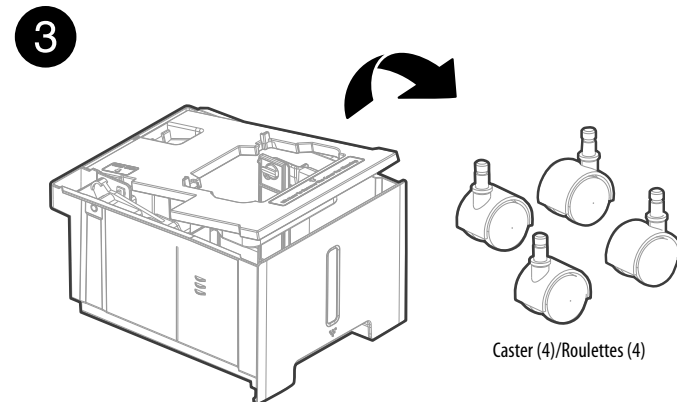
Incliner l'appareil sur le coussinet en mousse et le tenir d'une main, puis insérer deux roues pivotantes.

⚠ AVERTISSEMENT : NE PAS incliner l'appareil de plus de 30° pendant l'installation. Ne pas laisser l'appareil en position inclinée plus de cinq minutes.

Remarque : Il est recommandé de déplacer les roues pivotantes d'un côté à l'autre lors de l'insertion pour un meilleur ajustement.

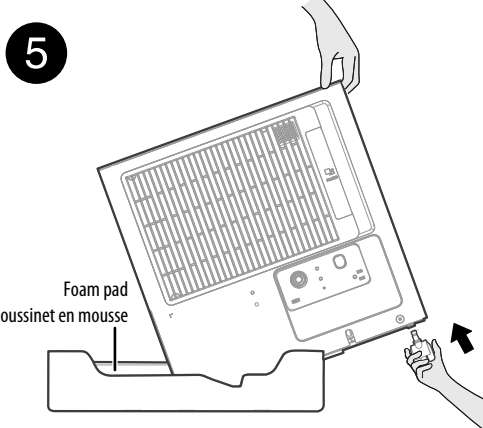


Pull out the water bucket.
Sortir le réservoir d'eau.

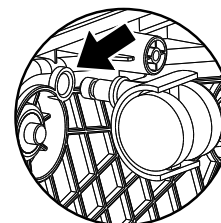


Remove the water bucket cover, take out the four caster wheels, then reinstall the water bucket.

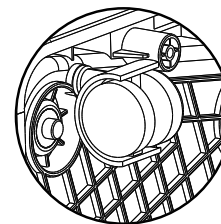
Retirer le couvercle du réservoir d'eau, retirer les quatre roues pivotantes, puis réinstaller le réservoir d'eau.



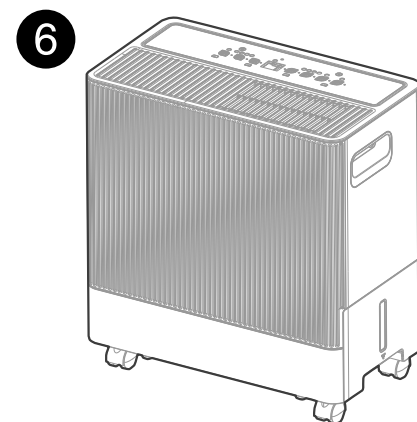
Rotate the unit to the other side, tilt and hold it with one hand, then insert the remaining two caster wheels.
Faire pivoter l'appareil de l'autre côté, l'incliner et le tenir d'une main, puis insérer les deux autres roues pivotantes.



Before inserting
Avant l'insertion



Correctly inserted
Correctement inséré



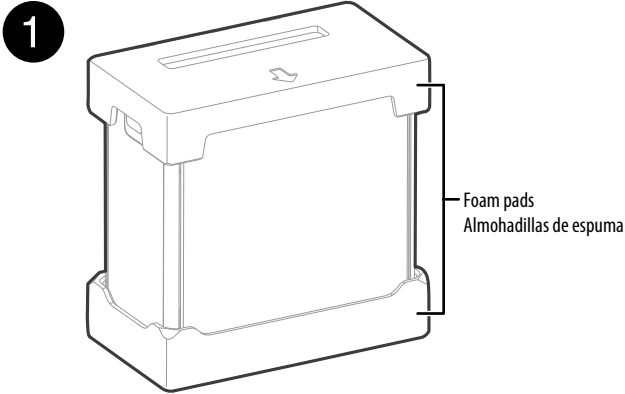
Leave in a vertical position for 30 minutes before use.

Laisser en position verticale pendant 30 minutes avant toute utilisation.

INSTALLATION GUIDE / GUÍA DE INSTALACIÓN RÁPIDA

Dehumidifier Caster Wheels / Ruedas giratorias de deshumidificador

NS-DH35WH7 / NS-DH35WH7-C / NS-DH50WH7 / NS-DH50WH7-C

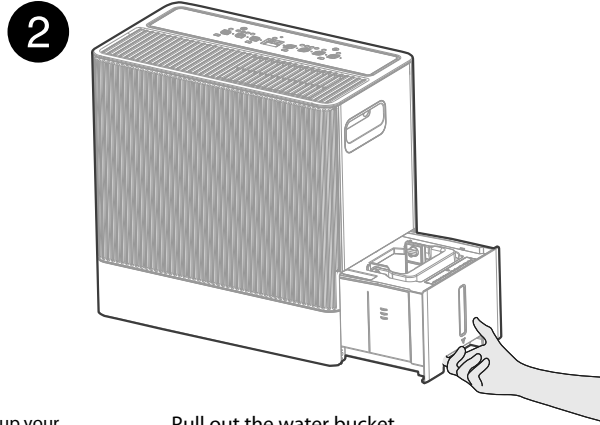


Note: Remove the four caster wheels from the packaging and assemble before setting up your dehumidifier.

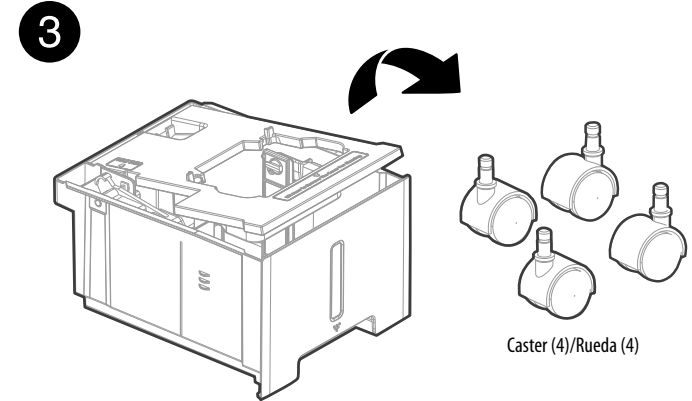
Remove the foam pads and set one aside. You will use it in steps 4 and 5.

Nota: Saque las cuatro ruedas giratorias del embalaje y móntelas antes de instalar el deshumidificador.

Retire las almohadillas de espuma y deje una a un lado. La utilizará en los pasos 4 y 5.

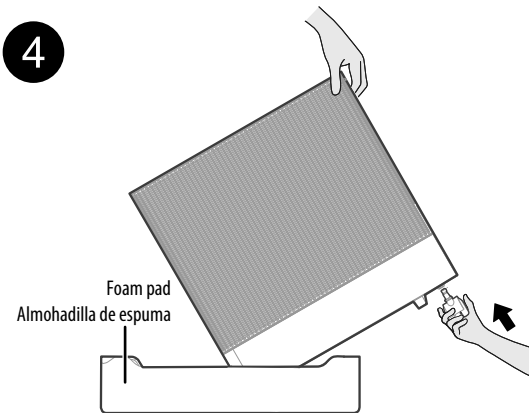


Pull out the water bucket.
Saque el recipiente de agua.



Remove the water bucket cover, take out the four caster wheels, then reinstall the water bucket.

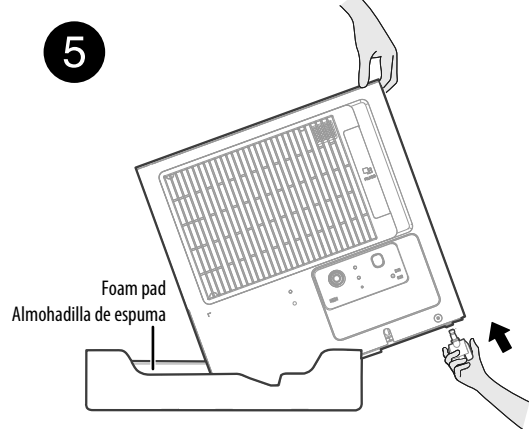
Retire la tapa del recipiente de agua, saque las cuatro ruedas giratorias y vuelva a instalar el recipiente de agua.



Tilt the unit on the foam pad and hold it with one hand, then insert two caster wheels.

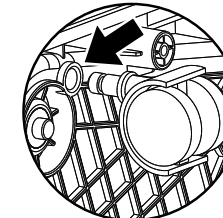
⚠ WARNING: DO NOT tilt the unit more than 30° during installation. Do not keep the unit in a tilted position longer than five minutes.

Nota: Se recomienda mover las ruedas de lado a lado mientras se insertan para un ajuste más suave.

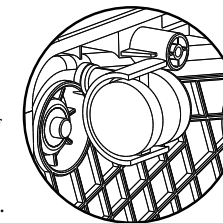


Rotate the unit to the other side, tilt and hold it with one hand, then insert the remaining two caster wheels.

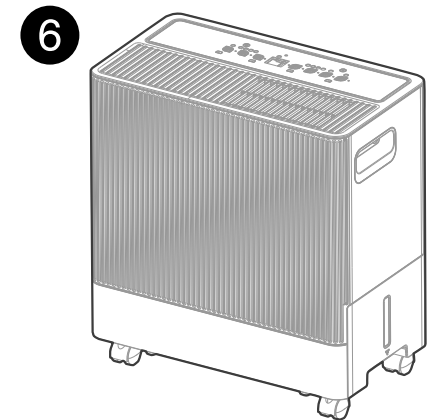
⚠ ADVERTENCIA: NO incline la unidad más de 30° durante la instalación. No mantenga la unidad en posición inclinada durante más de cinco minutos.



Before inserting
Antes de insertar



Correctly inserted
Insertado correctamente



Leave in a vertical position for 30 minutes before use.

Dejar en posición vertical durante 30 minutos antes de usar.