



Lenovo Smart Frame

Safety, Warranty & Quick Start Guide

Lenovo CD-3L501F

 Read this guide carefully before using your device.

Reading before using your device

Reading first - regulatory information

Device models equipped with wireless communications comply with the radio frequency and safety standards of any country or region in which it has been approved for wireless use. In addition, if your product contains a telecom modem, it complies with the requirements for connection to the telephone network in your country.

Be sure to read the *Regulatory Notice* for your country or region before using the wireless devices contained in your device. To obtain a PDF version of the *Regulatory Notice*, go to <https://support.lenovo.com>.

Getting support

After the frame is installed, use your mobile phone to search for and download the Lenovo Smart Frame App from Google Play Store or Apple App Store to begin the setup process. To learn more, go to <https://support.lenovo.com>.

Accessing your *User Guide*

Your *User Guide* contains detailed information about your device. To download the publications for your device, go to <https://support.lenovo.com> and follow the instructions on the screen.

Legal notices

Lenovo and the Lenovo logo are trademarks of Lenovo in the United States, other countries, or both.

Other company, product, or service names may be trademarks or service marks of others.

LIMITED AND RESTRICTED RIGHTS NOTICE: If data or software is delivered pursuant a General Services Administration "GSA" contract, use, reproduction, or disclosure is subject to restrictions set forth in Contract No. GS-35F-05925.

Open source information

Lenovo Smart Frame (the “Product”) may include software made publicly available by Lenovo, including software licensed under the General Public License and/or the Lesser General Public License (the “open source software”).

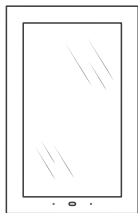
You may obtain corresponding copy of machine-readable source code for any such open source software licensed under the General Public License and/or the Lesser General Public License (or any other license requiring us to make a written offer to provide corresponding source code to you) from Lenovo for a period of three years without charge except for the cost of media, shipping, and handling, upon written request to Lenovo. This offer is valid to anyone in receipt of this Product. You may send your request in writing to the address below accompanied by a check or money order for \$15 to:

Lenovo Legal Department
Attn: Open Source Team / Source Code Requests
8001 Development Dr.
Morrisville, NC 27560

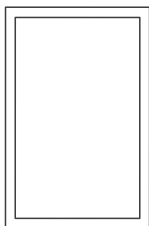
Please include the “Model” name and the “Build Number” of this Product as part of your request, which can be found in the “About Device” menu of the Lenovo Smart Frame application installed on your mobile device. Be sure to provide a return address.

The open source software is distributed in hope it will be useful, but WITHOUT ANY WARRANTY; without even the implied warranty of MERCHANTABILITY or FITNESS FOR A PARTICULAR PURPOSE. See for example the GNU General Public License and/or the Lesser General Public License for more information.

What's in the box



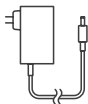
Smart Frame



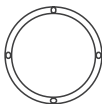
Outer Frame



Safety, Warranty &
Quick Start Guide



Power adapter



Mounting bracket
with protection cover



Drill bit



Strong screws



Brick wall plugs



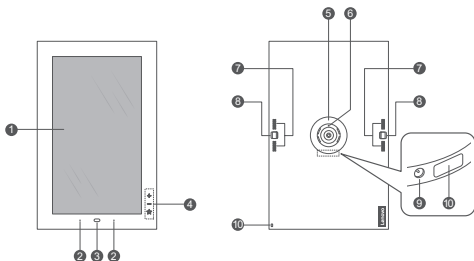
Drywall plugs



All pictures and illustrations in this document are for your reference only and may differ from the final product.

Device overview

Name	Model
Lenovo Smart Frame	Lenovo CD-3L501F

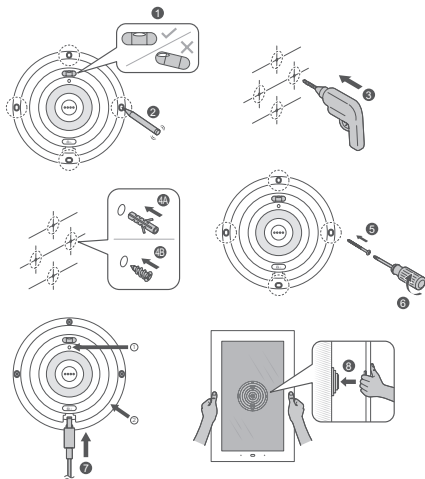


- | | |
|----------------------------|---------------------------|
| ① Screen | ⑥ Positioning pin |
| ② Microphones | ⑦ Speakers |
| ③ Gesture/Proximity Sensor | ⑧ Unlock buttons |
| ④ Virtual buttons ① | ⑨ Power adapter connector |
| ⑤ Base | ⑩ Service tool ② |

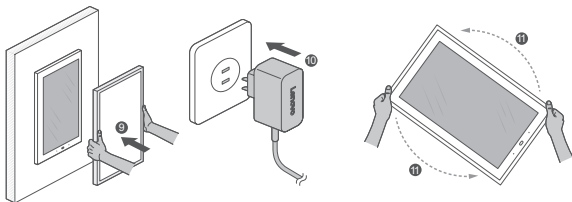
✎ All pictures and illustrations in this document are for your reference only and may differ from the final product.

- ① The virtual buttons will light up when you're near, specific functions are shown in the **Function Key**.
- ② Only used for after-sales service maintenance. Do not open the service tool cover. Doing so may cause permanent damage to the Lenovo Smart Frame.

Wall mounting



- 1 Make sure the level is on top and in a horizontal position.
- 2 Draw the position of the four holes with a pencil.
- 3 Use a power drill with a $\frac{15}{64}$ inch (about 6 mm) drill bit to drill four holes in the wall.
- 4 - 6 First install the plugs into the four holes, then place the mounting bracket and use a screwdriver and four strong screws to fix in place.
 - For brick wall, use brick wall plugs and strong screws. (4A, 5)
 - For drywall, use drywall plugs and strong screws. (4B, 5)
- 7 Connect the power adapter.
- 8 Place the main frame on the mounting bracket, and make sure the positioning pin is inserted into the *positioning hole* ①. A clicking sound indicates it has been installed correctly.
- ② The wall mounting bracket has a built-in reel to wind the cord around and keep the cord tidy.

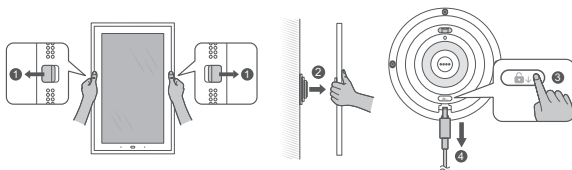


9 Install the outer frame gently to avoid accidental damage.

10 Plug the charger into the power outlet.

- Users can choose whether to first install the main frame or outer frame as needed.
- The product supports horizontal and vertical rotation.
- **Caution for outer frame edges.**

Removal Instructions



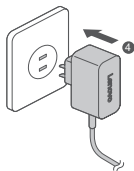
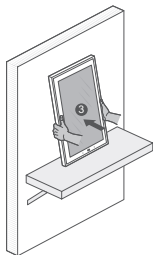
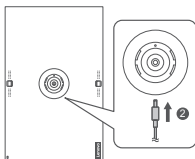
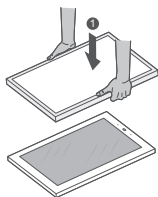
1 **Unplug the charger**, then pull the left and right unlock buttons outwards to unlock the frame.

2 Remove the frame.

3 - 4 Press the unlock key, and pull the charging head gently.

- Users can also first remove the outer frame and then remove the frame. If starting from the outer frame, remove from the four corners.

Desktop mode



1

2

3

4



Install the outer frame gently to avoid accidental damage.

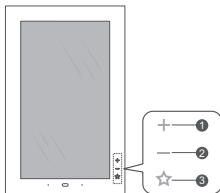
Connect the power adapter.

Make sure the bottom of the product fitting on the table completely.

Plug the charger into the power supply.

- The outer frame does not have an anti-slip feature, please pay attention to prevent the product from slipping when in desktop mode.
- **Caution for outer frame edges.**

Function Key



1

2

3

Single tap: Next item

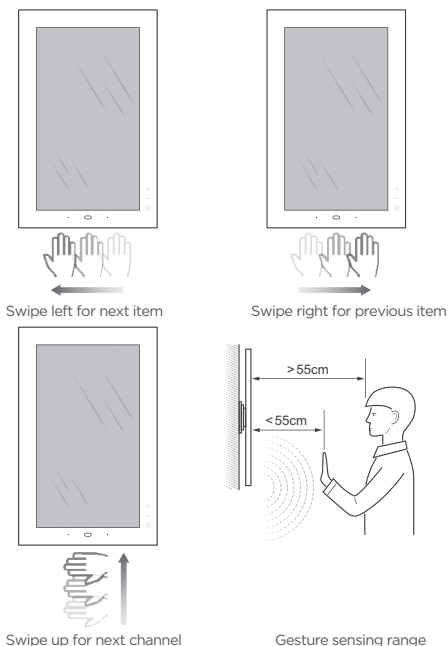
Single tap: Previous item

Single tap: Next channel
Long press (over 1.5s): mark or unmark a photo as a favorite



Press 2 and 3 simultaneously for 5 seconds to put the smart frame in reconfiguration mode.

Gesture Control



- The virtual buttons located on the right side of the frame will light up when you're near, indicating the frame is ready for gestures.
- To control the frame with gestures, make sure your hand slides parallel to the frame and through the range of the sensor. Users should stand within gesture sensing range for better using experience. Sunlight and bright light (>1000Lux) environments may affect use.

Important safety and handling information

Plastic bag notice

Danger: Plastic bags can be dangerous. Keep plastic bags away from babies and children to avoid danger of suffocation.

Safety instructions for parents and adult supervisors

Your device is not a toy. As with all electrical products, precautions should be observed during handling and using of electrical products to reduce the risk of electric shock. If parents choose to allow children to use the device, they should caution his or her child about the potential hazard, for example the outer frame edges, while using and handling the device.

Parents should inspect the device (including the ac power adapter and the small part, for example screws and plugs, as applicable) for damage after open the box. Make sure to keep these small parts away from your child to prevent accidental hurts especially swallowing. If any small parts have been swallowed or placed inside any part of the body, see immediate medical attention soon. Routinely check this device to ensure that the device is working properly and is safe for children to use.

Service and support information

Lenovo Limited Warranty notice

This product is covered by the terms of the Lenovo Limited Warranty (LLW), version L5050010-02 08/2011. Read the LLW at https://www.lenovo.com/warranty/llw_02. You can view the LLW in a number of languages from this website.

Warranty information

Lenovo provides a warranty period for your device. To check the warranty status of your device purchase upgrades, go to <https://support.lenovo.com/warrantylookup>, and then select the product and follow the on-screen instructions.

Get support

Log into Smart Frame APP, get support from Lenovo by entering “Help” page.

Visit Lenovo’s support website (<https://support.lenovo.com>) with the device serial number to get more Lenovo support options, or scan the QR code, and then follow the on-screen instructions.



Environmental, recycling, and disposal information

General recycling statement

Lenovo encourages owners of information technology (IT) equipment to responsibly recycle their equipment when it is no longer needed. Lenovo offers a variety of programs and services to assist equipment owners in recycling their IT products. For information on recycling Lenovo products, go to <http://www.lenovo.com/recycling>.

WEEE information



Electrical and electronic equipment marked with the symbol of a crossed-out wheeled bin may not be disposed as unsorted municipal waste. Waste of electrical and electronic equipment (WEEE) shall be treated separately using the collection framework available to customers for the return, recycling, and treatment of WEEE. Country-specific information is available at: <http://www.lenovo.com/recycling>

Recycling information for Japan

Recycling and disposal information for Japan is available at: <http://www.lenovo.com/recycling/japan>

Additional recycling statements

Additional information about recycling device components and batteries is in your *User Guide*. See “**Accessing your User Guide**” for details.

Restriction of Hazardous Substances Directive (RoHS)

Turkey

Lenovo products sold in Turkey, on or after June 1, 2009, meet the requirements of the former Republic of Turkey Restriction of Hazardous Substances legislation from 30th of May 2008 and the Control of Waste Electrical and Electronic Equipment Regulations from 22nd of May 2012 ("Turkey RoHS").

Ukraine

Lenovo products sold in Ukraine, on or after January 1, 2011, meet the requirements of the Technical Directive on Restriction of Hazardous Substances in Electric and Electronic Equipment enforced by the Government, Decision No 1057 dated 2008/12/03" ("Ukraine TR on RoHS").

India

Lenovo products sold in India, on or after May 1, 2012, meet the requirements of the India E-waste (Management) Rules ("India RoHS").

Vietnam

Lenovo products sold in Vietnam, on or after September 23, 2011, meet the requirements of the Vietnam Circular 30/2011/TT-BCT ("Vietnam RoHS").

European Union

Lenovo Products meet the requirement of Directive 2011/65/EC on the restriction of the use of the certain hazardous substances in electrical and electronic equipment ("RoHS 2"). Lenovo products sold in the European Union, from the 21st July 2019, meet the requirement of Commission Delegated Directive (EU 2015/863) amending Directive 2011/65/EU. For more information about Lenovo progress on RoHS, go to: https://www.lenovo.com/us/en/social_responsibility/RoHS-Communication.pdf

Singapore

Lenovo products sold in Singapore, on or after June 1, 2017, meet the requirements of Government Gazette order No. S 263/2016 Restriction of Hazardous Substances in Electrical and Electronic Equipment in Singapore ("SG-RoHS").

European Union compliance statement

European Union conformity



Compliance with the RE Directive

Lenovo PC HK Limited declares that the radio equipment type Lenovo CD-3L501F is in compliance with Directive 2014/53/EU.

The full text of the EU declaration of conformity is available at the following internet address:

<https://www.lenovo.com/us/en/compliance/eu-doc>

This radio equipment operates with the following frequency bands and maximum radio-frequency power:

Model Name	Frequency Bands	Maximum Conducted Power (dBm)
Lenovo CD-3L501F	WLAN 2400-2483.5	<20
	WLAN 5150-5250	<20
	WLAN 5250-5350	<20
	WLAN 5470-5725	<20
	WLAN 5725-5850	<14
	Bluetooth 2400-2483.5	<10

ⓘ The above information is for EU countries only. Please refer to the actual product for supported frequency bands in other countries.

© Copyright Lenovo 2020.

Reduce | Reuse | Recycle



V1.3_20200904



72-WANLUT-QSGC1

MC

Printed in China