



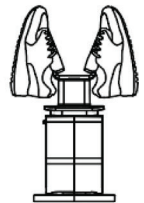
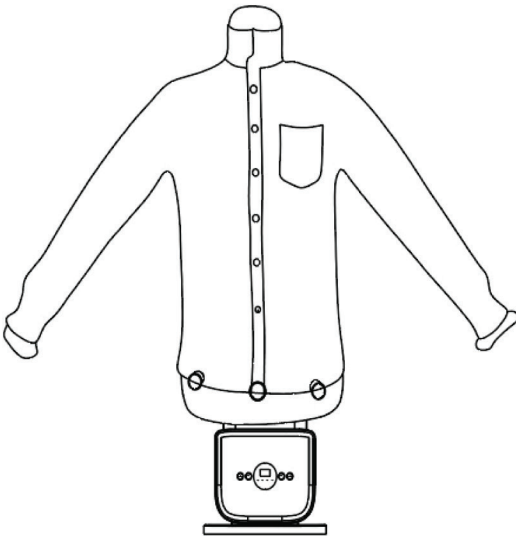
# BELLAIRON

The italian way of ironing

## Ironing & Drying Machine

Instruction Manual

*Please read the instructions in full carefully before use and keep them for future reference.*





## ■ TABLE OF CONTENTS

Quick start guide — start here for perfect results	3
Watch the Video	3
Need Help?	3
Intended Use	4
Safety Precautions	4
Product Specification	4
Product Features	5
Product Overview	5
SHIRTS	6
Assembly	6
PANTS	8
SHOES	9
Disassembly	9
How to Use	10
Troubleshooting	11

## ■ QUICK START GUIDE — **START HERE FOR PERFECT RESULTS**

Follow these essential steps to get the best performance from your Bellairon.

### **1. Ensure Proper Seal**

Make sure the elastic of the air bag is tightly secured under the black flange. No air should escape.

### **2. Adjust the Balloon Size**

- ▶ Each side has two zippers.
- ▶ Open the zippers depending on the shirt size.
- ▶ The air bag must be slightly larger than the shirt so the fabric stays stretched.

### **3. Use a Wet or Damp Shirt**

- ▶ The shirt must be wet (fresh from washer or sprayed with water).
- ▶ Dry shirts cannot be ironed.

### **4. Position the Shirt Correctly**

- ▶ Put the wet shirt on from the back, pull it down evenly, and stretch sleeves and body.
- ▶ Lift the collar, bring the tips together, and secure with a clip.
- ▶ Attach the weights at the bottom.

### **5. Set the Right Temperature**

- ▶ Select 160°F for ironing.
- ▶ Use a lower setting only for very delicate fabrics (like silk).

### **6. Smooth During Inflation**

- ▶ As the balloon inflates, gently smooth the shirt.
- ▶ Any fold left at this stage will dry in place.



### **▶ Watch the Video**

Scan the QR code or visit:  
<https://bellaironllc.com/pages/howitworks>

### **✉ Need Help?**

[info@bellaironllc.com](mailto:info@bellaironllc.com)

## ■ INTENDED USE

1. This device is designed for drying and pressing garments like shirts and blouses. Do not use it on delicate fabrics (e.g., wool) that are not suitable for pressing. Always check the care label before use.
2. For personal use only. Not intended for commercial or industrial use.
3. Use the device only as described in this manual. Any other use is considered improper.

## ■ SAFETY PRECAUTIONS

1. Keep the device away from water, fire, and damp areas. Place it on a flat, stable surface with good ventilation.
2. Clean only with a soft, dry cloth. Do not immerse any part of the device or cable in water.
3. Do not use dripping-wet clothes; hang garments slightly damp.
4. Not suitable for users (including children) with limited physical or mental ability unless supervised.
5. Keep out of reach of children. Do not allow them to play with the device.
6. Never block the air inlet or outlet.
7. If the power cord is damaged, contact an authorized repair center. Do not open or repair the device yourself.
8. Always unplug the device when not in use or when cleaning, assembling, or disassembling.
9. Let the device cool down completely before storing or cleaning.
10. Use only on garments like shirts or pants. Avoid delicate fabrics.



**Caution:** Hot Surface – Do not touch the motor unit or rod during or just after use.

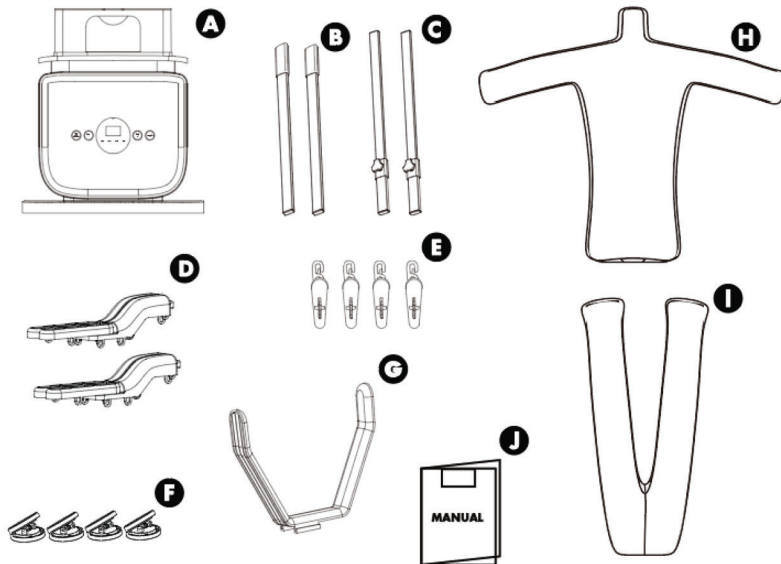
## ■ PRODUCT SPECIFICATION

Rated Voltage:	120V~
Rated Frequency:	60Hz
Rated Power:	1250W
Timer:	0–180 minutes or continuous
Protection Class:	II

## ■ PRODUCT FEATURES

1. Ceramic heating element for safe, even heat.
2. Powerful yet quiet fan for efficient airflow.
3. Sleek design with garment clips and a retractable power cord.
4. Hot air tension technology smooths and dries clothes quickly at high temperatures.

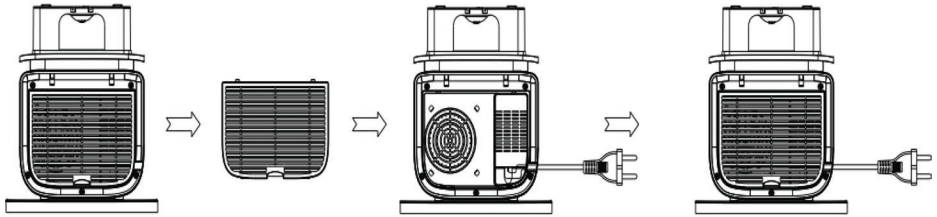
## ■ PRODUCT OVERVIEW



Serial No.	Part name	Quantity	Serial No.	Part name	Quantity
A	Motor unit	1set	F	clamps with integrated weight	4pcs
B	Lower rod	2pcs	G	Shoes rack	1pc
C	Telescopic rod	2pcs	H	Shirts balloon	1pc
D	Hanger	1set	I	Pants balloon	1pc
E	Clips	4pcs	J	Instruction Manual	1pc

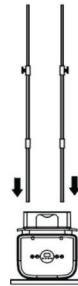
## ■ ASSEMBLY

1. Remove the power plug from the back of the motor unit as shown.



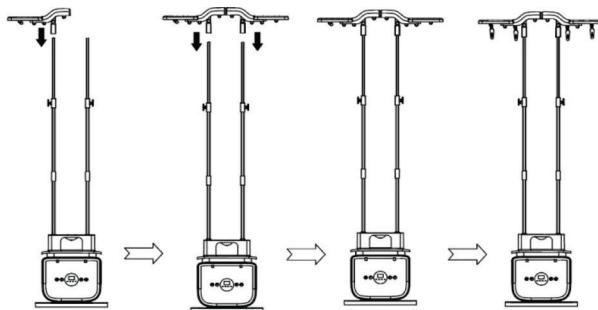
## SHIRTS

**Install the rods:** Insert the telescopic and lower rods into the base. Push them firmly all the way down until they are fully secured and do not wobble. If needed, extend the rods to fit the length of your shirt by loosening the screw, adjusting the height, and tightening it again.



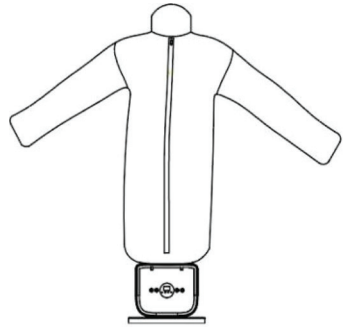
**Attach the hanger to the top.**

**Optional:** If you want to dry small items (such as underwear or light garments) inside the Shirt Balloon, you can attach the 4 clips to the top and use them to hang these items.





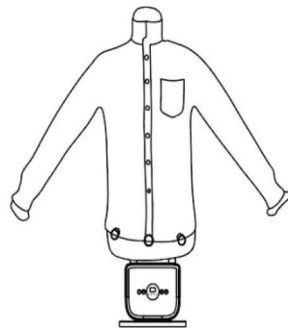
**Fit the air bag:** Place the shirt air bag on the base and secure the elastic cord around the flange. Make sure the elastic is fully tucked under the flange so no air can escape.



**Prepare the air bag size:** The air bag has two zippers on each side. Open the zippers as needed, depending on the size of your shirt. The air bag must be one size larger than the shirt so it can stretch the fabric properly

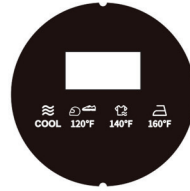


**Hang the shirt:** Put the wet shirt on the air bag from the back. Lift the collar, bring the two collar tips together, and secure them with a clip so the collar can dry and iron properly.



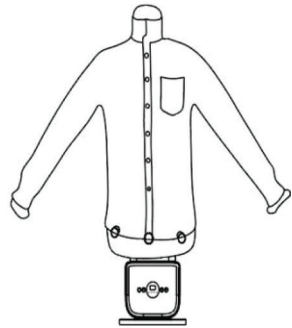


**Select the temperature:** Turn on the device and set the temperature to 160°F, which is required for ironing. For very delicate fabrics (such as silk), you may use a lower temperature.



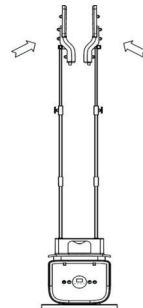
**Note:** The shirt must be wet to iron properly. The device cannot iron dry shirts.

**Adjust the fit:** Once the air bag inflates, gently pull the shirt down and straighten the fabric, including the sleeves. Ensure there are no folds or wrinkles, as the shirt will dry in that shape.



## PANTS

1. Flip the hanger upside down as shown.



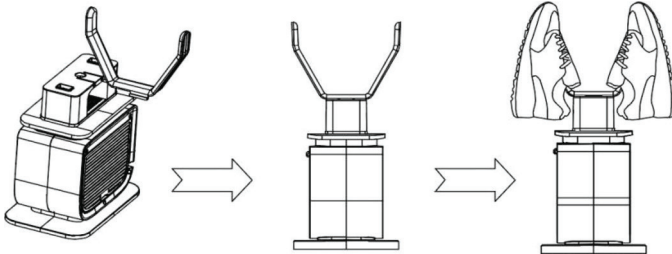


2. Place the pants air bag on the base and secure the elastic cord.
3. Pull the pants over the airbag and start the motor.



## SHOES

Insert the shoe rack into the base as shown and place the shoes on top.



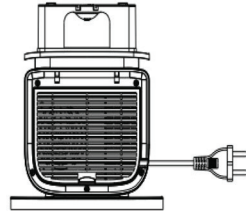
## ■ DISASSEMBLY

To disassemble this machine, follow the assemble steps in reverse.



## ■ HOW TO USE

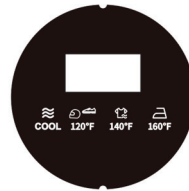
1. Plug the device into a power socket. It will enter standby mode.



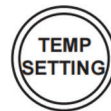
2. Press the ON/OFF button to start.



3. Choose the desired temperature: COOL, 120°F, 140°F, or 160°F.



4. Use TIME+ / TIME- to set the duration. The machine will start automatically.





## ■ TROUBLESHOOTING

Sr#	Problem	Solution
1	Device not working (no LED lights)	<ul style="list-style-type: none"><li>▶ Check the power plug and socket.</li><li>▶ Try a different outlet.</li><li>▶ Check the fuse.</li><li>▶ Make sure the timer is set.</li></ul>
2	Unusual noises	<ul style="list-style-type: none"><li>▶ Ensure the air outlet is not blocked.</li></ul>
3	Device shuts off suddenly	<ul style="list-style-type: none"><li>▶ Outlet may be blocked.</li><li>▶ Device may have overheated.</li><li>▶ Let it cool and restart.</li></ul>
4	Odor on first use	<ul style="list-style-type: none"><li>▶ Slight odor is normal due to factory residue. It will disappear with use.</li></ul>



SCAN QR CODE TO SEE  
HOW IT WORKS

