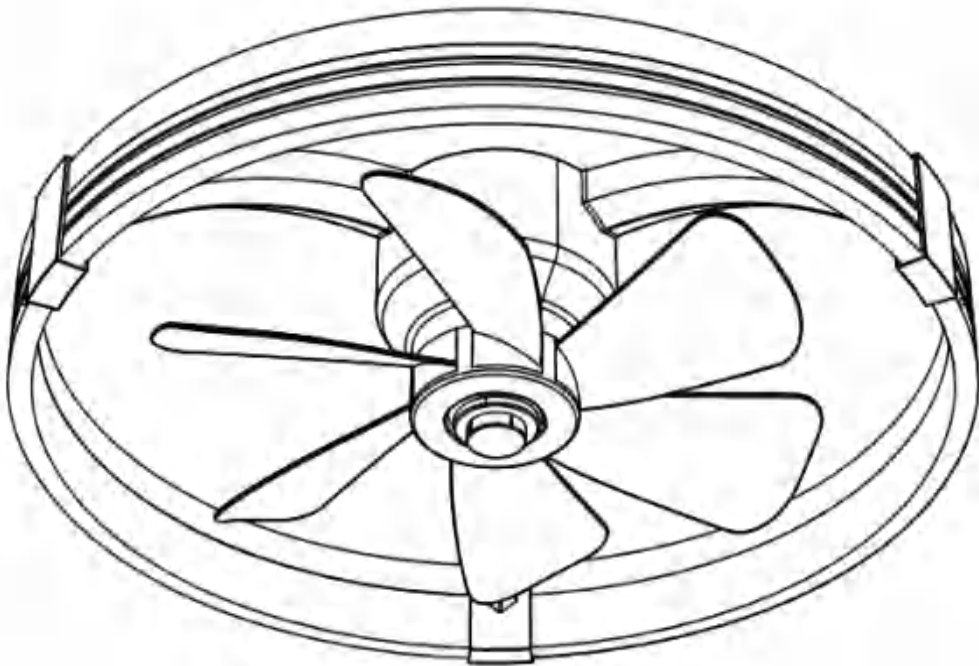


INSTALLATION & USER MANUAL

CEILING FAN WITH LIGHT

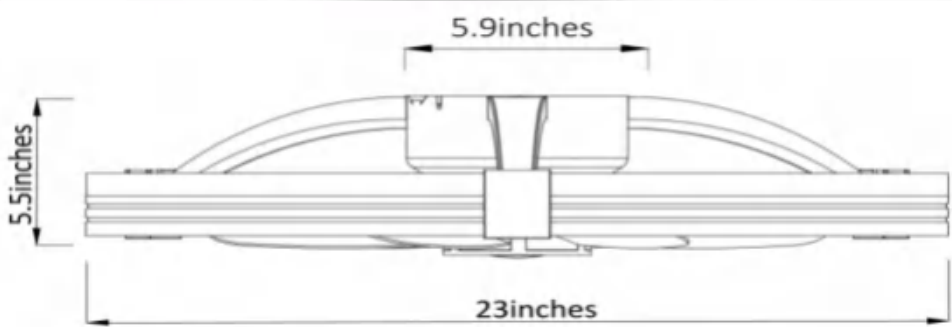


ITEM# 33083


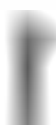




Customer Service:support @ ceilingfanhelp.com

CEILING FAN

Product Dimensions











ACCESSORIES

aa (3)  Wire Nut	bb (2)  J-Box Screw	cc (4)  Self-Tapping Screw
dd (2)  Expansion Screw	ee (4)  Plastic Expansion Tube	ff (4)  Washer

PACKAGE CONTENTS

■ Package includes 8 fan light accessories. Check for missing parts and confirm all items.

A (3)  Lamp Body Part	B (1)  Canopy Part	C (6)  Fan Blade	D (1)  Fan Blade Body
E (1)  Blade Cap	F (3)  Frame Arm Cover	G (3)  Frame Arm	H (1+1)  Remote Control Kit

CEILING FAN

IMPORTANT WARNING

- To reduce the risk of electric shock, turn off all power sources.
- All wiring must comply with the National Electrical Code and local electrical codes. Electrical installation should be performed by a qualified licensed electrician.
- **WARNING:** To reduce the risk of personal injury, use only the two steel screws (and lock washers) provided with the outlet box for installation. Most outlet boxes are typically used to support lighting devices instead of fans and may need to be replaced. If in doubt, please consult a qualified electrician.
- Do not turn the fan blades until the fan installation is completed.
- To avoid personal injury or damage to the fan and other items, maintain and clean the fan with care.

WARNING

TO REDUCE THE RISK OF FIRE
ELECTRIC SHOCK OR PERSONAL INJURY
MOUNT FAN TO OUTLET BOX MARKED
ACCEPTABLE FOR FAN SUPPORT

HOW TO OPERATE YOUR CEILING FAN

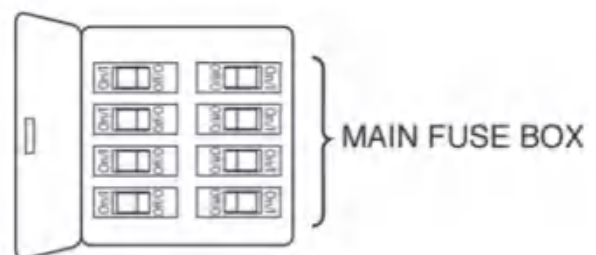
- **IMPORTANT:** Using a full range dimmer switch(not included) to control fan speed will damage the fan. To reduce the risk of fire or electrical shock, do not use a full range dimmer switch to control the fan speed(Figure 1).
- Restore electrical power to the outlet box by turning the electricity on at the main fuse box.(Figure 2).

WARNING

Check to see that all connections are tight, including ground, and that no bare wire is visible at the wire connectors, except for the ground wire.
Do not operate this fan with a variable(Rheostat) wall controller or dimmer switch. Doing so could result in damage to the ceiling fan's remote control unit.



(Figure 1)

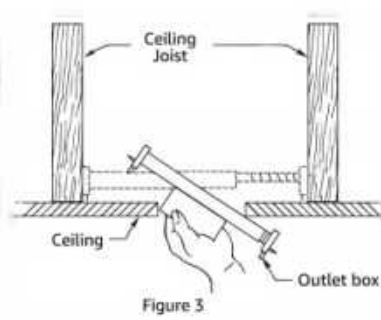
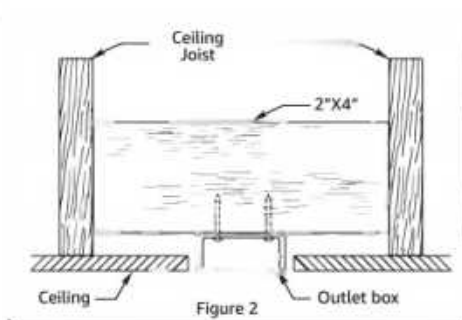
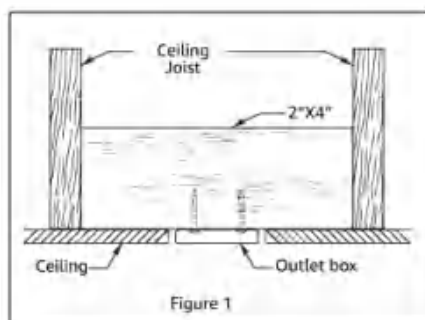


(Figure 2)

CEILING FAN

ELECTRICAL AND STRUCTURAL REQUIREMENTS

- Your new ceiling fan will require a grounded electrical supply line of AC110~130V/60Hz15 Amp Circuit. Electrical code requires use of a fan-rated outlet box to support the extra weight and motion associated with a ceiling fan. A fan-rated box will be labeled as such and typically supports up to a 70lbs ceiling fan. Fan-Rated Outlet Boxes vary in ratings and design. Ensure the ratings of Your ceiling fan outlet box meet the requirements for the ceiling fan being installed. Figure 1, Figure 2 and Figure 3 depicts different structural configurations that may be used for mounting the outlet box.
- Low-profile use (Figure 1):
A 1/2-deep pancake box is meant to be screwed to a joist or block. It is used if only one cable is coming into the box. It is also available in a saddle-mount configuration.
- Deep-profile use (Figure 2)
A 2-1/4" deep box can be attached to blocking between joists and is roomy enough to handle more than one cable.
- Brace use (Figure 3)
Paired with a deep box, this hanger is meant to span between two joists and takes the place of wooden blocking.



- If your fan is to replace an existing light fixture, turn power off at the main fuse box and remove the existing light fixture.

⚠ WARNING

Turning off wall switch is not sufficient, to avoid possible electrical shock be sure electricity is turned off at the main fuse box before wiring. All wiring must be in accordance with National and Local codes and the ceiling fan must be properly grounded as a precaution against possible electrical shock.

⚠ WARNING

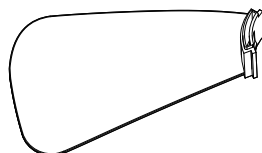
Do not operate this fan with a variable(Rheostat) wall controller or dimmer switch. Doing so could result in damage to the ceiling fan's remote control unit.

CEILING FAN

FAN BLADE: INSTALL/REMOVE

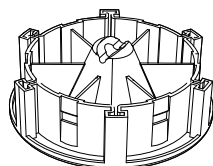
Needed accessories:

C (6)

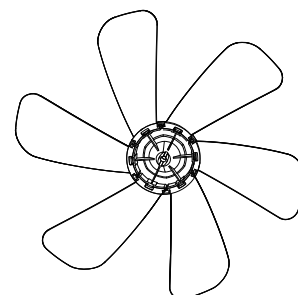


Fan blade

D (1)

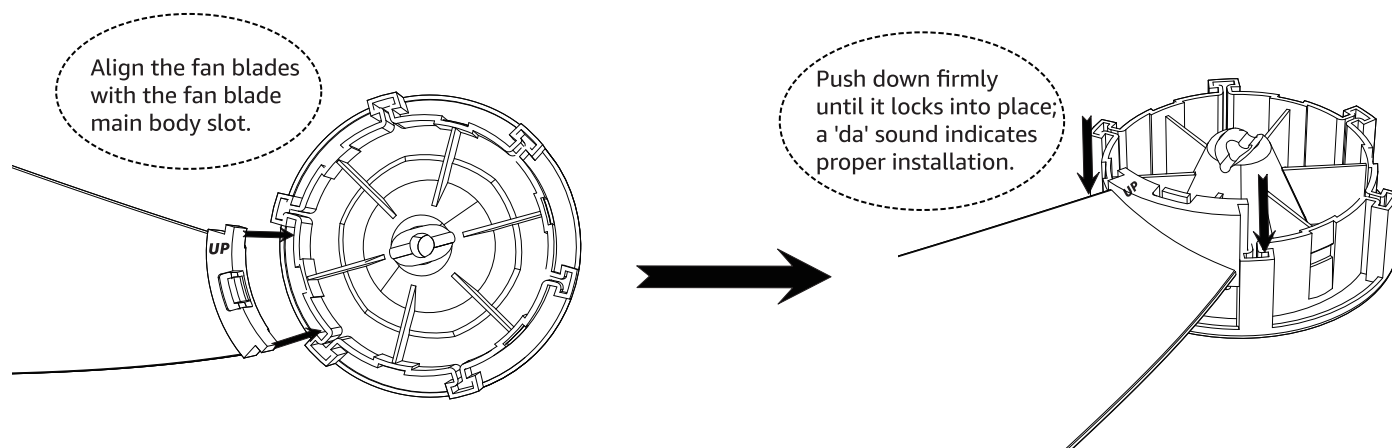


Fan blade body



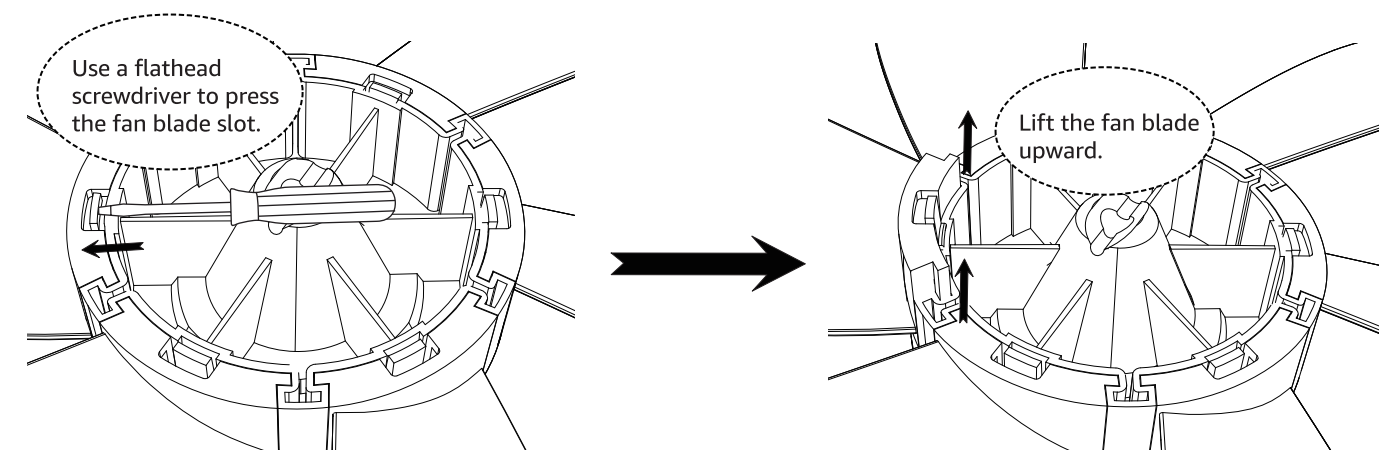
INSTALL

Note: 'UP' mark and fan clips must face upward – incorrect orientation prevents use.



REMOVE

Note: Please push the screwdriver towards the tail of the blade.

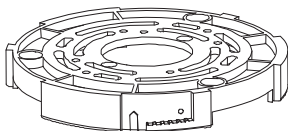


CEILING FAN

INSTALL CEILING HANGING BOARD

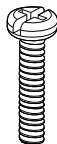
Needed accessories:

(1)



Hanging board (pre-assembly)

bb (2)



J-box screw

cc (4)



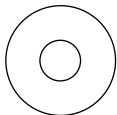
Self-tapping screw

ee (4)



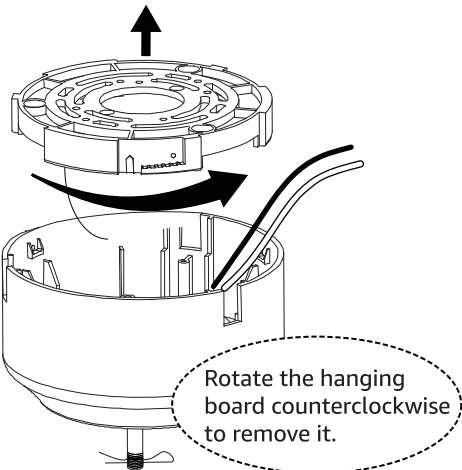
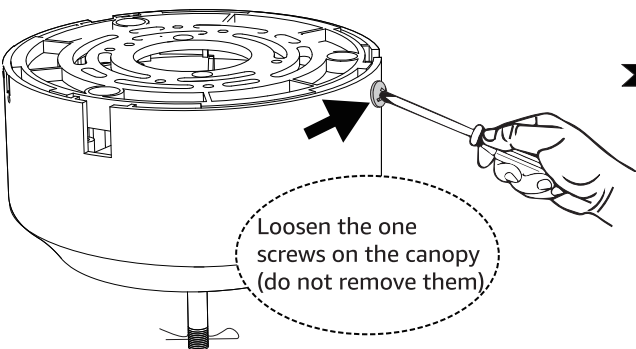
Plastic expansion tube

ff (4)



Washer

Note: Do not remove the four screws on the hanging board.

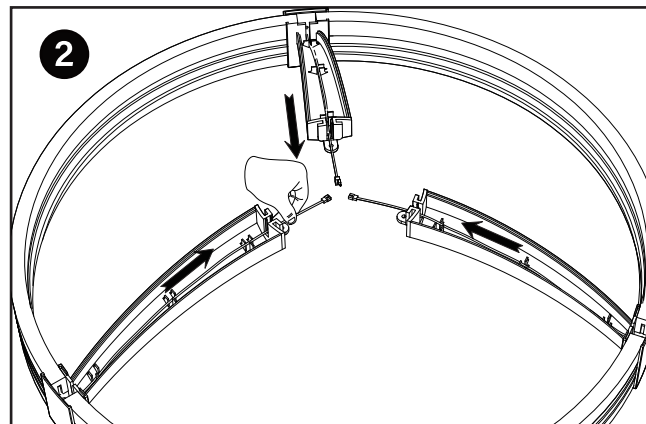
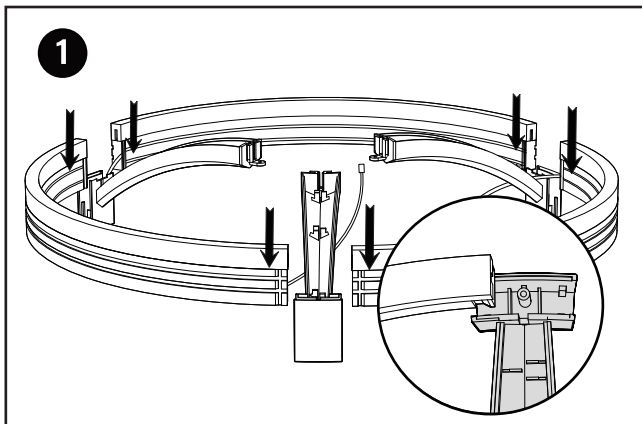


According to the user's ceiling situation, choose the corresponding installation

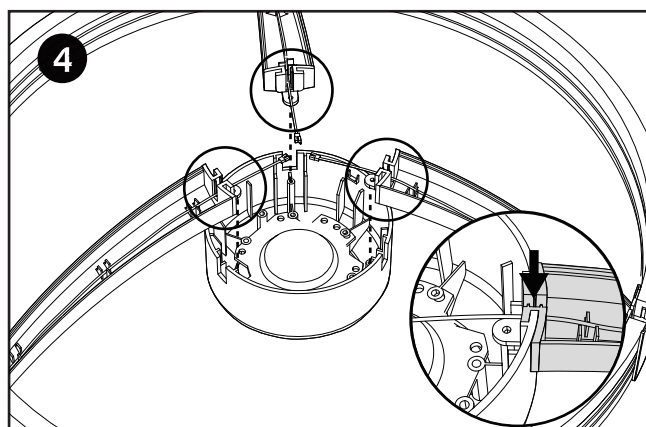
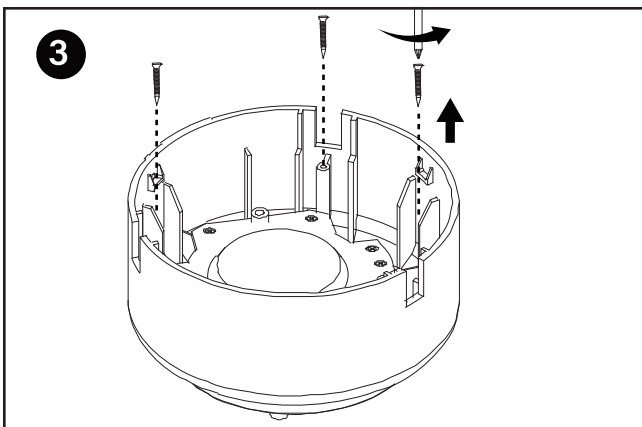
Junction box	Wooden ceiling	Cement ceiling

CEILING FAN

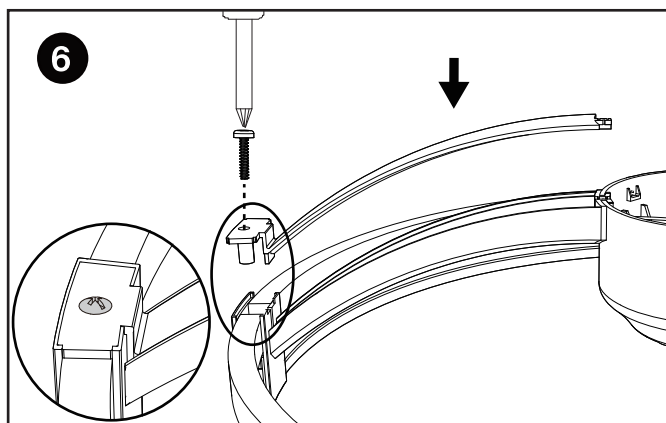
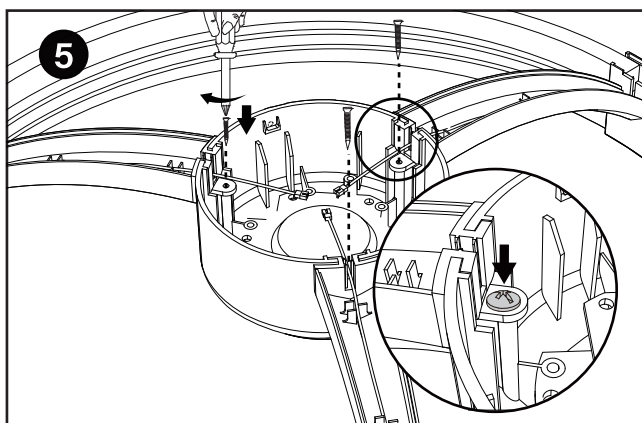
INSTALLATION



- 1** Simultaneously move the frame arm part downward and secure it in the slot.
- 2** Route and secure the wiring harness into the frame arm's designated wire channel.

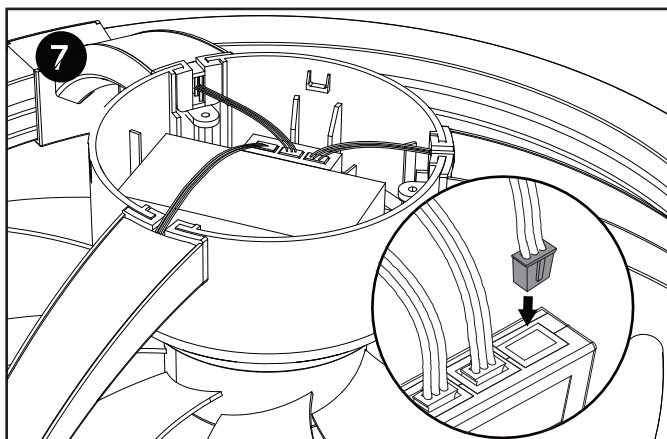


- 3** Remove the screws of the lamp body part pre-installed inside the fan motor host.
- 4** Align and snap the frame arm's retention buckle into the motor housing's designated mounting slot.

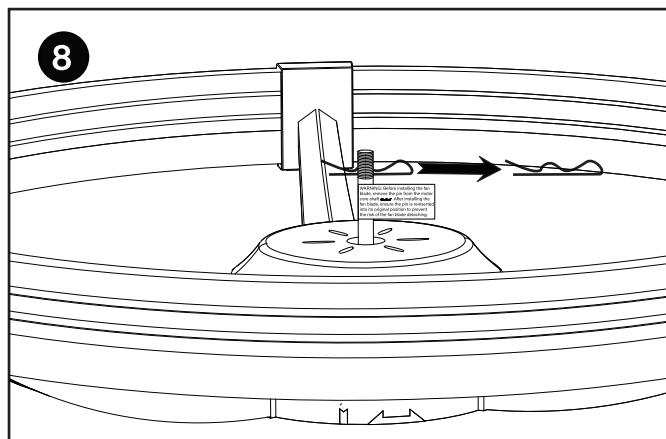


- 5** Use the screws removed in step three to tighten and secure.
- 6** Move the frame arm cover downward and install it onto the frame arm, then tighten and secure it using the screws pre-installed on the frame arm cover.

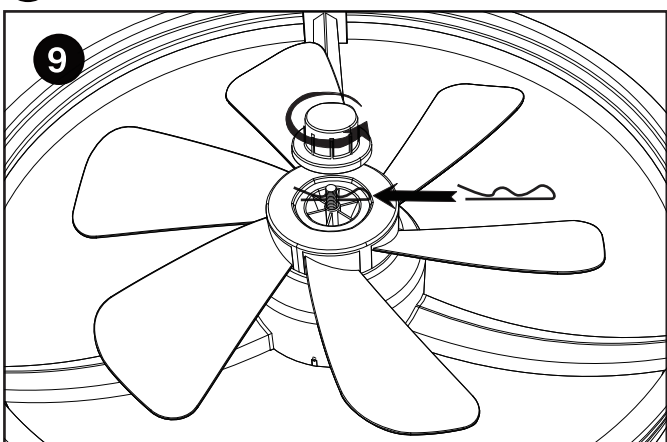
CEILING FAN



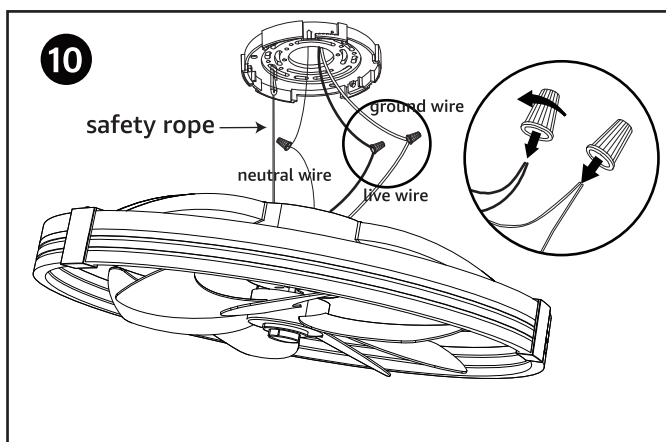
7 Insert the three terminal connectors.



8 Remove the pin from the motor core shaft. (Note: Remove the label.)



9 Align the fan blades with the motor core, insert the pin, and then screw in the fan blade cap counterclockwise to secure it.



10 Hang the lamp onto the ceiling plate using the pre-installed safety rope for added stability.

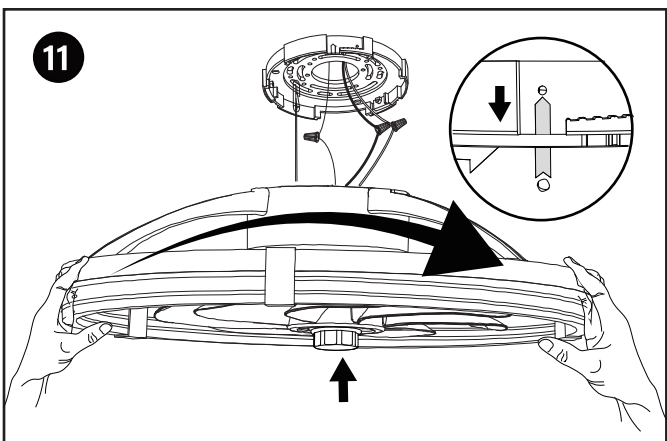
Wiring:

Connect the "Neutral wire" (white wire) from ceiling to the white wire.

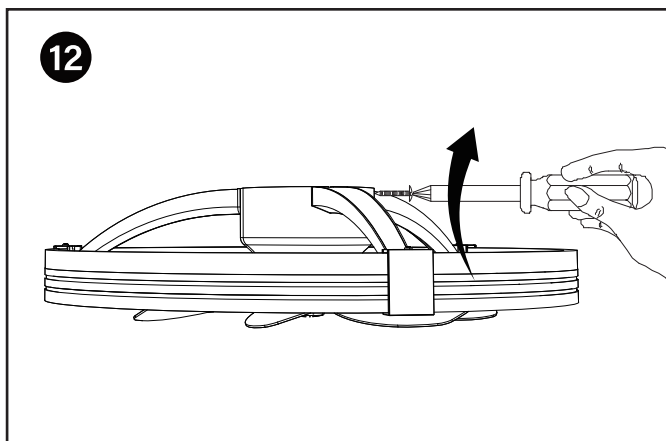
Connect the "Live wire" (black wire) from ceiling to the black wire.

Connect the "Ground wire"

(green or yellow/green or bare) from ceiling to the yellow/green wire.

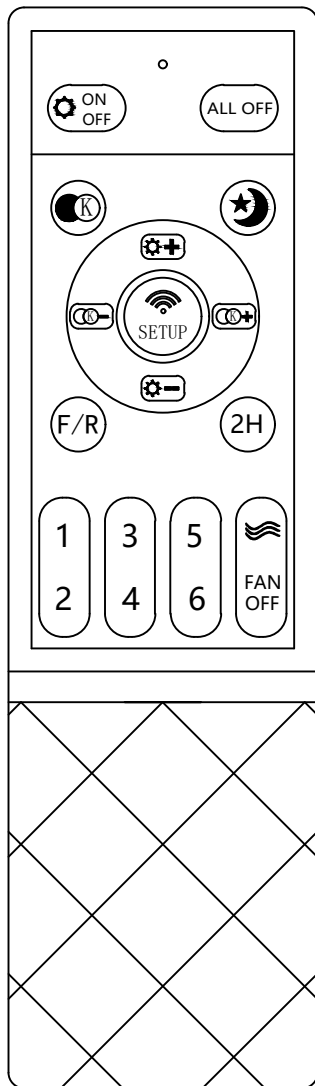








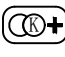
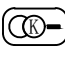


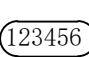



11 Gently push the fan upward, then rotate the ceiling fan to align it with the grooves.



12 Tighten the screw on the canopy.

Remote Control Operation



-  Light ON/OFF
-  ALL OFF
-  Color Temperature Switch
-  Night Light
-  Click or long press this button to increase the brightness
-  Click or long press this button to decrease the brightness
-  Long press this button to increase color temperature
-  Long press this button to decrease color temperature
-  Fan Forward/Reverse
-  Turn off automatically after 2-hour countdown
-  Fan speed, 1 is the lowest, 6 is the highest
-  Nature Wind
-  Fan off
-  code matching

Note

The remote control has been pre,paired at the factory and is ready for use after installation.

Pairing the Remote Control

1. Turn on the power switch.
2. within 5 seconds upon turning on , long press "SETUP" button, the light flashes 1 times , then the action is done.
3. If not , turn off the power, and repeat it after 1 minute.

Clearing the Remote Control Code

1. Turn on the power switch.
2. Within 3 seconds, press and hold the "ALL OFF" button to clear the code.

Troubleshooting

If the remote control does not operate the fan or lights:

1. Replace the AAA batteries (2 pieces, not included).
2. Pair the remote control again using the steps above.

Troubleshooting

Issue	Solution
The fan will not start.	<ul style="list-style-type: none">❑ Check the main and branch circuit fuses or breakers.❑ Check the line wire connections to the fan.❑ Check the battery in the remote control.❑ Ensure you are in the normal range of 10-20 feet.❑ Turn the main power source off, then restore power to the unit. Within 3 seconds of turning the fan's power on, press and hold the "SET Up" button for 5 seconds to complete the pairing process. Once the receiver detects the set frequency the fan's LED light will blink once.
The fan noisy.	<ul style="list-style-type: none">❑ Ensure all motor housing screws are snug.❑ Ensure the wire nut connections are not rattling against each other.❑ Allow a 24-hour "breaking in" period. Most noises associated with a new fan disappear during this time.❑ Ensure the canopy is a short distance from the ceiling. it should not touch the ceiling.❑ Ensure your outlet box is secure and rubber isolator pads were used between the mounting plate and outlet box.
The fan is wobbles.	<ul style="list-style-type: none">❑ This fan has a one-piece blade design, fan blade balancing kit is not applicable to this product.❑ If the fan wobbles, disconnect the power by removing the fuses or turning off the circuit breakers from the main power source, then check with the following: Remove the grille from the fan body by first removing the decorative cap at the center of the grille by rotating the decorative cap anti-clockwise, use a Phillips screwdriver to tighten the screw inside of the plastic threaded nipple❑ If the wobbling persists, adjust the angle of the grille slightly to make it more perpendicular to the ground.❑ If the problem persists, please contact our customer service.
Fan moves backwards and forwards when turned on.	<ul style="list-style-type: none">❑ This is normal start-up procedure for DC motor fans. The partial movement during start-up is the result of the DC motor aligning the internal magnetic poles for proper motor operation. This design saves electricity and allows the fan to operate much quieter than standard AC motor fans.