

Go to www.vtechphones.com to register your product for enhanced warranty support and the latest VTech product news.

VM2251
VM2251-2

Video Monitor



vtech[®]
User's manual

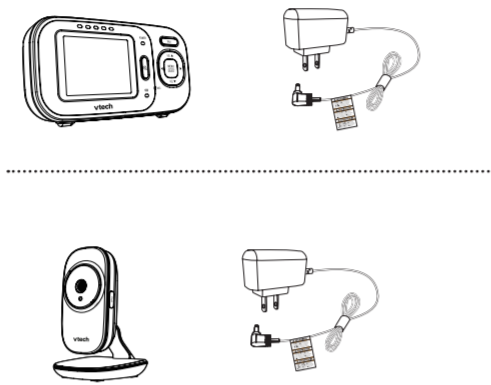
Congratulations

on purchasing your new VTech product. Before using this product, please read **Important safety instructions**.

This manual has all the feature operations and troubleshooting necessary to install and operate your new VTech product. Please review this manual thoroughly to ensure proper installation and operation of this innovative and feature rich VTech product.

For support, shopping, and everything new at VTech, visit our website at www.vtechphones.com.

What's in the box



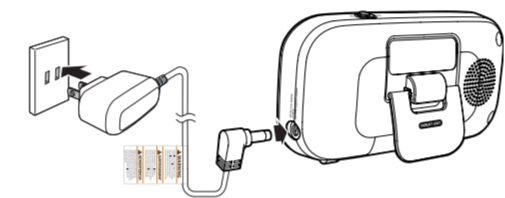
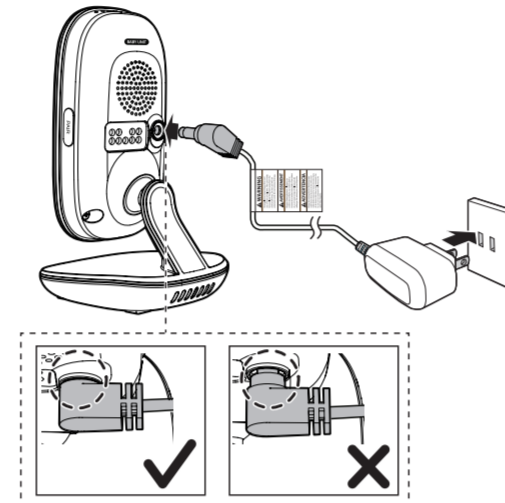
1 set for VM2251
2 sets for VM2251-2

Connect and charge the battery

NOTES

- The rechargeable battery is pre-installed in your parent unit.
- Use only the power adapters supplied with this product.
- Make sure the electrical outlets are not controlled by wall switches.
- The power adapters are intended to be correctly oriented in a vertical or floor mount position. The prongs are not designed to hold the plug in place if they are plugged into a ceiling, under-the-table or cabinet outlet.
- Make sure the parent unit, the baby unit and the power adapter cords are out of reach of children.

Connect the baby monitor



Charge the parent unit battery

When you have connected and turned on the parent unit, the battery will be charged automatically. The battery icon indicates the battery status (see the following table).

NOTES

- The parent unit battery is fully charged after 11 hours of continuous charging.
- It takes longer to charge the battery when the parent unit is turned on. To shorten the charging time, turn the parent unit off while charging.
- The standby time varies depending on the volume level you set and your actual use.

Battery indicators	Battery status	Action
The screen displays Battery low at Parent Unit . The or light flashes.	The battery has very little charge and may be used for only a short time.	Charge without interruption (about 30 minutes).
The battery icon becomes solid .	The battery is fully charged.	To keep the battery charged, connect it to AC power when not in use.

Before use

NOTE

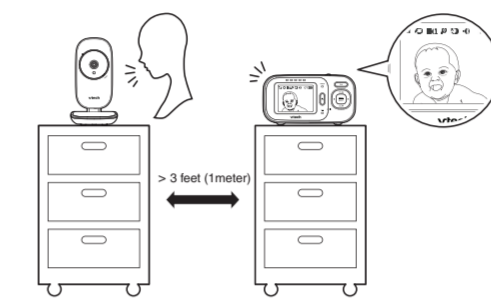
- This baby monitor is intended as an aid. It is not a substitute for proper adult supervision, and should not be used as such.

Test your baby monitor

You may test the baby monitor before initial use, and at regular times thereafter.

CAUTION

- For hearing protection, make sure the parent unit is more than 3 feet (1 meter) away from both baby units. If you hear any high-pitched noise, move the parent unit further until the noise stops. You can also press **VOL** on the parent unit to lower or mute the noise.



- Make sure your baby unit and parent unit are on.
- The parent unit displays images from the baby unit.
 - Speak towards the microphone of the baby unit. You will hear the sound at the parent unit.
- If you have two baby units, view the image from one of them by switching cameras via menu. Then, repeat step 2.

NOTE

- When the parent unit displays **No link to Camera**, and the **POWER LED** light flashes, move the parent unit closer to the baby units (observe the minimum distance of 3 feet / 1 meter). You can also check if the baby monitor is connected to a live power socket and switched on.

TIP

- Increase the speaker volume of the parent unit if you cannot hear the sounds transmitted from the baby units.

Positioning the baby monitor

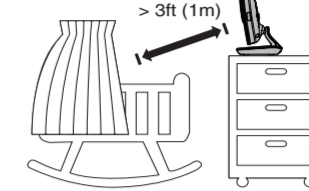
CAUTION

- Keep the baby unit out of the reach of your baby. Never place or mount the baby unit inside the baby's crib or playpen.

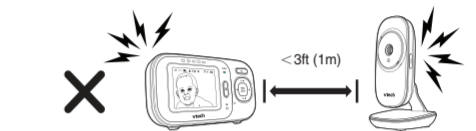
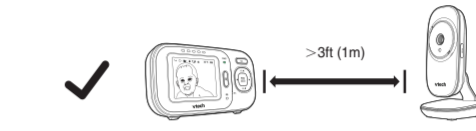
NOTE

- To avoid interference from other electronic devices, place your baby monitor far away from devices such as wireless routers, microwaves, cell phones and computers.

- Place the baby units more than 3 feet (1 meter) away from your baby.



- Place the parent unit more than 3 feet (1 meter) away from the baby units.



- Adjust the angle of the baby unit camera to aim at your baby.



CAUTION

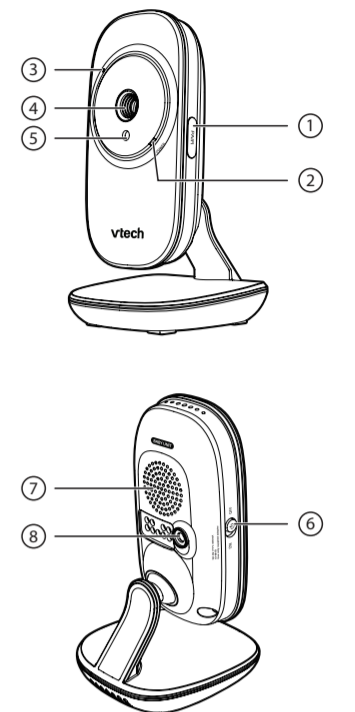
- The default volume of your parent unit is level 3. If you experience high-pitched screeching noise from your baby monitor while positioning:
 - Make sure your baby units and parent unit are more than 3 feet (1 meter) apart, OR
 - Turn down the volume of your parent unit.

Operating range

The operating range of the baby monitor is up to 1000 feet (300 meters) outdoors or 160 feet (50 meters) indoors. The actual operating range may vary depending on the environmental conditions and other interferences such as walls, doors and other obstructions.

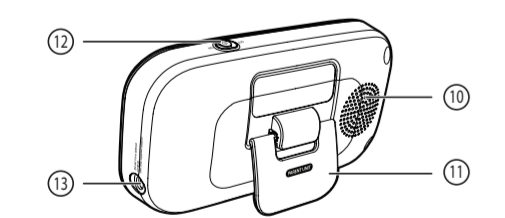
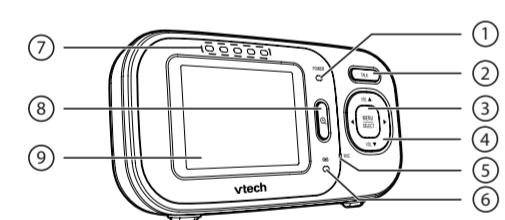
Overview

Baby unit overview



1	PAIR button
2	Power indicator <ul style="list-style-type: none"> On when the baby unit is turned on and is paired to the parent unit. Flashes when the baby unit is not being viewed; or when the link to the parent unit is lost.
3	Microphone
4	Camera

5	Light sensor
6	ON/OFF switch <ul style="list-style-type: none"> Slide to turn on or off the baby unit.
7	Speaker
8	Power jack <ul style="list-style-type: none"> Connects with AC power adapter.



Parent unit overview

1	Power indicator <ul style="list-style-type: none"> Green when the parent is powered on. Flashes green when no link to camera.
2	TALK <ul style="list-style-type: none"> Press and hold to talk to the selected baby unit in SINGLE-CAM or PATROL mode.
3	MENU/SELECT <ul style="list-style-type: none"> Press to enter or exit the menu. While in a sub-menu, press to choose an item, or save a setting.

4	Arrow keys and VOL▲ / VOL▼ <p>VOL▲</p> <ul style="list-style-type: none"> Press to increase the parent unit speaker volume. While in a menu, press to scroll up, or to enter an item's sub-menu. While zooming in SINGLE-CAM or PATROL mode, press and hold to move the zoomed image upward. <p>VOL▼</p> <ul style="list-style-type: none"> Press to decrease the parent unit speaker volume. While in a menu, press to scroll down. While zooming in SINGLE-CAM or PATROL mode, press and hold to move the zoomed image downward. <p>◀</p> <ul style="list-style-type: none"> While in a menu, press to choose the next item on the left. While zooming in SINGLE-CAM and PATROL mode, press and hold to move the zoomed image leftward. <p>▶</p> <ul style="list-style-type: none"> While in a menu, press to choose the next item on the right. While zooming in SINGLE-CAM or PATROL mode, press and hold to move the zoomed image rightward.
5	MIC
6	Battery indicator <ul style="list-style-type: none"> Red when battery is charging. Flashes red when battery is low.

7	Visual sound indicator <p>○ ○ ○ ○ ○</p> <p>The visual sound indicator can show the sound level detected by the baby unit.</p> <p>Sound level detected by the baby unit</p> <ul style="list-style-type: none"> ● ● ● ● ○ One to three green lights indicate a moderate sound level detected by the baby unit. ● ● ● ● ● Additional red lights indicate a higher sound level detected by the baby unit (e.g. baby crying loudly).
8	Zoom <ul style="list-style-type: none"> Press to zoom in or out while viewing image in SINGLE-CAM or PATROL mode.
9	Main screen
10	Speaker
11	Stand
12	ON/OFF switch <ul style="list-style-type: none"> Slide to turn on or off the parent unit.
13	Power jack

Parent unit status icons

	Connection status <ul style="list-style-type: none"> or displays when strong signal strength is detected between the baby unit and the parent unit. or displays when moderate or low signal strength is detected between the baby unit and the parent unit. displays when the link between the baby unit and the parent unit is lost.
	Patrol mode <ul style="list-style-type: none"> Displays when the parent unit is in PATROL mode.
	Current view status <ul style="list-style-type: none"> Displays the baby unit number that is being viewed when in SINGLE-CAM or PATROL mode.
	Zoom <ul style="list-style-type: none"> Displays when the camera at the baby unit has zoomed in.
	Night vision <ul style="list-style-type: none"> Displays when the baby unit being viewed has activated the night vision feature.
	Mute alert <ul style="list-style-type: none"> Displays when the parent unit speaker volume is set to off.
	Real-time temperature <ul style="list-style-type: none"> Displays the real-time temperature detected by the baby unit in Fahrenheit (°F) or Celsius (°C) (e.g. 57°F or 14°C).
	Battery status <ul style="list-style-type: none"> animates when the battery is charging. displays solid when the battery is fully charged. displays when the battery is low and needs charging.
	Speaker volume <ul style="list-style-type: none"> Displays the parent unit speaker volume level while adjusting.

Parent unit main menu icons

	Monitoring mode <p>You can enter the monitoring mode to view the video from the baby unit.</p>
	Brightness <p>You can change the brightness of the parent unit screen.</p>
	LCD screen off timer <p>You can set a specific time to turn the screen off.</p>
	VOX Sensitivity <p>With this feature, you can choose to hear sounds from the baby unit all the time, or to hear sounds that exceed a certain level. You can use the parent unit to adjust the microphone sensitivity of your baby unit. The higher the sensitivity level, the more sensitive the baby unit is in detecting sounds for transmitting to the parent unit.</p>
	Sound-activated screen <p>Automatically turns on the parent unit screen when a baby unit detects a sound after the screen is turned off. When no sound is detected, the screen is automatically off to save power.</p>
	Temperature <p>You can turn on the temperature alert tone so that the parent unit beeps whenever the room temperature detected by the baby unit falls outside of the desired temperature range. You can also set the temperature format to display the real-time temperature in baby's room, or set the maximum/minimum temperature limit for alerts.</p>

Parent unit warning icons and messages

	/No link to Camera <p>The selected baby unit is out of range or is turned off.</p>
	/Battery low at Parent Unit <p>The battery is empty and needs to be recharged.</p>
	Searching for baby units.
	/Temperature too high <p>The temperature detected by the baby unit is higher/lower than the desired temperature alert range.</p>
	/Temperature too low <p>The parent unit is searching for baby units.</p>

* # represents the selected baby unit number.

Using the baby monitor

Power on or off the baby unit

- Slide the **ON/OFF** switch up to turn on the baby unit. The **POWER LED** light turns on.
- Slide the **ON/OFF** switch down to turn off the baby unit. The **POWER LED** light turns off.

Power on or off the parent unit

- Slide the **ON/OFF** switch to **ON** to turn on the parent unit. The screen and the **POWER LED** light turns on.
- Slide the **ON/OFF** switch to **OFF** to turn off the parent unit. The screen and the **POWER LED** light turns off.

Adjust parent unit speaker volume

- Press **VOL▲/VOL▼** on the parent unit to adjust the speaker volume.

NOTE

- When the parent unit speaker volume is set to off, appears on the screen.

Adjust LCD brightness

You can change the brightness of the parent unit screen from **Level 1** to **Level 5**. The LCD brightness is preset to **Level 3**.

- Press **MENU** when the parent unit is idle.
- Press **◀** or **▶** to choose , then press **▲**.
- Press **▼** or **▲** to choose the desired level of brightness, then press **MENU** to confirm your selection.

Monitoring mode

Every time the parent unit is turned on, it displays a baby unit in **SINGLE-CAM** mode. If there are more two baby units in your system, you can also monitor your baby in **PATROL** mode.

SINGLE-CAM	The screen displays image of a single baby unit in full screen.
PATROL	A single cam view that transits to a different baby unit every 10 seconds.

Change monitoring mode

To change the monitoring mode from SINGLE to PATROL mode:

- Press **MENU** to enter the main menu.
- Press **◀** or **▶** to choose , then press **▲** to open the submenu.
- Press **▲** or **▼** to select to enter **PATROL** mode to alternately view the image from one baby unit to the next one in every 10 seconds.

To change the monitoring mode from PATROL to SINGLE mode:

- Press **MENU** to enter the main menu.
- Press **◀** or **▶** to choose , then press **▲** to open the submenu.
- Press **▲** or **▼** to select a camera number to enter **SINGLE** mode.

NOTE

- If one or more paired baby units are powered off or disconnected during patrolling, the parent unit will keep searching until its power has run out or a baby unit is connected once again

Screen off timer

You can set the screen off time for the parent unit so that the screen will be automatically turned off after it is idle for a specific time interval. When the screen is turned off, you can still hear sound from the baby unit.

- Press **MENU** to enter the main menu when the parent unit is idle.
- Press **◀** or **▶** to choose , then press **▲** to open the submenu.
- Press **▼** or **▲** to choose the desired time period to automatically turn off screen (- 5 min./ - 30 min./ - 60min.), then press **MENU** to confirm your selection and return to idle screen.

VOX (sound-activated) sensitivity

You can choose to hear sounds from the baby unit all the time, or to hear sounds that exceed a designated level. You can use the parent unit to adjust the microphone sensitivity of your baby unit. The higher the VOX sensitivity level, the more sensitive the baby unit is in detecting sounds for transmitting to the parent unit. The VOX sensitivity level is preset to the highest level (Level 5).

