

QUICK SETUP GUIDE

114" Inflatable Outdoor Screen

NS-SCR117

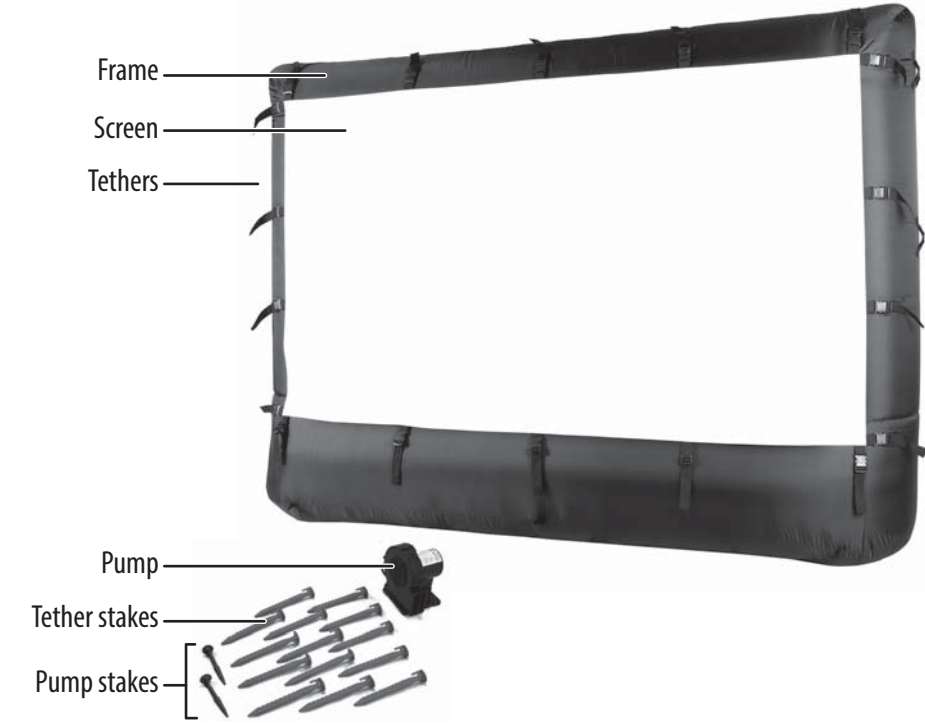
PACKAGE CONTENTS

- Projector screen
- Inflatable frame
- Pump
- Tether stakes (14)
- Tethers (4 long, 4 short)
- Pump stakes (2)
- Storage bag
- Quick Setup Guide

YOU'LL NEED

- Hammer
- Projector
- Sound system (Built-in projector speakers may not provide loud enough audio outdoors.)

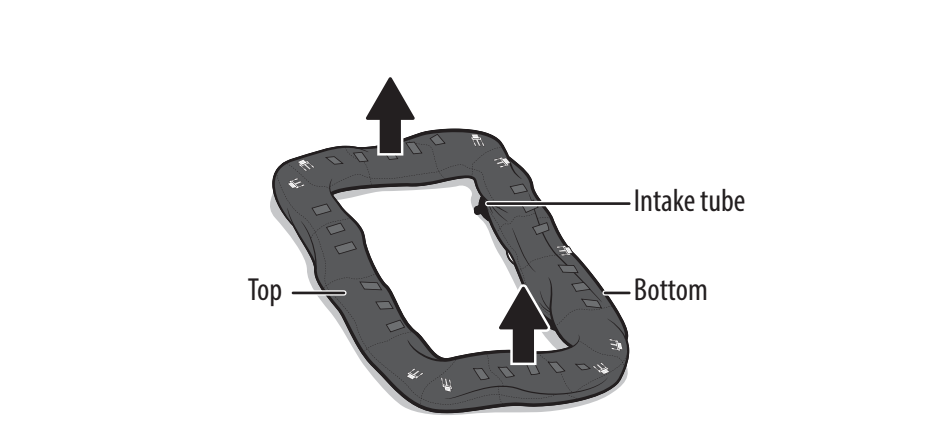
FEATURES



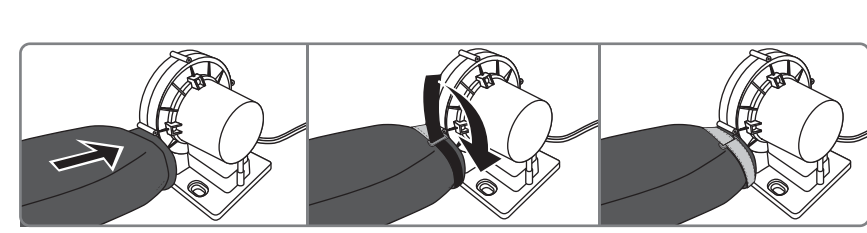
SETTING UP YOUR SCREEN

Attaching the pump

- 1** Lay the screen on top of the deflated frame with the white side up.
- Note:** Select a location where the pump is well-ventilated and the power cord can reach a power outlet.

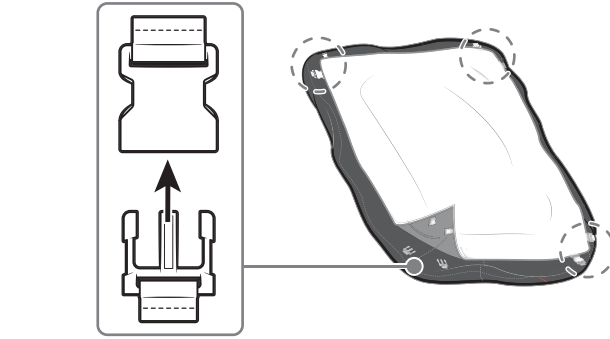


- 2** Align the intake tube on the back of the frame with the mouth of the inflator pump, then wrap the attached strap around the mouth of the pump and attach tightly.



Attaching the screen

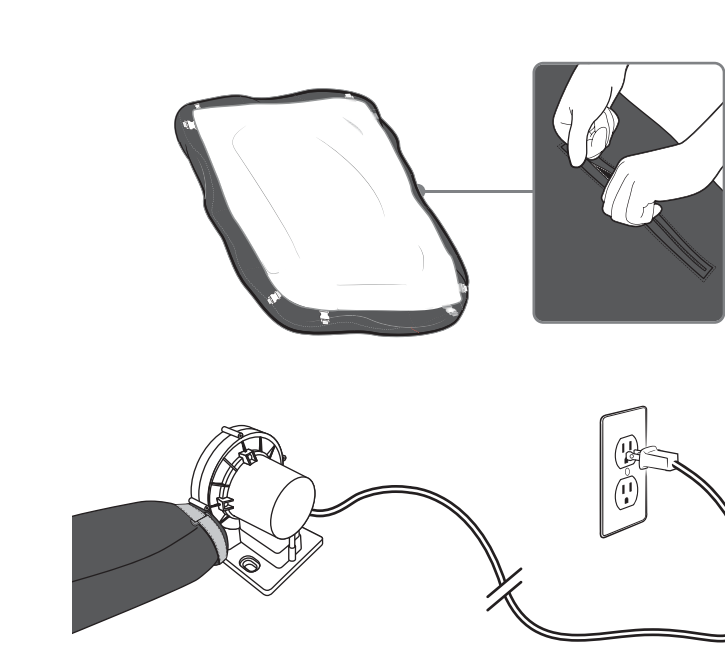
- Connect the clips along the edges and corners of the frame to the screen.



Inflating the screen

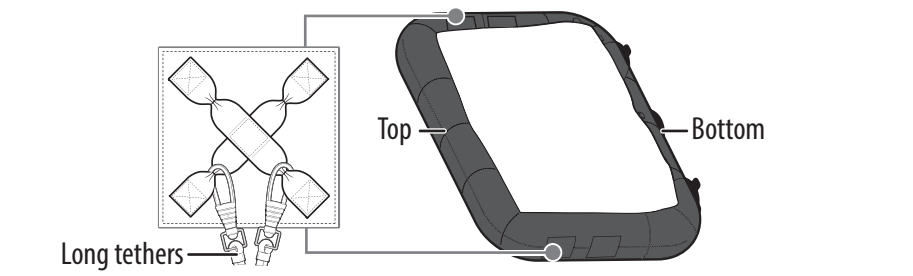
After making sure that the air intake is clear of obstructions and the frame's zipper is closed completely, plug the pump's power cord into a power outlet. The pump turns on automatically.

Note: The pump must be left running while screen is in use.

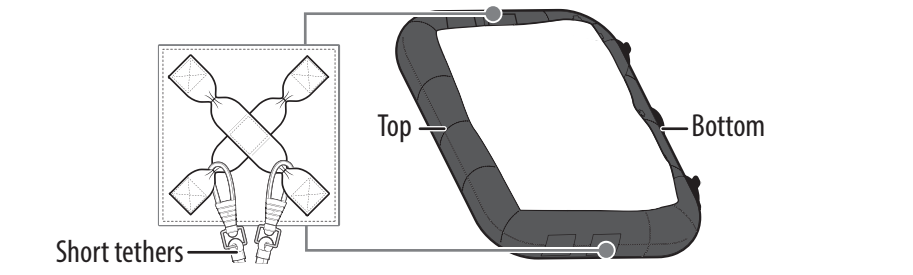


Setting the screen upright

- 1** Attach the four long tethers to the upper X-shaped straps on each side of the frame (two on each side).



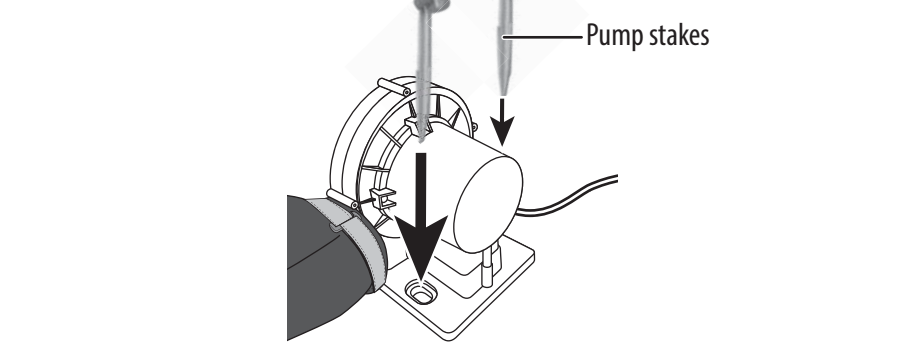
- 2** Attach the four short tethers to the lower X-shaped straps on each side of the frame (two on each side).



- 3** Stand the inflatable screen upright, then insert the yellow tether stakes through the tethers and use the hammer to pound them into the ground. Make sure that the tethers are taut.



- 4** Insert the two orange pump stakes through the plastic legs of the pump, use the hammer to pound them into the ground, to secure the pump to the ground.



USING YOUR SCREEN

- Aim your projector at the front of the screen. The screen is not intended for rear projection.
- You can run the pump continuously. However, turn the pump off when leaving it unattended.

Weather restrictions

- You can use your screen in light weather conditions like gentle rain or snow. Use during extreme weather conditions isn’t recommended.
- Do not use in temperatures below 14°F (-10°C).
- Do not use in winds higher than 20 mph (32.2 km/h).

STORING YOUR SCREEN

- 1 Unplug the pump and open the zipper (in the back near the bottom) to deflate your screen.
- 2 Disconnect the air intake tube from the pump.
- 3 Remove the stakes from the ground and unclip the tethers.
- 4 Unclip the screen from the frame.
- 5 Carefully fold the frame and screen and store them in the included carrying case.

MAINTAINING YOUR SCREEN

Frame

- Check the product at regular intervals for any signs of damage or deterioration. Damage or deterioration could cause the product to become unstable and a significant safety hazard.
- If any part is damaged or deteriorated, stop use and contact the manufacturer.
- Regularly check the condition of the ground stakes that hold the screen in place. Damage to or deterioration of the stakes could result in the screen becoming unstable and could result in serious injury.

Screen

- Wipe the screen with a dry or damp cloth. Use only water or a neutral, inflammable, nontoxic cleaning and sanitizing solution.
- If water has soaked the screen, move it to a dry location, then plug in the pump. The fan will dry your screen.
- If the inflatable frame is covered in a light dusting of snow, re-inflation should not harm it. However, if it has been subjected to a large amount of snow or ice, do not re-inflate it. Instead, carefully remove the screen from the extreme conditions (for example, bring it indoors) and allow it to thaw before re-inflating. This helps prevent cracks in the material. Do not use in temperatures below 14°F (-10°C).
- Check the screen regularly for holes or other damage. DO NOT use a damaged product. Use of a damaged product could result in injury.

Pump

- Do not clean the pump with a chemical solution as this may damage the coating and plastic parts. Never clean the pump in water.
- Use a dry cloth to clean the foot holes and remove debris after each use.
- Store the pump in a dry, indoor place that is out of the reach of children.
- Regularly check the condition of the pump stakes. Damage to or deterioration of the stakes could result in the pump becoming unstable which could result in serious injury.
- Regularly check the condition of the pump’s power cord. Damage to or deterioration of the cord could cause a serious electrocution hazard. If the cord is damaged or deteriorated, immediately discontinue use of the pump and contact the manufacturer. To keep the power cord in good condition, hand-support the product when carrying. Do not twist the cord.

TROUBLESHOOTING

The frame will not inflate.

- Make sure that the pump is connected to a working power outlet. The pump must stay on for the frame to stay inflated.
- The zipper that seals the inflatable may not be completely closed. Make sure that the zipper is closed.
- The air-intake area may become clogged with grass, leaves, or other debris. For best results, check this area and remove any debris.
- The hanging fabric of a partially-inflated frame can become attached to the motor’s air intake area. Make sure that that fabric is not hanging near the motor during inflation.
- Check for rips in the fabric. You can hand sew rips with any type of thread or cover the tear with clear packing inflatable screen tape.
- Make sure that the connection between the inflatable and fan is secure.

The frame is torn.

- You can hand sew rips with any type of thread or cover the tear with clear packing tape.

The frame deflates after unplugging the pump.

- This is normal. The screen will not stay inflated unless the pump is turned on.

SPECIFICATIONS

- Dimensions (inflated)(H × W × D): 83 × 115 × 25 in.
(210.8 × 292.1 × 63.5 cm)
- Weight: 25 lbs. (11.3 kg)
- Electrical rating: 110-120V AC, 60 Hz, 0.8A

SAFETY INFORMATION

READ ALL INSTRUCTIONS BEFORE ASSEMBLING THIS INFLATABLE DEVICE AND
KEEP INSTRUCTIONS FOR FUTURE USE.
FAILURE TO FOLLOW THESE WARNINGS AND INSTRUCTIONS CAN RESULT IN
SERIOUS INJURY OR DEATH TO USERS, ESPECIALLY CHILDREN.

WARNING

- Keep children in your direct sight, stay close, and actively supervise them when they are near this inflatable. Assign an adult to supervise the inflatable.
- Empty the inflatable or prevent access to it when not in use.
- Store the empty inflatable in a way that it does not collect water.
- Do not use in winds more than 20 mph.

Electrocution Risk:

- Keep all electrical lines, radios, speakers, and other electrical appliances away from the inflatable.
- Do not place the inflatable near or under overhead electrical lines.
- Do not use extension cords with this product.

PUMP WARNINGS:

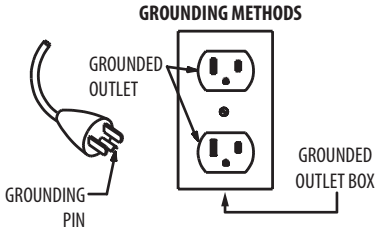
This product is only to be used for inflating the inflatable projector screen.
Household Use Only.

- Electrical current requirements: 110-120VAC/60Hz
- The power supply to the pump should include a grounding plug.
- The power cord to the pump should be clearly marked, so that persons using lawn mowers or other types of equipment are aware that there is a cord on the ground.
- The pump should never be left unattended when in use. The pump is not to be used by children.
- No objects should cover the air intake when the pump is in use. Sand, small stones, or other objects should not be allowed to be sucked into the pump.
- Under no circumstances should a finger or any sharp object be inserted into the air intake.
- The power supply to the pump should not be exchanged for any other type of supply. If the power supply is damaged, it should be repaired by a technician.
- To avoid the danger of electrical shock, do not immerse the pump in water.
- Do not use extension cords as this would present an electrocution hazard.
- Do not leave the pump exposed to strong sunlight.
- Operation of the pump is not recommended for children under 14 years of age. As with all electric products, precautions should be observed during handling and use to prevent electric shock.
- Children should not touch the pump. Children must not play on the product.
- Children should not attach foreign objects to the pump that are not specifically designed for use with the pump, such as, but not limited to jump ropes, clothesline, pet leashes, cables, and chains as they may cause a strangulation hazard.
- Sudden gusts of wind may lift the inflatable off of the ground.
- Pumps and electrical cords should be kept out of reach.
- To avoid electrical shock, never plug in or unplug the pump with wet hands.
- The power supply should be disconnected if the pump or the inflatable needs to be moved.

- To reduce the risk of fire or electric shock, do not use this pump with any solid-state speed control device.
- Do not operate the pump with a damaged cord or plug. Discard pump or return to an authorized service facility for examination and/or repair.
- Do not run the cord under carpeting. Do not cover cord with throw rugs, runners, or similar coverings. Do not route cord under furniture or appliances.

Grounding instructions:

- This product should be grounded. In the event of an electrical short circuit, grounding reduces the risk of electric shock by providing an escape wire for the electric current. This product is equipped with a cord containing a grounding wire with an appropriate grounding plug. The plug must be plugged into an outlet that is properly installed and grounded in accordance with all local codes and ordinances.
- DANGER – Improper installation of the grounding plug can result in a risk of electric shock. If repair or replacement of the cord or plug is necessary, do not connect the grounding wire to either flat blade terminal. The wire with insulation having a green outer surface with or without yellow stripes is the grounding wire.
- Check with a qualified electrician or serviceman if the grounding instructions are not completely understood or if in doubt as to whether the product is properly grounded. Do not modify the plug provided. If it will not fit the outlet, have the proper outlet installed by a qualified electrician.
- This product is for use on a nominal 120V circuit and has a grounding plug similar to the plug illustrated. Only connect the product to an outlet having the same configuration as the plug. Do not use an adapter with this product.



ONE-YEAR LIMITED WARRANTY

Visit www.insigniaproducts.com for details.

CONTACT INSIGNIA:

For customer service, call 1-877-467-4289 (U.S. and Canada) or 01-800-926-3000 (Mexico) www.insigniaproducts.com

INSIGNIA is a trademark of Best Buy and its affiliated companies.
Distributed by Best Buy Purchasing, LLC
7601 Penn Ave South, Richfield, MN 55423 U.S.A.
©2018 Best Buy. All rights reserved.
Made in China