

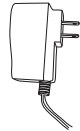


Please visit our website at [www.NightOwlISP.com](http://www.NightOwlISP.com) for all manuals, software, and firmware updates. There are also How-To videos with step-by-step instructions for connecting your device.

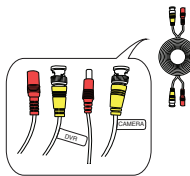
### BEFORE YOU GET STARTED YOU WILL NEED



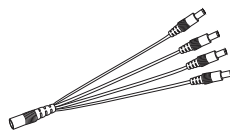
Camera



Camera Power Adapter



Video/Power Cables



Power Splitter

### WATCH THE VIDEO



[www.NightOwlISP.com/dvr-qsg](http://www.NightOwlISP.com/dvr-qsg)

### CONNECTING CAMERAS TO YOUR DVR

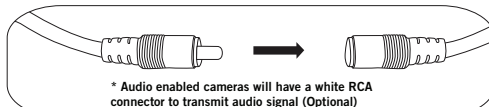
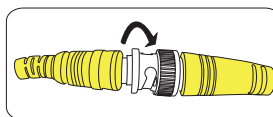
**NOTE:** Connect and TEST the cameras with the DVR before mounting to ensure that they work properly.

①

Video/Power Cable



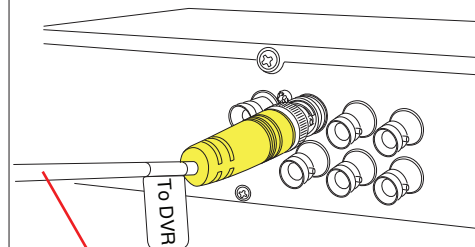
Camera



\* Audio enabled cameras will have a white RCA connector to transmit audio signal (Optional)

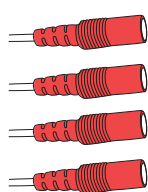
②

AHD10 DVR

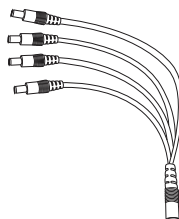


If the camera's video quality either day or night is degraded, you may need to change the cable run from the camera to the DVR. This system is designed to work with 24AWG cabling or better.

③

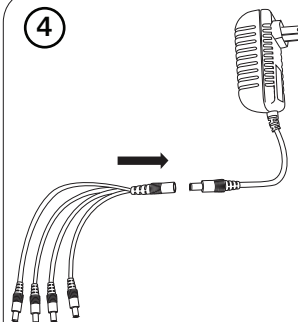


Camera

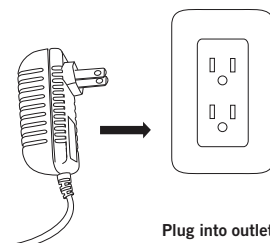


Splitter

④



⑤

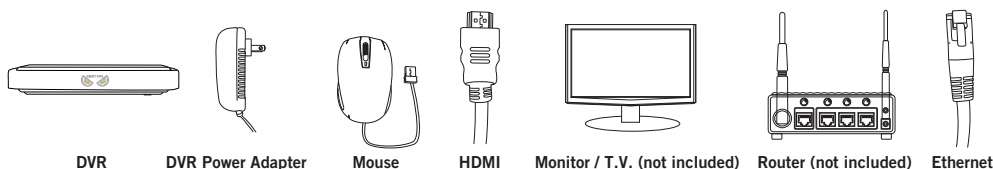


Plug into outlet



Please visit our website at [www.NightOwlISP.com](http://www.NightOwlISP.com) for all manuals, software, and firmware updates. There are also How-To videos with step-by-step instructions for connecting your device.

### BEFORE YOU GET STARTED YOU WILL NEED



DVR

DVR Power Adapter

Mouse

HDMI

Monitor / T.V. (not included)

Router (not included)

Ethernet

### STARTUP WIZARD

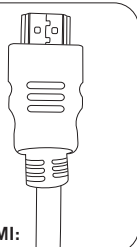


Scan the QR Code for video instructions on how to use the Startup Wizard and configure your DVR.

[www.NightOwlISP.com/startup-wizard-qsg](http://www.NightOwlISP.com/startup-wizard-qsg)

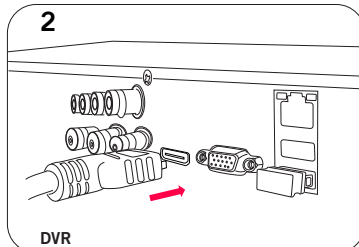
### CONNECTING THE DVR TO A MONITOR / T.V.

1



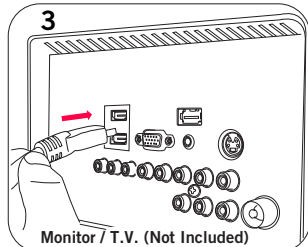
Using HDMI:

2



DVR

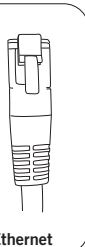
3



Monitor / T.V. (Not Included)

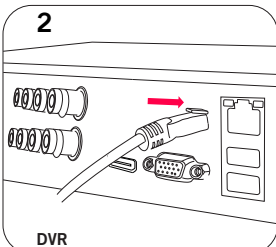
### CONNECTING YOUR ROUTER

1



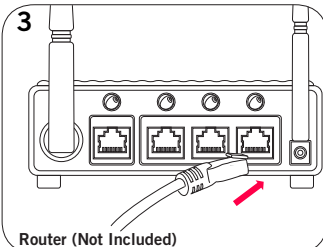
Ethernet

2



DVR

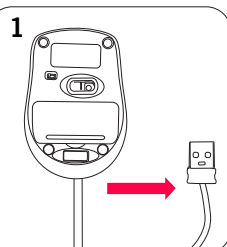
3



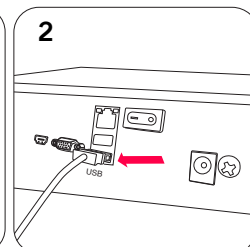
Router (Not Included)

### CONNECTING THE MOUSE

1



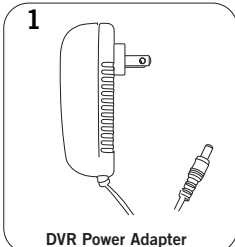
2



USB

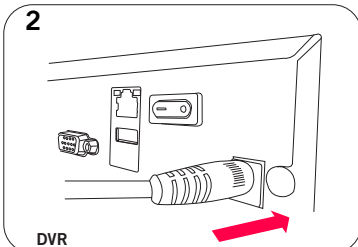
### POWERING YOUR DVR

1



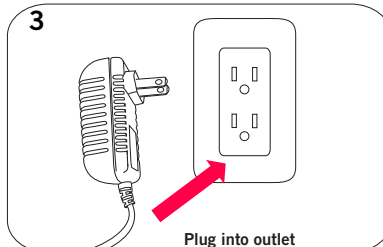
DVR Power Adapter

2



DVR

3



Plug into outlet

### SCAN THE QR CODE TO ACCESS VIDEO INSTRUCTIONS FOR OUR MOBILE APP SETUP



Please scan the QR code to access our instructional video which will guide you through downloading and configuring your Night Owl HD App



[www.NightOwlISP.com/mobile-app-qsg](http://www.NightOwlISP.com/mobile-app-qsg)