

Precision. Clarity. Power.

Experience the cutting-edge prowess of PTZOptics Move SE, boasting 1080 60fps auto-tracking, simultaneous outputs, and versatile control options. Seamlessly integrate with leading video production software like OBS, vMix, and Wirecast for an unparalleled live streaming experience.



12x 30x  
20x  
Models



**Auto-Tracking:** Easy to use auto-tracking, perfect for education, conferences, live broadcasts, and more.

**Multiple Control Options:** IR remote, network connection, RS-232, RS-485, Web UI, PTZ Control App, USB port, and Camera Management Platform.

**Simultaneous Outputs:** HDMI, SDI, NDI, USB, IP

**1080p Full HD:** Next generation SONY UHD CMOS sensor for shooting high-quality 1080p video at 60 FPS. Adjustable to numerous other resolutions and frame rates.

**Simple Network Discovery:** Easily discover and connect to a network.



## What's in the Box:

Move SE Camera  
AC Power Supply  
USB A-C Cable

RS232C Cable  
Quick Start Guide  
IR Remote

2 AA Batteries  
Lens Cap

## Camera & Lens

<b>Models (GY = Gray, WH = White)</b>	PT12X-SE-GY-G3 PT12X-SE-WH-G3	PT20X-SE-GY-G3 PT20X-SE-WH-G3	PT30X-SE-GY-G3 PT30X-SE-WH-G3
<b>Lens</b>	<p><b>(12X)</b> Sony 1/2.8 inch, CMOS</p> <p><b>(20X)</b> Sony 1/2.8 inch, CMOS</p> <p><b>(30X)</b> Sony 1/2.8 inch, CMOS</p>		
<b>Image Sensor</b>	2.13MP, Effective Pixels: 2.07MP		
<b>Resolution and Frame Rate</b>	<p><b>HDMI/SDI/IP/USB Type C:</b></p> <p>1920x1080p-60/59.94/50/30/29.97/25</p> <p>1280x720p-60/50</p>		
<b>Optical Lens Focal Length (Zoom)</b>	<p><b>(12X)</b> f = 4.1mm ~ 49.2mm, F1.8 ~ F2.68</p> <p><b>(20X)</b> f = 4.42mm ~ 88.5mm, F1.8 ~ F2.8</p> <p><b>(30X)</b> f = 4.42mm ~ 132.6mm, F1.8 ~ F2.8</p>		
<b>Maximum Tracking Distance</b>	<p><b>(12X)</b> 60ft (20m)</p> <p><b>(20X)</b> 100ft (33m)</p> <p><b>(30X)</b> 120ft (40m)</p>		

<b>Field of View</b>	<b>(12X)</b> H 6.9° ~ 72.5°   V 3.9° ~ 44.8°
	<b>(20X)</b> H 3.5° ~ 60.7°   V 1.9° ~ 34.1°
	<b>(30X)</b> H 2.3° ~ 60.7°   V 1.28° ~ 34.1°
<b>Display Field of View</b>	<b>(12X)</b> 85.2
	<b>(20X)</b> 69.6
	<b>(30X)</b> 69.6
<b>Min Lux</b>	0.5 Lux @ (F1.8, AGC ON)
<b>Shutter</b>	1/30s ~ 1/10000s
<b>Pan Movement Range</b>	±170°
<b>Tilt Movement Range</b>	-30° ~ +90°
<b>Pan Speed</b>	0.7°/s ~ 100°/s
<b>Tilt Speed</b>	0.7°/s ~ 69.9°/s
<b>Presets</b>	255 Presets
<b>Preset Accuracy</b>	0.1°
<b>Image Flip, Mirror, and Freeze</b>	Supported
<b>UVC Protocol</b>	1.1

### Physical Specifications

<b>Material</b>	Aluminum, Plastic
<b>Color</b>	Gray, White
<b>Dimensions (W x D x H)</b>	<b>(12X)</b> 5.6" W x 6.7" D x 7.88" H / 142 W x 169 D x 189 H mm
	<b>(20X)</b> 5.6" W x 6.7" D x 7.88" H / 142 W x 169 D x 189 H mm
	<b>(30X)</b> 5.6" W x 6.7" D x 7.88" H / 142 W x 169 D x 189 H mm
<b>Weight</b>	<b>(12X)</b> 3.25 lbs (1.47 kg)
	<b>(20X)</b> 3.0lbs (1.36 kg)
	<b>(30X)</b> 3.0lbs (1.36 kg)

<b>Working Environment</b>	Indoor
<b>Humidity Range</b>	10% - 80%
<b>Operating Temperature</b>	14°F ~ 104°F (-10°C ~ 40°C )
<b>Storage Temperature</b>	-40°F ~ 140°F (-40°C ~ 60°C)
<b>Connections</b>	
<b>HD Video Output</b>	1x RJ45: 10/100/1000M Adaptive Ethernet Port   NDI HX3 enabled
	1x HDMI: version 1.3
	1x 3G-SDI: BNC type, 800mVP-p, 75Ω, Along to SMPTE 424M, standard
	1x USB 3.0 Type C
<b>Compression Standards</b>	H.264, H.265, MJPEG
<b>Audio Interface</b>	1x 3.5mm Line level Input
<b>Communication Interface</b>	1x 8-pin Mini DIN RS232 Input, Max distance: 98.5ft / 30m, Protocol: VISCA / Pelco-D / Pelco-P
	1x 8-pin Mini DIN RS232 Output, Max distance: 98.5ft / 30m, Protocol: VISCA / Pelco-D / Pelco-P
	1x 2-pin Phoenix port RS485 Input / Output, Max distance: 3,937ft / 1200m, Protocol: VISCA / Pelco-D / Pelco-P
<b>IR</b>	4x IR Addresses, Max distance 30ft / 9m
<b>Power Supply</b>	JEITA type (DC IN 12V) / PoE (802.3af)
<b>Current Consumption</b>	Max 2.0A

NDAA Compliant



Covered by one or more claims of the HEVC patents listed at [patentlist.accessadvance.com](http://patentlist.accessadvance.com).

PTZOptics cameras support HIPAA compliance (§164.310, §164.312(a)-(e), §164.308, §164.530) via RBAC, encrypted video, Privacy Mode, audit logs, and secure deployment for telehealth and patient safety.

Made in China or Laos

# Pan Tilt Zoom Cameras



[Move 4K](#)



[Link 4K](#)



[Move SE](#)

## Box Cameras

## Joysticks



[Studio Pro](#)



[Studio SE](#)  
Coming soon



[Studio 4K](#)



[SuperJoy](#)



[PTJOY](#)



[HCJOY](#)

## Camera Mounts

### Wall Mounts

### Ceiling Mounts

### Pole Mounts



[HCM-1-BK](#)  
[HCM-1-WH](#)



[HCM-2-BK](#)  
[HCM-2-WH](#)



[PT-WM-3-BK](#)  
[PT-WM-3-WH](#)  
For  
30X Models



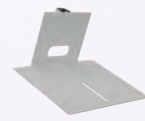
[PT-CM-1-BK](#)  
[PT-CM-1-WH](#)



[PT-CM-3-BK](#)  
[PT-CM-3-WH](#)



[HCM-1C-WH](#)



[HCM-2C-WH](#)



[PT-PM-3-WH](#)  
For  
30X Models

## Software



[Hive Studio](#)



[PTZOptics  
Q-SYS Control  
Plugin](#)

[Camera  
Management  
Platform](#)



[PTZ  
Control Pro 2](#)

[Click here to see our full list of  
\*\*Integration Partners\*\*](#)