



arlo™

Arlo Baby
Quick Start Guide



Welcome

Thank you for choosing Arlo Baby.
Getting started is easy.

What's Included



Arlo Baby camera



USB power cable



USB power adapter
(varies by region)



Quick Start Guide



Wall-mount plate



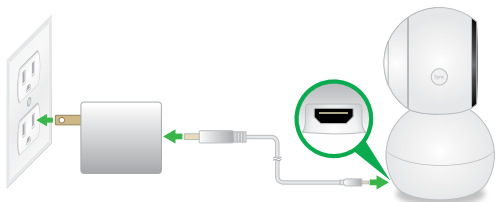
Mounting screws

Plug In Your Camera

Connect one end of the USB power cable to the port on the camera.

Plug the other end of the USB cable into the power adapter.

Plug the USB power adapter into a wall socket and wait for the camera LED to blink amber.



Caution: You must use an Arlo Baby power cable and adapter to charge the camera battery. Do not try to power the camera or charge the camera battery with any power adapter other than the one provided with the Arlo Baby camera.

Get the App

For the best experience, download the Arlo app for your smartphone by scanning this QR code or searching for Arlo in the app store.



arlo.netgear.com



Note: If you already use the Arlo app, make sure that you are using the latest version. To find out if an update is available, go to the App store and search for Arlo.

Get a New Account or Log In

➤ To create a new Arlo account:

1. Launch the Arlo app from your smartphone, tap **New to Arlo?**, and select **Arlo Baby**.

If you are using a computer, visit arlo.netgear.com.

2. Follow the onscreen instructions.

➤ To add an Arlo Baby camera to an existing Arlo account:

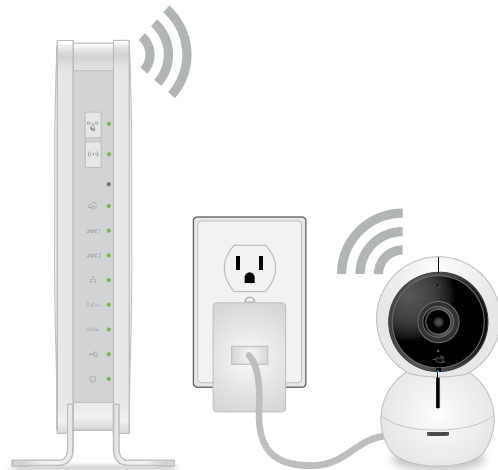
1. If you already set up an Arlo account, log in and click or tap **Add Device**.
2. Follow the onscreen instructions.

Note: For information about the camera LED colors, visit support.arlo.com and scroll down to select the user manual.

Connect Your Camera

Follow the onscreen instructions either in the Arlo app or on a computer to connect your camera to your router.

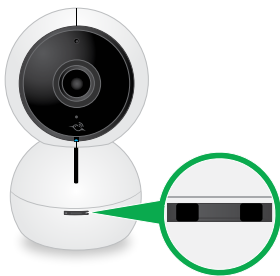
Note: If you own an Arlo Wire-Free system, do not connect your Arlo Baby camera to the Arlo base station.



Place Your Camera

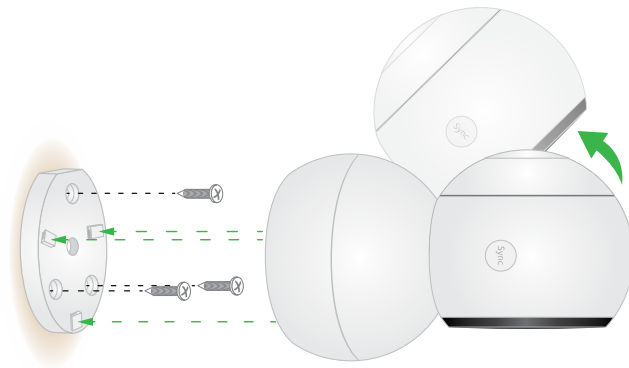
You can place your camera on a shelf or other flat surface, or you can mount it on the wall.

Note: Do not cover or obstruct the inlet holes for the sensors.



STRANGULATION HAZARD – Children can STRANGLE in cords. Keep the cord out of the reach of children (more than 3 feet (.9 meters) away).

If you are mounting the camera on a wall, place the wall plate and secure it with the included screws.



Align the wall plate with the holes on the base of the camera and rotate the base until it snaps into place.

Use Arlo Baby's tilt and swivel functions to position the camera so that it captures the area that you want to monitor.



You're Done!

Congratulations! Your Arlo Baby camera is set up and ready to go.

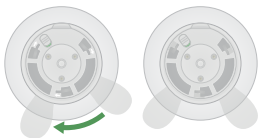
To view useful tutorial videos, find troubleshooting tips, or get support, visit support.arlo.com.

To set up and pair your camera with HomeKit, follow the instructions in the Arlo app. See the back panel of this guide for the setup code.

Arlo Baby Characters

Your Arlo Baby camera might come with a character set. You can remove the character set altogether or replace it with other Arlo Baby characters.

- Pull the character ears up to remove them.
- To install character ears, align the ears with the camera lens and press them onto the camera.
- Rotate the character feet and pull them off to remove them.
- To install character feet, align the foot plate with the holes on the bottom of the camera and rotate the foot plate until it clicks into place.

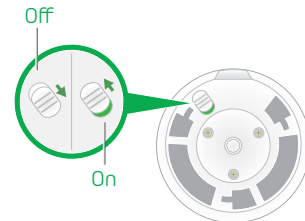


Arlo Baby Features

➤ Rechargeable Battery

Your Arlo Baby camera includes a built-in rechargeable battery and can work for several hours at a time without being plugged in. You can place the camera in locations where you cannot connect it to a power outlet.

Use the switch on the bottom of the camera to power the Arlo Baby camera's battery off. The camera's battery is on when the green color is visible.



If the camera is unplugged and you don't want the battery to lose its charge, set the switch to off.

➤ **Night Light**

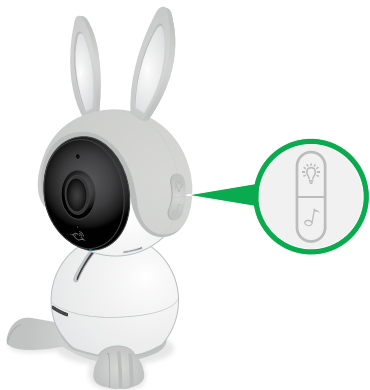
Use the app or the top button on the right side of the camera to turn the night light on and off.

➤ **Music**

Use the app or the bottom button on the right side of the camera to play and pause music.

➤ **Local Streaming**

Enjoy minimal video lag by connecting your mobile device to the same WiFi network (SSID) as the one Arlo Baby is connected to.



©NETGEAR, Inc., NETGEAR, the NETGEAR Logo, and Arlo are trademarks of NETGEAR, Inc.

Use of the Works with Apple HomeKit logo means that an electronic accessory was designed to connect specifically to iPod touch, iPhone, or iPad, respectively, and is certified by the developer to meet Apple performance standards. Apple is not responsible for the operation of this device or its compliance with safety and regulatory standards.

Compliance For the current EU Declaration of Conformity, visit kb.netgear.com/app/answers/detail/a_id/11621/.

For regulatory compliance information, visit netgear.com/about/regulatory/.

NETGEAR®

350 East Plumeria Drive
San Jose, CA 95134, USA



NETGEAR INTL LTD

Building 3, University Technology Centre
Curraheen Road, Cork, Ireland



201-22232-01

July 2017

Apple HomeKit setup code