

Congratulations on your purchase of a high-quality Insignia product. Your new digital picture frame represents the state of the art in digital picture frame design and is designed for reliable and trouble-free sharing of your memories.

Package contents

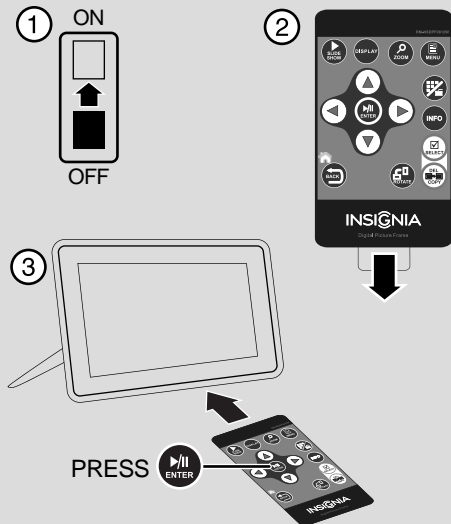
- Digital picture frame
- AC power adapter
- Remote control with battery (CR2025)
- Cleaning cloth
- USB cable
- User Guide
- Quick Setup Guide

ATTENTION: DISABLE DEMO MODE!

Your frame comes with a store demo mode enabled by default.

To disable store mode and enable buttons:

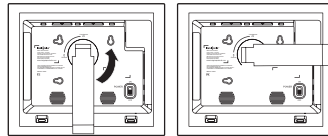
- 1 Turn the frame on.
- 2 Remove the remote control battery tab.
- 3 Point the remote control at the frame and press **ENTER** on the remote.



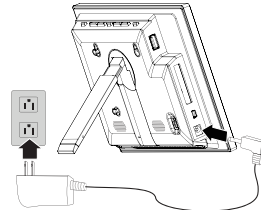
1 Set up your digital picture frame

Setting up the frame

- 1 Pull out the stand to set the frame in landscape orientation.
- 2 Turn the stand counterclockwise 90° if you want to set the frame in portrait orientation.



- 3 Extend the stand from the back of the frame, then place the frame on a flat surface. Gently push or pull on the stand to change the frame's viewing angle.
- 4 Plug the AC power adapter into the frame's DC power connector and into an AC power outlet.



- 5 Slide the power switch to the **On** position. The frame will turn on and automatically start playing a slide show of the pictures stored in internal memory. This slide show is called Demo mode.
 - 6 Remove the plastic tab that extends past the bottom edge of the remote control. This tab protects the battery. The remote control will not work until it is removed.
- For more information on using the remote control, see your *User Guide*.



- 7 To turn off Demo mode, point the remote control at the front of the frame and press **ENTER**.

2 Start your slide show

Viewing pictures on a memory card or USB memory device

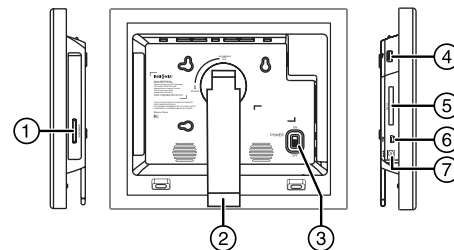
Insert a memory card or USB memory device into the memory card slot or the USB port. The frame will immediately begin loading a slide show of pictures from the memory card or USB memory device.

Caution: Memory cards fit into the card slots in only one direction. The label side of the card should face the screen. Do not force a memory card into a slot. The card should fit snugly when inserted correctly.

Some cards require an adapter to fit correctly. For more information on supported memory cards, see "Specifications" in the *User Guide*.

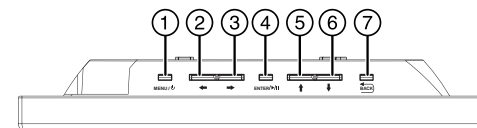
For more information about using your digital picture frame, see your *User Guide*.

Sides and back



#	DESCRIPTION
1	Memory card slot (SD/SDHC/MMC/Memory Stick/xD) (Memory Stick Pro Duo/microSD require an adapter - not included)
2	Adjustable stand
3	Power On/Off switch
4	USB (type A) port
5	Remote control storage slot
6	USB (type Mini B) port
7	DC 5 V power connector

Top



#	BUTTON	DESCRIPTION
1	MENU/⏻	Menu / Standby—Press to open the menu. Press and hold down for 2 seconds to put the frame into Standby mode.
2	←	Left arrow—Press to move the menu selection left or to display the previous picture.
3	→	Right arrow—Press to move the menu selection right or to display the next picture.
4	ENTER/▶/⏸	Enter/Play/Pause—Press to select menu items. During a slideshow, press to pause or resume.
5	↑	Up arrow—Press to navigate up.
6	↓	Down arrow—Press to navigate down.
7	⏮	Back button—Go back to the previous selection or screen.

Six-month limited warranty

Visit www.insigniaproducts.com for details.

Contact Insignia:

For customer service, call 1-877-467-4289
www.insigniaproducts.com

© 2012 BBY Solutions, Inc., Inc. All rights reserved.
INSIGNIA is a trademark of BBY Solutions, Inc. Registered in some countries. All other products and brand names are trademarks of their respective owners.