



## SC-580DC User Manual



1

### Product Structure



1. Power key
2. Up key
3. Down key
4. M key
5. Ok key
6. Cabin IR key
7. Cabin lens
8. IR light
9. Reset hole
10. Mic
11. TF slot
12. Rearcam jack
13. Power jack
14. Front lens
15. Suction mount
16. Speaker

#### 1. Power key

Long press this button can turn on/off the machine.

#### 2. Up key

Function 1: in the menu choose function according to [UP].

Function 2: in recording mode, short press [UP] to switch different view of lens.

#### 3. Down key

Function 1: in the menu choose function according to [DOWN]

#### 4. Menu key

press menu button to enter video menu setting under standby mode, under setting mode, you can select the options by [UP] and [Down] key, press [OK] to enter the options, short press [menu] will exit.

#### 5. OK button

Function 1: Start / stop video recording

2

In standby mode, short press [OK] to start recording, short press [OK] again to stop recording.

Function 2: Camera

In photo mode, short press [OK] to perform taking pictures

Function 3: file playback function

In playback mode, short press [OK] can perform the play / stop video.

Function 4: confirm the function

Menu, set menu, pictures, the video playback menu option to set the operation to save to perform an action.

Press menu button to enter video menu setting under photo mode, under photo setting mode, you can select the options by UP and Down button, press OK to enter the options, short press menu will exit.

Press mode button to switch model of capture.

Press menu button to choose delete/protect files.

#### 6. Cabin IR key

Short press for switch on/off night vision of cabin lens. Please switch it on at night.

#### 7. Cabin lens

Shoot inside of car.

#### 8. IR light

Infrared light of cabin lens

#### 9. Reset hole

Pin this hole for reboot if the device is frozen.

#### 10. Mic

Audio recording.

#### 11. TF slot

Need micro SD memory card, maximum 128GB.

#### 12. Rearcam jack

For connect rear cam only.

#### 13. Power jack

Type C port for power supply.

#### 14. Front lens

Front camera for shooting front of car.

#### 15. Suction mount

For installation, suction on the windshield.

#### 16. Speaker

Buttons sound, playback video usage.

### System setting

**Resolution:** it defaults 1080P.

**Loop recording:** setting the video period, it defaults 1min.

**Exposure:** -2.0 to +2.0, it defaults 0.

3

**Motion detection:** In standby mode, the recorder detects movement and records automatically. It defaults off.

**Record audio:** It defaults off.

**Data stamp:** It marks data and time information in the video.

**G-sensor:** off / high / middle / low, it defaults off. We suggest that you can setting it at middle level.

**Park mode:** After parking, the car monitors the vibration to record automatically. It defaults off.

**Date and time:** Setting the data and time.

**Automatic shutdown:** Camera will not auto off when camera is not in recording and other operations. It defaults off.

**Screen saver:** off / 1 / 2 / 3 minutes, it defaults off.

**Beep sound:** 0/1/2/3, setting the volume of speaker.

**Language:** English, Traditional Chinese, Simplified Chinese, Japanese, French, Spanish (default English)

**Frequency:** 50 Hz/ 60Hz

**Format:** cancel / OK, for format the memory card.

**Default setting:** cancel / OK, resetting the device.

**Version:** Firmware version.

### Playback mode

Long press the M key under standby mode for enter browse.

#### 1. Browse the file:

Playback is browse by document type, respectively, when the file type is video, simply look at the video file, for the image, can only view pictures.

#### 2. Remove and protection

In playback mode, press M button to turn into menu, and choose to lock to delete and protect option, press ok to enter delete current delete all option, press ok to enter, press ok to determine again. Before you can enter the lock to a file, unlock can not delete, protect some important information.

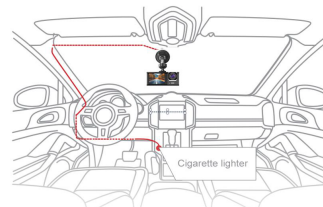
### Installation

Plug the bracket into bracket hold on the top of dashcam, move to the right to lock.

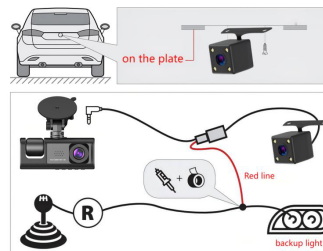
4



As shown in the picture, this is considered the most appropriate installation. It does not block the driver's field of view, will not distract the driver's attention. Please clear the windshield before installation.



Fix the rear camera above the license plate or on the rear windshield. The red line needs to be connected to the reversing light, reversing to trigger the back image (this can be operated as needed, and it is not necessary to do so).



5

### Whole Package

- 1\*Dashcam
- 1\*Mounting bracket
- 1\*Car charger
- 1\*Rear camera
- 1\*Manual

### Specification

Chipset	GP6248
Lens	Front 2MP cabin 0.3MP rear 0.3MP
Wide angle	Front 120°cabin 90°rear 90°
Display	2.0inch IPS
Speaker	Built-in
Microphone	Built-in
G-sensor	Built-in
Car power DC input	12V~24V
Battery	Lithium polymer 150mAh
Video resolution	Front 1280P cabin & rear 480P
Video specification	AVI
Image format	JPEG

### WARRANTY

Supersonic Inc. ("Supersonic") warrants this product to the original purchaser ONLY, to be free from defects in materials and workmanship under normal use, for ninety (90) DAYS from the date of original purchase. Proof of purchase (receipt) required. Please visit <https://www.supersonicinc.com/pages/warranty> for additional information.

6