

Yoga 7i 2-in-1 Aura Edition (16", 11)

Ultimate Flexibility, Limitless Creativity

The Yoga 7i 2-in-1 Aura Edition is a 16-inch convertible laptop designed for young creatives and multitaskers. It stands out with its 360° hinge offering five flexible modes, the Yoga Pen Gen 2 with high pressure sensitivity for precise drawing, and a vivid 2.8K PureSight Pro display with eye-care technology. Together, these features make it a versatile and powerful partner for creativity and everyday productivity.



Create Your Way with 360° Flexibility

A convertible design with five distinct modes—Laptop, Tablet, Tent, Display, and the new Canvas Mode—offers unmatched flexibility for creativity, productivity, and entertainment, adapting to whatever users need in the moment.



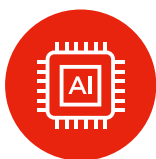
Responsiveness at the Speed of Thought

AES 3.0 technology with 8,192 levels of pressure sensitivity ensures great precision. From subtle shading to bold strokes, every movement is captured cleanly, translating ideas into digital form with total accuracy.



Create and Stream in Stunning OLED Clarity

Ready for epic visuals? The 16" PureSight Pro OLED display delivers up to 2.8K resolution with stunning, true-to-life colors—100% sRGB and P3—enhanced by Dolby Vision®, a 120Hz refresh rate, and up to 1000 nits peak HDR brightness.



For those who refuse to choose.

Intel® Core™ Ultra powers the Yoga 2-in-1 Series for creators who need balance. Stay fast and efficient even unplugged with Intel® graphics and AI optimization for sketching, streaming, and multitasking in every mode.

Yoga 7i 2-in-1 Aura Edition (16", 11)

SPECIFICATIONS

YOGA 7 2-IN-1 16IPH11

PERFORMANCE

Processor

Intel® Core™ Ultra 7 355
Intel® Core™ Ultra 5 325
Intel® Core™ Ultra 5 322

Operating System

Windows 11 Home
Windows 11 Pro

Graphics

UMA: Intel® Graphics

Memory

LPDDR5X :16 GB/ 24 GB/ 32 GB;
7467MT/s Dual Channel

Storage

PCIe SSD Gen 4 M.2: 512G/1TB/2TB

Camera & Microphone

5MP IR Camera
Camera Shutter
4 X 3D noise-canceling mics

Audio

4 x 2W Speakers
With Dolby Atmos® Audio

Battery¹

70Whr
Rapid Charge Express:15 minutes @3 Hours
2.8K OLED:
Mobile Mark 30@250nits: TBD Hours
Local 1080P Video@ 150 nits: TBD Hours
WUXGA OLED:
Mobile Mark 30@250nits: 16.5 Hours
Local 1080P Video@ 150 nits: 36 Hours
WUXGA LCD:
Mobile Mark 30@250nits: 16 Hours
Local 1080P Video@ 150 nits: 25.5 Hours

¹ All battery life claims are approximate and based on two methods of testing: continuous Local Video Playback and Web Browsing @ 150 nits brightness on the latest update of Windows 11. Actual battery life will vary and depends on many factors such as product configuration and usage, software use, wireless functionality, power management settings, and screen brightness. The maximum capacity of the battery will decrease with time and use.

DESIGN

Display

16" 2.8K (2880 x 1800) 120Hz VRR, 16:10, PureSight Pro OLED, 1100 nits peak brightness(HDR), 100% sRGB, 100% P3, 99% Adobe RGB, Delta E < 1, Dolby Vision® VESA Certified DisplayHDR True Black 1000, TÜV Low Blue Light Certification, Eyesafe® Certification, Glass, Touchscreen

16" WUXGA (1920 x 1200) 60Hz, 16:10, WUXGA OLED, 300 nits brightness (SDR), 100% sRGB, 100% DCI-P3, Dolby Vision®, Glass, Touchscreen

16" WUXGA (1920 x 1200) 60Hz, 16:10, WUXGA LCD, 400 nits brightness (SDR), 45%NTSC, Dolby Vision®, Glass, Touchscreen

4-Side Narrow Bezel (89.52% AAR)

Top: 5.6mm
Left/ Right: 2.7mm
Bottom: 14.12mm

Dimensions (W x D x H)²

(mm) : 361x 257 x as thin as 15.85mm
(inches) : 14.21" x 10.11" x as thin as 0.62"

Weight

Starting at: 1.74kg

Hinge

360°

² Height is calculated using T2 measurements and should be considered 'as thin as'.

³ The actual transfer speed of the USB 3.2 will vary and, depending on many factors, such as the processing capability of host and peripheral devices, file attributes and other factors related to system configuration and your operating environments, may be slower than a speed of 20 Gbit/s.

⁴ EPEAT®-registered where applicable - see www.epeat.net for registration status by country.

⁵ The transfer speed of the ports will vary and, depending on many factors, such as the processing speed of the host device, file attributes and other factors related to system configuration and your operating environment, will be slower than theoretical speed.

CONNECTIVITY

WLAN

Wi-Fi 7

Bluetooth³

Bluetooth® 5.4

Input/Output (I/O) Ports⁵

Left Side

- 1 x USB-C® (Thunderbolt™ 4, USB 40Gbps)³
- 1 x HDMI™ 2.1 TMDs, up to 4K /60Hz
- 1 x Audio Combo Jack

Right Side

- 1 x USB-C® (Thunderbolt™ 4, USB 40Gbps)³
- 1 x USB-A (USB 10Gbps), Always On
- 1 x Micro SD card reader
- 1 x Power Button

PRELOADED SOFTWARE

- Windows 11 Home/Pro
- Lenovo Vantage
- Microsoft 365 Trial
- McAfee® liveSafe™
- Dolby® access (Dolby Vision®and Atmos®)
- Smart Note
- Smart Connect

NOTEABLE MENTIONS

- MIL-STD-810H
- Carbon Neutral Certified
- EPEAT® Gold-registered⁴
- Energy Star 9.0
- 100% Plastic Free Packaging

LENOVO SERVICES

Lenovo Premium Care Plus

Lenovo Premium Care Plus is the ultimate PC support experience with you as our priority 24/7. Enjoy personalized hardware and software support from a global network of elite technicians, along with accidental damage protection, fast repairs with onsite support, extended battery warranty, data migration assistance, and smart performance solutions that optimize PC performance and security.

Lenovo Smart Performance

Smart Performance Services within Lenovo Vantage will keep your system running at optimum performance and proactively fix issues that affect PC performance, internet performance, remove malware, and improve device security.

Lenovo Accidental Damage Protection

Avoid the hassles of unexpected damage & repair costs. With coverage for drops, spills, electric surges, and broken LCD screens, accidental damage protection makes it easy to repair to your PCs and ensures your device is up and running fast.

Lenovo CO₂ Offset Services

Offset the carbon emissions of your PC with Lenovo CO₂ Offset Services - an easy and transparent solution to offset emissions across the average lifecycle of your device. These offsets are invested in UN-approved initiatives like renewable energy or ecological projects, thus contributing towards a more sustainable future.

Lenovo Sealed Battery Warranty

Long-lasting battery life is not just a feature but a necessity to help you stay productive and connected all day long. Protect your PC's sealed battery from degradation, enjoy hassle-free battery replacement service, and safeguard your PC from future battery failure with our Sealed Battery Warranty Service.

Lenovo Warranty Extensions (Up to 3 Years Duration)

Gain complete peace of mind by extending your base warranty to up to 3 years and minimize unexpected repair costs.

OPTIONS & ACCESSORIES



Lenovo Yoga Pen Gen 2 with Case



Lenovo Yoga Bluetooth Silent Mouse



Lenovo Yoga Tote Sleeve

McAfee® LiveSafe™

Register McAfee® to enjoy these benefits in your FREE 30-day trial.

- Award-winning Antivirus
- Password Manager
- Safe Web Browsing
- Multi-device Compatibility
- Identity Theft Protection
- Free Customer Support

* Example of Lenovo catalogue naming convention

Yoga	2-in-1	7	16	1	1	1	1
Sub-brand	Form Factor	Positioning	Screen Size	Platform Code	Generation		

Intel® platform codes

Gemini Lake: **IGM**, Whiskey Lake: **IWL**, Icelake: **IIL**, Gemini Lake: **IGL**, Comet Lake: **IML**, Tiger Lake: **ITL**, Alder Lake: **IAP**, Alderlake-HX: **IAX**, AlderLake-U15: **IAU**, AlderLake-P28: **IAP**, AlderLake-P28/U15: **IAL**, AlderLake-H45: **IAH**, Alderlake N: **IAN**, Raptorlake-PX: **IRP**, Raptorlake-H: **IRH**, Raptorlake-HX: **IRX**, Alderlake-M U9: **IAM**, Raptorlake U: **IRU**, Meteorlake P: **IRP**, Raptorlake-P: **IRP**, Raptorlake-P28/U15: **IRL**, Meteor Lake-H: **IMH**, Lunar Lake: **ILL**, Panther Lake **IPH**.

WWW.LENOVO.COM

Lenovo reserves the right to alter product offerings and specifications at any time, without notice. Lenovo makes every effort to ensure accuracy of all information but is not liable or responsible for any editorial, photographic or typographic errors. All images are for illustration purposes only. For full Lenovo product, service and warranty specifications visit www.lenovo.com. Lenovo makes no representations or warranties regarding third party products or services. **Trademarks:** The following are trademarks or registered trademarks of Lenovo: Lenovo, the Lenovo logo, IdeaPad, IdeaCentre, yoga and yoga home. Microsoft, Windows and Vista are registered trademarks of Microsoft Corporation. Intel, the Intel logo, Intel Inside, Intel Core, and Core Inside are trademarks of Intel Corporation in the U.S. and/or other countries. Other company, product and service names may be trademarks or service marks of others. Visit www.lenovo.com/lenovo/us/en/safecomp/ periodically for the latest information on safe and effective computing. ©2025 Lenovo. All rights reserved.

