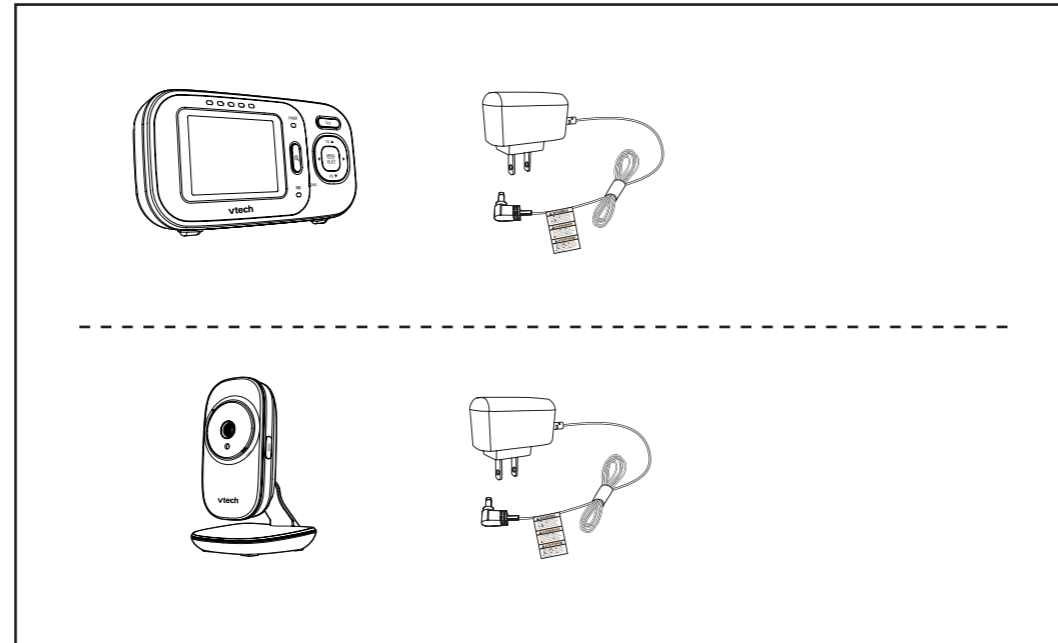


Go to www.vtechphones.com to register your product for enhanced warranty support and latest VTech product news.

VM2251

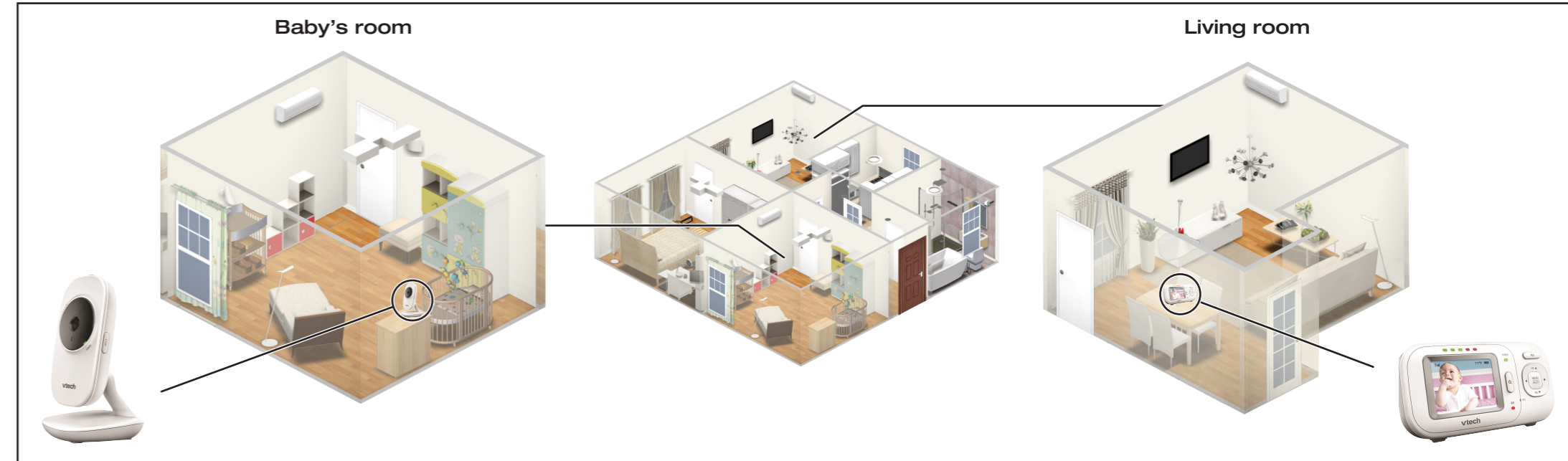
What's in the box



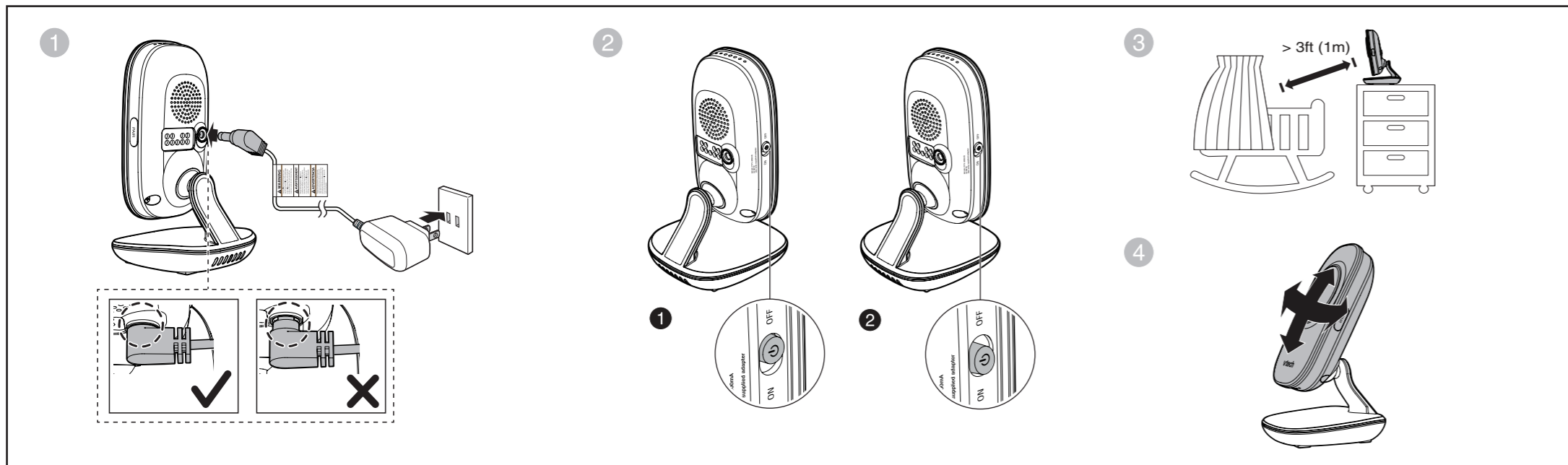
vtech®

Quick start guide

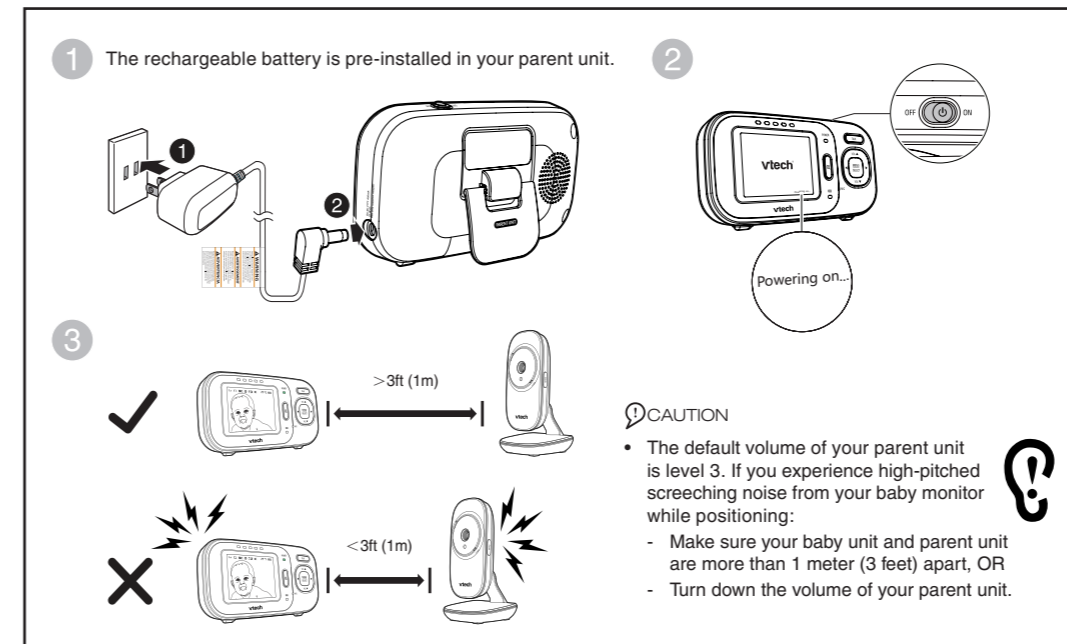
VM2251 baby monitor system



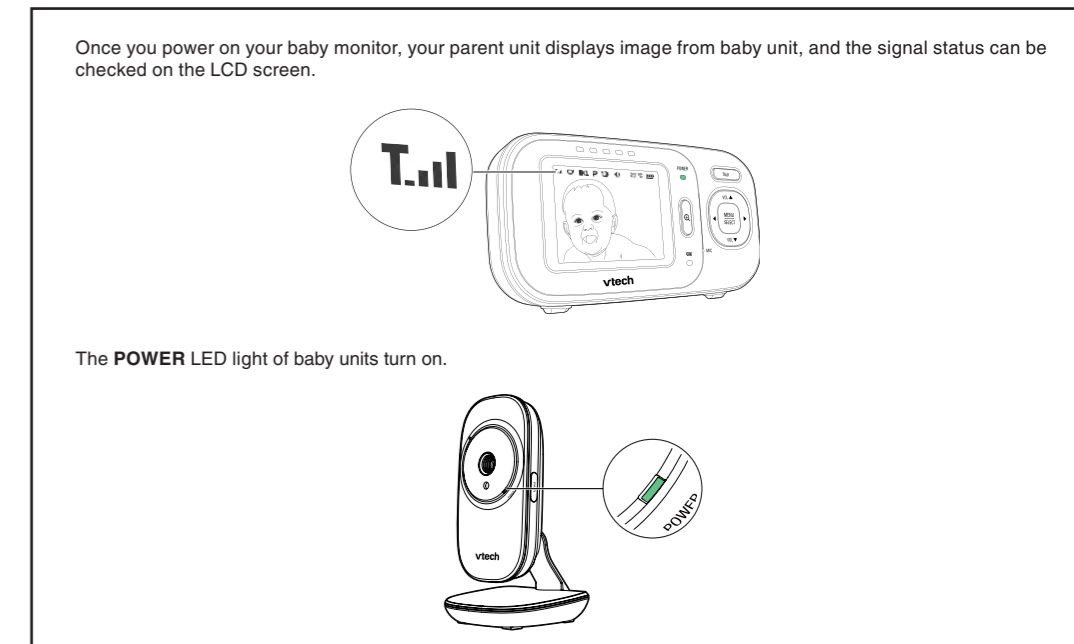
1 Connect and power on - Baby unit



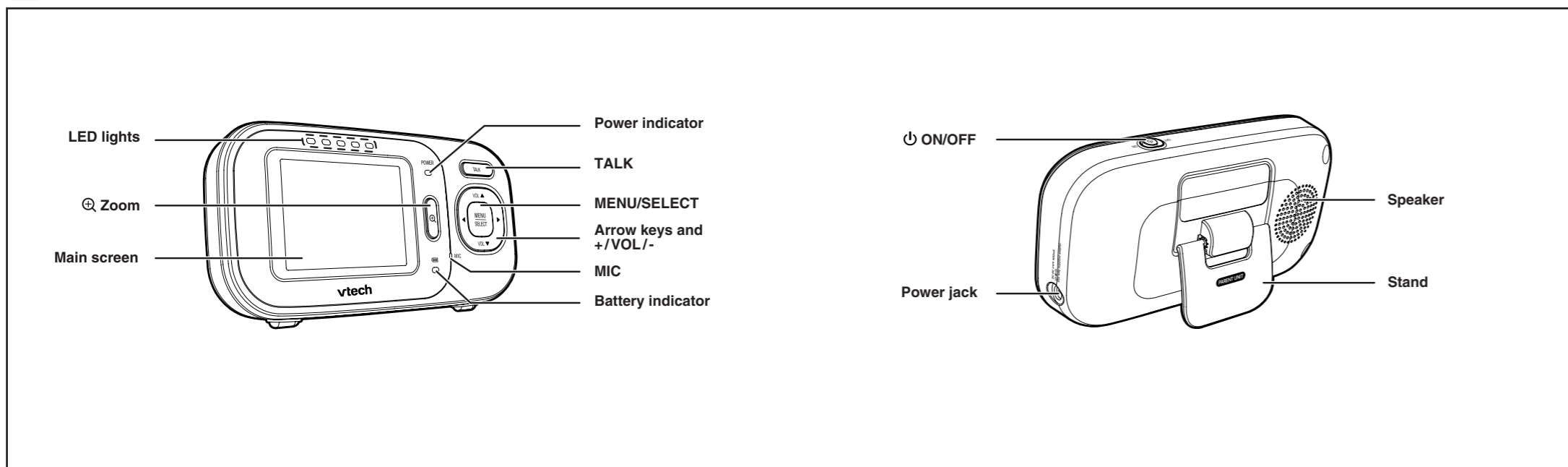
2 Connect and power on - Parent unit



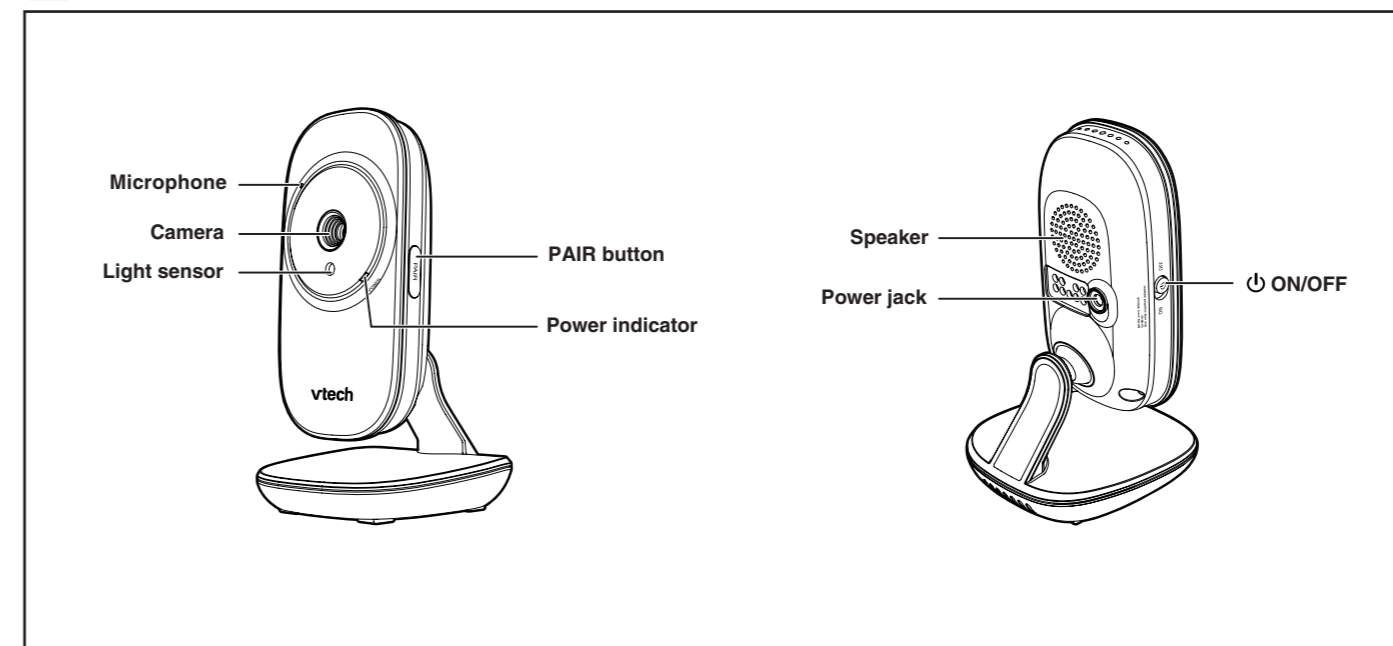
3 Status check



Overview - Parent unit

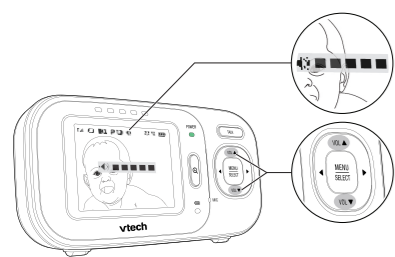


Overview - Baby unit



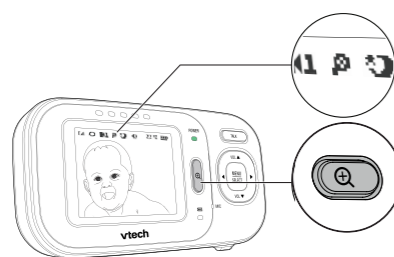
Adjust speaker volume

Press **+ / VOL / -** to adjust your parent unit speaker volume. It determines the volume of sound transmitted from your baby units.



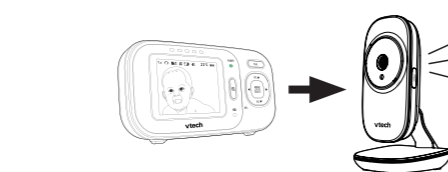
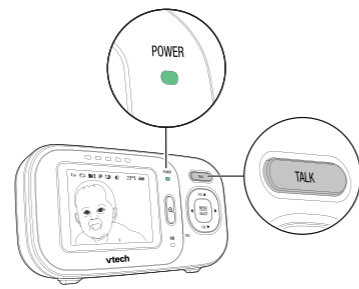
Zoom

Press **Q** to zoom in or out.



Talk to your baby unit

Press and hold **TALK** and speak to your parent unit. Your voice is transmitted to the baby unit.



Turn off the screen

1. Press **MENU / SELECT** to enter the main menu when the parent unit is idle.
2. Press **◀** or **▶** to choose **☒**, then press **▲** to open the submenu.
3. Press **▲** or **▼** to choose the desired time period to automatically turn off screen (**OFF** / **☉** - 5 min. / **☽** - 30 min. / **●** - 60min.), then press **MENU / SELECT** to confirm your selection and return to idle screen.

Use the menu

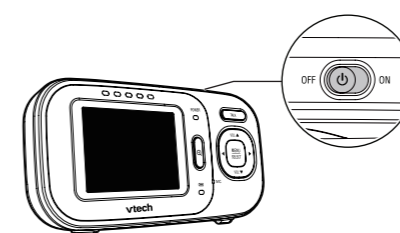
Press **MENU** to enter the menu, choose a menu item, or save a setting.

- While in the menu:
- Press **◀** or **▶** to scroll among the menu options.
 - Press **▲** or **▼** to select an item.
 - Press **SELECT** to confirm your selection.



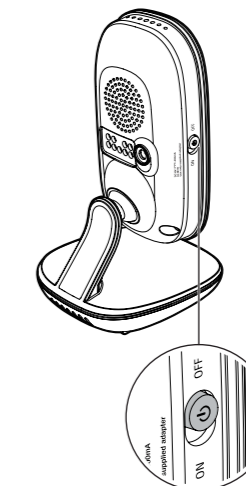
Turn off the parent unit

Slide **⏻** to OFF to power off your parent unit.

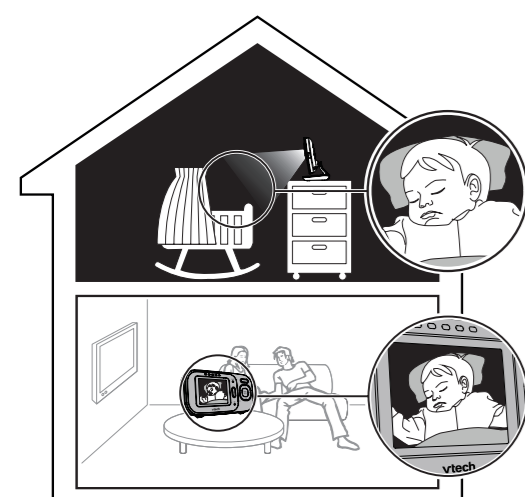


Turn off the baby unit

Slide the **ON/OFF** switch to **OFF** to power off your baby unit.



Night vision



The baby unit has infrared LEDs that allow you to see your baby at night or in a dark room. When the baby unit detects low light levels, the infrared LEDs turn on automatically. The images from this baby unit is in black and white, and **👁** appears on screen.

NOTES

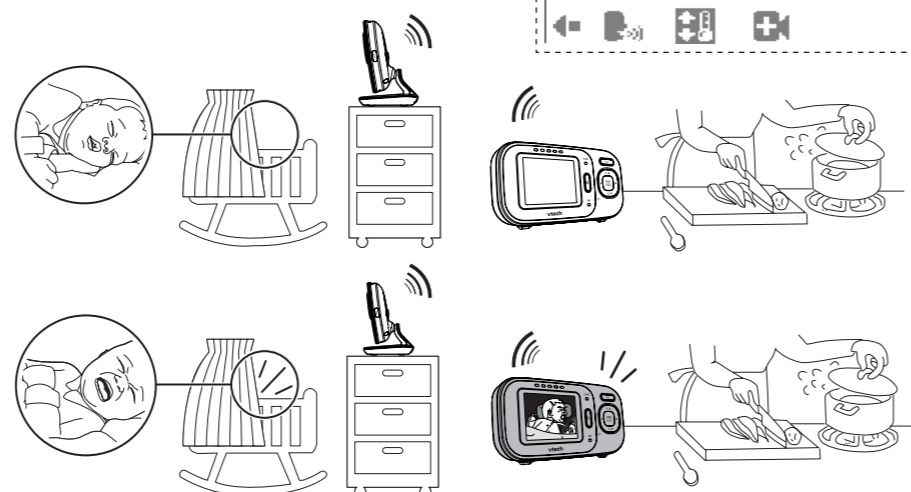
- It is normal if you see a short white glare on your parent unit screen as the baby unit is adapting to the dark environment.
- When the infrared LEDs are on, the image is in black and white. This is normal due to external light sources.

TIP

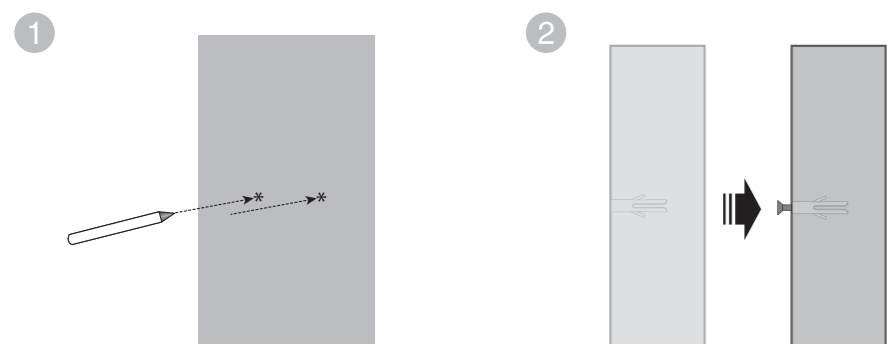
- Depending on the surroundings and other interfering factors, like lightings, objects, colors and backgrounds, the display resolution may vary. Adjust the baby unit's angle, or place the baby unit at a higher level to prevent glare and blurry display.

Sound activation

Automatically turns on the parent unit screen when the baby unit being viewed detects a sound after the screen is turned off. When no sound is detected within 50 seconds, the screen is automatically turned off to save power.



Mount the baby monitor (optional)

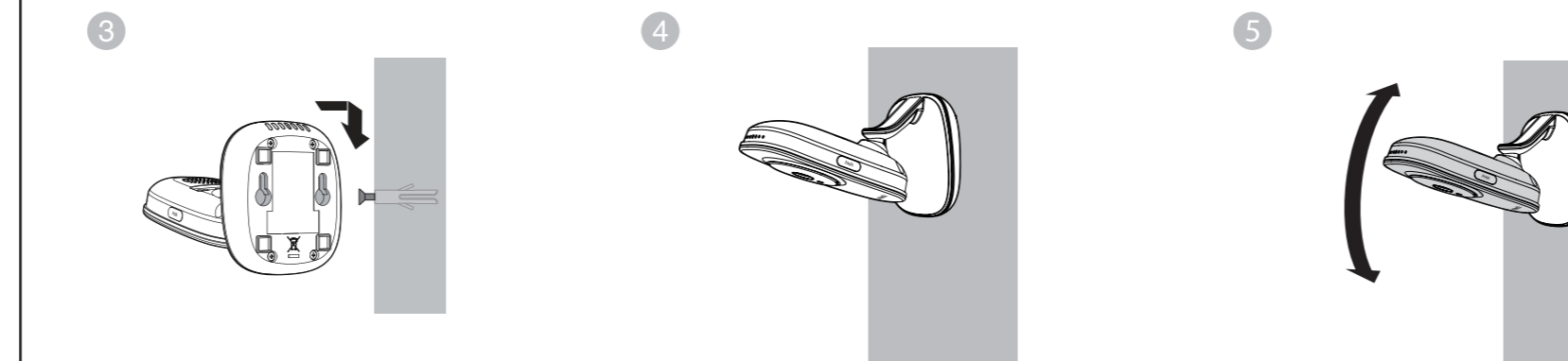


NOTE

- Check for reception strength and camera angle before drilling the holes.

Use a pencil to mark two holes in parallel. Make sure they are the same distance apart as the wall mount at the bottom of the baby unit.

Drill two holes in the wall (7/32 inch drill bit). If you drill the holes into a stud, insert the screws into the holes. Tighten the screws until only 1/4 inch of the screws are exposed.



Align the wall mount bracket and screws with the holes in the wall as shown. Slide the wall mount down until it locks into place.

Place the baby unit on the wall mount bracket. Make sure the baby unit is fixed on the wall.

Pan or tilt to adjust the baby unit angle.

