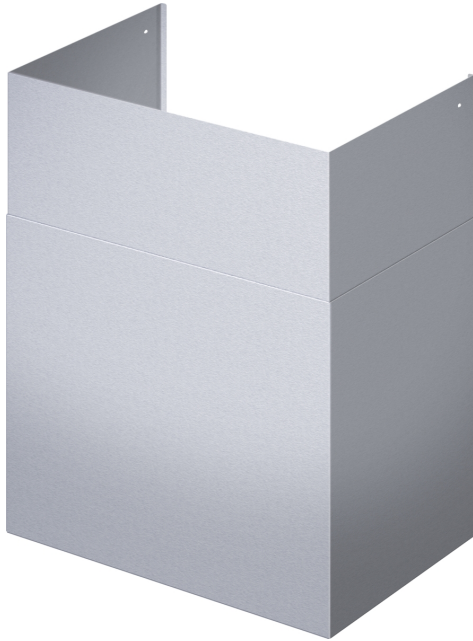


**Chimney, 531 mm
DC361012W**



Fits from 10-foot to 12-foot ceilings

- Compatible with 36" wide Professional Wall Hoods
- Telescoping design
- Perfect match to stainless steel finish of the Thermador Professional Wall Hoods
- Two pieces included in the telescoping design
- Lower duct cover piece is 30" Tall; Upper duct cover piece is 32" tall

Product group:Accessory
Brand:Thermador
Product name / series name:
SKU:DC361012W
Internal article number:00000000023000923
EAN code:825225962076
Product Packaging Dimensions (HxWxD):45 1/8" x 23 5/8" x 16 7/8"
Net Weight:29.000 lbs
Gross Weight:33.000 lbs
Quantity per packing unit:
Standard number of units per pallet:
UPC code:825225962076



Chimney, 531 mm
DC361012W

measurements in inches (mm)

