

Simple Setup

- 1 Insert the included 2 AAA Batteries into your Sideclick Remote.
- 2 Select and attach the Adapter Clip that corresponds to your Roku® remote
- 3 Snap your Roku® remote into Adapter Clip.*
- 4 Program Sideclick and you're ready to go.

(Detailed instructions on reverse)



Easy to Use



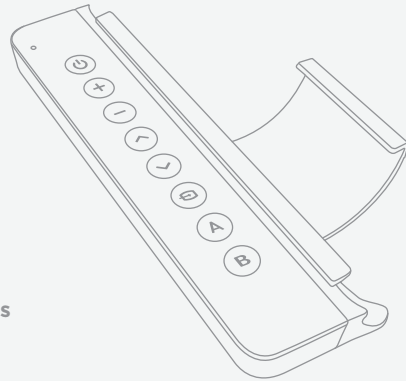
Fast Setup



Long Battery Life



Control Multiple Devices



* Please install the Roku® remote carefully to avoid marring surface.

** Please note the Sideclick adapter clips will cover the headphone jacks of certain Roku® remotes.

sideclick™
Streamline Your Streaming Experience

What's Included

- Sideclick Universal Learning Remote
- 2 AAA Batteries
- 5 Adapter Clips

Tips

Please visit our website, www.sideclickremotes.com for additional information including:

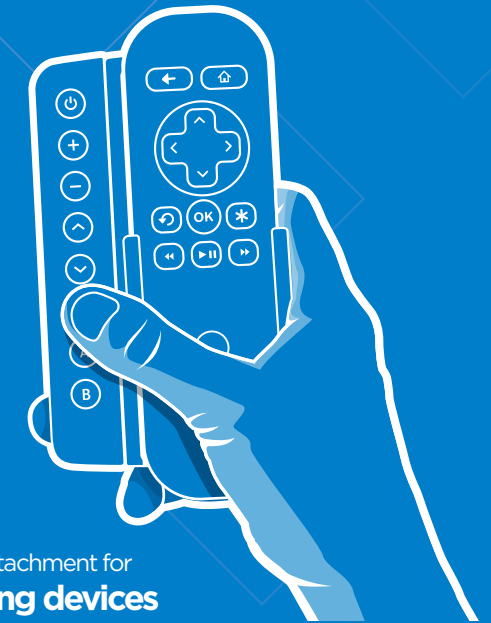
- Assembly videos
- Programming videos
- Troubleshooting
- Information on selecting the right Adapter Clip for your streaming remote
- Additional Sideclick products and accessories
- Registering your device

Sideclick products, True Bloom LLC, and any of Sideclick's or True Bloom LLC's investors, are not affiliated with Roku, Inc. or the Roku streaming products as a whole.



sideclick™
Streamline Your Streaming Experience

Universal Remote Attachment for
Roku® streaming players



Universal Remote Attachment for Roku® streaming devices

Roku 1 | Roku 2 | Roku 3 | Roku 4 | Roku SE | Express | Express+
Premiere | Premier+ | Ultra | Roku® Streaming Stick® | Roku® Streaming Stick®+

Getting Started

01 Select Your Clip

Select your Adapter Clip based on Model, Shape, and Finish of your Roku® remote

Clip RB

Express Express+ Premier
Roku® Streaming Stick® (with power button)
Roku® Streaming Stick®+ (with power button)

Clip RC

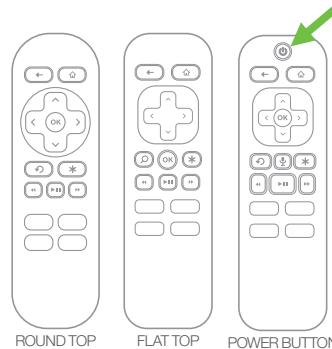
Premier+ Ultra (no power button)

Clip RE

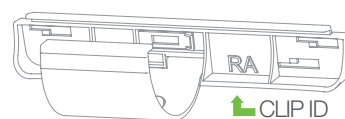
Ultra (with power button)

For all other models use the table below

| Remote Shape | Remote Finish | Clip ID |
|--------------|---------------|---------|
| Round Top | Gloss | RA |
| Round Top | Matte | RD |
| Flat Top | Gloss | RC |
| Flat Top | Matte | RB |



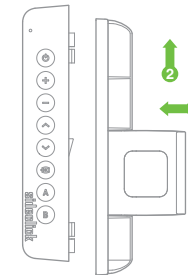
ROUND TOP FLAT TOP POWER BUTTON



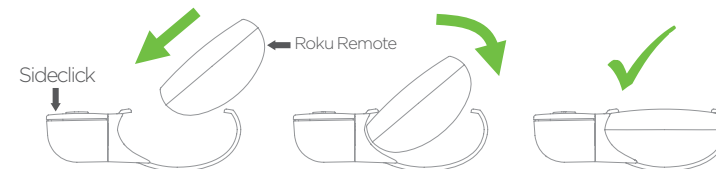
*Some models require a foam spacer (included). If there is a gap between the Roku remote and the clip or your remote feels loose, see section 3 for foam spacer installation instructions.

02 Attach Your Clip

- 1 Line up tabs on Sideclick remote with keyholes in clip.
- 2 Press clip against Sideclick remote and slide clip up until you hear a click and it locks in place.

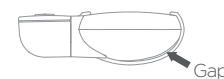


03 Install Your Remote

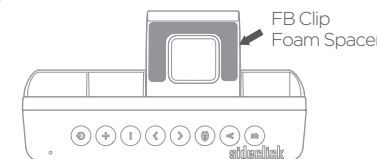


Tip 1

If you are using the **RB clip** and you notice a gap between the clip arm and the remote, install the supplied c-shape foam spacer to fill the gap.



Gap



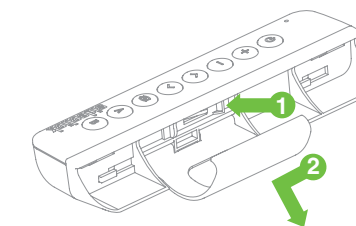
Tip 2

If you are experiencing a loose fit between the remote and the clip and you have already verified that you are using the correct clip, you can install the spare square foam spacer over the existing foam spacer. This will tighten up the fit and reduce any sliding of the remote.

04 Program Your Sideclick

- 1 On your Sideclick remote, hold down the **⏻** + **B** buttons simultaneously until the LED lights solid.
- 2 Position your Sideclick remote and the device remote you are learning from on a table, head to head, approximately 1 inch apart.
- 3 Press and release the Sideclick button you wish to program. The LED will start blinking.
- 4 Press and hold the button you want it to learn from on your device remote.
 - The LED will blink 3 times indicating a successful learn, then will return to solid indicating you are ready to program other buttons.
 - If the LED does not return to solid, a problem in programming has occurred. Exit programming mode via step 6 and try again.
- 5 While LED is on solid, repeat steps 3 & 4 for each button you would like to program.
- 6 To exit programming mode, press the **⏻** + **B** simultaneously and the LED will turn off. You can also wait approximately 10 seconds and it will exit programming mode automatically.
- 7 Your Sideclick is now ready to use.

05 Removing Your Clip



- 1 Gently pull out on locking tab with index finger or a pen tip.
- 2 While pulling out on the locking tab, slide clip down and then away from remote.