



## **IQ sound IQ-243TWS True Wireless Bluetooth Earbuds User Manual**

[Home](#) » [IQ sound](#) » IQ sound IQ-243TWS True Wireless Bluetooth Earbuds User Manual 

**IQ sound**<sup>®</sup>  
True Wireless Bluetooth Earbuds  
with Charging case

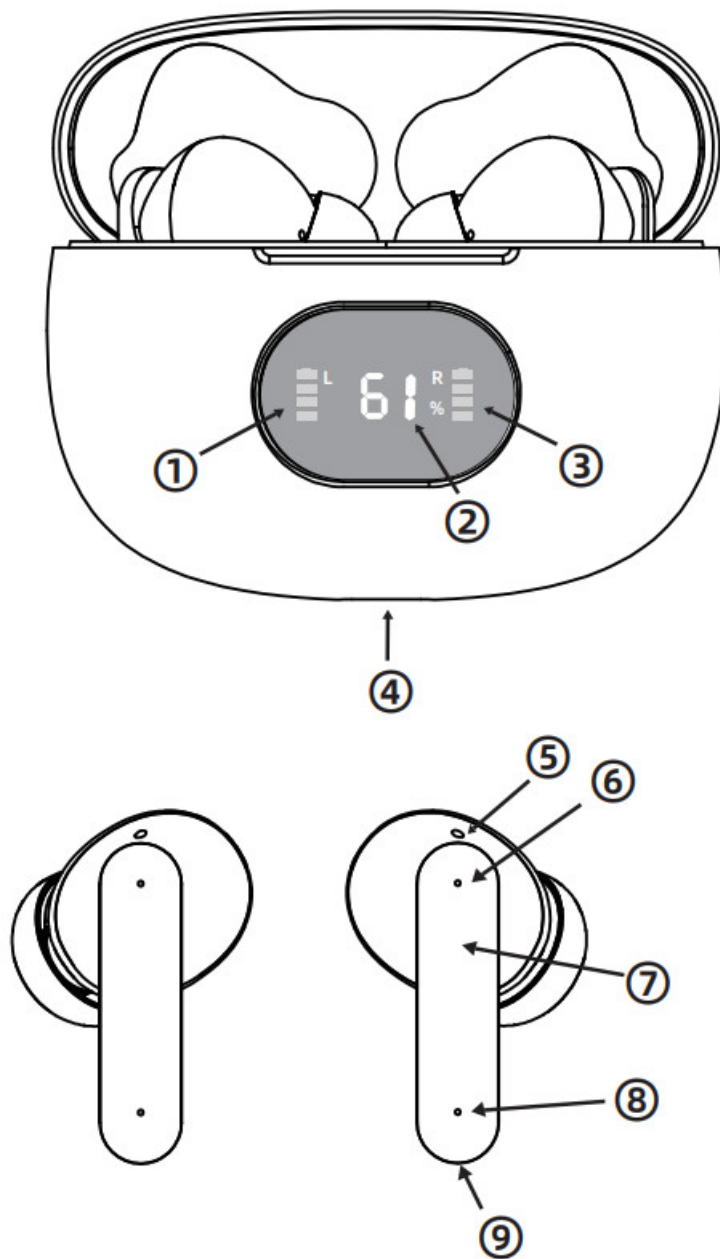


**Model No.: IQ-243TWS**  
**FCC ID 2AMD8IQ-243TWS**  
**Please read carefully this manual**  
**before operating the device.**

#### **Contents**

- 1 PRODUCT OVERVIEW**
- 2 SAFETY INSTRUCTIONS**
- 3 INSTRUCTIONS FOR USE**
- 4 SPECIFICATION**
- 5 DISOPAL**
- 6 Documents / Resources**
  - 6.1 References**

## **PRODUCT OVERVIEW**



1. Left earbud battery indicator
2. Charging Case charging LED
3. Right earbud battery indicator
4. Charge port Type-C
5. Microphone
6. LED indicators
7. Multi-Function buttons
8. Microphone
9. Charge pins

## SAFETY INSTRUCTIONS

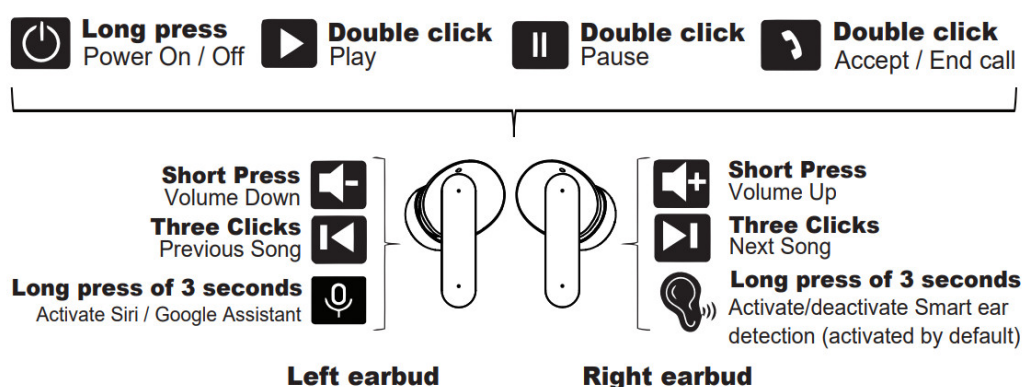
- Clean only with dry cloth.
- Do not block any ventilation openings.
- Do not install near any heat sources such as radiators, heat registers, stoves, or other apparatus (including amplifiers) that produce heat.

- Protect the power cord from being walked on or pinched particularly at plugs, convenience receptacles, and the point where they exit from the apparatus.
- Only use attachments/accessories specified by the manufacturer.
- Unplug this apparatus during lightning storms or when unused for long periods of time.
- Refer all servicing to qualified service personnel. Servicing is required when the apparatus has been damaged in any way, such as power supply cord or plug is damaged, objects have fallen into the apparatus, does not operate normally, or has been dropped.

## WARNING!

This is not a toy. Adult supervision is recommended. Do not allow small children to use this product. The presence of small parts may present a choking hazard. Do not use this product with non-compatible stereo devices.

## INSTRUCTIONS FOR USE



### Power On, Pairing and Power Off

To turn on or off the earbuds you must follow this procedure:

**Power On:** Take out both earbuds from the Charging Case.

One earbud will blink white and green, the other earbud will blink green and enter in pairing mode.

If we have already synchronized them with the mobile, the earbuds will connect directly with the smartphone.

Also, you can turn on earbuds manually. You must press button 7 in both earbuds during 3 seconds.

### Pairing

The first time we use the device, we will have to pair it with our smartphone.

This procedure will have to be repeated every time you want to connect the earbuds to a new device. To turn on the earbuds, we follow the procedure previously explained in the manual. The earbuds will flash white and green and then connect to each other.

From your smartphone, look in the list of Bluetooth devices for the "IQ-243TWS" and connect. When the earbuds are paired with your mobile, the LED will turn off and you will hear a bip in both earbuds. Once connected to your smartphone, you will not have to repeat the process again.

**Power off:** To turn off the earbuds, insert them into the Charging Case. Also you can turn off earbuds manually. You must press button 7 in one earbud during 5 seconds.

### Accept or reject incoming calls with Bluetooth earbuds

We can receive calls while using the IQ-243TWS earbuds. To accept the call, press twice the button 7 on any of the earbuds. You can talk regularly, using the built-in microphone in the earbuds. To end the call, press twice the button 7 on any of the earbuds. To reject a call, long press the button on any of the earbuds.

### Voice assistant

The IQ-243TWS earbuds have the Voice Assistant function. You can activate it by pressing the multi-function button on left earbud 3 seconds and release it. You will hear a short sound, and then you will hear Voice Dial, after which you can give the order you want to the microphone of your earbuds. By activating the Voice Assistant, you can give orders to your smartphone, manage music, request information, etc.

This function is only available on compatible Android smartphones, and on Apple devices with the Siri service available.

### Ear detector

You can activate or deactivate the ear detector by pressing the button on the right earbud for 3 seconds and

release it. The ear detector causes the music to pause when it detects that one or both earbuds are removed from the ear, and the music to resume when we put them back on.

By default it will be activated. When activated you will hear "Ear sensor ON". When deactivating it you will hear "Ear sensor OFF".

Please note that the sensitivity of this feature depends on the correct placement of the earbuds. We recommend removing both earbuds at the same time so that the operation is correct and the music is paused.

#### **Use of Charging case:**

The Charging Case of the IQ-243TWS has an internal battery to recharge the earbuds. To recharge the earbuds, you must insert them correctly into the charging case, matching the charging pins of the earbuds and the charging case.

When the earbuds are charging, they will turn off and disconnect from your smartphone. The white lights on the earbuds will turn on, indicating that the charge is in progress.

When an earbud is fully charged, its light will turn off.

You can see the charge level of the earbuds on the screen, using the battery indication of each earbud.

To charge the charging case, connect the supplied cable to a USB charger on other power source or any computer or other 5V but current do not exceed 2A output charger.

The LED indicator shows the percentage of battery remaining in the Charging Case. When the Charging Case is charging, the numbers will flash and when the charge is complete, the percentage will reach 100%.

## **SPECIFICATION**

Bluetooth Version: V 5.3

Speaker Diameter: 10 mm

Speaker Power Output: 20mW

Speaker Sensitivity: 108±3 dB at 1000 Hz

Speaker Impedance: 32 Ω ± 15% Ω

Battery Capacity: 3.7V,300mAh

Frequency Response: 20HZ-20KHZ

Bluetooth Connecting Range: 10m

#### **BATTERY CASE:**

Capacity: 300 mAh

Charging Port: USB Type-C

Earbuds Battery: 40 mAh + 40 mAh

Playing Time: up to 8h + 20h with charger

Charging Time: approx. 1.5 h

## **DISOPAL**

#### **ENVIRONMENTAL PROTECTION**

Waste electrical production should not be disposed of with household waste. Please recycle where facilities exist. Check with your Local Authority or retailer for recycling advice.

#### **Warranty**

Basic Warranty StatementSupersonic Inc.("Supersonic") warrants this product to the original purchaser ONLY, to be free from defects in materials and workmanship under normal use, for ninety (90) DAYS from the date of original purchase. Proof of purchase (receipt) required. Please visit <http://www.supersonicinc.com/warranty> for additional information.

This device complies with part 15 of the FCC Rules. Operation is subject to the following two conditions:

1. This device may not cause harmful interference, and
2. this device must accept any interference received, including interference that may cause undesired operation.

**NOTE:** This equipment has been tested and found to comply with the limits for a Class B digital device, pursuant to part 15 of the FCC Rules. These limits are designed to provide reasonable protection against harmful interference in a residential installation. This equipment generates, uses and can radiate radio frequency energy


and, if not installed and used in accordance with the instructions, may cause harmful interference to radio communications. However, there is no guarantee that interference will not occur in a particular installation. If this equipment does cause harmful interference to radio or television reception, which can be determined by turning the equipment off and on, the user is encouraged to try to correct the interference by one or more of the following measures:

- Reorient or relocate the receiving antenna.
- Increase the separation between the equipment and receiver.
- Connect the equipment into an outlet on a circuit different from that to which the receiver is connected.
- Consult the dealer or an experienced radio/TV technician for help.

**Warning:** Changes or modifications not expressly approved by the party responsible for compliance could void the user's authority to operate the equipment.

The device has been evaluated to meet general RF exposure requirements. The device can be used in portable exposure conditions without restriction.

## Documents / Resources

	<p><a href="#">IQ sound IQ-243TWS True Wireless Bluetooth Earbuds</a> [pdf] User Manual IQ-243TWS, IQ-243TWS True Wireless Bluetooth Earbuds, IQ-243TWS Wireless Bluetooth Earbuds, True Wireless Bluetooth Earbuds, Wireless Bluetooth Earbuds, Earbuds, Wireless Earbuds, Bluetooth Earbuds</p>
---	---

## References

- [Warranty – Supersonic Inc](#)