

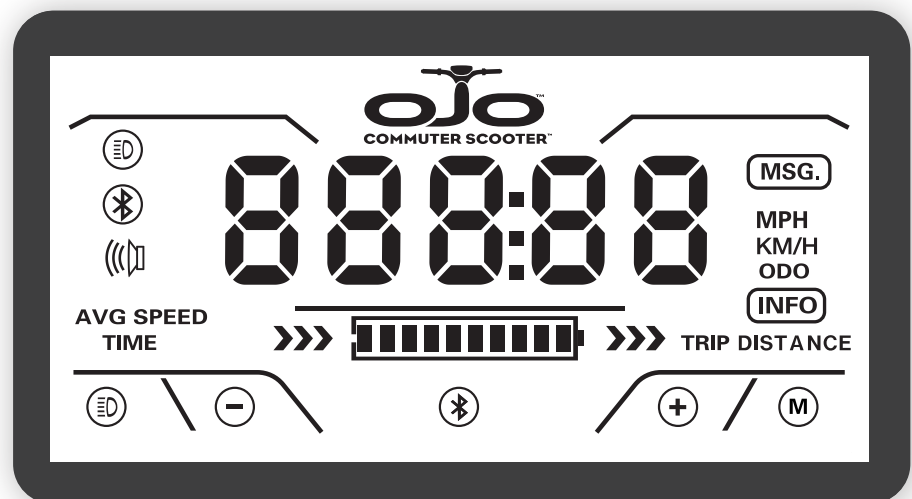
# REAL SMART TRANSPORTATION



## INNOVATION

The new category of electric vehicles, distinctively standing on its own. The evolution of clean travel.

- Removable 48V Lithium Ion battery with 25 mile range
- Patented on-board charger plugs into any 110V wall outlet
- Three speed modes. Sport Mode accelerates to top speed of 20 mph.
- Voice response
- Motion activated theft deterrent alarm
- User-friendly thumb throttle
- Dual integrated waterproof Bluetooth speakers
- Convenient USB port for charging phone while on the go
- All-welded heavy gauge extruded aluminum under-chassis for optimal strength and stability
- Electric safety horn
- 300 lb. weight capacity
- Weatherproof, waterproof, and rustproof
- Kickstand



### TOUCH-SCREEN CONTROL CENTER

The Ojo is equipped with an exclusive non-glare interactive capacitive display screen that puts all operational content at your fingertips. Adjust speed modes, turn the headlight/tail light on and off, sync your smart phone with Bluetooth speakers, adjust volume, and view MPH, battery level, trip time, trip distance and odometer.



Bike lane friendly (check local laws)



Patented on-board charger



20 mph top speed



## INSPIRED

By the need for style and simplicity, every inch designed and engineered just for you.

## FORM & FUNCTION



**BLACK**  
Model #501BLK  
shown



Patented 500 watt HyperGear® hub motor



Built-in USB port for phone charging



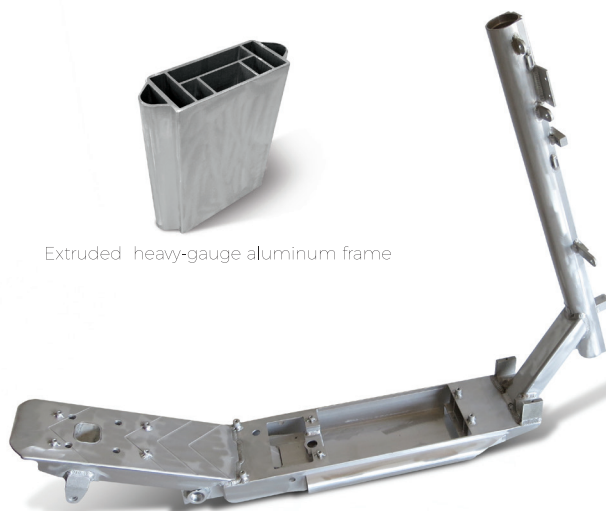
Extruded heavy-gauge aluminum frame



Patented on-board charger with retractable cord & plug



4-bulb LED headlight



All-welded heavy-gauge aluminum under chassis for **optimal strength & safety** - 300 lb capacity



Basket - sold separately  
Model #BSK100



Rearview mirrors - sold separately  
Set of 2 Mirrors: Model #MRI00

**ojo**™  
**COMMUTER SCOOTER™**

For more information, visit [ojoscooter.com](http://ojoscooter.com)