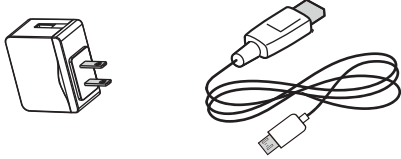


## In the box

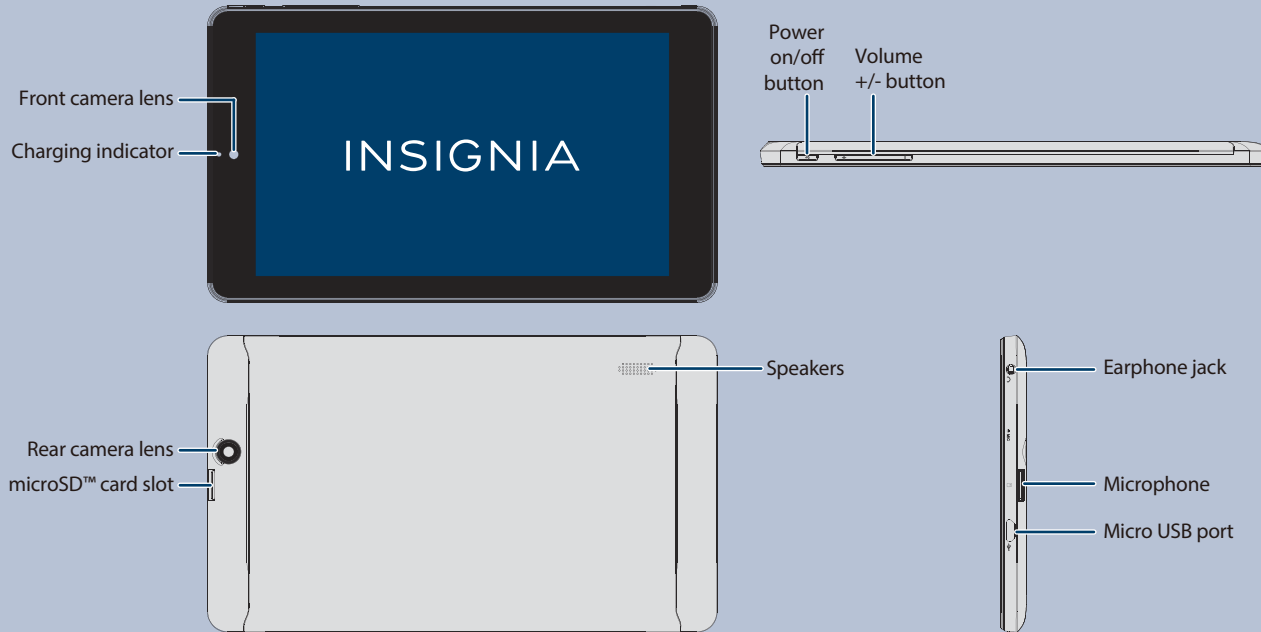
- USB power adapter
- Micro USB cable
- Quick Setup Guide
- Important Information



### FIND YOUR USER GUIDE ONLINE!

We are going green so a copy of your *User Guide* is not provided in the box but is available online. To find your manual, touch the ? icon on your tablet or go to [www.insigniaproducts.com](http://www.insigniaproducts.com) on your computer, then click **Support & Service**. Enter your model number in the box under **Manual, Firmware, Drivers & Product Information**, then click ►.

## Features



## 1 Charging the battery

**Note:** Charge your tablet fully (four hours) before using it the first time.

- 1 Connect the micro USB cable to your tablet.
- 2 Connect the other end of the micro USB cable to the USB power adapter (wall charger), then plug the adapter into a power outlet. It takes about four hours to fully charge your tablet.

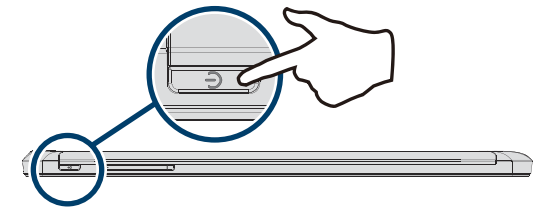
**Caution:** Use only the included power adapter or a qualified 5V/1.5A power adapter to charge your tablet's battery. An incompatible adapter may damage your tablet.



Before using your new product, please read these instructions to prevent any damage.

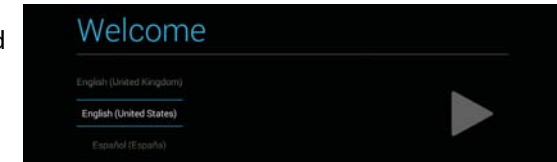
## 2 Turning on your tablet

- Press and hold the (power) button on the side of your tablet.



## 3 Setting up your tablet

When you turn on your tablet for the first time, you'll be prompted to set up things like Wi-Fi and e-mail. Follow the instructions displayed on your tablet to complete setup.

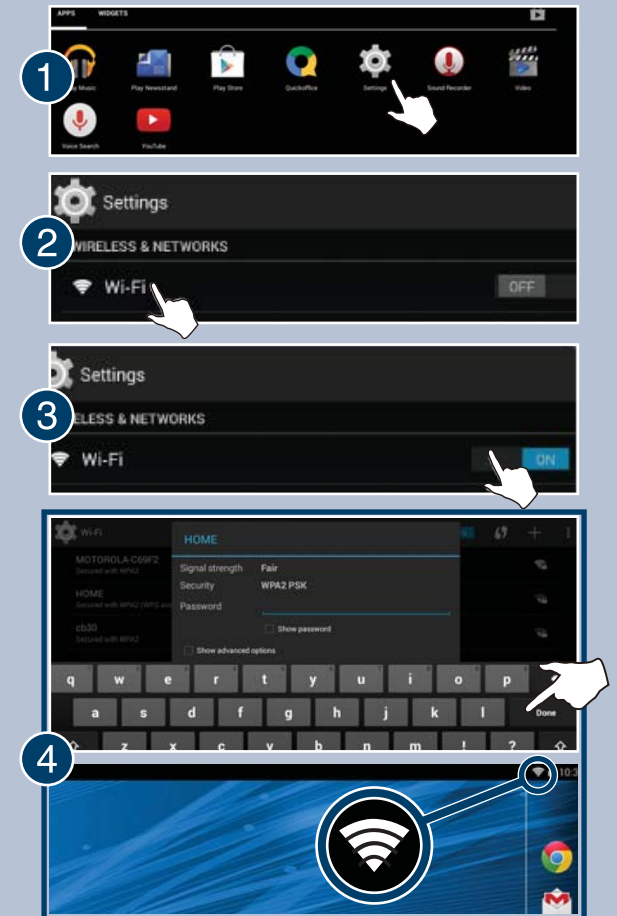


## Connecting to a Wi-Fi access point

To use the Wi-Fi feature, you need access to a wireless access point or hotspot.

- 1 From the home screen, touch the (applications) icon, then **Settings**.
- 2 Touch **Wi-Fi**.
- 3 Touch **OFF** to turn Wi-Fi on. Your tablet automatically scans for available networks.
- 4 Touch a Wi-Fi network.
  - a) If the network is open, your tablet connects automatically.
  - b) If the network is secured, enter a password. Touch **Done**, then **Connect**.

A connection icon appears in the status bar when your tablet is connected.



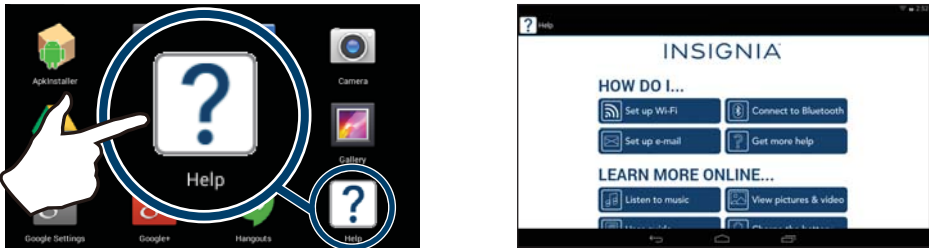
To open an application:

- 1 Touch the (⋮) (applications) icon.
- 2 Touch the application you want to open.



For additional help:

- Touch ? Help to open the Help app.



Using gestures to navigate

Touch		Touch an application or another item with your finger to open or select it.
Touch and hold		Touch an item with your finger and do not release it until your tablet responds.
Drag		Touch and hold an item with your finger, then move your finger to the position where you want to place the item.
Flick		Quickly slide your finger either vertically or horizontally across the screen.
Double-touch		Quickly touch the screen twice.
Pinch		Pinch your fingers together or move them apart.
Rotate		To change the screen orientation from portrait to landscape (or from landscape to portrait) turn your tablet sideways. When entering text, you can turn the tablet sideways to switch to landscape mode and make the keyboard larger.

To turn off your tablet:

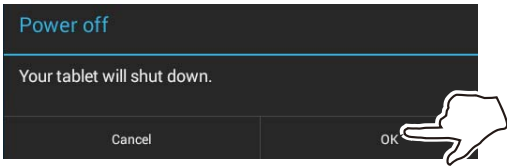
- 1 Press and hold (power) until the Power off screen opens.



- 2 Touch Power Off.



- 3 Touch OK to turn off your tablet.



One-year limited warranty

Visit [www.insigniaproducts.com](http://www.insigniaproducts.com) for details.

Need additional help?

Check out our online **community forum** at [www.insigniaproducts.com](http://www.insigniaproducts.com) for helpful information from other Insignia Tablet owners.

We're here for you

For customer service, call 877-467-4289 (U.S. and Canada) or 01-800-926-3000 (Mexico)

[www.insigniaproducts.com](http://www.insigniaproducts.com)

INSIGNIA is a trademark of Best Buy and its affiliated companies.  
Registered in some countries.  
Distributed by Best Buy Purchasing, LLC  
7601 Penn Ave South, Richfield, MN 55423 U.S.A.  
©2014 Best Buy. All rights reserved.  
Made in China

Function buttons

BUTTON	ICON	FUNCTION
Text search		Search on Google.
Voice search		Voice search on Google.
Return		Return to the previous screen.
Home		Return to the Home screen.
Multi-task		Open the list of recently used and running applications.
Apps		View all applications installed on the tablet.
Option		Open an options menu.
Close		Close the keyboard.
Drop-down		Open a drop-down menu.