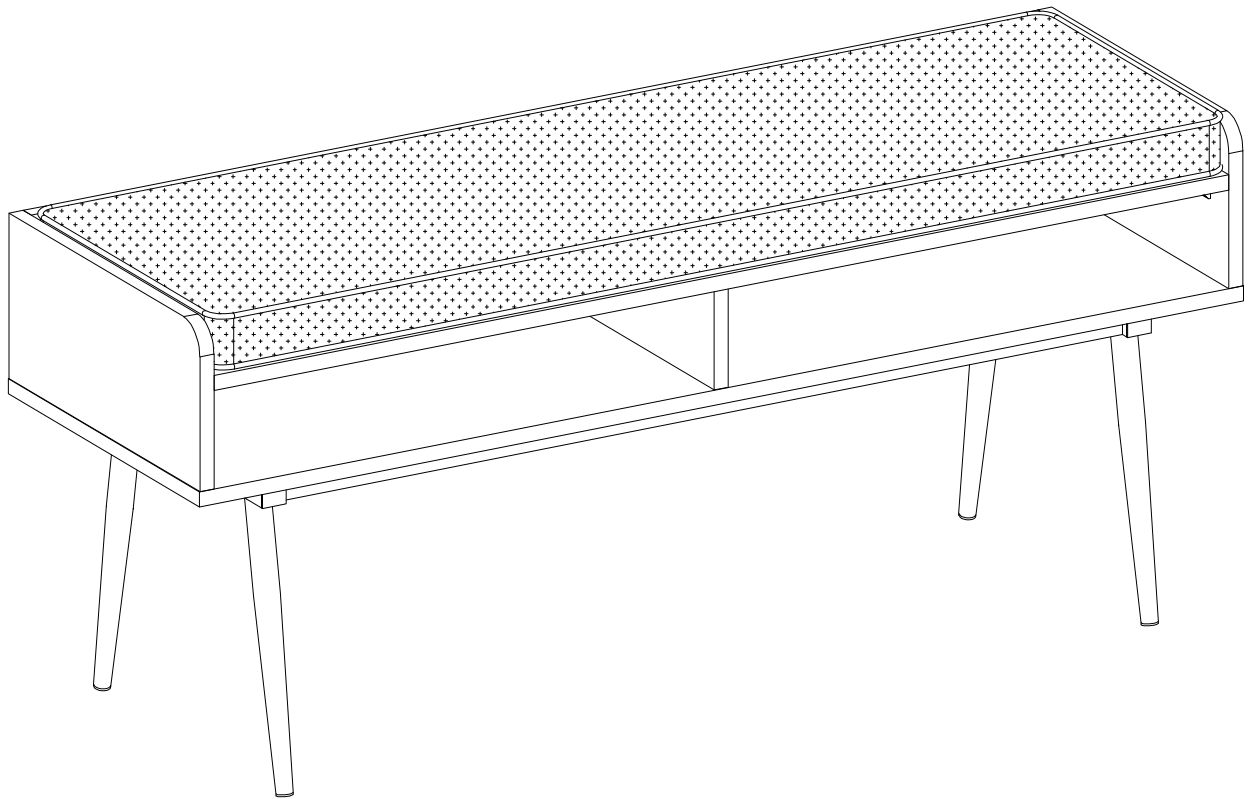


Item # : B44DIAZ

Assembly Instructions



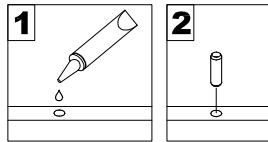
Walker Edison®

Please visit our website for the most current instructions, assembly tips, report damage, or request parts. www.walkeredison.com

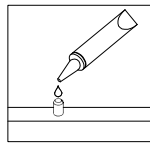
Revised 26/10/2020 (L)

General Assembly Guidelines

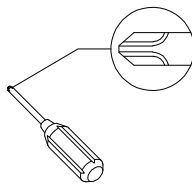
- I. Ensure that all parts and hardware are available before beginning assembly.
- II. Follow each step carefully to ensure the proper assembly of this product.
- III. Two people are recommended for ease in the assembly of this product.
- IV. The three main types of hardware used to assemble this product are: wood dowels, screws and bolts.
- V. The provided glue is to secure wood dowels in place. When first inserting dowels, locate the appropriate hole for the dowel, place a small amount of glue in the hole and insert the dowel. Wipe away excess glue immediately.



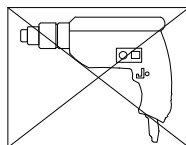
In future assembly steps when dowels are necessary to attach assembly parts together, place a small amount of glue on the end of the dowel before attaching parts together. Wipe away excess glue immediately.



- VI. A Phillips head screwdriver is required for the assembly of this product .

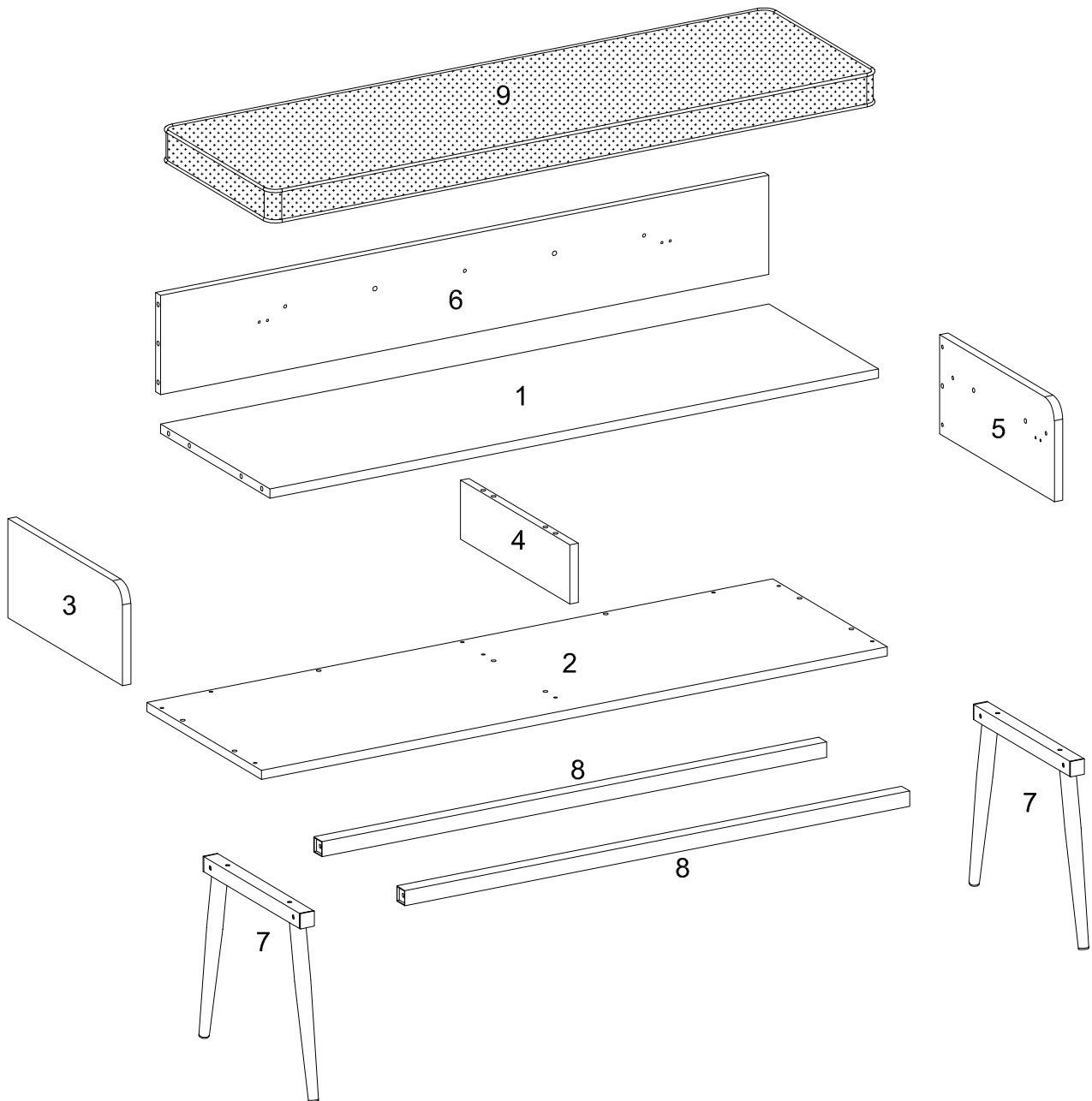


- VII. Power tools should not be used to assemble this product.





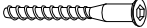

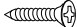

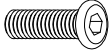

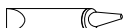


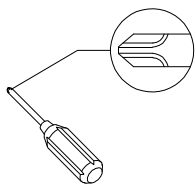
- VIII. Drill may be needed for securing product to wall.

Parts List



Hardware List

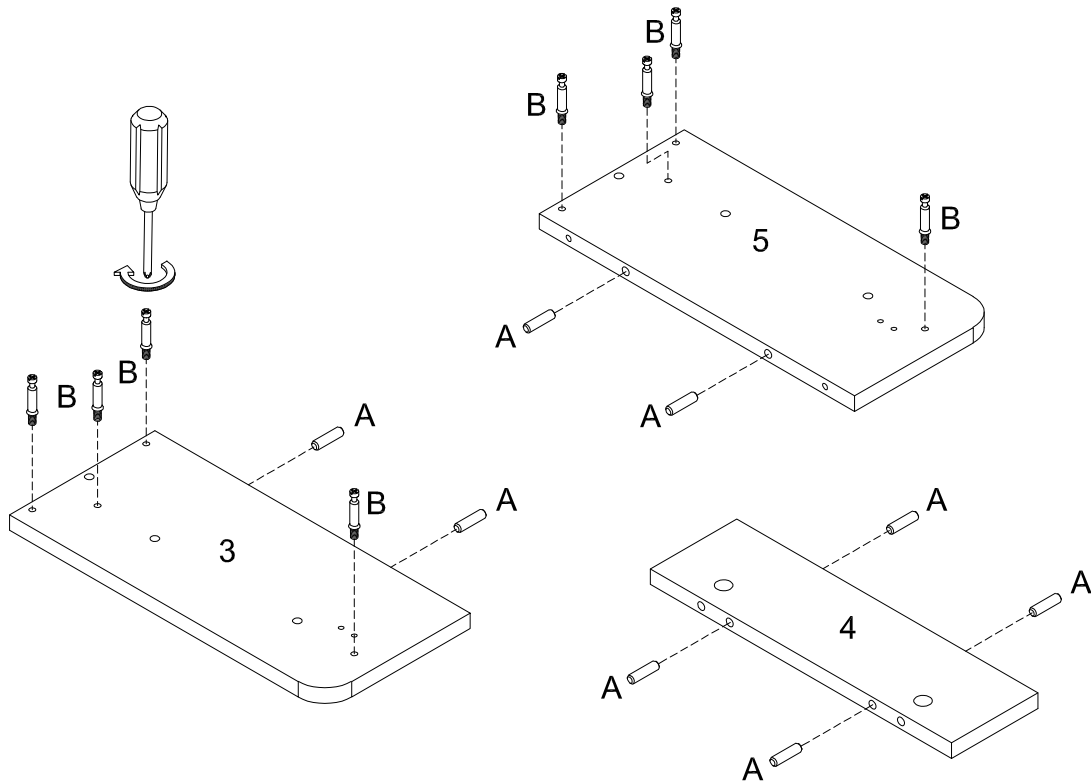
A		Ø8x30mm	Wooden dowel	18 pcs
B		Ø6x35mm	Cam bolt	13 pcs
C		Ø15x11mm	Cam lock	13 pcs
D		Ø30mm	Sticker	13 pcs
E		Ø6x50mm	Screw	9 pcs
F			Plastic wedge	4 pcs
G		Ø4x12mm	Screw	16 pcs
H		M6x45mm	Bolt	4 pcs
J		M6x35mm	Bolt	4 pcs
K		4mm	Hex Key	1 pc
L			Glue tube	1 pc



Philips head screwdriver required for assembly
(not included)

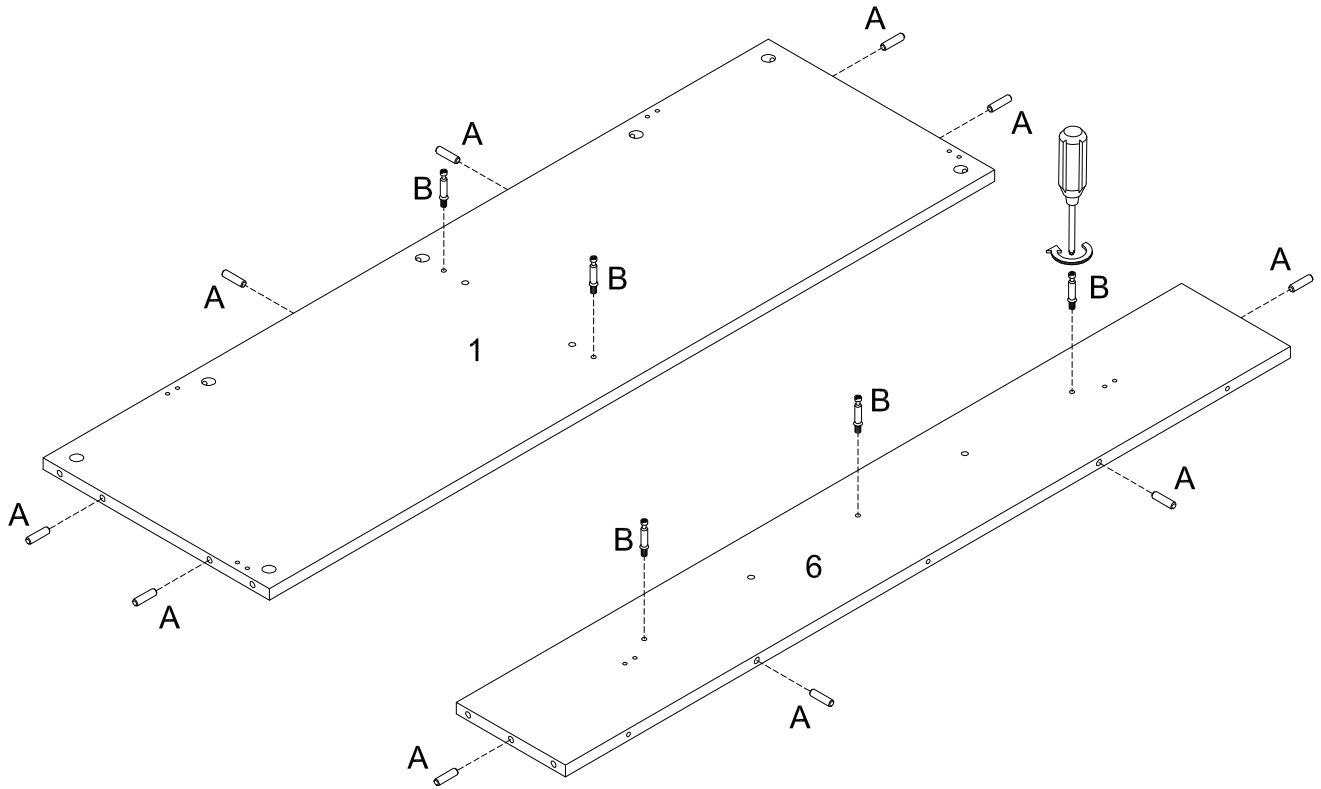
*The hardware quantities listed above are required for proper assembly.
Some extra hardware may also have been included.*

Step 1



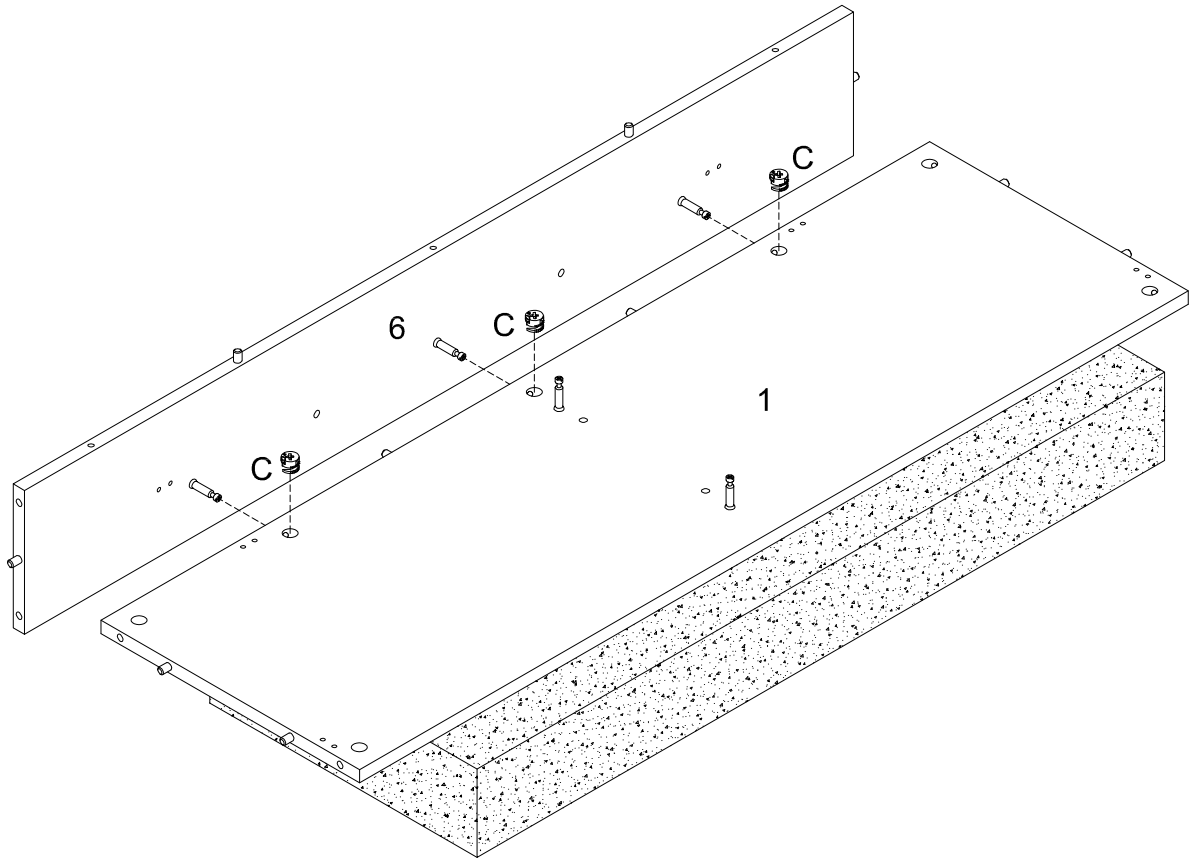
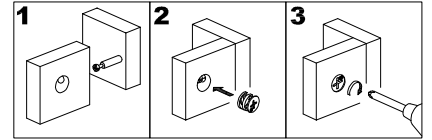
Insert wooden dowel (A) into parts (3,4,5), and secure cam bolt (B) into parts (3,5) with Philips head screwdriver as per diagram.

Step 2



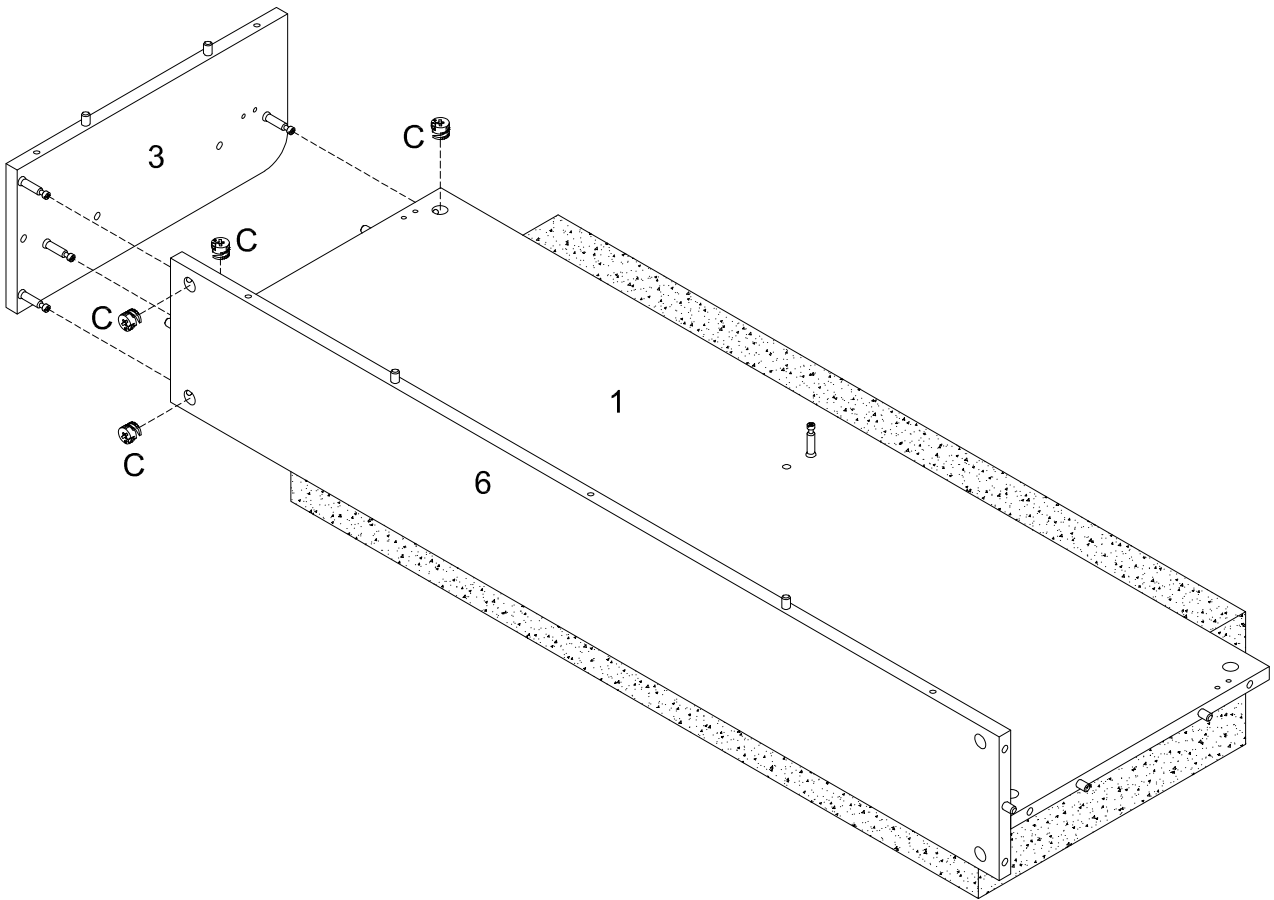
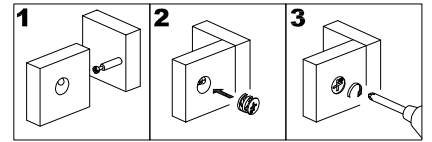
Insert wooden dowel (A) into parts (1,6), and secure cam bolt (B) into parts (1,6) with Philips head screwdriver as per diagram.

Step 3



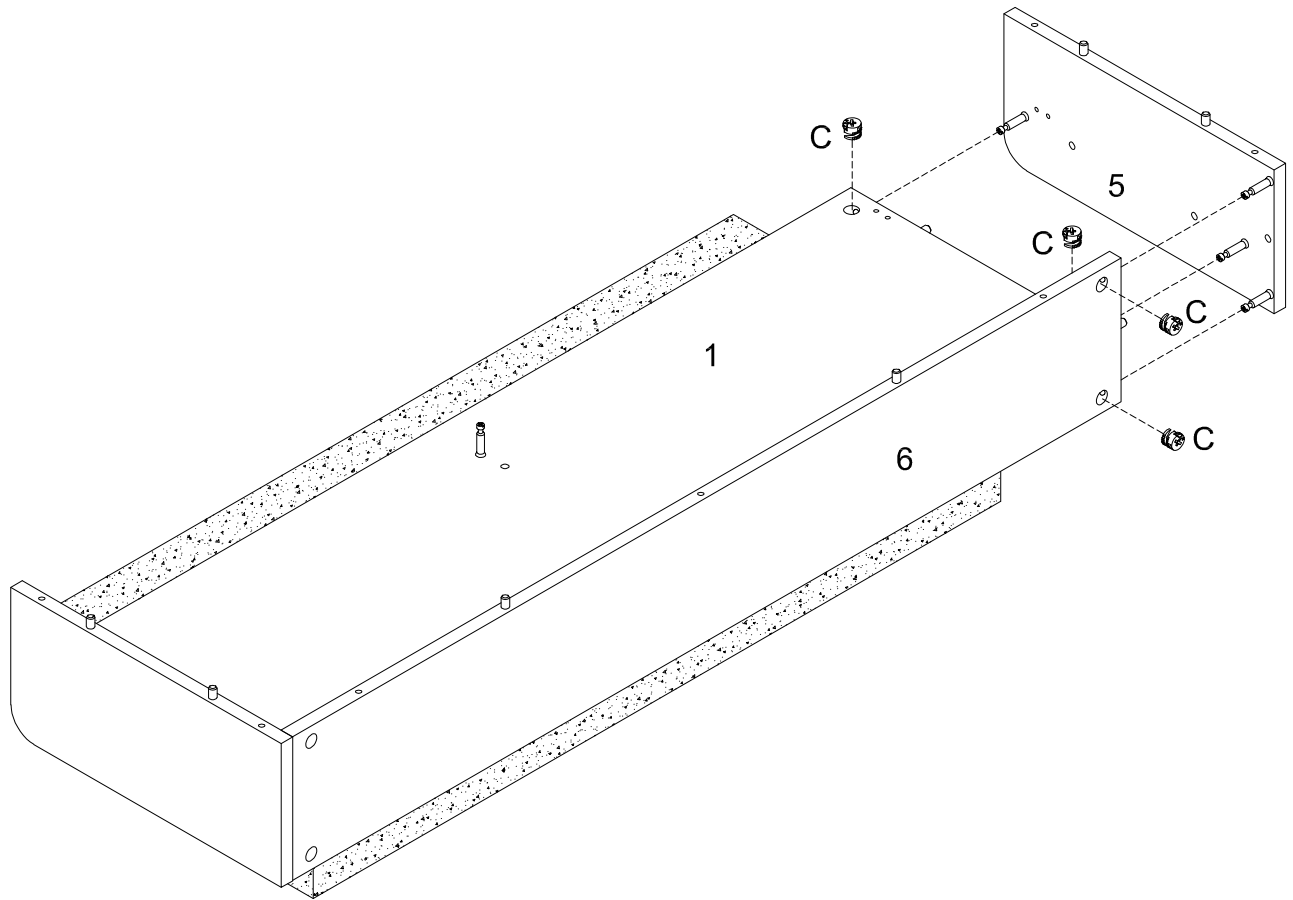
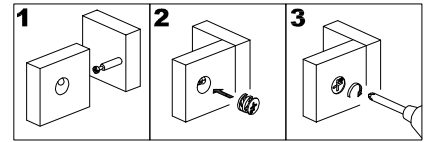
Using cam lock (C) secure part (1) to part (6) with Philips head screwdriver as per diagram.

Step 4



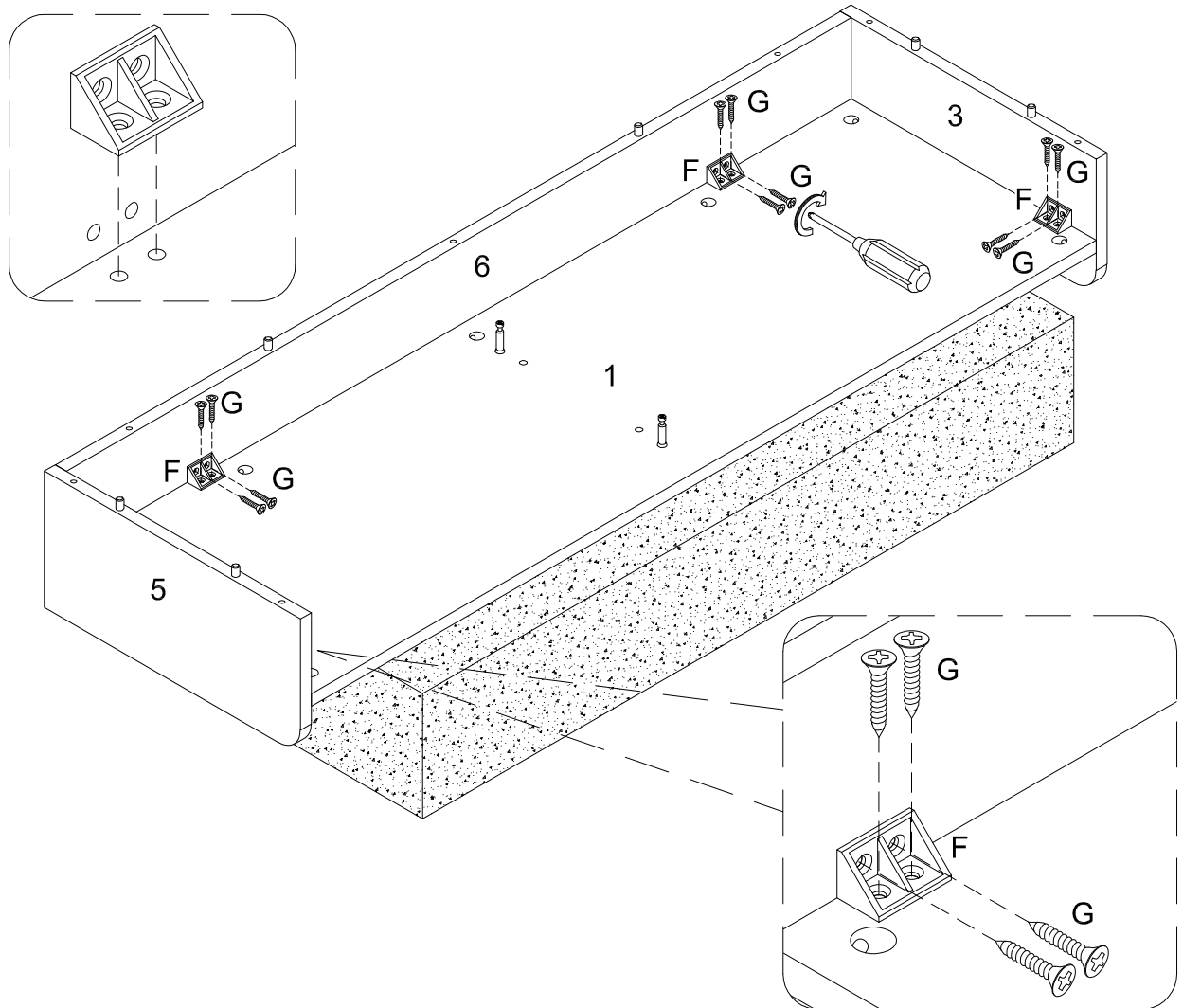
Using cam lock (C) secure part (3) to parts (1,6) with Philips head screwdriver as per diagram.

Step 5



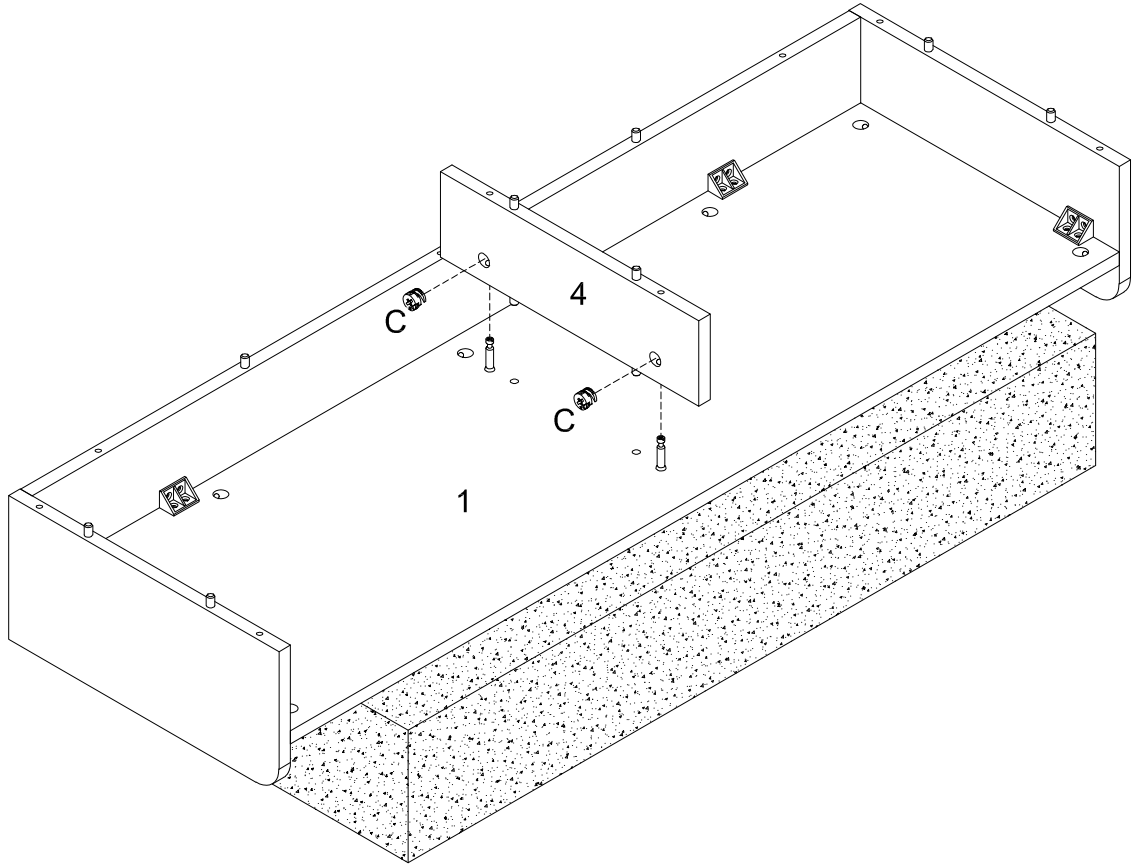
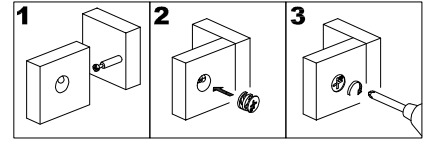
Using cam lock (C) secure part (5) to parts (1,6) with Philips head screwdriver as per diagram.

Step 6



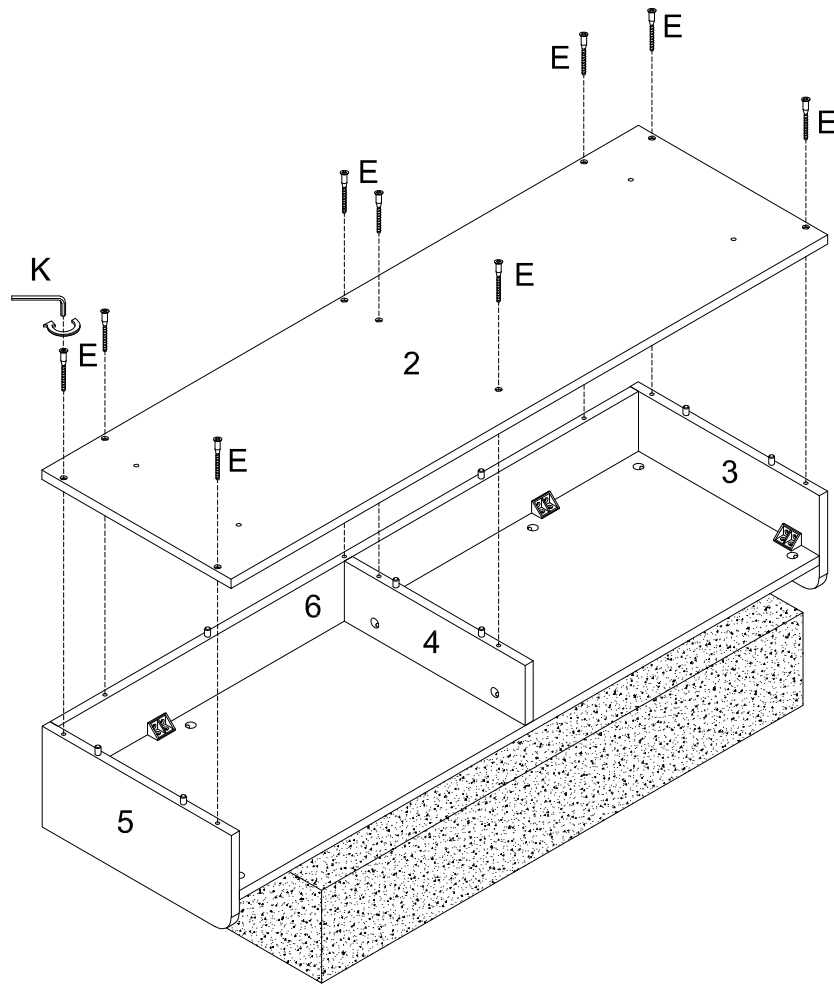
Using screw (G) secure plastic wedge (F) to parts (1,3,5,6) with Philips head screwdriver as per diagram.

Step 7



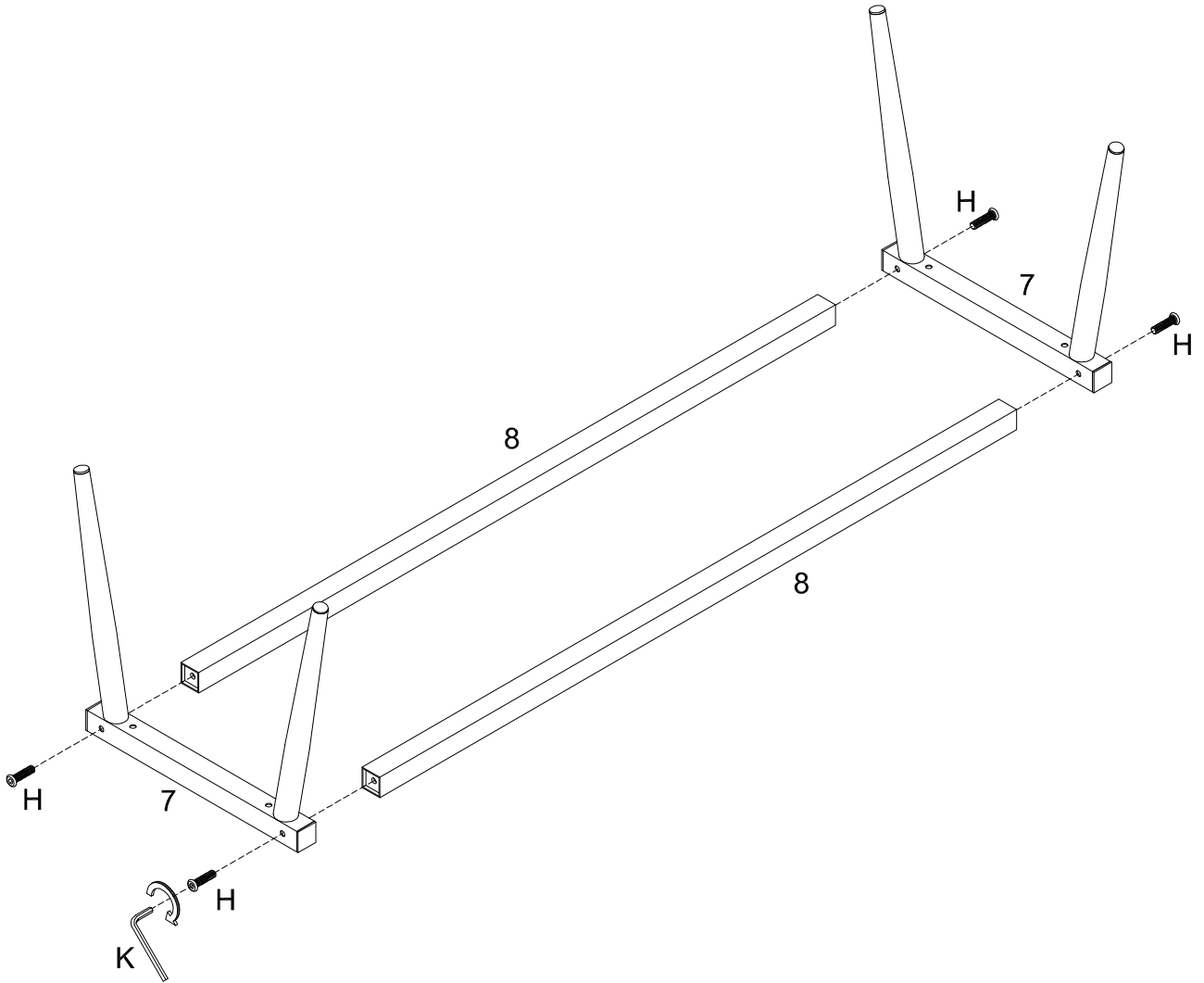
Using cam lock (C) secure part (4) to part (1) with Philips head screwdriver as per diagram.

Step 8



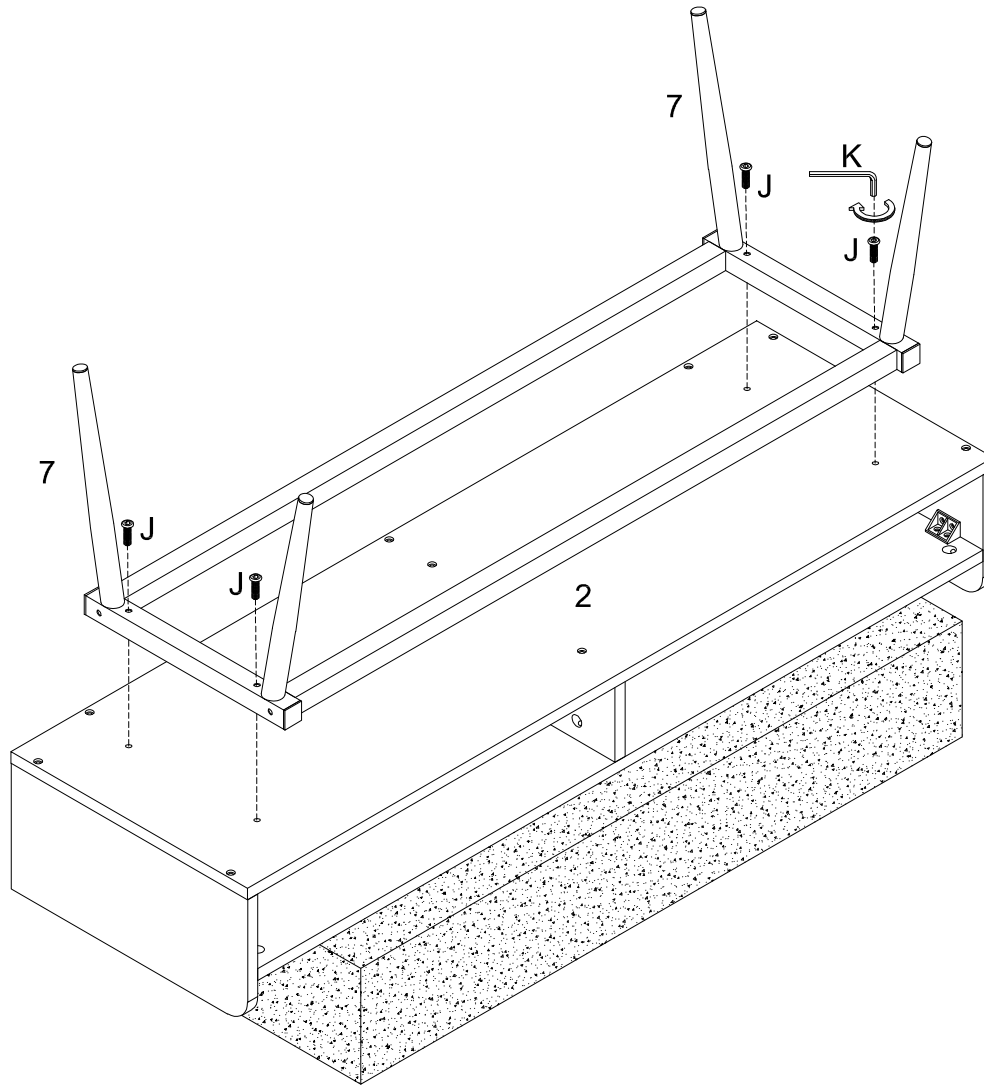
Using screw (E) attach part (2) to parts (3,4,5,6) with hex key (K) as per diagram.

Step 9



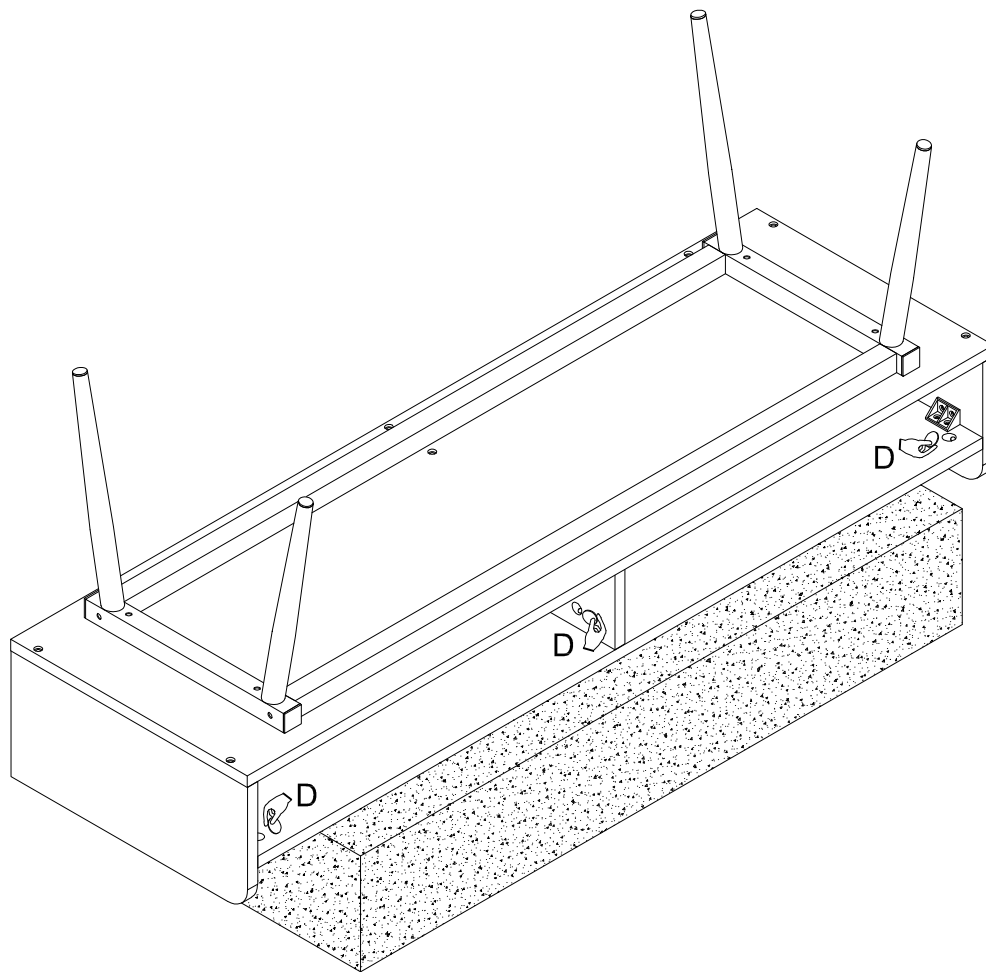
Using bolt (H) attach part (7) to part (8) with hex key (K) as per diagram.

Step 10



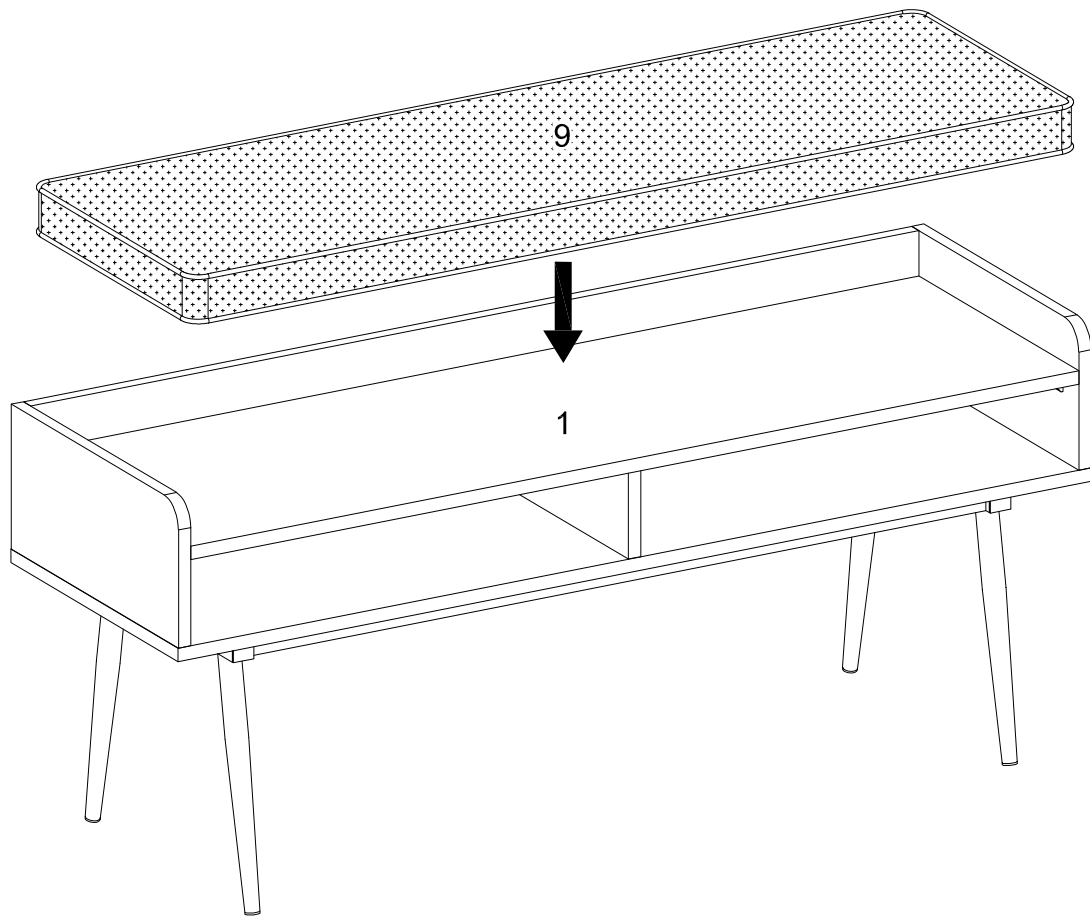
Using bolt (J) attach part (7) to part (2) with hex key (K) as per diagram.

Step 11



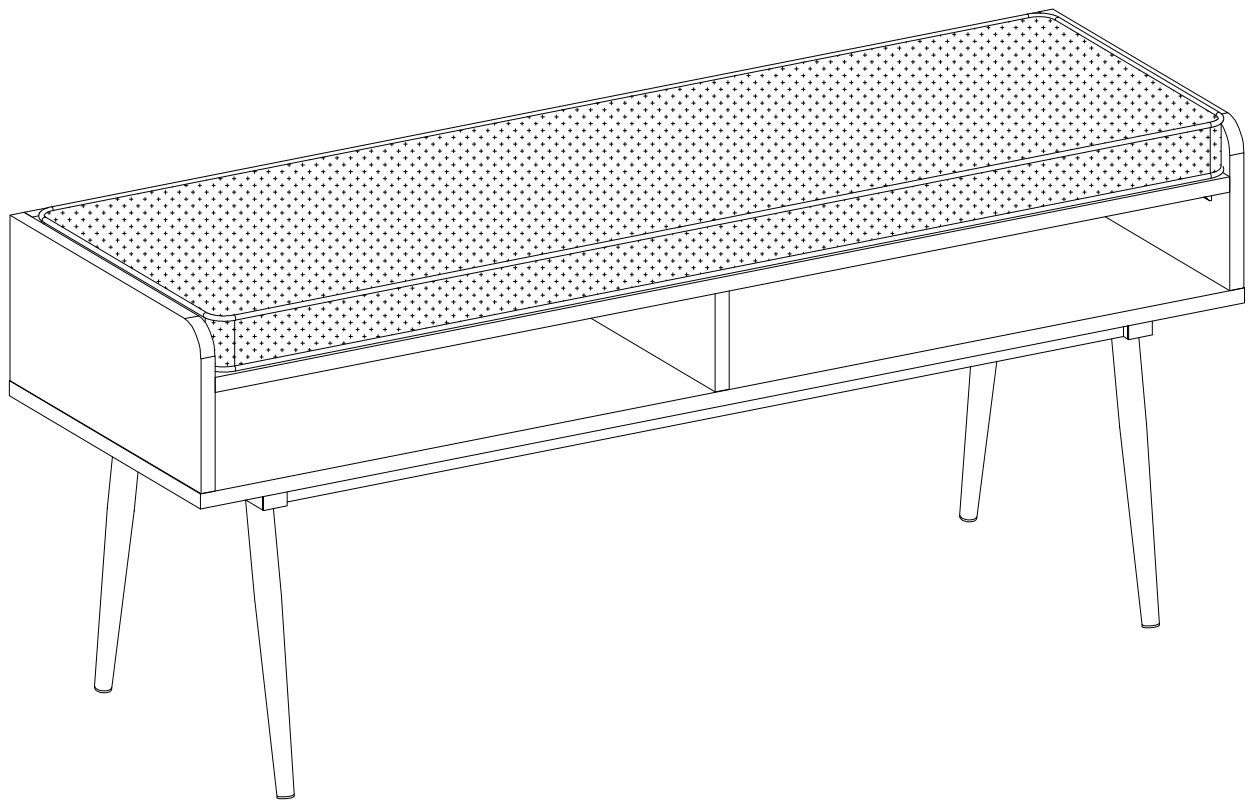
Place sticker (D) cover the holes as per diagram.

Step 12



Put part (9) on the top of part (1) as per diagram.

Step 13



Final Assembly