



4X

SINGLE
MODE



HDD

4-BAY ENCLOSURE

For 3.5" SATA I / II / III HARD DRIVE

QUICK INSTALLATION GUIDE

USB 3.0

QUICK INSTALLATION GUIDE

Version 1.5

Please visit our website for manual | www.mediasonicstore.com

Online forum | <http://forum.mediasonic.ca/>

1
STEP

Quick Installation Guide

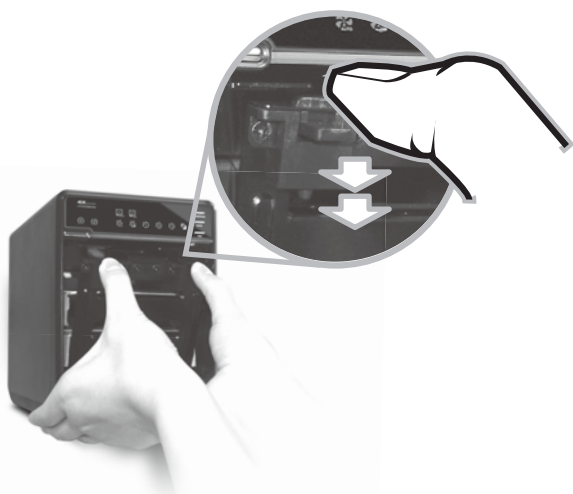
- A.** Use the enclosed handles to secure the 4 HDDs with screws in the given direction indicators.



- B.** Press the circular depression to open the cover.



- C.** Press down the rib to detach the metal frame and remove it.



- D.** Take the paper board out of the device.



- E.** Slide 4 HDDs into the chassis and make sure they are securely installed in order from up to down.



Make sure the HDD 1 is securely installed first at all times. Otherwise the PC may not recognize the device.

- F.** Adjust the metal frame that was removed back to the chassis and close the cover (based on how it was opened in Step C).



- G.** Connect the power supply to the device, plug in USB or eSATA cable in the rear panel and power on the device.

- H.** If the HDD is unformatted, you may have to initialize it by doing steps as followed: Start, Execute and key in diskmgmt.msc

1 Make sure enclosure is connected to a computer that is ON, by USB or eSata .If not enclosure will just turn off.

2 When using USB (2) USB LED will be ON.



If you see (1) eSata LED ON,



Then enclosure is set to eSata interface. Hold down

on the interface button until you see (2) USB LED ON. If not set to correct interface being used, enclosure will just Turn off.
*If using eSata (1) eSata LED will be ON. If you see (2) USB LED ON, Then enclosure interface is set to USB. Hold down on the interface button until you see (1) eSata LED ON. If not set to correct interfave being use. Enclosure will just Turn off.

3 When using eSata, you need an eSata card that supports FIS Port multiplier. Otherwise you may see only 1 Hard drive or no Hard drive at all.

4 Set the Power Sync mode to your preference.
*These are the Power Sync modes:



SYNC Button



- Blue LED** When PC is turned off, the enclosure will turn off in 15 seconds (when you turn on the PC you will have to turn on the enclosure)
- Orange LED** When PC is turned off, the enclosure will go into sleeping mode (When you turn on the PC, the enclosure will turn on automatically)
- OFF(No LED)** No Power sync, Enclosure stays on when you turn PC off

hold the Sync button to switch between them

A FRONT PANEL

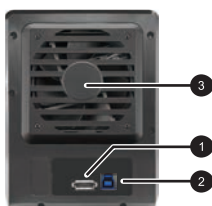


DESCRIPTIONS

- 1** Blue power on
- Orange** standby
- 2** eSATA on/off line
- 3** USB on/off line
- 4** eSATA in use
- 5** USB in use
- 6** Fan speed level 1
- 7** Fan speed level 2
- 8** Fan speed level 3
- 9** Synchronization
 - 3 modes :
 - Blue When the PC is off, the device goes off in 15 seconds.
 - Orange When the PC is off, the device goes to sleeping mode.
 - Off Synchronization is off.
- 10** Power Prees 3 seconds to power off the device.
- 11-14** HDD1 / HDD2 / HDD3 / HDD4 active
- 15** Smart Fan automatic mode
- 16** Smart Fan manual mode
- 17** Interface switch

HOLD Sync Button to switch between Sync Modes

B REAR PANEL



DESCRIPTIONS

- 1** e-SATA port
- 2** USB port
- 3** Fan

C RIGHT SIDE PANEL



DESCRIPTIONS

- 1** DC Jack
- 2** DC Power

D HDD HANDLE



E SAFETY COVER



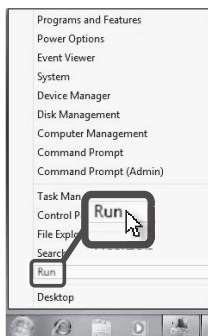
F METAL FRAME



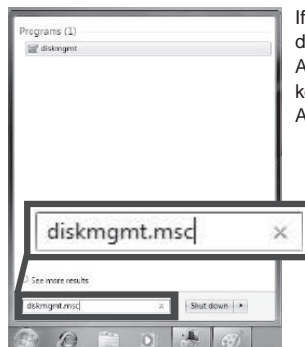
HOLD it Down to Switch between interface
 or LED will light up accordingly

- 18** Synchronization mode switch
- 19** Smart fan Switch : auto, manual and fan speed from level 1 to level 3
Button 17 and 18 need to be pressed for 3 seconds to switch the device's mode. This design will prevent accidental execution of these functions.

3 STEP Windows

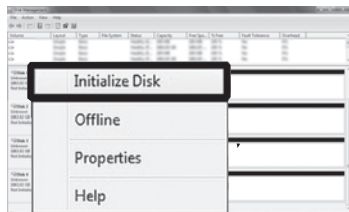


Move the cursor of your mouse to the bottom left corner and right click "Run".

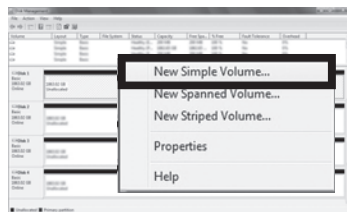


If the HDD is uninitialized, you may have to initialize it by doing steps as followed:
At first click "Start", "Execute" on your PC and key in "diskmgmt.msc".
After that please press "RETURN" key.

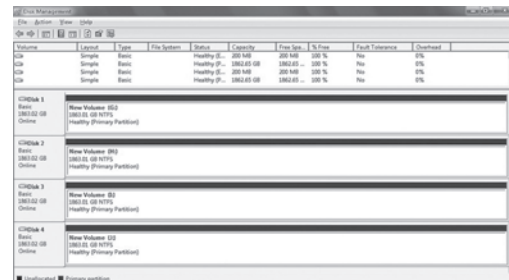
1. Start disk initialization.



2. Create new partition and format disk.



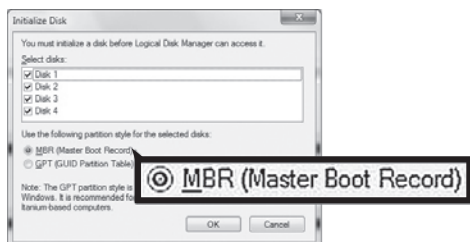
3. HDD format completed



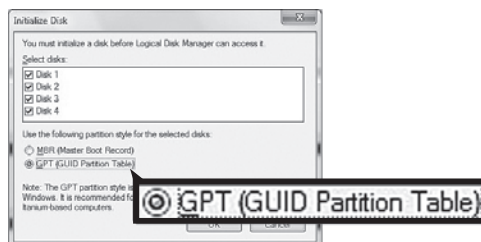
4 STEP Start disk initialization.

Note: Please enable GPT if the total capacity is more than 2TB and enable MBR if the total capacity is less than 2TB.

Activate MBR if total volume is less than 2TB



Activate GPT if total volume is more than 2TB



5 STEP Mac OS X

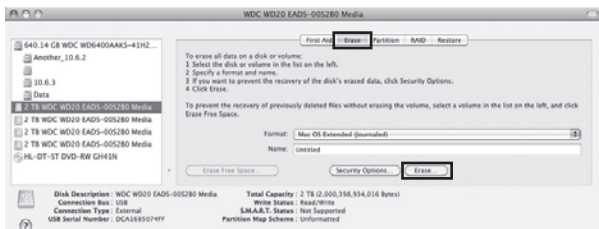
1. Click Disk Utility icon.



2. HDD initialize...



3. Click Erase



4. Click Erase



5. HDD format in process



6. Format completed





Trouble Shooting

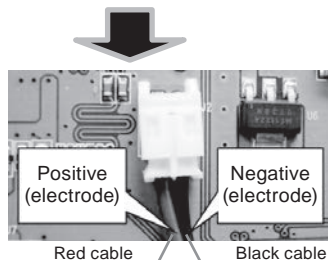
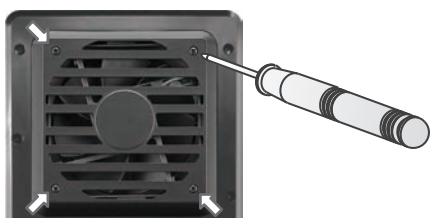
A. If the device (4 HDDs installed) is connected to the PC with eSATA cable and the SATA HDD icon does not come out in 4, please check if the eSATA interface card supports Port Multiplier or update the aSATA driver version.

B. If the device (4 HDDs installed) takes too long to initial, please check if the HDD is securely installed or update the eSATA driver version.

C. If the transfer rate is not normal, please check if the SATA HDD jumper is set up in 1.5 or 3.0Gbps.

D. If there is noise with the fan, unscrew and take out the fan cover, pull out the power cord, clean the fan and assemble it back.

E. If the noise is still present, change the device with another fan of size 80x80x20mm 2 pins. Otherwise send the device back to the retail store.



F. If you forget to attach the metal frame before you close you cover, simply press the rib as the attachment down in the cover. The cover will slowly release and open outwards. Please do not attempt to pull the cover with something sharp.



G. If the fan stops working, do not dismantle it. Please send back to the retail store immediately.

H. Operation Environment

- Temperature 0°C~ 50°C
- Humidity 0%~ 90% R.H.

I. The heated air would flow out from the fan based on forced convection process and cool down the chassis' internal temperature.

J. To take the the HDD out from the device, slightly press down the handle and pull it out.



Note

A. USB port of your PC must support power-off function so that the device would go to sleeping mode. Setting up motherboard's (power management) in S3 is strongly recommended. For more details, please refer to user guide of motherboard BIOS setting.

B. Smart fan controlled by the built-in thermal sensor and it comes with 2 modes (auto / manual) and 3 levels of speed :

Low	below 45°C 1200rpm
Medium	45°C ~54°C 1800rpm
High	higher than 55°C 2500rpm

C. Alternative and optional USB or e-SATA interface selection for 2 working PC but only 1 interface can be used at one time. And interface selection is only for Macintosh to Macintosh or / Windows to Windows

D. Simply press the power button to power the device on and press the button for 3 seconds to power off the device.

E. Operation System : Windows 11
Mac OS X 10.8 or later

F. Maximum addressable capacity: visit Mediasonic website for most updated information

G. Hot-plug for USB / e-SATA interface

H. USB1.1/2.0/3.0 compatible

I. e-SATA transfer data up to 1.5~6.0Gbps

Low speed	1.5 Mbps
Full speed	12 Mbps
High speed	480 Mbps
Super speed	5 Gbps



Please visit our website for manual

www.mediasonicstore.com