

Installation Instructions

| | |
|-----------------------|---|
| Model: | 2007-2018 Jeep Wrangler JK & Wrangler Unlimited JKU |
| Description: | OEM Dash Speakers or OEM Soundbar Speakers Upgrade |
| Part Number: | JS1-216JK |
| Assembly Time: | 120 Min (2-Hours) |

It is always a best practice to disconnect your negative battery terminal prior to any electronics installations to avoid damaging the vehicle's electrical system. Before you begin, read through these instructions and check that all parts are present.

This installation may require special skills and tools to complete, it may be necessary to seek a trained installation technician to complete this installation. Please note that MB Quart cannot assume any responsibility for damage resulting from incorrect installation.

| JS1-216JK Parts List | | |
|----------------------|--|-----|
| No. | Component Name | Qty |
| 1 | 6.5in Midrange Woofers | 2 |
| 2 | Tweeters | 2 |
| 3 | Speaker/Crossover Harness | 2 |
| 4 | 6.5in Gaskets | 2 |
| 5 | Tweeter Adapter Plates (2015-2018 Wrangler JK/JKU) | 2 |
| 6 | Convertible Tweeter Bridge Adapters (2007-2014 Wrangler JK/JKU Soundbar) | 2 |

| Tools Required | |
|----------------|---------------------|
| 1 | Bojo or Panel Tool |
| 2 | Philips Screwdriver |
| 3 | 7mm & 10mm Socket |
| 4 | Ratchet |
| 5 | T15 & T20 Torx |
| 6 | Extensions |

Lower Front Speaker Disassembly (2007-2018)

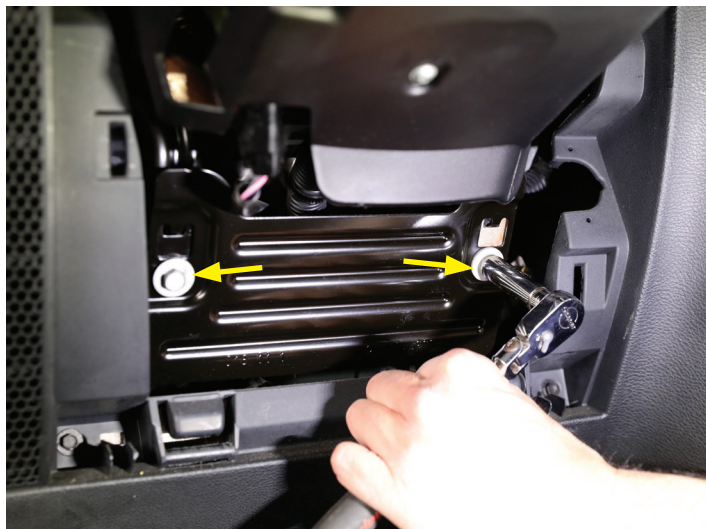
- Remove the driver side dash end caps with a panel removal tool.



- Remove Driver side knee bolster panel using your panel removal tool from the top of the panel.



- Remove (2) 10mm bolts from the metal steering column knee bolster shield and remove it.

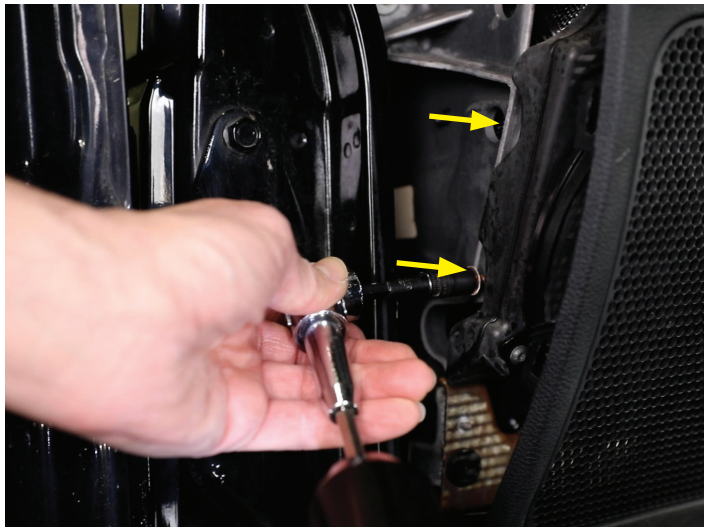


Lower Front Speaker Disassembly (2007-2018)

- Remove (2) 7mm bolts from drivers side lower dash panel. (2007-2011 model years will have (4) 7mm bolts)



- Remove the (2) 7mm bolts securing the driver's side speaker pod to the dash from the behind the side dash end cap.



- Remove (1) 10mm bolt from the underside of the dash speaker enclosure.



Lower Front Speaker Disassembly (2007-2018)

- Disconnect the speaker connector from the speaker pod.



- Remove the speaker and pod from the driver's side dash by carefully pulling the dash panel away from the dash towards the rear of the vehicle.



- Remove the Passenger side dash end cap with a panel removal tool.



Lower Front Speaker Disassembly (2007-2018)

- Remove the passenger side dash glove box by lowering the glove box and pressing both sides to release past the dash panel.

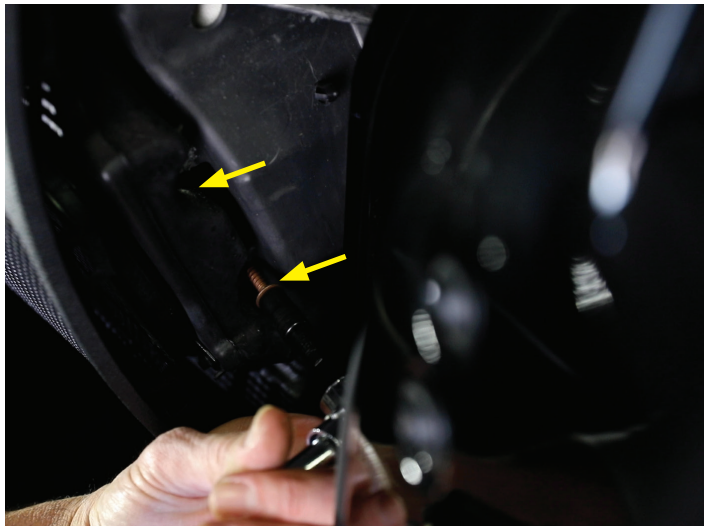


- Remove the (2) 7mm from the passenger side lower dash below the glove box opening.

(2007-2011 model years will have (4) 7mm bolts.)



- Remove the (2) 7mm bolts securing the passenger's side speaker pod to the dash from the behind the dash end cap.



Lower Front Speaker Disassembly (2007-2018)

- Remove the 10mm bolt from the underside of the speaker enclosure.



- Disconnect the passenger side speaker wire connector.



- Remove the passenger side speaker and enclosure by sliding it towards the center of the vehicle into the glove box opening.



Tweeter Disassembly (2007-2014)

- Using a plastic panel tool, remove the tweeter from the frog eye housing and disconnect.



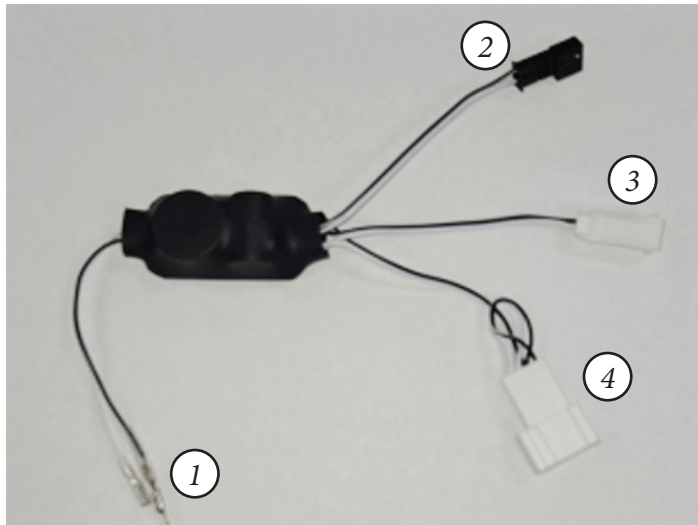
Repeat these steps for the other side

JS1-216JK Tweeter Installation (2007-2014)

- Install your new MB Quart tweeter into the tweeter housing by aligning the three locking tabs. The MB Quart logo should be at the bottom of the housing.



- Connect the supplied crossover to the OEM speaker connector and the new MB Quart tweeter. Using the correct connectors for your application, secure the crossover and all unused wires with zip ties inside the dash panel through the dash with the housing removed.



- Connector 1 – To MBQ tweeter +/-
- Connector 2 – To OEM connector
(Used in 2007 to 2014 jeep JK)
and tweeter bridge connection for the
2007-2014 Jeep soundbar speaker.
- Connector 3 – To OEM tweeter connector
(Used in 2015 to 2018 Jeeps)
- Connector 4 – To OEM tweeter connector (Do Not Use)

Repeat these steps for the other side

JS1-216JK Installation

- Remove the (3) screws securing the OEM speaker from the factory enclosure.



- Remove and disconnect the OEM speaker.



- Remove the convertible tweeter bridge adapter from the JS1-216 woofer by removing the four Phillips screws that secure it to the speaker mounting ring.



JS1-216JK Installation

- Apply the supplied gasket to the new MB Quart speaker.



JS1-216JK Installation

- Connect the OEM speaker wire to the new MB Quart speaker. For this installation the tweeter bridge wire should be secured to the OEM wire harness to avoid rattles.



- Secure the new MB Quart speaker into the enclosure using the OEM hardware.



Repeat these steps for the other side

Tweeter Disassembly (2015-2018)

- Remove the plastic tweeter grill cover from the dash using a plastic panel removal tool to avoid damage.

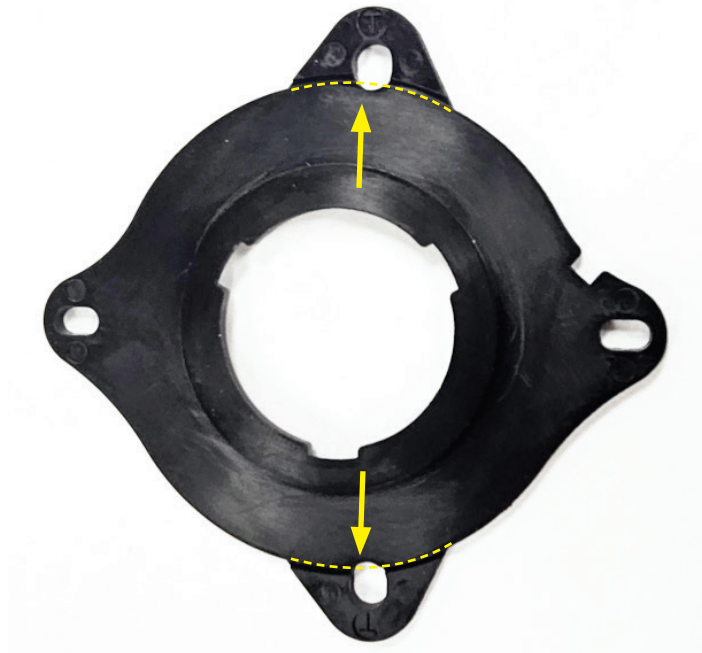


- Remove the (2) 7mm bolts securing the OEM speaker to the dash. Remove and disconnect the speaker.

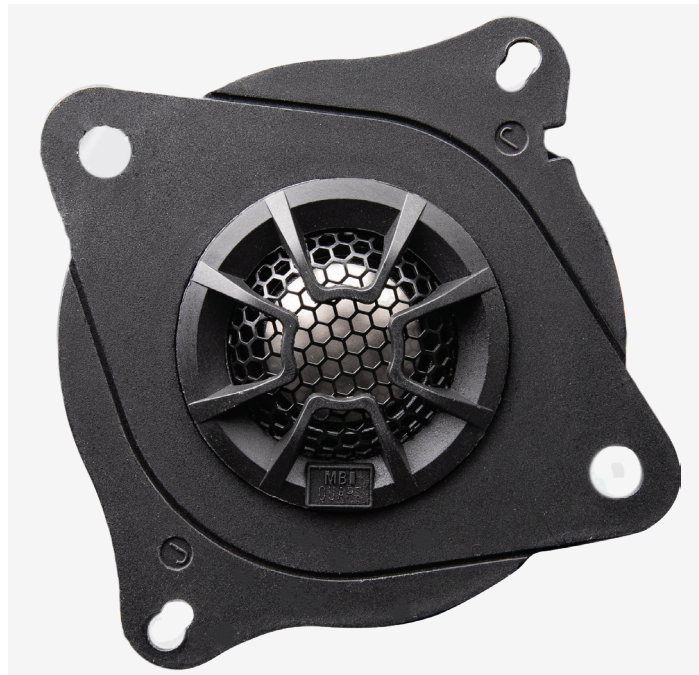


JS1-216JK Tweeter Installation (2015-2018)

- Remove the unused mounting locations from the tweeter adapter. On the underside of the adapter, you will find the guideline to remove the extra tab. The “T” tabs need to be removed for the Jeep JK application. (Using a razor to score this line may help with a smooth break away.)

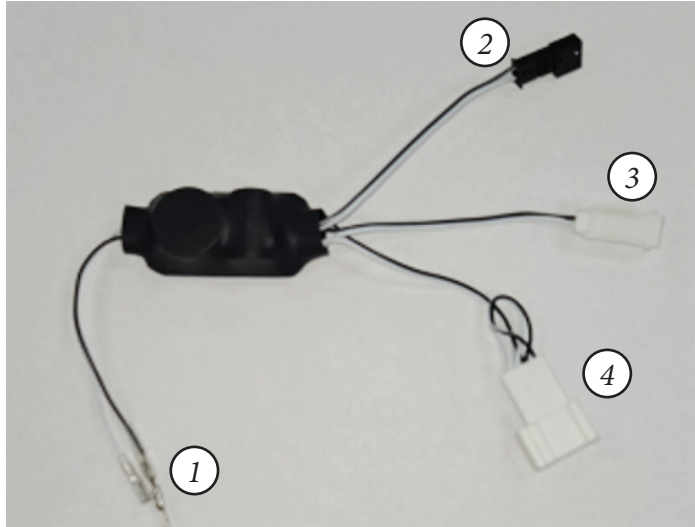


- Install the new MB Quart tweeter into the adapter plate, by lining the three locking tabs up and pressing the tweeter into place.



JS1-216JK Tweeter Installation (2015-2018)

- Connect the supplied crossover to the OEM speaker connector and the new MB Quart tweeter. Using the correct connectors for your application - secure the crossover and all unused wires with zip ties inside the dash panel through the dash with the housing removed.

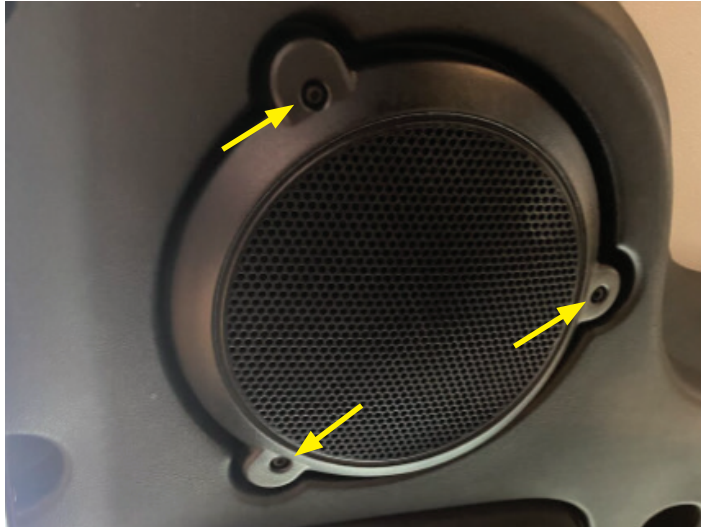


- Connector 1 – To MBQ tweeter +/-
- Connector 2 – To OEM Tweeter Connector
(Used in 2007 to 2014 Jeep JK)
- Connector 3 – To OEM Tweeter Connector
(Used in 2015 to 2018 Jeeps)
- Connector 4 – (Do Not Use)

Repeat these steps for the other side

Disassembly of OEM Soundbar (2007-2014)

- Remove the (3) T15 torx screws securing the OEM speaker into the soundbar.



- Disconnect and remove the OEM speaker.



Repeat these steps on other side of soundbar

JS1-216JK Installation in OEM Soundbar (2007-2014)

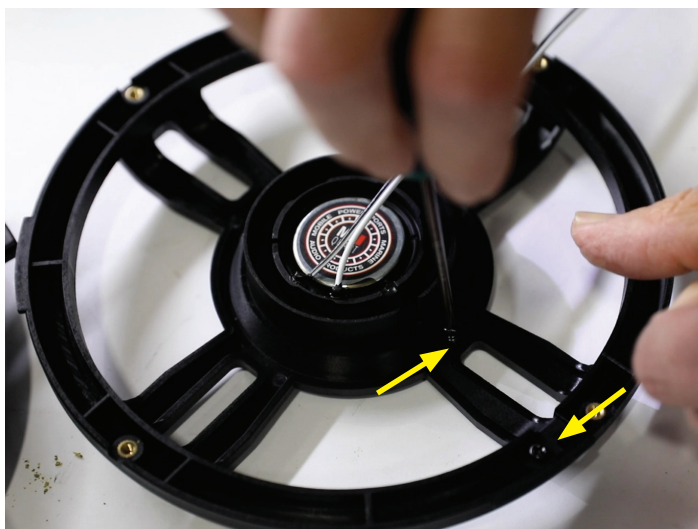
- Remove the convertible tweeter bridge adapter from the JS1-216 woofer by removing the four Phillips screw that secure it to the speaker mounting ring.



- Install the MB Quart tweeter into the convertible tweeter bridge adapter by lining up the three locking tabs and press into place.



- Remove the tweeter wire channel cover from the convertible tweeter bridge adapter by removing the (2) small Phillips screws.



JS1-216JK Installation in OEM Soundbar (2007-2014)

- Route the tweeter wire in the convertible tweeter bridge adapter wire channel.



- Resecure the wire cover to the convertible tweeter bridge adapter using the two Phillips screws previously removed.

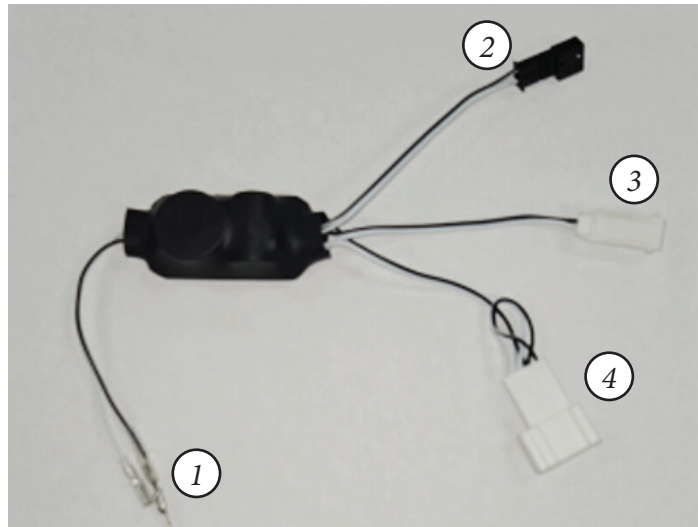


- Reattach the convertible tweeter adapter to the speaker frame using the four Phillips screws previously removed. (You will see a wire channel on the speaker frame to route the wire through.)



JS1-216JK Installation in OEM Soundbar (2007-2014)

- Connect the supplied crossover to the new MB Quart speakers tweeter bridge connector and the new MB Quart tweeter. Using the correct connectors for your application - secure the crossover and all unused wires with zip ties.



- Connector 1 – To MBQ tweeter +/-
- Connector 2 – To OEM tweeter on MBQ 6.5" speaker
- Connector 3 – To OEM tweeter connector (Do Not Use)
- Connector 4 – To OEM tweeter connector (Do Not Use)

- Apply the supplied gasket to the new MB Quart speaker.



JS1-216JK Installation in OEM Soundbar (2007-2014)

- Connect the OEM speaker wire to the MB Quart JS1-216JK woofer and install.



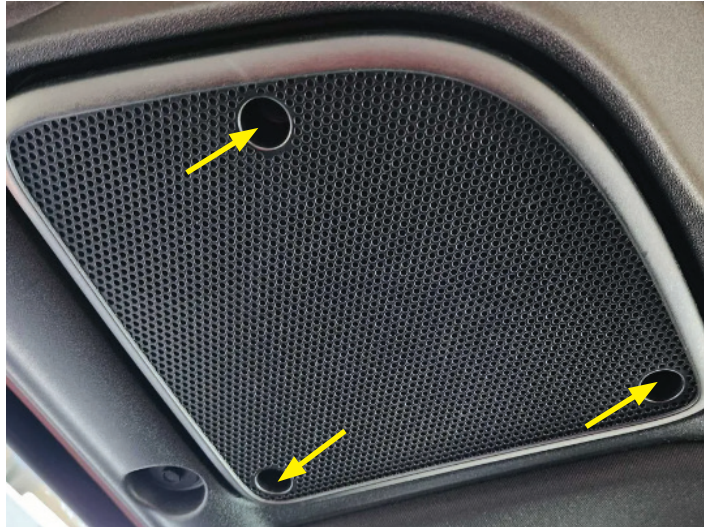
- Install OEM grill with the OEM T15 hardware.



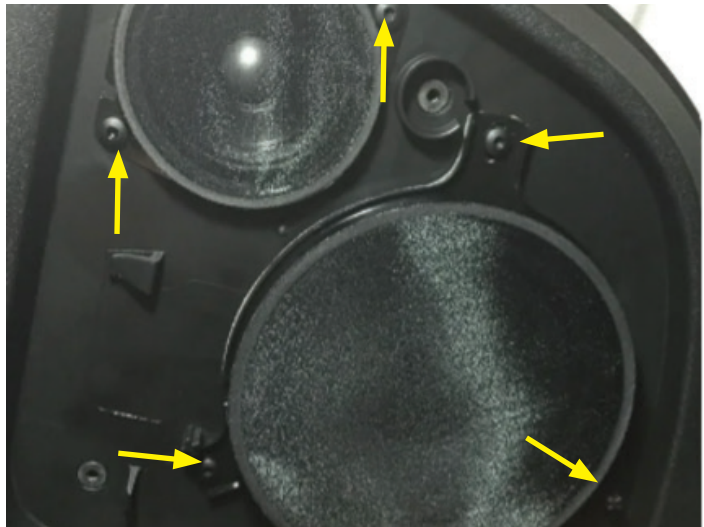
Repeat these steps on other side of soundbar

Disassembly of OEM Soundbar (2015-2018)

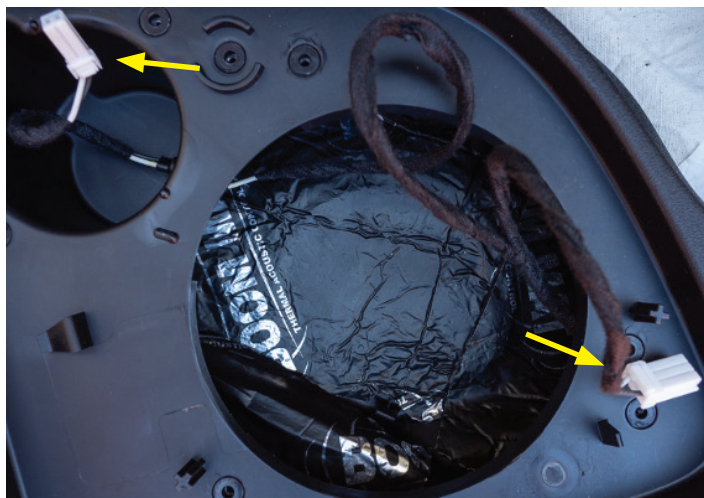
- Remove the (3) T20 Torx screws securing the grill. Remove the grill and set aside.



- Remove the (5) T20 Torx screws securing the OEM speakers.



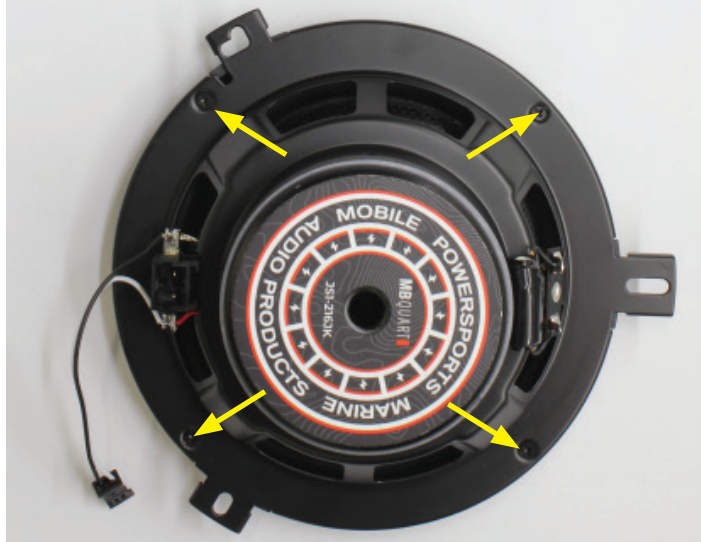
- Disconnect and remove the OEM speakers.



Repeat these steps on other side of soundbar

JS1-216JK Installation in OEM Soundbar (2015-2018)

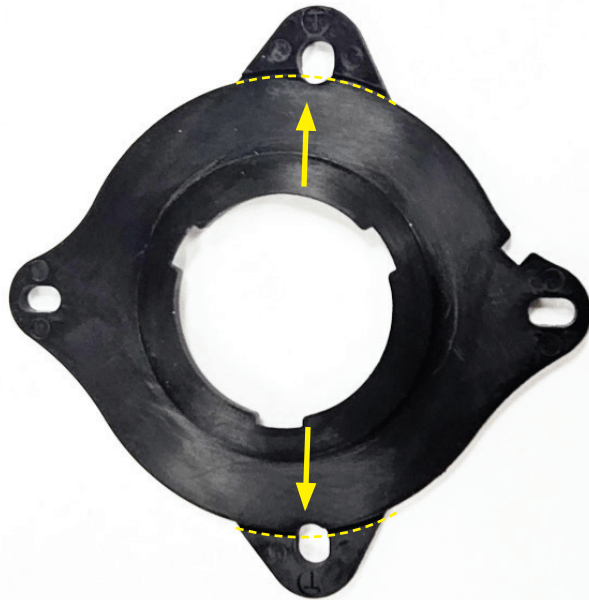
- Remove the convertible tweeter bridge adapter from the JS1-216 woofer by removing the four Phillips screw that secure it to the speaker mounting ring.



- Connect the OEM speaker wire directly into the MB Quart speaker and reinstall into the soundbar using the OEM T20 hardware.

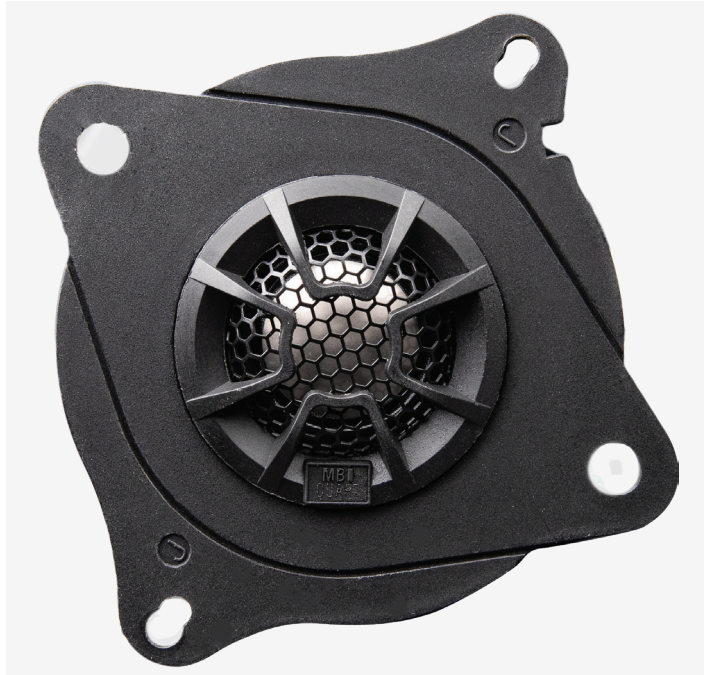


- Remove the unused mounting locations from the tweeter adapter. On the underside of the adapter, you will find the guideline to remove the extra tab. The "T" tabs need to be removed for the Jeep JK application. Using a razor to score this line may help with a smooth break away.

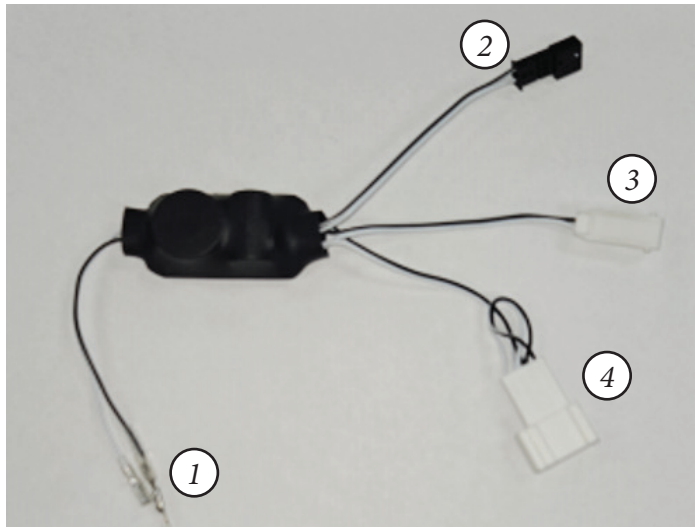


JS1-216JK Installation in OEM Soundbar (2015-2018)

- Install the new MB Quart tweeter into the adapter plate by lining the three locking tabs up and pressing the tweeter into place.



- Connect the supplied crossover to the OEM speaker connector and the new MB Quart tweeter. Using the correct connectors for your application - secure the crossover and all unused wires with zip ties.



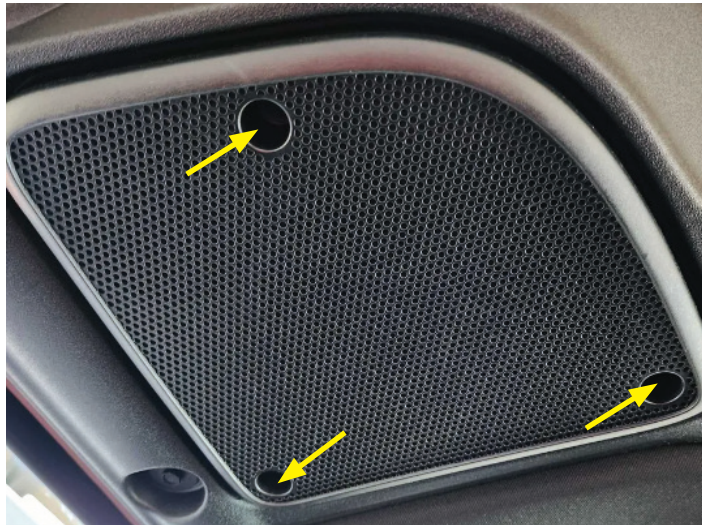
- Connector 1 – To MBQ tweeter +/-
- Connector 2 – To 2007-2014 OEM tweeter connector (Not Used)
- Connector 3 – To OEM tweeter connector (Used in 2015-2018 Jeeps)
- Connector 4 – To OEM tweeter connector (Do Not Use)

JS1-216JK Installation in OEM Soundbar (2015-2018)

- Install the new MB Quart tweeter into the OEM location using the OEM T20 hardware.



- Reinstall the OEM grill using the OEM T20 hardware.



Repeat these steps on other side of soundbar

FCC Notification

This equipment has been tested and found to comply with the limits for a Class B digital device, pursuant to Part 15 of the FCC Rules. These limits are designed to provide reasonable protection against harmful interference in a mobile installation. This equipment generates uses and can radiate radio frequency energy. If not installed and used in accordance with the instructions, this equipment may cause harmful interference to radio communications. There is no guarantee that interference will not occur in a particular installation.

WARNING: Changes or modifications not expressly approved by the party responsible for compliance could void the user's authority to operate the equipment.

This equipment complied with FCC radiation exposure limits set forth for an uncontrolled environment. This equipment should be installed and operated with a minimum distance of 20cm between the radiator and your body.



MBQuart.com
#MUSIC DEFINED

WARRANTY

Maxxsonics, LLC. warrants this product, to the original consumer purchaser, to be free from defects in material and workmanship for a period of one (1) year from the date of purchase. Maxxsonics, LLC. will, at its discretion, repair or replace defective products during the warranty period. Components that prove to be defective in materials and workmanship under proper installation and use must be returned to the original authorized Maxxsonics, LLC. retailer from where it was purchased. A photocopy of the original receipt must accompany the product being returned. The costs associated with removal, re-installation, and freight are not the responsibility of Maxxsonics, LLC. This warranty is limited to defective parts and specifically excludes any incidental or consequential damages connected therewith. To view the full warranty, please visit the website.

MB Quart products are designed and engineered in the USA by

MAXXSONICS®

www.maxxsonics.com

JS1-216JK REV0.5