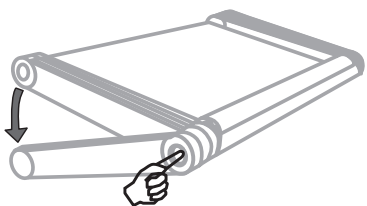


How to install?

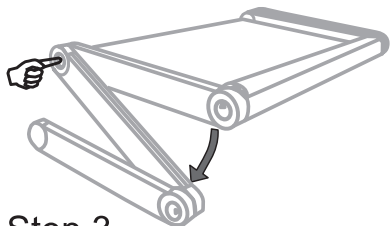
Step 1

Press axis switch to adjust degree of the first leg.



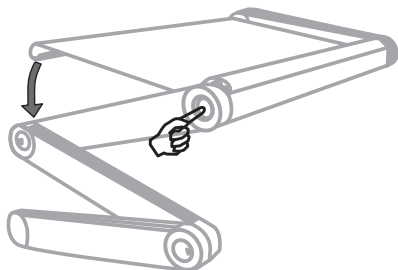
Step 2

Press axis switch to adjust degree of second leg.



Step 3

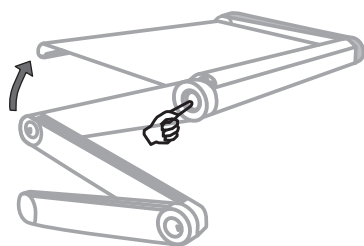
Press axis switch to adjust degree of the table. If you want to use different angles, you can adjust angle by pressing axis switches



How to fold?

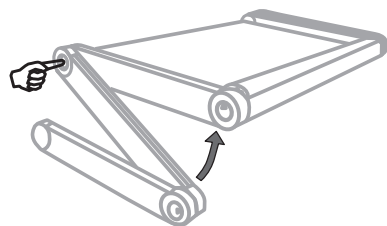
Step 1

Press table axis switch to level with second leg.



Step 2

Level first and second leg.



Step 3

After all legs are level with table it is folded.

