

WIRED
VERTICAL
MOUSE



WIRED VERTICAL MOUSE

Thank you for choosing this vertical mouse. Please read the user manual carefully before and when you use this product.

Package content

Mouse----- x1
Manual ----- x1
CD (optional)----- x1

Compatibility

Compatible with Windows XP, Windows Vista, Windows 7, Windows 8,
Windows 10, mac OS (Only basic function, no software available)

Keys Function



①	Left click
②	Right click
③	DPI button
④	Scroll wheel
⑤	Forward
⑥	Backward
⑦	Rotating shaft

***MAX 20 degree adjustment, from 53 degrees to 73 degrees**

Combo keys

For mac OS: Long press forward or backward button for 3 seconds can change to full screen page turning (Forward and backward) function

Light modes: Press left, scroll wheel, right buttons at the same time for 3-5 seconds to change light modes (Static, Single-color Breathing, Neon, Seven-color Breathing and Off.)

Mouse Usage

Connect the mouse with your computer by USB port, it can work normally after detecting finished. If needed, you can set the button functions as following.

Driver Setting

1. Installation

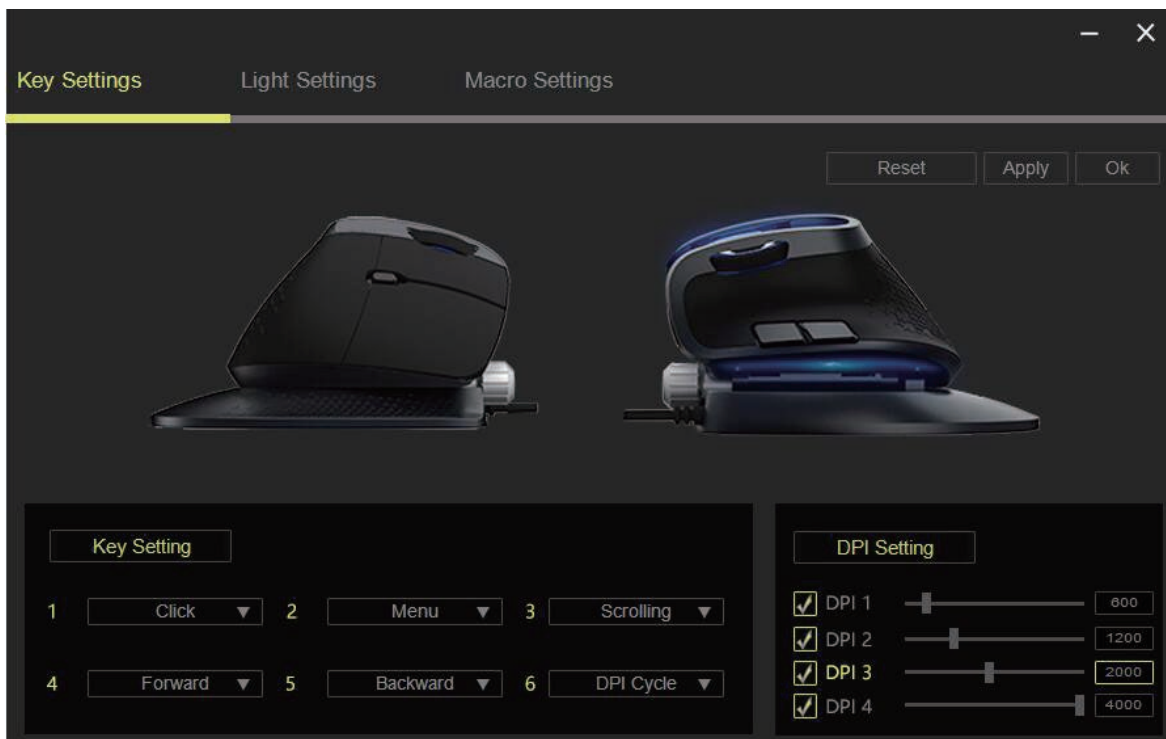
Download the driver from www.deluxworld.com or the CD in the package, install the driver.

Note: Please make sure this mouse is already connected to computer when setting the functions in the driver.

2. Settings

Please remember to click "Apply" to activate your settings, and you can click "Reset" to restore factory default settings.

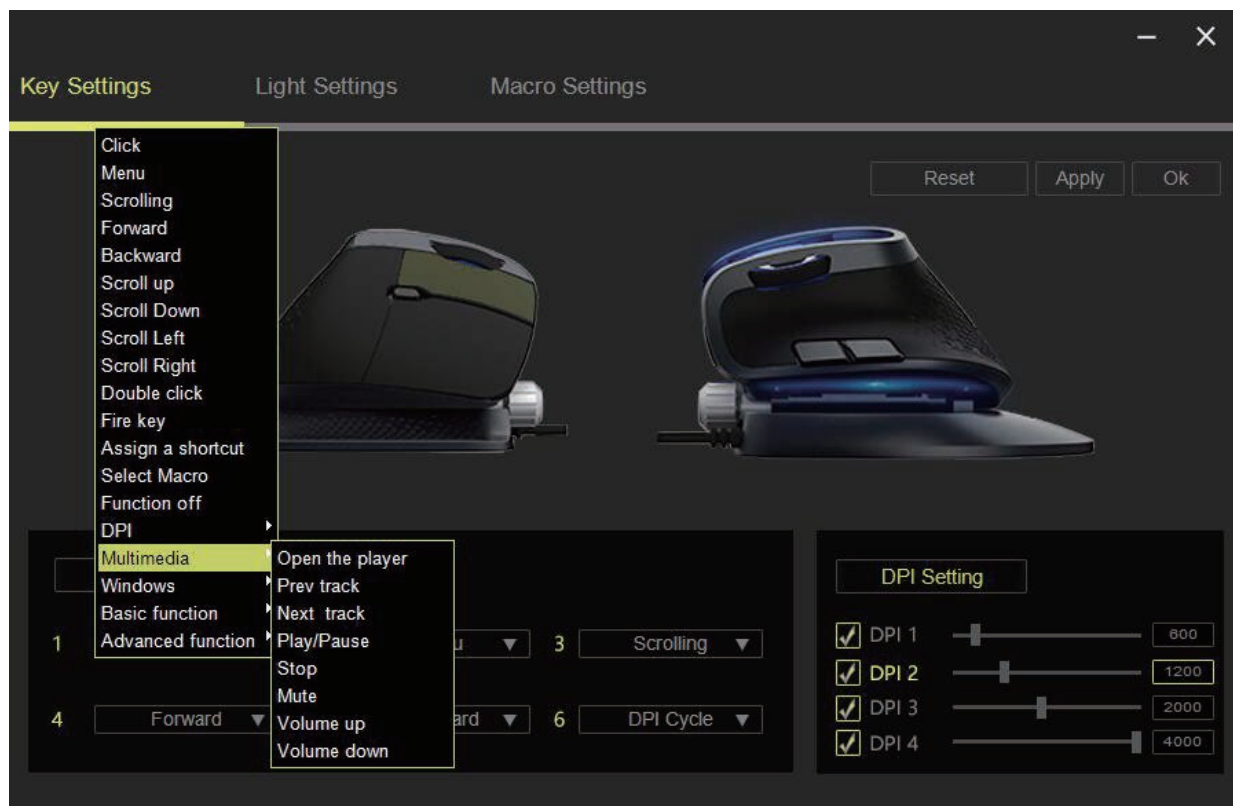
Key settings



These functions can be customized as below: Click, Menu, Scrolling, Forward, Backward, Scroll up, Scroll down, Scroll left, Scroll right, Double click, Fire key, Assign a shortcuts, Select macro, Function off, DPI, Multimedia, Windows, Basic function, Advanced function.

WIRED
VERTICAL
MOUSE



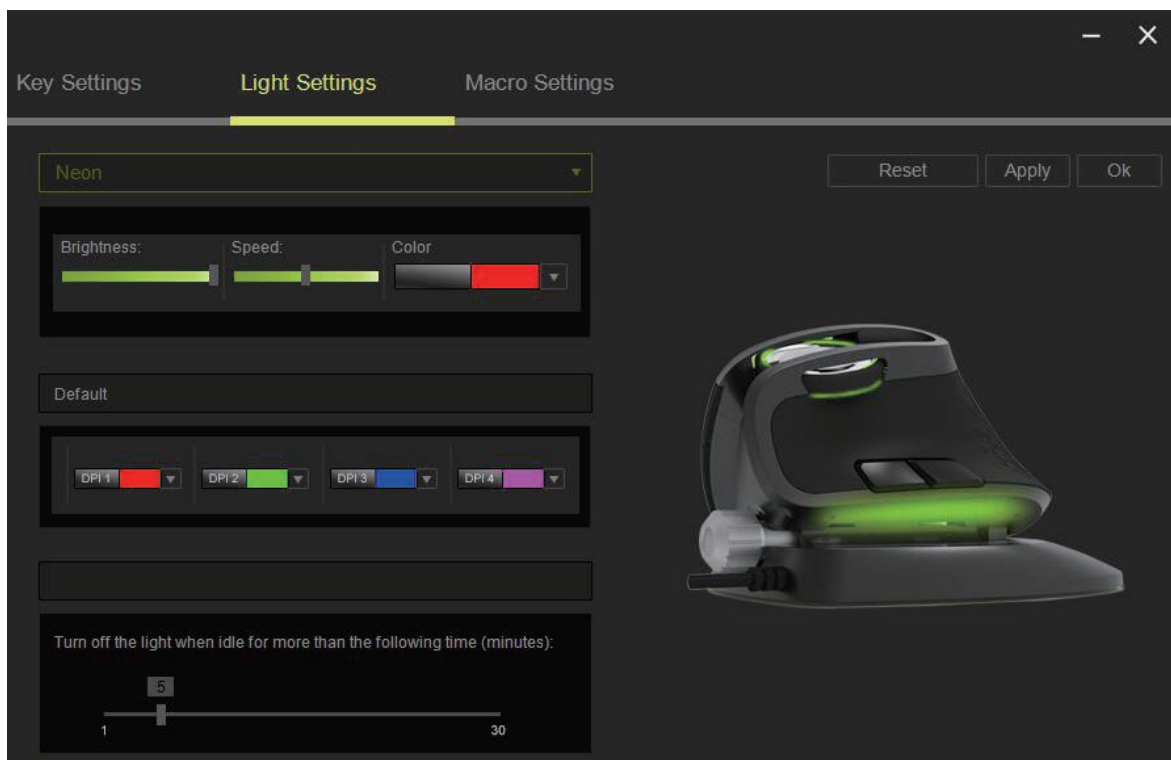


There are multiple choices under DPI, Multimedia, Windows, Basic function, Advanced function menu.

DPI settings

Default DPI:600/1200/2000/4000. DPI gears can be adjusted by checking or unchecking the square box. DPI value can be set by pulling the DPI axis from 200 to 4000.

Light settings



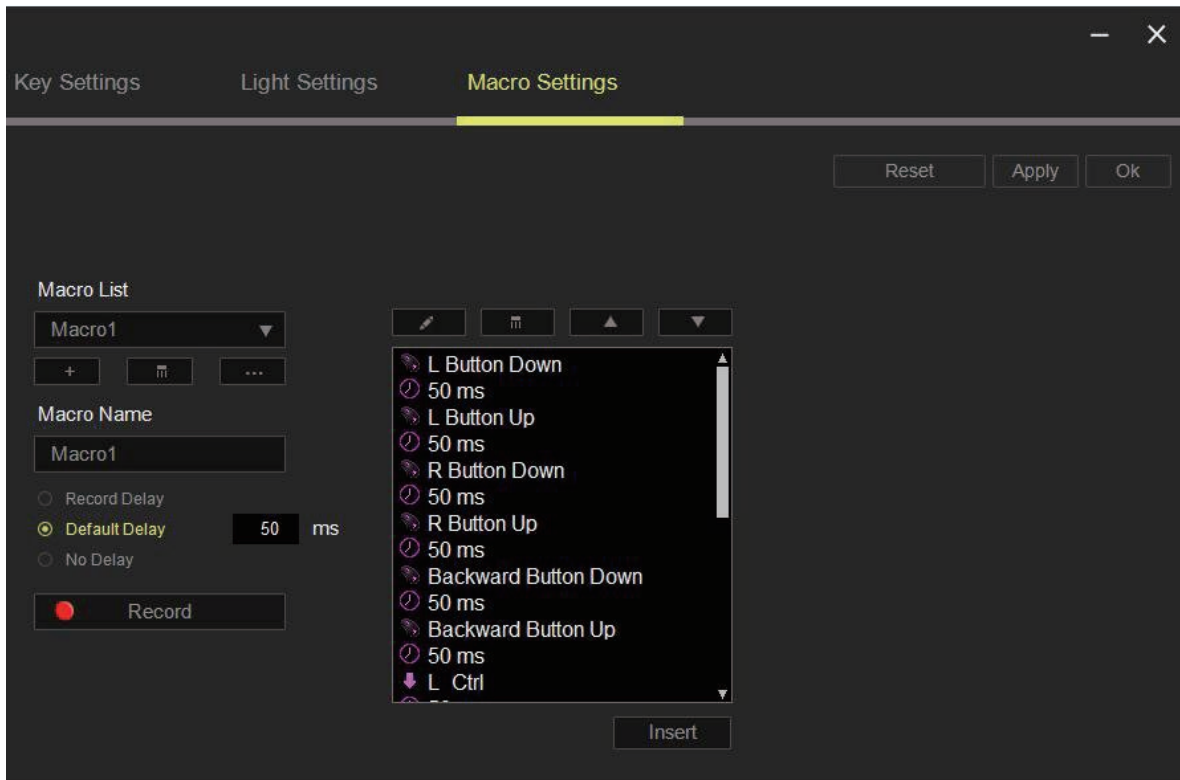
Lighting effect can be customized as below: Static, Single-color Breathing, Neon, Seven-color Breathing and Off.

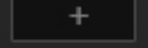
Brightness, speed and color can be customized, you can change the color by adjusting the RGB value or drag the cursor on the color column.

Each DPI gear has a color, and you can customize color for each gear.

Light can be turned off automatically when it's lying idle, standby time can be set from 1 to 30 minutes.

Macro Settings



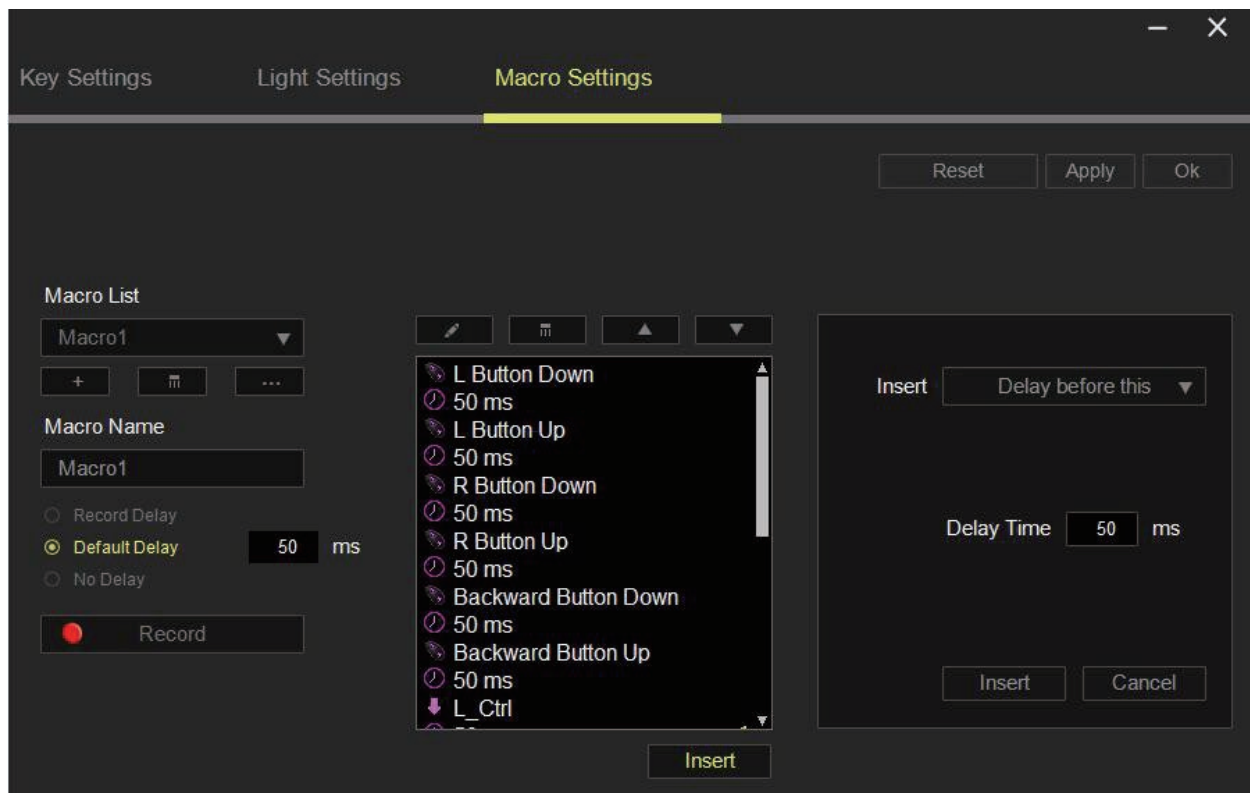
Click  and type the name under “Macro Name” to create a macro command, click “Record” button and all your keystrokes and button presses will automatically register on the macro screen. When you finish recording your macro commands, click “STOP” button to finish.

The Macro session allows you to input the delay in-between commands.

In “Record delay” the delay in-between commands are registered as how it is entered.

The “Record delay” uses a predefined time (expressed in seconds) as the delay.

And “No delay” omits all the pauses in-between keystrokes and button presses.



The “Insert” button allows you to put in additional keystrokes, button presses or time delays either before or after the selected command. A new display window will appear beside the list of macro commands. You may add in a new set of macro commands by clicking the button on the keystroke menu, or input time delays on the duration time field using the delay menu.