

INSIGNIA™

## QUICK SETUP GUIDE

# Memory Card Reader

NS-CRDAC1-B

## PACKAGE CONTENTS

- Memory card reader
- USB-C cable
- USB-C to USB adapter
- *Quick Setup Guide*

Before using your new product, please read these instructions to prevent any damage.

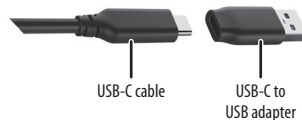
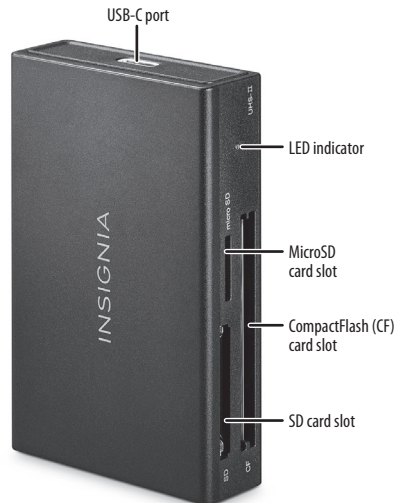
## FEATURES

- Compatible with SD, micro-SD, SDHC, micro-SDHC, SDXC, micro-SDXC, and CF Type I memory cards
- Multi-LUN functionality lets you read and write from multiple cards at the same time
- 5 Gbps max data speed quickly transfers files from USB
- High speed support for SD/microSD UHS-I and UHS-II increases efficiency
- USB to USB-C adapter grants increased compatibility
- 3.28 ft. (1 m) USB-C cable provides flexible placement options
- Blue indicator light shows when the reader is powered

## SYSTEM REQUIREMENTS

- Windows® 10 and 11 (32 bit or 64 bit)
- Mac OS X 10.4 to macOS 10.15
- Android 6 to 13
- SD, micro-SD, SDHC, micro-SDHC, SDXC, micro-SDXC, or CompactFlash Type I memory card
- iPadOS 13.3 to 16
- ChromeOS 78 to 109

## OVERVIEW

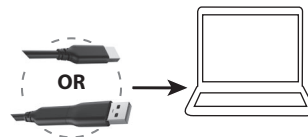


## CONNECTING YOUR CARD READER

Plug the USB-C cable (included) into the USB-C port on your card reader and a USB-C port on your computer. The LED indicator lights blue.

### Notes:

- Use the included adapter to connect to a USB port on your computer.
- Your card reader supports inserting both microSD, SD, and CompactFlash Type I cards at the same time.



## USING YOUR CARD READER

### CAUTION:

- Do not force a memory card into the card reader.
- Insert a card, label side up, into the appropriate slot. Failure to do so may result in damage to your card or card reader.
- Do not remove memory cards while the blue data LED on your reader is flashing. Doing so may lead to loss of data or damage to your memory card.
- Formatting a memory card deletes all of its files. Copy any files you want to keep to a computer before formatting a memory card.

### To access a memory card using Windows:

- 1 Insert a card, label side up, into the appropriate slot. The LED indicator lights blue.

- 2 Open the File Explorer, then click **This PC** in the left-hand menu.

**Note:** If you don't see "This PC," right-click an empty space in the left-hand menu and select "Show This PC" or enable it in the File Explorer's Options menu.

- 3 Double-click your card to see its contents.
- 4 Use normal Windows procedures to open, copy, paste, and delete files. The blue LED indicator blinks when data is being read or written.
- 5 Right-click the name of your card and select **Eject** when you are finished. Do not remove your card from your card reader until the name of your card disappears from the window.

#### **To access a memory card using a Mac computer:**

- 1 Insert a card, label side up, into the appropriate slot. The LED indicator lights blue.
- 2 Open the Finder window, then click your card's name in the left menu to view its contents.
- 3 Use normal Mac procedures to open, copy, paste, and delete files. The blue LED indicator blinks when data is being read or written.
- 4 Right-click the name of your card and select **Eject** when you are finished. Do not remove your card from your card reader until the name of your card disappears from the Finder window.

## **TROUBLESHOOTING**

### **My memory card does not appear on my computer, or an error occurs.**

- Make sure that the memory card is fully inserted into the slot. Insert only one card at a time.
- Make sure that your card reader is connected to your computer.
- Unplug and reconnect your card reader.
- Try a different memory card of the same type.
- Make sure that the card has enough storage capacity to save your data.
- Make sure that the amount of data you attempted to store has not exceeded the capacity of the card.
- Some cards have a read/write security switch. Make sure that the security switch is set to Write Enabled.
- Make sure that only one card reader is connected to your computer. If other card readers are connected, unplug them before connecting this card reader.
- Inspect the ends of the memory cards for dirt or material closing a hole. Clean the contacts with a lint-free cloth and small amounts of isopropyl alcohol.
- You may need to format your memory card. Formatting a memory card will remove all files on it. Do not try this if those files are important.
- Disconnect the cable from your card reader and shine a flashlight into the empty card slots. Look to see if any pin inside is bent, then straighten bent pins with the tip of a mechanical pencil. Replace your memory card reader if a pin has bent so much that it touches another pin.

## **SPECIFICATIONS**

- **Transmission Port:** USB 3.2 Gen1 Type-C USB 2.0 backwards compatible
- **USB Transmission Rate:** 5.0 Gbps (max)
- **Card Transmission Rate:** 312 Mbps (max)
- **Work Temperature:** 32° ~ 104° F (0° ~ 40° C)
- **Dimensions (H × W × D):** 3.07 × 1.92 × 0.66 in. (78.1 × 49 × 17mm) (without cable and adapter)

## **LEGAL NOTICES**

### **FCC Information**

This device complies with part 15 of the FCC Rules. Operation is subject to the following two conditions: (1) This device may not cause harmful interference, and (2) this device must accept any interference received, including interference that may cause undesired operation.

### **ICES-003 statement**

CAN ICES-003 (B)/NMB-003(B)

Changes or modifications not expressly approved by the party responsible for compliance could void the user's authority to operate the equipment.

**NOTE:** This equipment has been tested and found to comply with the limits for a Class B digital device, pursuant to Part 15 of the FCC Rules. These limits are designed to provide reasonable protection against harmful interference in a residential installation. This equipment generates, uses and can radiate radio frequency energy and, if not installed and used in accordance with the instructions, may cause harmful interference to radio communications. However, there is no guarantee that interference will not occur in a particular installation. If this equipment does cause harmful interference to radio or television reception, which can be determined by turning the equipment off and on, the user is encouraged to try to correct the interference by one or more of the following measures:

- Reorient or relocate the receiving antenna.
- Increase the separation between the equipment and receiver.
- Connect the equipment into an outlet on a circuit different from that to which the receiver is connected.
- Consult the dealer or an experienced radio/TV technician for help.

## **ONE-YEAR LIMITED WARRANTY**

Visit [www.insigniaproducts.com](http://www.insigniaproducts.com) for details.

## **CONTACT INSIGNIA:**

For customer service, call  
1-877-467-4289 (U.S. and Canada)  
[www.insigniaproducts.com](http://www.insigniaproducts.com)

INSIGNIA is a trademark of Best Buy and its affiliated companies.  
Distributed by Best Buy Purchasing, LLC  
7601 Penn Ave South, Richfield, MN 55423 U.S.A.  
©2024 Best Buy. All rights reserved.