



Philips
LCD display

E Line

32 (viewable 31.5" / 80 cm)
Full HD (1920 x 1080)

323E7QDAB



Expand your experience

Expand your viewing experience with this big Philips display. With this expansive 32" class full HD display you can truly immerse yourself into the game, or even give yourself needed space to spread out your work.

Superb Picture Quality

- IPS LED wide view technology for image and color accuracy
- Expansive 31.5-inch brilliant display
- 16:9 Full HD display for crisp detailed images
- Less eye fatigue with Flicker-free technology
- SmartContrast for deep black level details
- SmartImage Lite for easy optimized image settings

Elegant Design

- EasySelect menu toggle key for quick on-screen menu access
- Elegant, slim design complements your home decor
- Superb glossy finish enhance your home decoration

Experience immersive multimedia

- HDMI-ready for Full HD entertainment
- Built-in stereo speakers for multimedia

PHILIPS

LCD display
E Line 32 (viewable 31.5" / 80 cm), Full HD (1920 x 1080)

Highlights

IPS technology



IPS displays use an advanced technology which gives you extra wide viewing angles of 178/178 degree, making it possible to view the display from almost any angle. Unlike standard TN panels, IPS displays gives you remarkably crisp images with vivid colors, making it ideal not only for Photos, movies and web browsing, but also for professional applications which demand color accuracy and consistent brightness at all times.

16:9 Full HD display



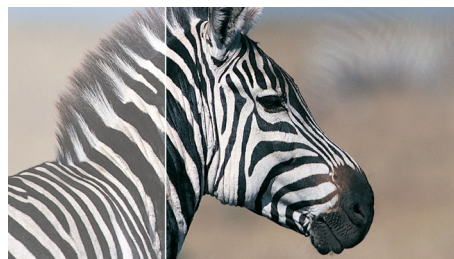
Picture quality matters. Regular displays deliver quality, but you expect more. This display features enhanced Full HD 1920 x 1080 resolution. With Full HD for crisp detail paired with high brightness, incredible contrast and realistic colors expect a true to life picture.

Flicker-free technology



Due to the way brightness is controlled on LED-backlit screens, some users experience flicker on their screen which causes eye fatigue. Philips Flicker-free Technology applies a new solution to regulate brightness and reduce flicker for more comfortable viewing.

SmartContrast



SmartContrast is a Philips technology that analyzes the contents you are displaying, automatically adjusting colors and controlling backlight intensity to dynamically enhance contrast for the best digital images and videos or when playing games where dark hues are displayed. When Economy mode is selected, contrast is adjusted and backlighting fine-tuned for just-right display of everyday office applications and lower power consumption.

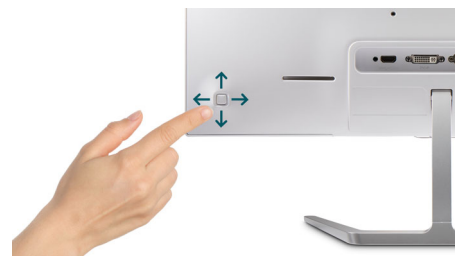
SmartImage Lite

SmartImage Lite is an exclusive, leading edge Philips technology that analyzes the content displayed on your screen. Based on a scenario you select, SmartImage Lite dynamically enhances the contrast, color saturation and

323E7QDAB/27

sharpness of images and videos for ultimate display performance - all in real time with the press on a single button.

EasySelect Menu Toggle Key



The discreetly placed EasySelect Menu Toggle Key allows you to make quick and easy adjustments to monitor settings in the On-Screen Display menu.

HDMI Ready



HDMI-ready

An HDMI-ready device has all the required hardware to accept High-Definition Multimedia Interface (HDMI) input. A HDMI cable enables high-quality digital video and audio all transmitted over a single cable from a PC or any number of AV sources (including set-top boxes, DVD players, A/V receivers and video cameras).

Built-in stereo speakers

A pair of high quality stereo speakers built into a display device. It can be visible front firing, or invisible down firing, top firing, rear firing, etc depending on model and design.



Specifications

Picture/Display

- LCD panel type: IPS technology
- Backlight type: W-LED system
- Panel Size: 31.5 inch / 80 cm
- Effective viewing area: 698.4 (H) x 392.85 (V)
- Aspect ratio: 16:9
- Optimum resolution: 1920 x 1080 @ 60 Hz
- Response time (typical): 5 ms (Gray to Gray)*
- Brightness: 250 cd/m²
- Contrast ratio (typical): 1000:1
- SmartContrast: 20,000,000:1
- Pixel pitch: 0.364 x 0.364 mm
- Viewing angle: 178° (H) / 178° (V), @ C/R > 10
- Flicker-free
- Picture enhancement: SmartImage Lite
- Display colors: 16.7 M
- Scanning Frequency: 30 - 83 kHz (H) / 56 -76 Hz (V)
- sRGB

Connectivity

- Signal Input: VGA (Analog), DVI-D (digital, HDCP), HDMI (digital, HDCP)
- Sync Input: Separate Sync, Sync on Green
- Audio (In/Out): PC audio-in, Headphone jack

Convenience

- Built-in Speakers: 5 W x 2
- User convenience: Power On/Off, Menu/OK, Volume/Down, Input/Up, SmartImage lite
- OSD Languages: Brazil Portuguese, Czech, Dutch, English, Finnish, French, German, Greek, Hungarian, Italian, Japanese, Korean, Polish, Portuguese, Russian, Simplified Chinese, Spanish, Swedish, Traditional Chinese, Turkish, Ukrainian
- Other convenience: Kensington lock, VESA mount (100x100mm)
- Plug & Play Compatibility: DDC/CI, Mac OS X, sRGB, Windows 10 / 8.1 / 8 / 7

Stand

- Tilt: -5/10 degree

Power

- On mode: 45.7 W (typ.), 66.6 W (max.)

- Standby mode: 0.5 W (typ.)
- Off mode: 0.3 W (typ.)
- Power LED indicator: Operation - White, Standby mode- White (blinking)
- Power supply: 100-240VAC, 50-60Hz, Internal

Dimensions

- Product with stand (mm): 730 x 522 x 216 mm
- Product with stand in inch: 28.7 x 20.6 x 8.5 inch
- Product without stand (mm): 730 x 431 x 64 mm
- Product without stand in inch: 28.7 x 17.0 x 2.5 inch
- Packaging in mm (WxHxD): 790 x 625 x 139 mm
- Packaging in inch (WxHxD): 31.1 x 24.6 x 5.5 inch

Weight

- Product with stand (kg): 6.91 kg
- Product with stand (lb): 15.20 lb
- Product without stand (kg): 5.89 kg
- Product without stand (lb): 12.96 lb
- Product with packaging (kg): 8.85 kg
- Product with packaging (lb): 19.47 lb

Operating conditions

- Temperature range (operation): 0 to 40 °C
- Temperature range (storage): -20 to 60 °C
- Relative humidity: 20%-80 %
- Altitude: Operation: +12,000ft (3,658m), Non-operation: +40,000ft (12,192m)
- MTBF: 50,000 hrs (excluding backlight) hour(s)

Sustainability

- Environmental and energy: RoHS, Lead-free, Mercury Free
- Recyclable packaging material: 100 %

Compliance and standards

- Regulatory Approvals: CE Mark, FCC Class B, CU, SASO, KUCAS, ETL, TUV/ISO9241-307, WEEE

Cabinet

- Color: Black
- Finish: Glossy



Issue date 2017-07-04

Version: 2.0.2

12 NC: 8670 001 42768
UPC: 6 09585 25053 6

© 2017 Koninklijke Philips N.V.
All Rights reserved.

Specifications are subject to change without notice.
Trademarks are the property of Koninklijke Philips N.V.
or their respective owners.

www.philips.com

* "IPS" word mark / trademark and related patents on technologies belong to their respective owners.
* HDMI cables vary depending on region and models.
* Response time value equal to SmartResponse