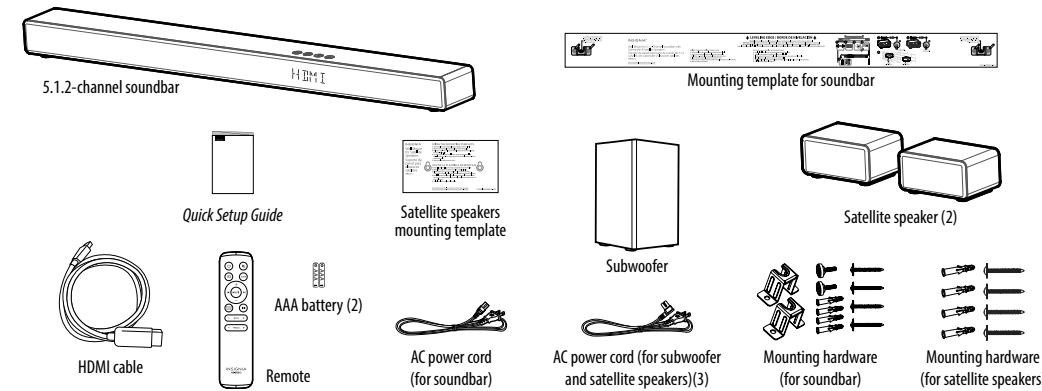


QUICK SETUP GUIDE

5.1.2-Channel Soundbar with Subwoofer and Satellite Speakers

NS-SB512

PACKAGE CONTENTS



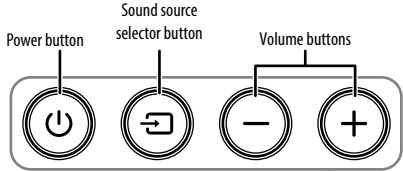
FEATURES

- 5.1.2 surround sound with Dolby Atmos** - Your soundbar system makes high-action scenes feel like they're happening all around you. It intelligently spreads sound in all directions to bring cinematic sound into your home
- Easy setup** - Simply run power to your satellite speakers and subwoofer, and let wireless Bluetooth connections take care of the rest

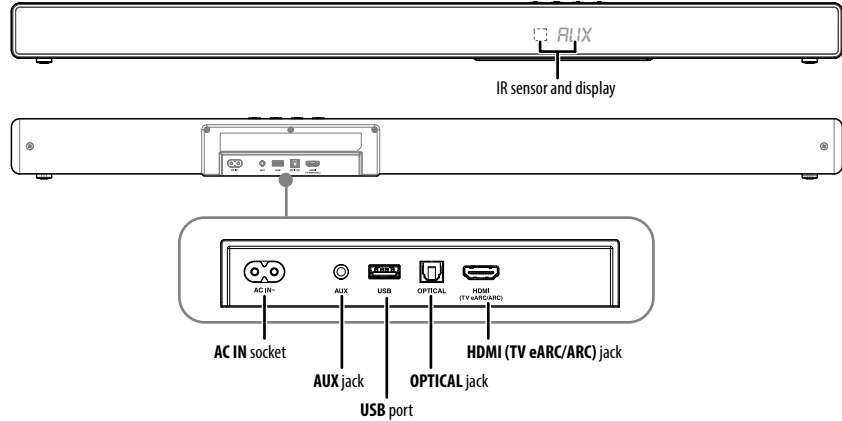
Before using your new product, please read these instructions to prevent any damage.

SOUNDBAR

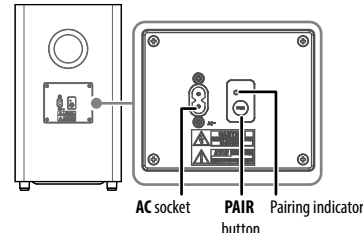
Top



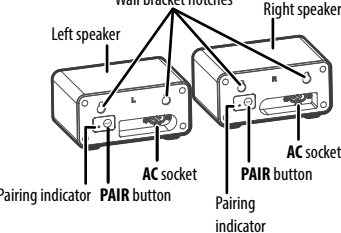
Back



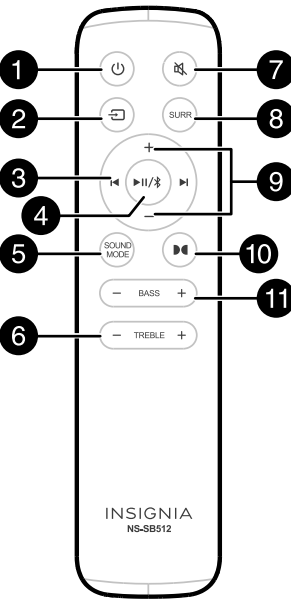
SUBWOOFER



SATELLITE SPEAKERS



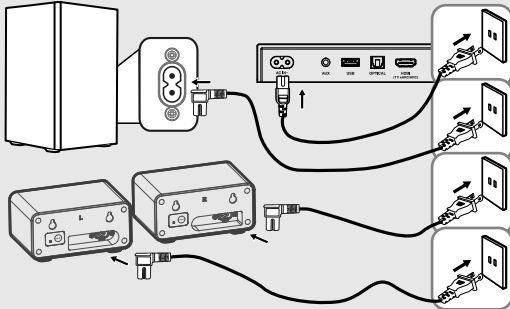
REMOTE



#	ITEM	DESCRIPTION
1	Power button	Press to turn your soundbar on or off.
2	Sound source selector button	Press repeatedly to cycle through the available sound sources.
3	Previous/next buttons	In Bluetooth or USB mode, press to skip to the previous or next track.
4	Play/pause/Bluetooth button	In Bluetooth or USB mode, press to play or pause playback. • Short press to switch play/pause. • Press and hold three seconds to switch Bluetooth source. • Press and hold for six seconds to initiate to Bluetooth pairing.
5	SOUND MODE button	Press to select the sound mode. • MUSIC - General music or TV show listening. • MOVIE - Optimize movie sound for a theater setting. • NEWS - Optimize spoken voice or dialog for TV news and more. • NIGHT - Optimize sound for quiet settings.
6	TREBLE +/- button	Press to adjust the treble level of your soundbar.
7	Mute button	Press to mute the sound from your soundbar. Press again to restore the sound.
8	SURR (surround sound) button	Short-press to display the current surround level, then use the +/- (volume) buttons to adjust the level.
9	+/- (volume) buttons	Press to increase or decrease your soundbar's volume.
10	Dolby Atmos button	Short-press to display the current Dolby effect level (LOW/MED/HIGH), then use the +/- (volume) buttons to adjust the level. Adjustment only works with Dolby format audio. Non-Dolby format audio displays NA when pressed. • On: The display shows AUTOWAKE ON. • Off: The display shows AUTOWAKE OFF.
11	BASS +/- button	Press to adjust the bass volume level of your soundbar.

CONNECTING THE AC POWER CORDS

- IMPORTANT:** Before you connect your soundbar to an audio source, you need to connect it to the provided power cable.
- CAUTION:** Make sure that the electrical outlet matches the input requirements of 100-240V AC at 50/60Hz before connecting.
- Connect an AC power cord (included) from your soundbar's **AC IN** socket to a power outlet or surge protector.
 - Connect an AC power cord (included) from your subwoofer's **AC** socket to a power outlet or surge protector.
 - Connect an AC power cord (included) from your satellite speakers' **AC** socket to a power outlet or surge protector.



CONNECTING YOUR SOUNDBAR

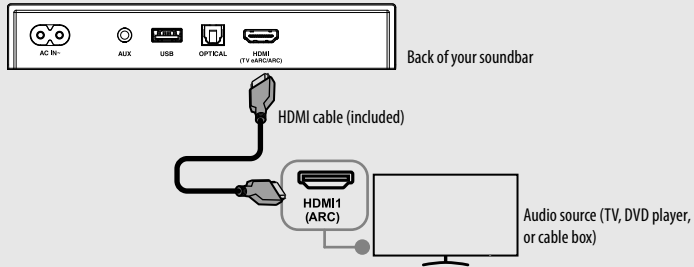
Look at the back of your sound source device, such as a TV, DVD/Blu-ray player, or cable box, to identify your audio OUTPUT jacks or check the documentation that came with your sound source device to determine if it has Bluetooth capability.

Choose one of the connection options that fits your sound source. You can connect several devices and switch the sound source as required.

Before connecting your source device, connect your soundbar, subwoofer, and satellite speakers to power. See "CONNECTING THE AC POWER CORDS".

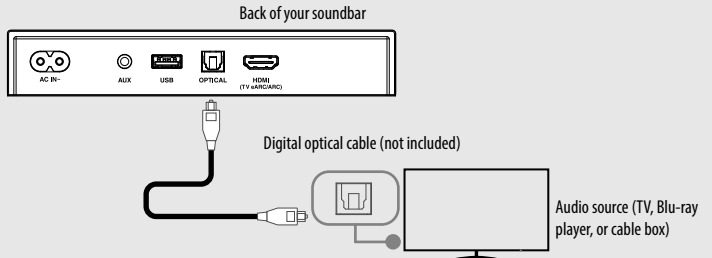
Connecting to HDMI eARC/ARC (Best)

- Note:** You can use HDMI to connect to other HDMI devices. To use the HDMI eARC/ARC functionality, the connected device must also have HDMI ARC functionality.
- HDMI eARC/ARC allows a high definition TV to directly transmit audio to the AV amplifier/receiver through an HDMI cable, without the need for an additional audio cable.
- Remove the caps off both ends of the HDMI cable (included).
 - Connect one end of the HDMI cable to the **HDMI (TV eARC/ARC)** jack on your soundbar.
 - Connect the other end into the HDMI eARC/ARC Output jack on your source device and turn on the CEC on your source device.
 - Change the source device's audio output to the PCM/DTS/Dolby format (typically found in audio settings).
 - Press the **Sound source selector** button on your soundbar or your soundbar remote repeatedly until the display on the front of your soundbar shows **HDMI**.



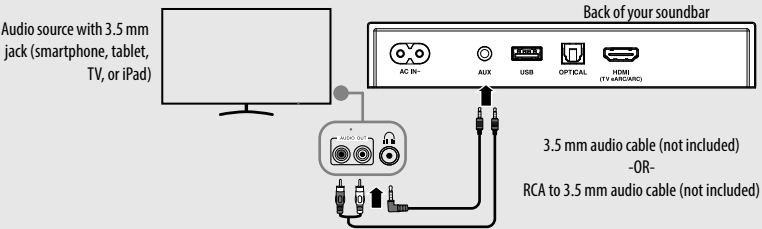
Connecting to digital optical (Better)

- Connect one end of a digital optical cable (not included) to the **OPTICAL** jack on your soundbar.
- Connect the other end into the Digital Optical Output jack on your source device.
- Change the source device's audio output to the PCM/DTS/Dolby format (typically found in audio settings). See the documentation that came with your audio source device for more information.
- Press the **Sound source selector** button on your soundbar or soundbar remote repeatedly to select Optical mode.



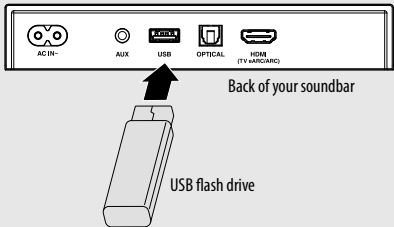
Connecting to AUX (Good)

- Connect one end of a 3.5 mm audio cable (not included) into the **AUX** jack on your soundbar, then connect the other end of the AUX cable to the headphone or AUX Output jack on your audio source device.
- Press the **Sound source selector** button on your soundbar or soundbar remote repeatedly to select AUX mode.



Connecting to USB

- Plug a USB flash drive (with MP3/WAV/FLAC) into the **USB** port on the back of your soundbar.
- Press the **Sound source selector** button on your soundbar or soundbar remote repeatedly to select USB mode.
- Control USB playback by pressing the **Play/pause/Bluetooth** button or the **Previous/next** buttons on your soundbar remote.



CONNECTING YOUR SOUNDBAR USING BLUETOOTH

Pairing your devices

- 1 Turn on your soundbar.
- 2 Place your Bluetooth device within 26.25 ft. (8 m) of your soundbar.
- 3 Press the (sound source selector) button on your soundbar repeatedly until the display on the front of your soundbar flashes **BT** or press the (play/pause/Bluetooth) button for three seconds on your remote.
- 4 Navigate to your device's Bluetooth settings, turn on Bluetooth, then search for available devices. See the documentation that came with your audio source device for more information on pairing.
- 5 On your Bluetooth device, select **Insignia NS-SB512** from the device list.
- 6 Repeat steps 1-5 if **Insignia NS-SB512** is not displayed.
- 7 When pairing is completed the display on the front of your soundbar shows **BT**.

Tips:

- The operational range between your soundbar and the device is approximately 26.25 ft. (8m).
- Compatibility with all Bluetooth devices is not guaranteed.
- Any obstacle between the device and your soundbar can reduce operational range.
- Keep your soundbar away from other electronic devices that may cause interference.
- Your soundbar will also be disconnected when your device is moved beyond the operational range.

Disconnecting your devices

- Turn off the Bluetooth function on your device.
- Press and hold the (play/pause/Bluetooth) button your soundbar remote for three seconds.
- Switch to another source on your soundbar.

CONNECTING YOUR SUBWOOFER AND SATELLITE SPEAKERS

Automatic pairing

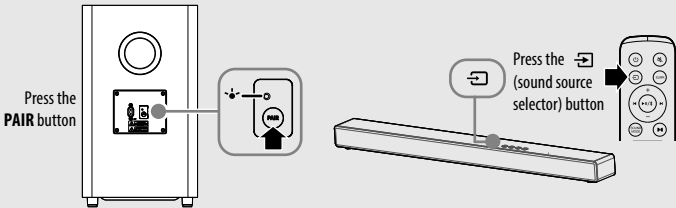
Your subwoofer, satellite speakers, and your soundbar will automatically pair when they are plugged in. No cables are needed to connect them.

- When your subwoofer and satellite speakers are not pairing with your soundbar, the pairing indicator blinks quickly.
- When your subwoofer and satellite speakers are paired with your soundbar, the pairing indicator stays on.

Note: If the automatic pairing fails, pair your subwoofer and satellite speakers with your soundbar manually.

Manual pairing

- 1 Make sure that all the cables are well connected and switch your soundbar on.
- 2 Press and hold the **PAIR** button on the back of your subwoofer or satellite speakers for a few seconds. Your subwoofer or satellite speakers will enter pairing mode and the pairing indicator on your subwoofer or satellite speakers blink quickly.



- 3 Press and hold the (sound source selector) button on your soundbar for 15 seconds. The display shows **RESET** after ten seconds, then shows **PAIRING** after 15 seconds. If your subwoofer and satellite speakers are not connected, the display shows **SUB SURL SURR**. If your subwoofer and satellite speakers are connected, the display shows **CONNECTED** and your soundbar plays a sound.

Note: If the pairing indicator blinks, the wireless connection has failed. Unplug the power cord of your subwoofer or satellite speakers and then reconnect the power cord after four minutes. Repeat steps 1-3.

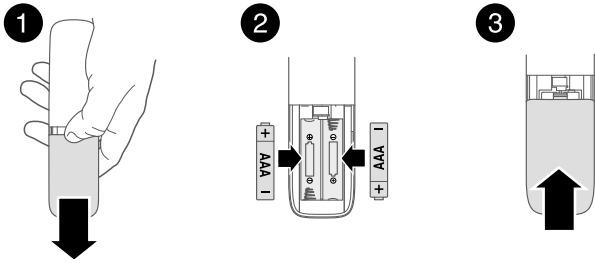
- 4 Repeat steps 1-3 to pair your other accessory (subwoofer or satellite speakers).

Manual pairing tips

- If the pairing fails again, check to determine if there are obstacles or strong interference (for example, interference from an electronic device) around your location. Remove these obstacles or strong interferences and repeat the above procedures.
- Your subwoofer should be within 19.7 ft. (6 m) of your soundbar in an open area.

INSTALLING THE REMOTE BATTERIES

- 1 Remove the battery compartment cover from the back of the remote.
- 2 Insert two AAA batteries (included) into the battery compartment, making sure that the polarities on the batteries matches the + and - symbols inside the battery compartment.
- 3 Replace the battery compartment cover.

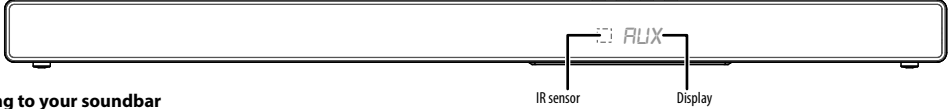


USING YOUR SOUNDBAR

Using the remote

Note: Make sure that batteries are installed in your soundbar remote.

Point your soundbar remote directly at the IR sensor on the front of your soundbar. You must be within approximately 19.7 ft. (6 m) of your soundbar.



Listening to your soundbar

- 1 Press the (power) button to turn on your soundbar. The soundbar display will show different text based on the selected mode (*HDMI* = HDMI, *OPT* = OPTICAL, *AUX* = AUX, *USB* = USB, *BT* = Bluetooth).
- 2 Turn on the audio source device connected to your soundbar and begin playback.
- 3 Press the (sound source selector) button on your soundbar or your soundbar remote repeatedly until you hear sound from your soundbar.

Notes:

- If you use the **HDMI (TV eARC/ARC)** jack, you must change your device's audio output setting to the PCM/DTS/Dolby format. See the documentation that came with the output device for additional information.
- Make sure that your sound source is set to output sound to your soundbar (whichever connection method you choose). See the documentation that came with the device for additional information.
- To turn your soundbar off completely, you must unplug the AC power cord.

- 4 Adjust the volume on your soundbar or the source audio device to a comfortable level.

WARNING: Continuous use of high volume sound may permanently damage your hearing.

- 5 Press the (power) button again to turn off your soundbar. Your soundbar enters standby mode, the display lights up with the white standby LED, and the display shows **SLEEP**.

PROGRAMMING A DIFFERENT REMOTE

Your soundbar can learn 15 button codes from most remotes, so you can easily control the sound with either your soundbar remote or your TV remote. You can also replace your soundbar remote with another remote.

Programming using the Manual Sequence Learning Mode

- 1 With the power turned off, press and hold the (power) button on the top of your soundbar for six seconds to enter the Manual Sequence Learning mode.
- 2 Press the button on the soundbar remote that you want to learn. After selecting, your soundbar will enter the IR learning state for the current function. The display shows **IR MANUAL**.



- 3 Press and hold the remote button that needs to be relearned until the displayed characters change from slow blinking to quick blinking.



- 4 Press and hold the button that needs to be relearned until the displayed characters change from flashing to steady. The display shows **IR MANUAL** (scrolling display).



- 5 Repeat steps 2-4 to bind the other buttons in the preset learning mode to the remote one by one, or short-press the (sound source selector) button on your soundbar to skip the current button function in the learning sequence.

Note: If the button is incorrectly pressed three times, the display shows **ERROR**.

If no operation is performed within 20 seconds, the soundbar automatically exits the IR learning mode.

OR

- 6 Press and hold the (sound source selector) button on your soundbar for two seconds to exit learning mode. The display shows **IR COMPLETE**.

OR

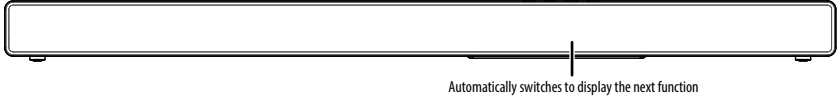
After learning 15 buttons, IR learning will automatically stop and exit. The display shows **IR COMPLETE**.

Programming using the Preset Sequence Learning Mode

- 1 Point your soundbar remote and the remote you want to program within 4 in. (10 cm) of the IR sensor on your soundbar.
- 2 With the power turned off, press and hold the (power) button on the top of your soundbar for three seconds to enter the Preset Sequence Learning mode. The display shows **IR PRESET**. Your soundbar starts to learn the buttons in the following sequence: (power) > (mute) > (sound source selector) > **SURR** (surround sound) > + (volume up) > - (volume down) > (previous) > (next) > (play/pause/Bluetooth) > **SOUND MODE** > (Dolby Atmos) > **BASS** + > **BASS** - > **TREBLE** + > **TREBLE** -.



- 3 Press the button on your soundbar remote that you want to learn. Your soundbar enters the IR learning state for the current function and the displayed characters change from steady to slow blinking.
- 4 Press and hold the remote button that needs to be relearned until the displayed characters change from slow blinking to quick blinking.
- 5 Press and hold the button that needs to be relearned until the displayed characters change from flashing to steady. After two seconds, the display automatically switches to the next function.



- 6 Repeat steps 3-5 to bind the other buttons in the preset learning mode to the remote one by one, or short-press the (sound source selector) button on your soundbar to skip the current button function in the learning sequence.

Note: If the button is incorrectly pressed three times, the display shows **ERROR**.

- 7 If no operation is performed within 20 seconds, your soundbar automatically exits the IR learning mode.

OR

- 8 Press and hold the (sound source selector) button on your soundbar for two seconds to exit learning mode. The display shows **IR COMPLETE**.

OR

After learning 15 buttons, IR learning will automatically stop and exit. The display shows **IR COMPLETE**.

Deleting all learned remote codes

- With the power off, press and hold the (power) button on your soundbar for ten seconds to clear all learned codes. When all learned remote codes are cleared, the display shows **IR RESET** and your soundbar turns off.

POSITIONING YOUR SOUNDBAR

- If your TV is placed on a table, you can place your soundbar on the table directly in front of the TV stand, centered with the TV screen.
- If your TV is attached to a wall, you can mount your soundbar on the wall directly below the TV screen.

Note: If you want to mount your soundbar below a wall-mounted flat screen TV, see your online *User Guide* or follow the instructions on the mounting template (included) using the mounting hardware (included).

POSITIONING YOUR SUBWOOFER

For the best sound results from your subwoofer, it should be placed against a wall or in a corner of the room. The location within the room is less important, because bass tones are omni directional.

POSITIONING YOUR SATELLITE SPEAKERS

If you want to mount your satellite speakers on the wall, see your online *User Guide* or follow the instructions on the mounting template (included) using the mounting hardware (included).

CONFIGURING DOLBY ATMOS

You can choose between:

- **LOW:** Best for smaller rooms with low ceilings.
- **MED** (default): Best for medium-sized rooms.
- **HIGH:** Best for larger rooms with taller ceilings.

Note: Short-press the (Dolby Atmos) button to display the current Dolby effect level (LOW/MED/HIGH), then use the +/- (volume) buttons to adjust the level. Adjustment only works with Dolby format audio. Non-Dolby format audio displays **NA** when pressed.

TROUBLESHOOTING

For Troubleshooting information, see your online *User Guide*.

LEGAL NOTICES

FCC

This device complies with part 15 of the FCC Rules. Operation is subject to the following two conditions: (1) This device may not cause harmful interference, and (2) this device must accept any interference received, including interference that may cause undesired operation.

Note: This equipment has been tested and found to comply with the limits for a Class B digital device, pursuant to part 15 of the FCC Rules. These limits are designed to provide reasonable protection against harmful interference in a residential installation.

This equipment generates, uses, and can radiate radio frequency energy and, if not installed and used in accordance with the instructions, may cause harmful interference to radio communications.

However, there is no guarantee that interference will not occur in a particular installation. If this equipment does cause harmful interference to radio or television reception, which can be determined by turning the equipment off and on, the user is encouraged to try to correct the interference by one or more of the following measures:

- Reorient or relocate the receiving antenna.
- Increase the separation between the equipment and receiver.
- Connect the equipment into an outlet on a circuit different from that to which the receiver is connected.
- It is recommended that a dealer or an experienced radio/TV technician is contacted for help.

Changes or modifications not expressly approved by the party responsible for compliance could void the user's authority to operate the equipment.

This equipment complies with FCC radiation exposure limits set forth for an uncontrolled environment. This equipment should be installed and operated with minimum distance of 20 cm between the radiator and your body. This transmitter must not be co-located or operating in conjunction with any other antenna or transmitter.

Other parties' marks are property of their respective owners.



FOR DTS PATENTS, SEE [HTTP://XPERI.COM/DTS-PATENTS/](http://xperi.com/dts-patents/). MANUFACTURED UNDER LICENSE FROM DTS, INC. AND ITS AFFILIATES. DTS, DTS:X, THE DTS:X LOGO, VIRTUAL:X, AND THE DTS VIRTUAL:X LOGO ARE REGISTERED TRADEMARKS OR TRADEMARKS OF DTS, INC. AND ITS AFFILIATES IN THE UNITED STATES AND/OR OTHER COUNTRIES. © DTS, INC. AND ITS AFFILIATES. ALL RIGHTS RESERVED.



Dolby, Dolby Atmos, and the double-D symbol are registered trademarks of Dolby Laboratories Licensing Corporation. Manufactured under license from Dolby Laboratories. Confidential unpublished works. Copyright © 2012-2024 Dolby Laboratories. All rights reserved.



The terms HDMI, HDMI High-Definition Multimedia Interface, HDMI trade dress and the HDMI Logos are trademarks or registered trademarks of HDMI Licensing Administrator, Inc.

ONE-YEAR LIMITED WARRANTY

Visit www.insigniaproducts.com for details.

CONTACT INSIGNIA

For customer service, call 1-877-467-4289 (U.S. and Canada)
www.insigniaproducts.com

INSIGNIA is a trademark of Best Buy and its affiliated companies. Distributed by Best Buy Purchasing, LLC, 7601 Penn Ave South, Richfield, MN 55423 U.S.A. ©2025 Best Buy. All rights reserved.