

# INSIGNIA™

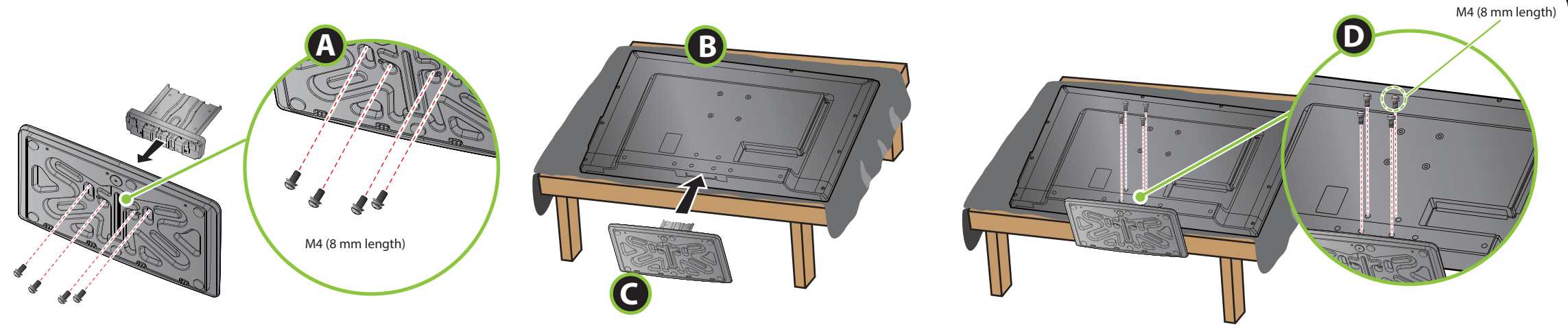
## QUICK SETUP GUIDE

39" LED TV  
NS-39D400NA14

**Thank you**  
for purchasing this state-of-the-art  
Insignia television. We hope you enjoy  
the quality and reliability of this  
television for years to come.



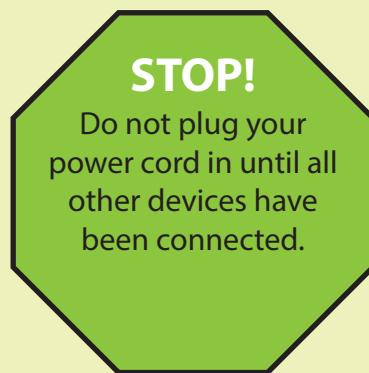
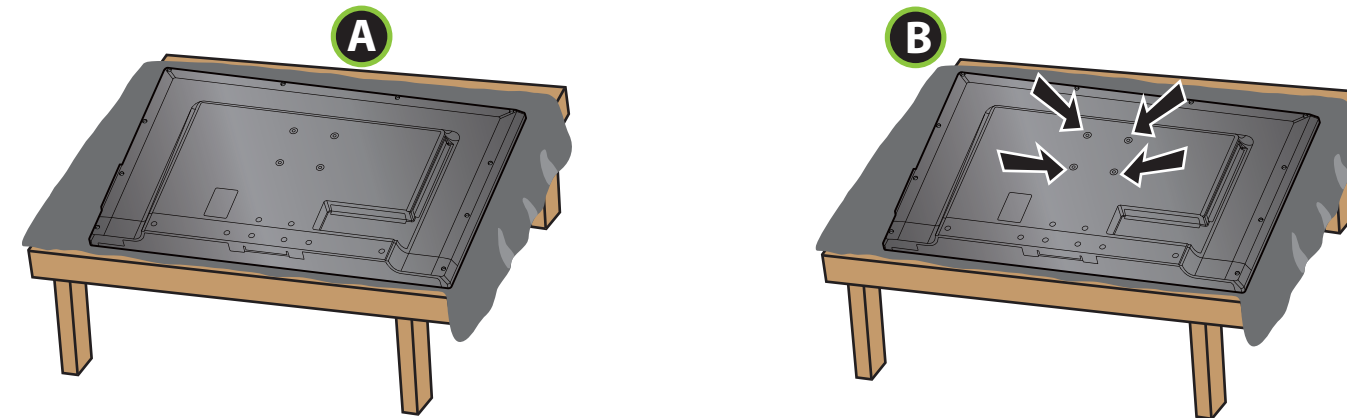
- 1 START HERE**
- How do I attach the stand to my TV?** (not for wall mounting)  
**You'll need:** A Phillips screwdriver and a soft surface to lay the TV on.
- A** Secure the stand column to the TV stand using four provided screws.
  - B** Carefully place your TV face-down on a cushioned, clean surface to protect the screen from damages and scratches.
  - C** Insert the stand column into the TV.
  - D** Secure the stand column to the TV with the four provided screws.



- OR -

### How do I prepare my TV for wall mounting?

- (not for use with a TV stand)
- A** Carefully place your TV face-down on a cushioned, clean surface to protect the screen from damages and scratches.
  - B** Locate the mounting screw holes on the back of your TV and see the instructions that came with your wall mount for more information about how to correctly mount your TV.



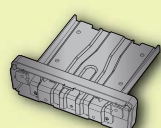
### Included accessories



Power cord



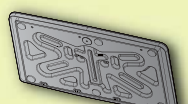
Remote control  
and two AAA batteries



Stand column



M4 (8 mm length) (8)



TV stand

### Which cables do you have?

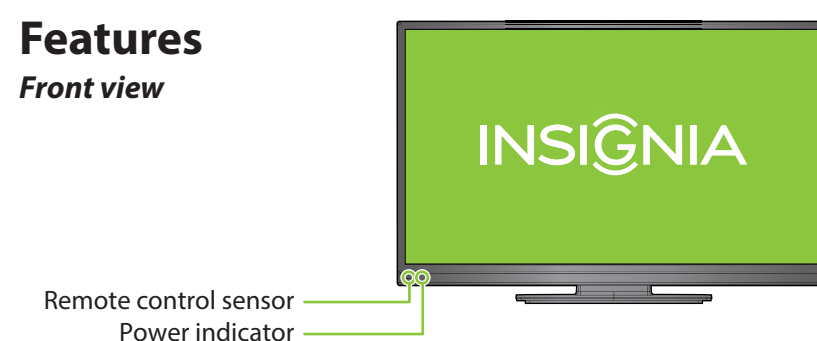
*Your TV has several different jacks for connecting devices. For the best video quality, use the best available connection. Use the cables that came with your devices.*

VIDEO QUALITY	JACK TYPE	CABLE CONNECTOR
<b>BEST</b>	HDMI video/audio	
<b>BETTER</b>	Component video and analog audio	
<b>GOOD</b>	Composite video and analog audio	
<b>GOOD</b>	Coaxial video/audio	

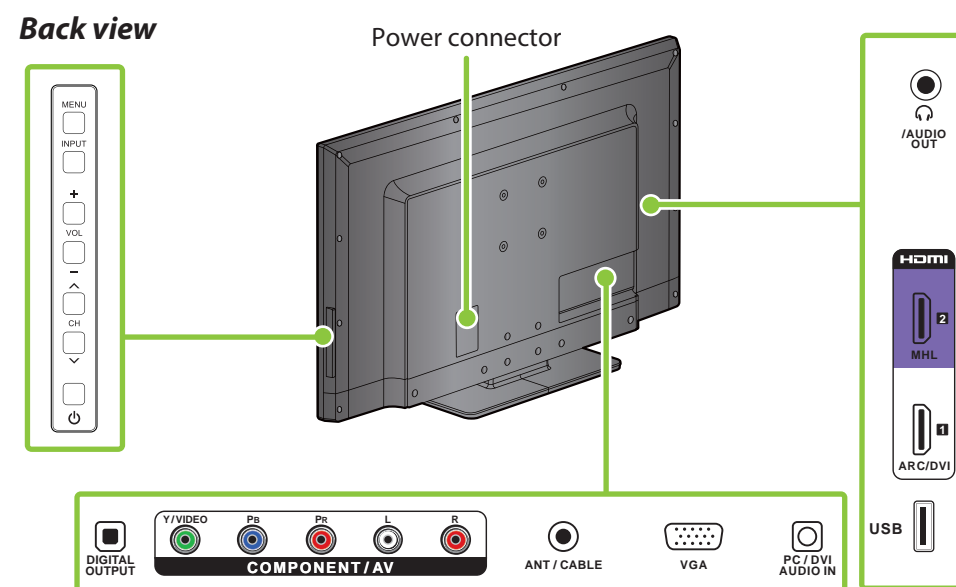
**Note:** You can use the HDMI 1/ARC/DVI jack to connect a DVI device to your TV. Attach an HDMI-to-DVI adapter to the end of the HDMI cable. The adapter connects to the DVI device's jack. See your online *User Guide* for more information about different types of HDMI (ARC, DVI, MHL).

### Features

#### Front view



#### Back view

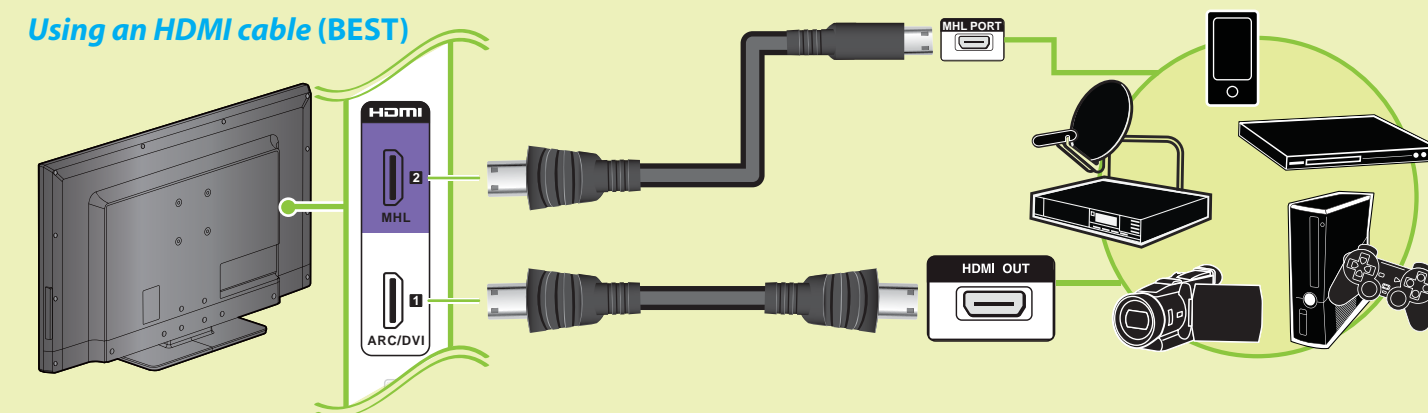


**Note:** Images do not necessarily represent the exact design of your television.

## 2 MAKING CONNECTIONS

**How do I watch TV (cable or satellite receiver) and/or connect a device such as a DVD or Blu-ray Disc player, game station, MHL-enabled device, Roku streaming stick, or camcorder?**

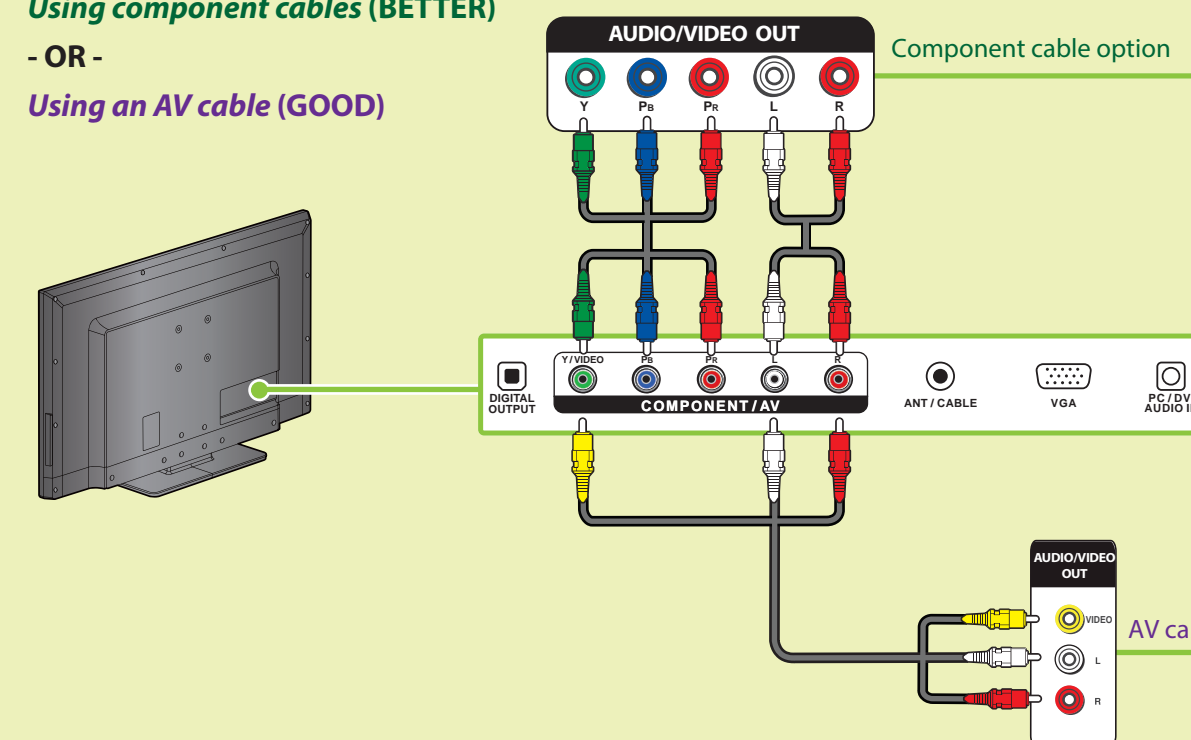
#### Using an HDMI cable (BEST)



**Multi-purpose jacks:** You can plug any device that uses HDMI into the **HDMI 1/ARC/DVI** or **HDMI 2/MHL** jacks. However, certain devices must be connected to the **HDMI 1/ARC/DVI** or **HDMI 2/MHL** jack. See the instructions that came with your MHL, ARC, or DVI device for more information.

#### Using component cables (BETTER)

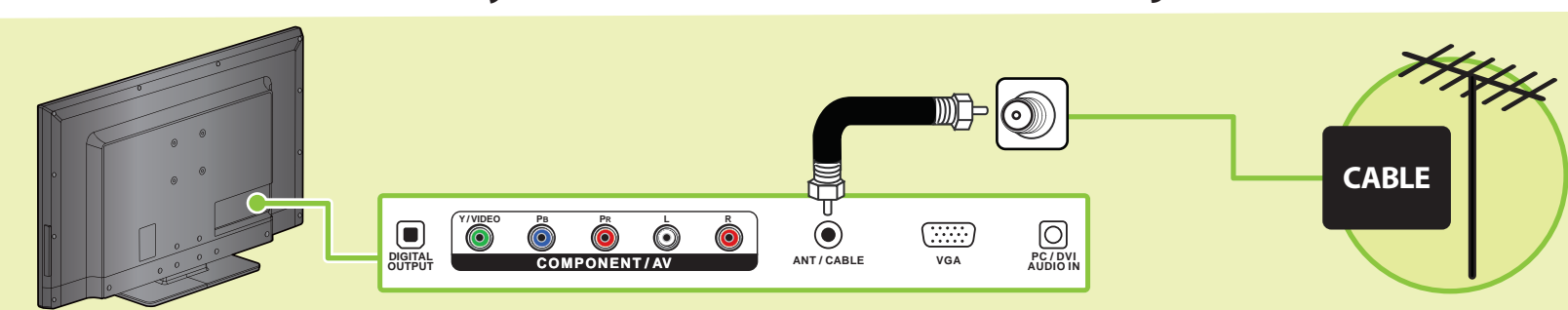
- OR -  
Using an AV cable (GOOD)



**Note:** The component and AV jacks are shared. This means you can connect only one component or AV device at a time. We suggest using HDMI if your device supports it.

**Note:** Connect the yellow video cable connector to the green **Y/VIDEO** jack on the back of your TV.

### How do I connect my TV to an antenna or cable wall jack?



OVER

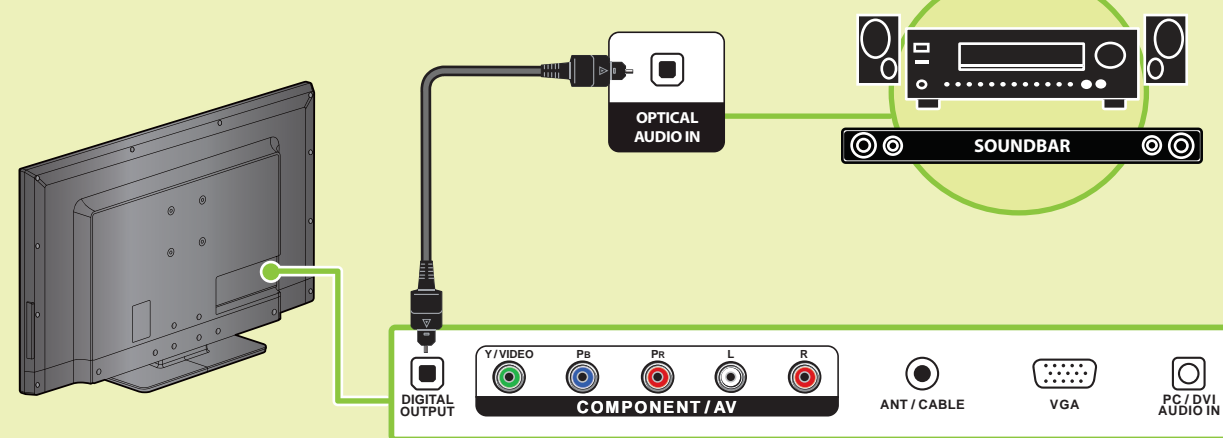
Before using your new product, please read these instructions to prevent any damage.



### 3 CONNECTING AUDIO DEVICES

#### How do I connect my TV to external speakers?

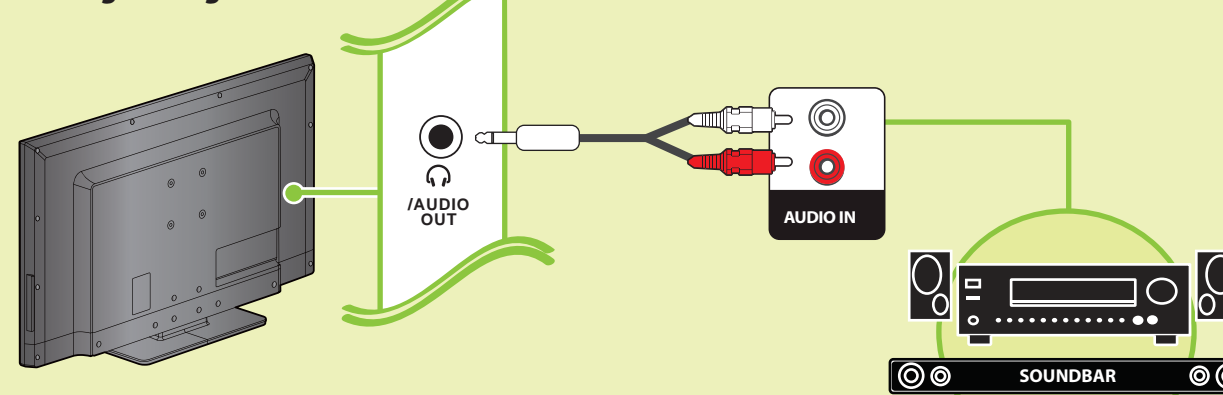
##### Using digital audio



**Note:** Refer to the instructions that came with your speakers for more information.

- OR -

##### Using analog audio



**Note:** Refer to the instructions that came with your speakers for more information.

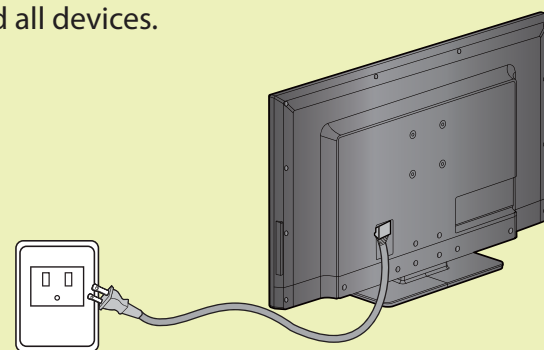
### 4 TURNING ON MY TV

#### When can I turn on my TV?

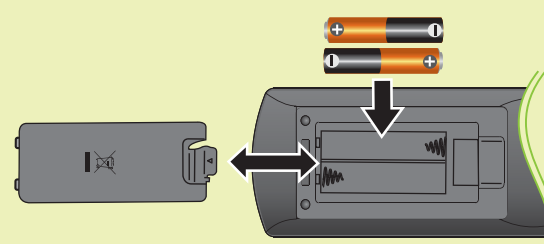
The best time to turn on your TV is after you have attached the TV stand or wall-mounted your TV and connected all devices.

##### When your television is in place:

- 1 Plug the AC power cord into the **AC IN** connector on the back of your TV.
- 2 Plug the other end of the cord into a power outlet.



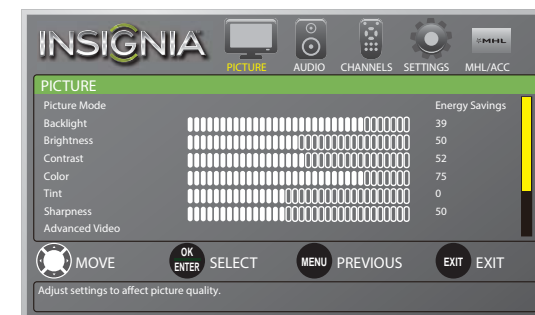
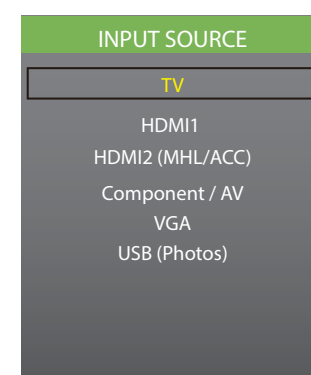
- 3 Install the remote control batteries.



- 4 Press (power) on your remote control.
- 5 Follow the on-screen instructions.



#### Using your remote control



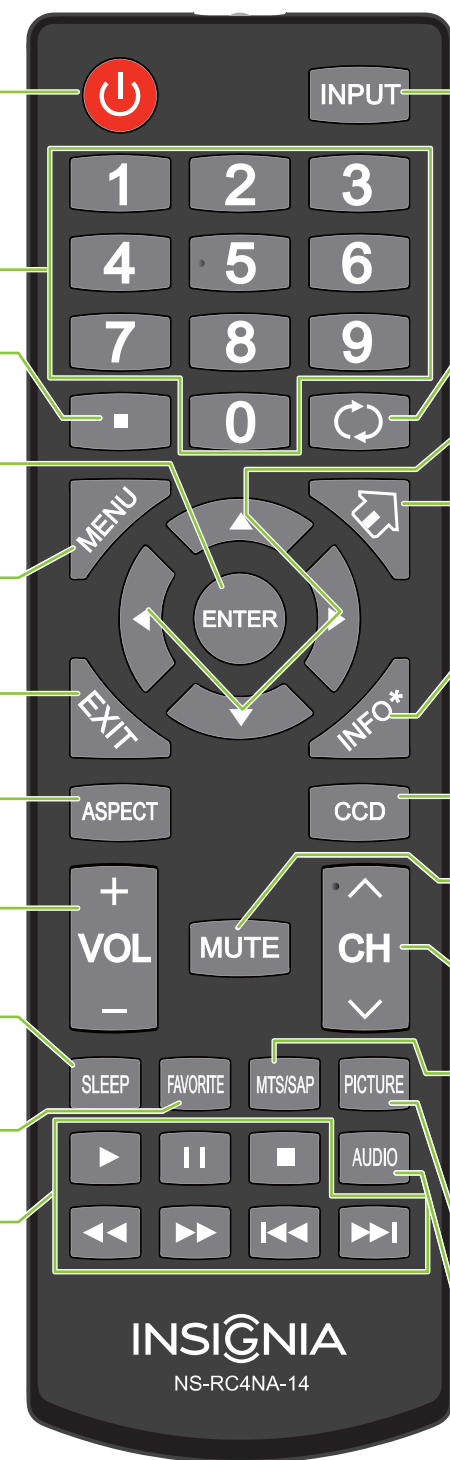
##### What are my screen-size options?

- NORMAL:** Original aspect ratio is preserved. Black bars are present if content is not widescreen (16:9).
- ZOOM:** Expands the image to fill the screen. The top and bottom of the image may be cropped.
- WIDE:** Displays content recorded in a 16:9 (wide-screen) aspect ratio.
- CINEMA:** Stretches the image at the edges, but keeps a clear image in the center.
- AUTO:** Automatically adjusts the image based on the screen size and the TV program. Select this option if you are uncertain which aspect ratio to choose.  
**Note:** Auto is only available when **Auto Aspect Ratio** in the **CHANNELS** menu is set to **On**.

#### I already have a universal remote control. How do I make it control this TV?

If you already have a universal remote control that you would like to program to work with your TV and don't want to use the included Insignia remote control, see the table for common codes.

UNIVERSAL REMOTE TV CODES	
CABLE BOX, SATELLITE BOX, OR OTHER SET-TOP BOX	
<b>Cablevision</b>	068, 069, 078, 096, 100, 164, 168, 229, 026
<b>Charter</b>	2002, 1204, 1423, 1517, 0171, 1963, 0463, 1463, 0842, 1326, 167, 415, 424, 450, 456, 461, 507, 523, 567, 577, 586
<b>Comcast</b>	10171, 11204, 11326, 11463, 11517, 11641, 11780, 11785, 11892, 11963, 12002
<b>Cox</b>	1326, 1463
<b>Direct TV</b>	10171, 11204, 11326, 11517, 11564, 11641, 11963, 12002
<b>Dish Network</b>	720
<b>Time Warner</b>	400, 450, 461, 456, 10463, 1463, 0463
<b>Tivo</b>	0091
<b>Verizon</b>	0198, 0490
UNIVERSAL REMOTE CONTROLS	
<b>One for All</b>	0054
<b>Philips</b>	0198, 0490
<b>RCA</b>	135
<b>Sony</b>	068, 069, 078, 096



**Power**  
Turns your TV on or off.

**Numbers**  
Enter channel numbers.

**ENTER**  
Confirms selections or opens sub-menus.

**MENU**  
Opens the on-screen menu.

**EXIT**  
Closes the on-screen menu.

**ASPECT**  
Changes how the picture is displayed on the screen.

**Volume**  
Changes the volume.

**SLEEP**  
Sets the sleep timer.

**FAVORITE**  
Opens the Favorite Channel List.

**INlink media controls**  
Control HDMI-CEC devices connected to your TV.

**INPUT**  
Opens the **INPUT SOURCE** list.

**RECALL**  
Returns to the previous channel.

**Arrows**  
Navigate in on-screen menus.

**HOME**  
Opens the MHL device's home menu when an MHL device is plugged in.

**INFO\***  
Opens a TV status banner.

**CCD**  
Turns closed captioning on or off.

**MUTE**  
Mutes the sound.

**Channel**  
Changes the TV channels.

**MTS/SAP**  
Cycles through mono, stereo, and secondary audio for analog programs or selects the language for digital programs.

**PICTURE**  
Selects the video mode.

**AUDIO**  
Selects the audio mode.

INSIGNIA

**One-year limited warranty**  
Visit [www.insigniaproducts.com](http://www.insigniaproducts.com) for details.

**Need additional help?**  
See your online *User Guide*! This comprehensive guide includes everything from basic how-to steps to more advanced features. A copy of your *User Guide* is not provided in the box but is available online. Go to [www.insigniaproducts.com](http://www.insigniaproducts.com), then click **Support & Service**. Enter your model number in the box under **Manual, Firmware, Drivers & Product Information**, then click **►**.  
Check out our **online community forum** at [www.insigniaproducts.com](http://www.insigniaproducts.com) for helpful information from other Insignia TV owners.

**We're here for you**  
[www.insigniaproducts.com](http://www.insigniaproducts.com)  
For customer service, call:  
**877-467-4289**  
(U.S./Canada markets)

INSIGNIA is a registered trademark of BBY Solutions, Inc.  
Registered in some countries.  
Distributed by Best Buy Purchasing, LLC,  
7601 Penn Ave South, Richfield, MN 55423 U.S.A.

©2013 BBY Solutions, Inc.  
All Rights Reserved  
1-877-467-4289  
[www.insigniaproducts.com](http://www.insigniaproducts.com)



For an up-to-date list of codes for other cable providers and universal remote brands, scan this **QR code** or visit [www.insigniaproducts.com/remotecodes](http://www.insigniaproducts.com/remotecodes)