



QUICK SETUP GUIDE

Portable Air Conditioner

NS-AC8PWH9 / NS-AC8PWH9-C

IMPORTANT

The air conditioner unit must always be stored and transported upright, otherwise you may cause irreparable damage to the compressor. In case of doubt, we suggest that you wait for at least 24 hours before you start the air-conditioning unit.

SAFETY INFORMATION

- 1

Read and keep these instructions.
- 2

Heed all warnings.
- 3

Follow all instructions.
- 4

Do not use this machine near water.
- 5

Clean only with a damp cloth.
- 6

Do not block any ventilation openings. Install in accordance with the manufacturer's instructions.
- 7

Do not install near any heat sources such as radiators, heat registers, stoves, or other apparatus (including amplifiers) that produce heat.
- 8

Do not defeat the safety purpose of the polarized or grounding-type plug. A polarized plug has two blades with one wider than the other. A grounding-type plug has two blades and a third grounding prong. The wide blade or the third prong are provided for your safety. If the provided plug does not fit into your outlet, consult an electrician for replacement of the obsolete outlet.
- 9

Protect the power cord from being walked on or pinched particularly at plugs, convenience receptacles, and the point where they exit from the machine.
- 10

Do not attempt to modify or extend the power cord of this machine.
- 11

Unplug this machine during lightning storms or when it will not be used for long periods of time.
- 12

Make sure that the available AC power matches the voltage requirements of this machine.
- 13

Do not handle the plug with wet hands. This could result in an electric shock.
- 14

Unplug the power cord by holding the plug, never by pulling the cord.
- 15

Do not turn the machine on or off by plugging or unplugging the power cord.
- 16

Turn off the machine before unplugging it.
- 17

Refer all servicing to qualified service personnel. Servicing is required when the machine has been damaged in any way, such as power-supply cord or plug is damaged, liquid has been spilled or objects have fallen into the machine, the machine has been exposed to rain or moisture, does not operate normally, or has been dropped.
- 18

To reduce the risk of fire or electric shock, do not expose this machine to rain, moisture, dripping, or splashing, and no objects filled with liquids should be placed on top of it.
- 19

Batteries should not be exposed to excessive heat such as sunshine, fire, or the like.

CAUTION: Danger of explosion if batteries are incorrectly replaced. Replace only with the same or equivalent type.

Additional precautions

- This machine is intended for household use. Do not use for any other purpose.
- Use this machine indoors in a dry location only. Do not use it outdoors.
- Do not place heavy objects on the machine, as this could damage it.
- Wipe the machine with a soft cloth to clean it. Do not use wax, thinner, or irritating detergents.
- Do not allow children or pets to drink the water discharged by the machine.
- Do not disassemble or attempt to repair the machine yourself.
- Do not plug this machine into an outlet with several other high electrical usage appliances.
- Keep the machine away from heat sources and avoid direct sunlight.
- If the machine is making a loud noise or producing an odor or smoke, switch off it, disconnect the plug, and immediately try to determine the cause.
- Do not place heavy objects on the power cord to avoid it being crushed and causing an electric shock.
- Do not put your fingers or hard objects into the outlet air guide bars.
- Turn the machine off and unplug it if there is water inside it, then contact qualified service personnel for servicing.
- Turn the machine off and unplug it before cleaning, moving, or servicing it.
- To avoid injury, do not allow children or other individuals with special needs to touch or operate the machine. The machine should only be used with adult supervision.
- Place the air conditioner on a flat surface and upright to ensure the normal operation of the compressor.
- Do not use the machine near gasoline or other flammable liquids.
- Do not use aerosol sprays or other solvents near the machine. This may cause plastic deformation or possibly damage the electrical components of the machine.
- Avoid restarting the air conditioning unit unless three minutes have passed since being turned off, or the compressor may get damaged.

WARNING: ELECTRIC SHOCK HAZARD

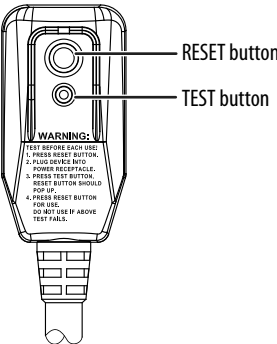
Failure to follow these instructions can result in electric shock, fire, or death.

- **This unit must be properly grounded.**
- **Do not, under any circumstances, cut or remove the grounding plug.**
- **If you do not have a properly grounded AC outlet, or if there is any doubt that the outlet is not properly grounded, a qualified electrician should check the outlet and circuit and, if necessary, install a properly grounded outlet.**
- **This air conditioner must be plugged into a grounded 115V, 60Hz AC outlet, protected by a 15 amp time-delay fuse or circuit breaker.**
- **This air conditioner must be installed in accordance with national wiring codes.**
- **Do not alter or modify the plug or cord of this air conditioner.** If the power cord becomes worn or damaged, the cord should only be replaced by a qualified service technician using genuine replacement parts.
- **Do not use an extension cord.**

ELECTRICAL SAFETY

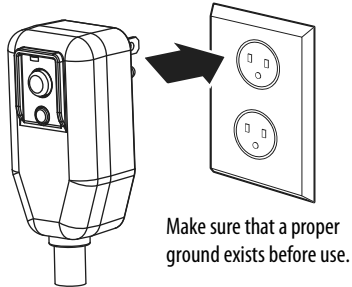
Integrated circuit breaker

For additional safety, the power cord on this air conditioner features an integrated circuit breaker. You can test and reset the circuit breaker using the buttons provided on the plug case. Consult a qualified electrician or service person if the grounding instructions are not completely understood, or if doubt exists as to whether the air conditioner is properly grounded.



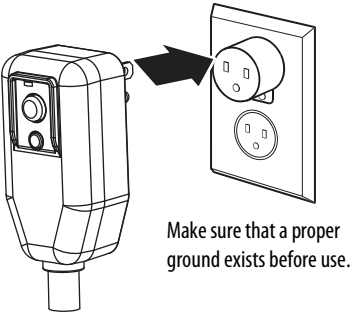
The circuit breaker should be tested periodically by pressing the **TEST** button, then pressing the **RESET** button. If the **TEST** button does not cause the circuit breaker to trip, or if the **RESET** button does not stay engaged, unplug the air conditioner immediately and contact an Insignia technician.

Preferred grounding method



Temporary grounding

Due to potential safety hazards, we strongly discourage the use of an adapter plug. If an adapter plug must be used for a temporary connection, use only a UL-listed adapter with a minimum capacity of 120V ~ 60Hz, 13A, and 1560W. Make sure that the large slot of the adapter is aligned with the large slot in the outlet.



PACKAGE CONTENTS

- Portable Air Conditioner
 - Remote control with batteries
 - Exhaust nozzle
 - Assembly hardware
 - Drain hose
- Exhaust hose
 - Hose adapter
 - Sealing gaskets
 - Window seal plate assembly
 - Quick Setup Guide

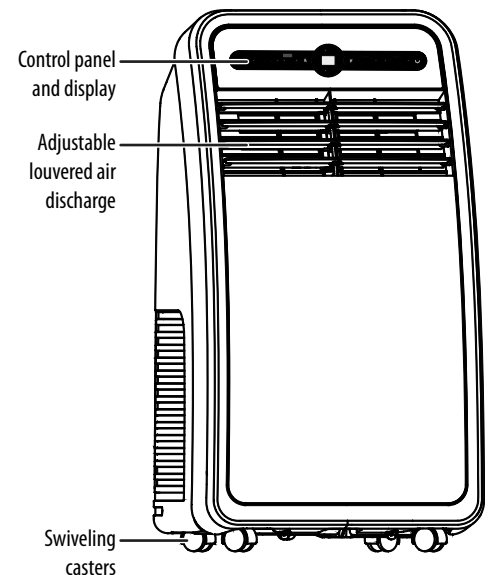
FIND YOUR USER GUIDE ONLINE!

- 1 Go to www.insigniaproducts.com.
- 2 Use the search bar to find **NS-AC8PWH9** or **NS-AC8PWH9-C**.
- 3 Select **Support & Downloads**.
- 4 Next to *User Guide*, select the language you want.

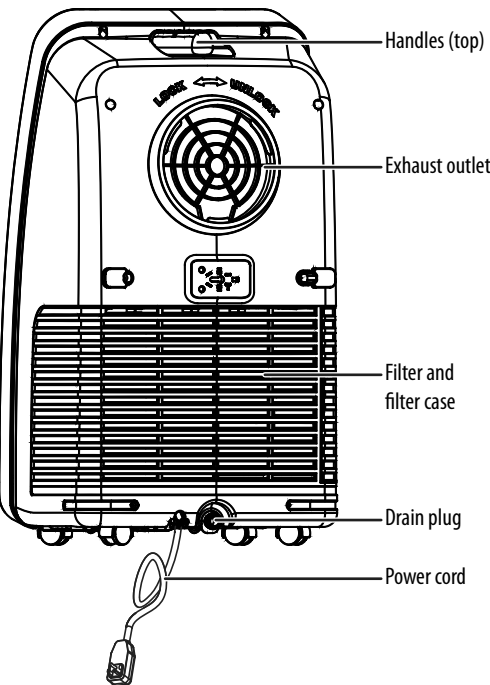
FEATURES

- 4,500 BTU DOE/8,000 BTU ASHRAE rated cooling capacity
 - 3-in-1 design (air conditioner, dehumidifier, and fan)
 - Auto On/Off
- Programmable timer and remote control
 - Digital controls with LED display
 - Multiple fan speeds with auto-control

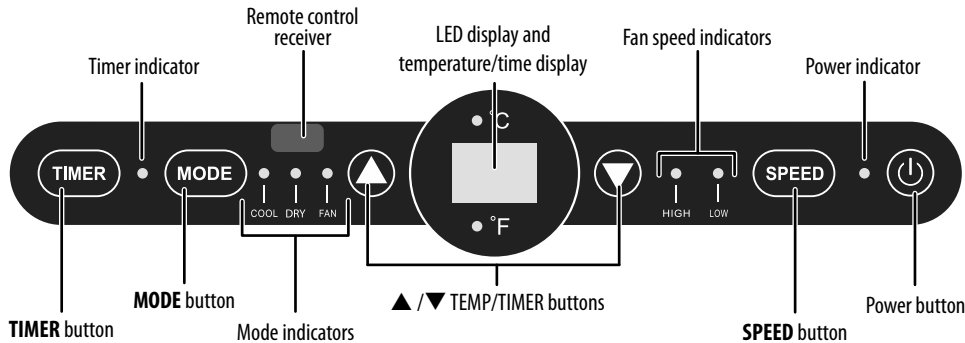
Front



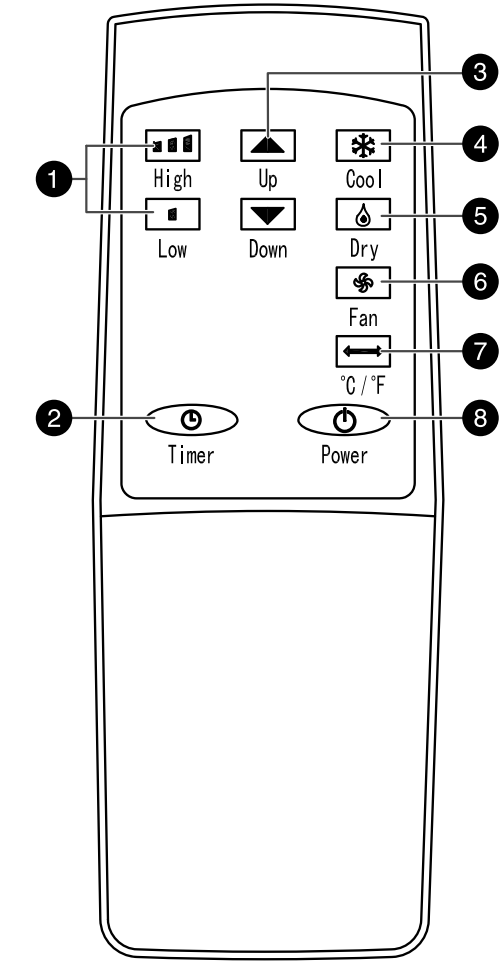
Back



Control panel



Remote control



#	ITEM	DESCRIPTION
1	Speed settings	Press to raise or lower the fan speed.
2	Timer button	Press to set the air conditioner to turn on or off automatically.
3	▲(up) and ▼(down) buttons	In cool mode, press to raise (▲) or lower (▼) the temperature setting. In timing mode, press to turn the timer on (▲) or off (▼).
4	Cool button	Press to set the air conditioner to Cooling mode.
5	Dry button	Press to set the air conditioner to Dry mode (runs both the fan and dehumidifier).
6	Fan button	Press to turn on the fan only (no cooling).
7	°C /°F button	Press to switch between Celsius and Fahrenheit.
8	Power button	Press to turn the air conditioner on or off.

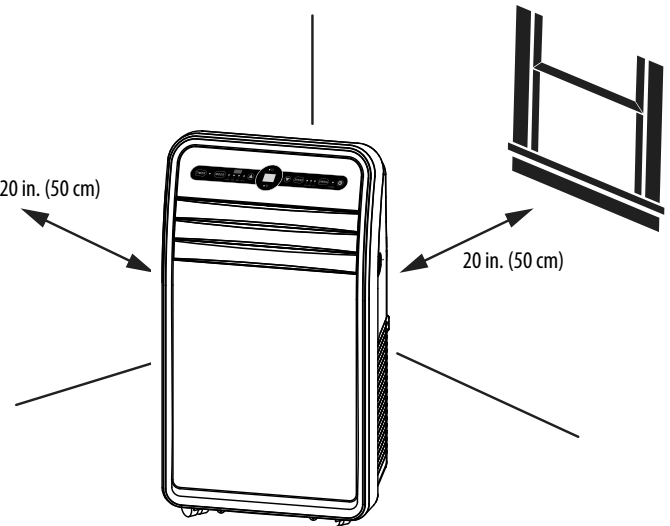
SETTING UP YOUR PORTABLE AIR CONDITIONER

Before using your portable air conditioner

- Remove and store (optional) packing materials for reuse.
- Remove any shipping tape before using the air conditioner.
- Remove tape residue with liquid dish soap and a damp cloth. Do not use sharp tools, alcohol, thinners, or abrasive cleaners to remove adhesive, which could damage the finish.

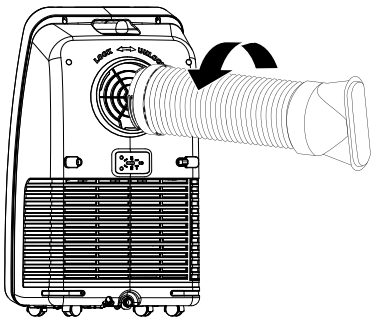
Placing your air conditioner

- Place the unit on a flat, dry area near a window, so you can use the hose and diffuser to connect the air conditioner to the window installation kit in order to vent the exhaust air outside.
- To maintain good air circulation and optimum machine performance, leave a 20 in. (50 cm) space around it.

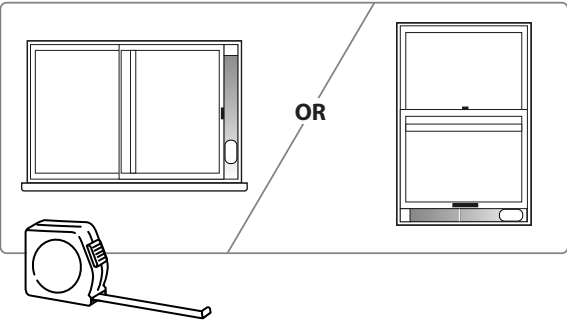


INSTALLING YOUR AIR CONDITIONER

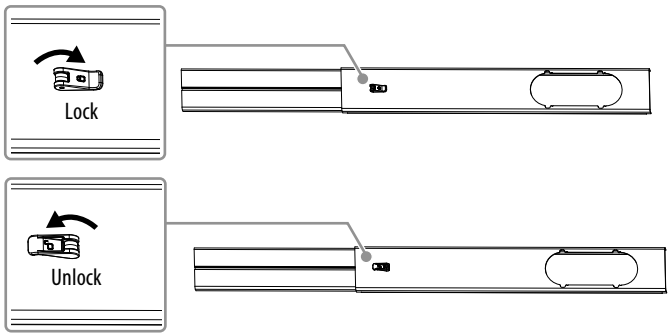
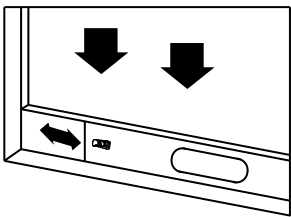
- 1 Screw the exhaust hose to the exhaust outlet on the back of your air conditioner, then screw the hose adapter to the other end of the hose.



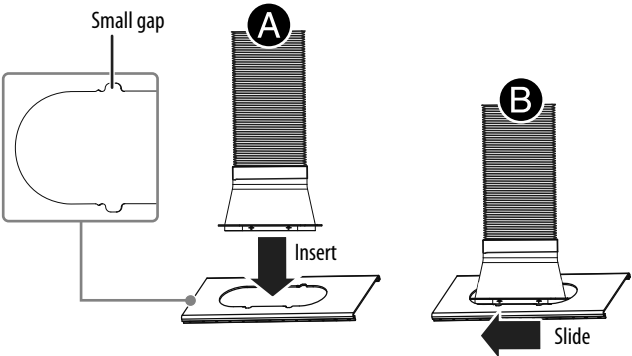
- 2 Measure the window size.



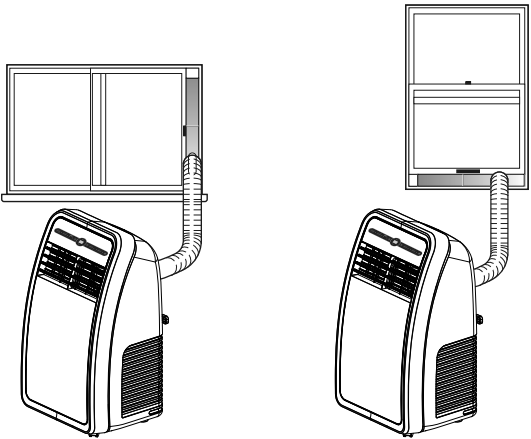
- 3 Install the window sealing plate in the window opening, adjusting the length to fit the window opening and lock it. **Note:** Note: The window sealing kit works with sliding windows.



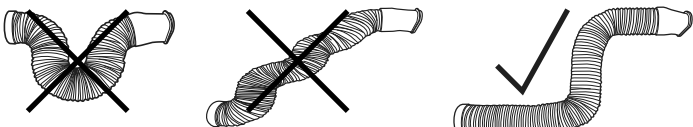
- 4 Insert the hose adapter into the vent panel (A), then slide the adapter until it clicks into place (B).



Optional: Secure the venting hose to the vent adapter using the included screw. See your *User Guide* for details.

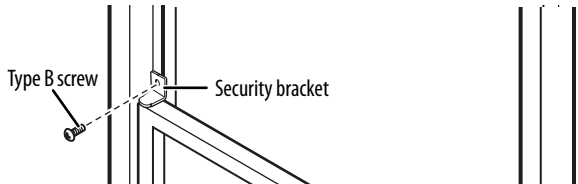


Note: For optimum performance, make sure the venting hose is not twisted and is free of kinks. For better efficiency, shorten the hose by squeezing its sections together.



Caution: The exhaust duct is designed especially for this air conditioner. Replacing or lengthening the duct could result in damage to your unit.

- 5 **Optional:** Install the security bracket with the type B screw.

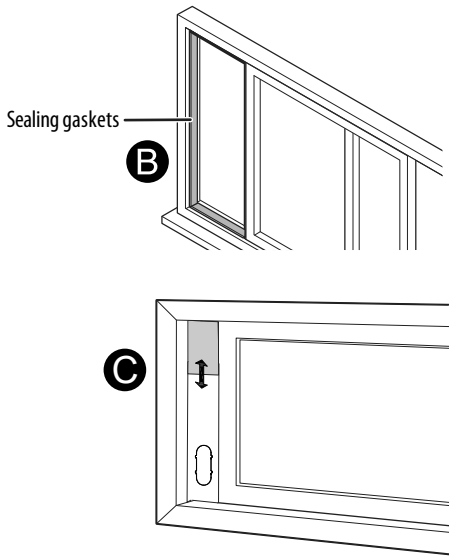


Running your air conditioner in DRY mode

If you want to continuously drain the water from your air conditioner and never have to manually drain the collection tank, see your online *User Guide*.

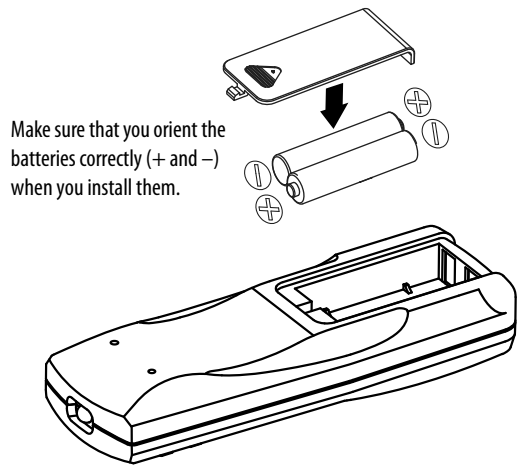
- 6 **Optional:** Install the sealing gaskets.

- A Remove the sealing gaskets (two 60" rolls) from the accessory bag.
- B Remove the paper on the sealing gasket to expose the adhesive, then stick the sealing gasket to the edges of the opening where the sealing plate will go, to prevent warm air from entering the room when mounted.
- C Adjust the sealing plate to fit the opening.
- D Install the sealing plate.



INSTALLING THE BATTERIES

- Insert two AAA batteries (provided) into the remote control.



Turning your air conditioner on and selecting the mode

Note: See your *User Guide* for more information about the types of sounds that your air conditioner may make.

- 1 Press **Power** (⏻) to turn your air conditioner on.
- 2 On your air conditioner, press **Mode** repeatedly to select Cool, Dry, or Fan mode.
 - **Cool mode:** The air conditioner cools your room.
 - **Dry mode:** The fan and dehumidifier run to remove humidity from the air. Dry mode does not cool the room.
 - **Fan mode:** The fan circulates air, but does not cool it.
- 3 In Cool or Fan mode, press **SPEED** (AC unit) or **High/Low** (remote control) to adjust the fan's speed. **Note:** In dry mode, the fan speed cannot be changed.

Switching between Celsius and Fahrenheit

- Press **°C/°F** on the remote control.

Setting a timer

Set your air conditioner to turn off or turn on after a delay of up to 24 hours.

- **Automatic off:** Press ▲ or ▼ while the air conditioner is running.
- **Automatic on:** Press ▲ or ▼ while the air conditioner is off. The timer indicator lights up when the timer is set.

See your online *User Guide* for more information on using your air conditioner.

Understanding LED display messages

ITEM	DESCRIPTION
FL	The internal water tank is full and needs to be emptied. See your online <i>User Guide</i> for more information.
E1	Coil temperature sensor error. Turn off your air conditioner and call a professional maintenance technician or service center.
E2	Indoor temperature sensor error. Turn off your air conditioner and call a professional maintenance technician or service center.
E4	Anti-freezing protection. The air conditioner coil temperature is too low and the unit has turned off automatically. The unit resets itself when the temperature reaches 46.4°F (8°C).

TROUBLESHOOTING

For troubleshooting information see your online *User Guide*.

SPECIFICATIONS

For specifications see your online *User Guide*.

ONE-YEAR LIMITED WARRANTY

Visit www.insigniaproducts.com for details or see your online *User Guide*.

CONTACT INSIGNIA:

For customer service, call 1-877-467-4289 (U.S. and Canada) www.insigniaproducts.com

INSIGNIA is a trademark of Best Buy and its affiliated companies
Distributed by Best Buy Purchasing, LLC
7601 Penn Ave South, Richfield, MN 55423 U.S.A.
©2022 Best Buy. All rights reserved.