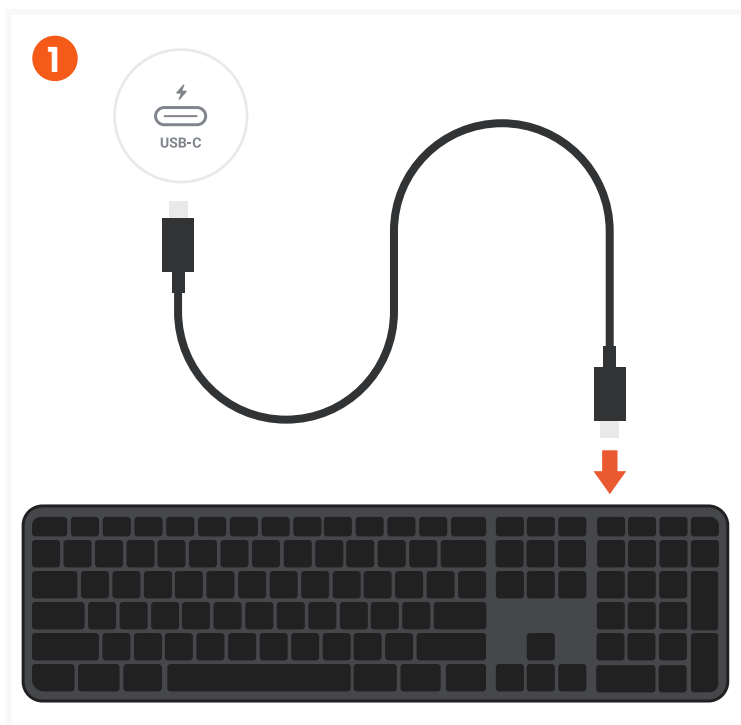


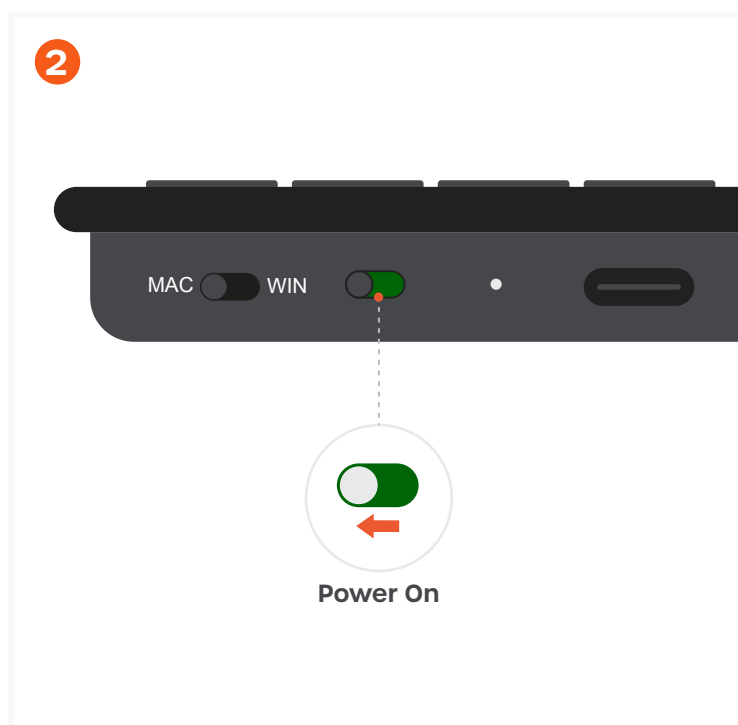
SLIM EX3 WIRELESS KEYBOARD

SKU: ST-KEX3C-EN / ST-KEX3S-EN

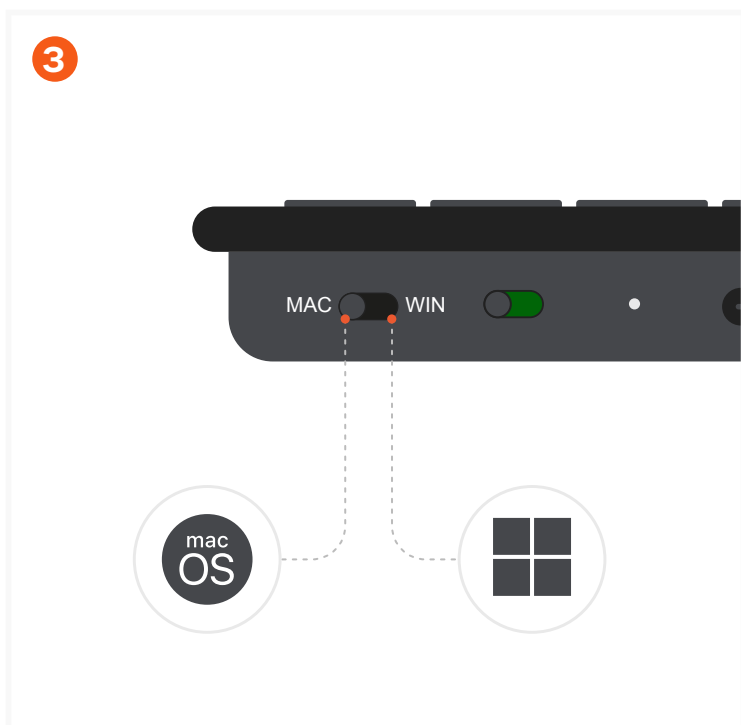


Before use, fully charge the Slim EX3 Keyboard using the included USB-C cable.

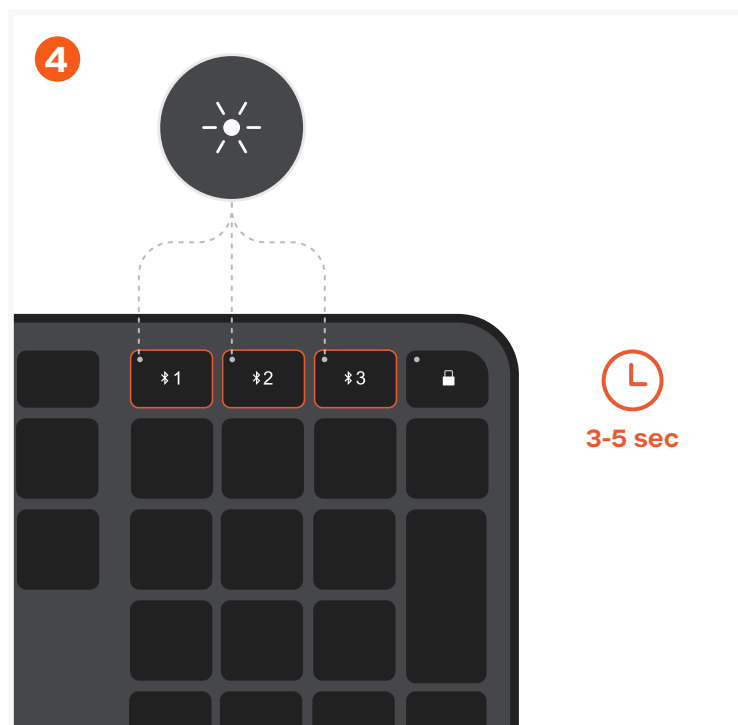
The keyboard can be used while charging.



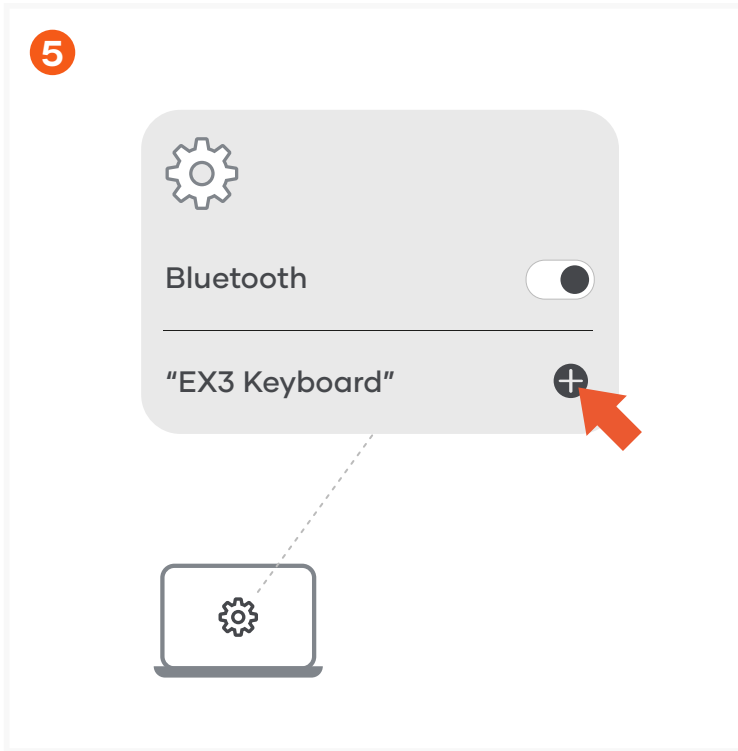
Turn on the keyboard using the power switch on the top edge.



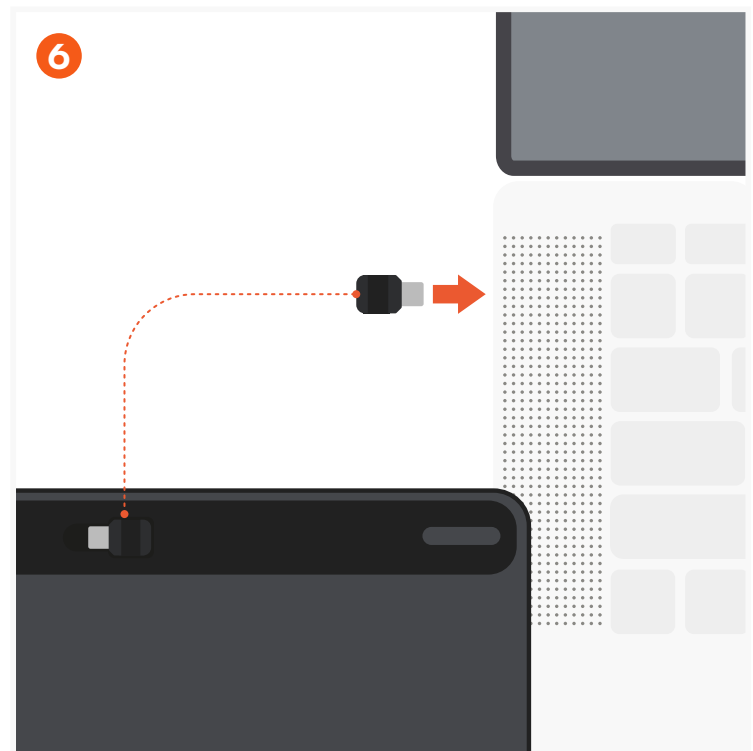
Select the operating system using the dedicated OS switch.



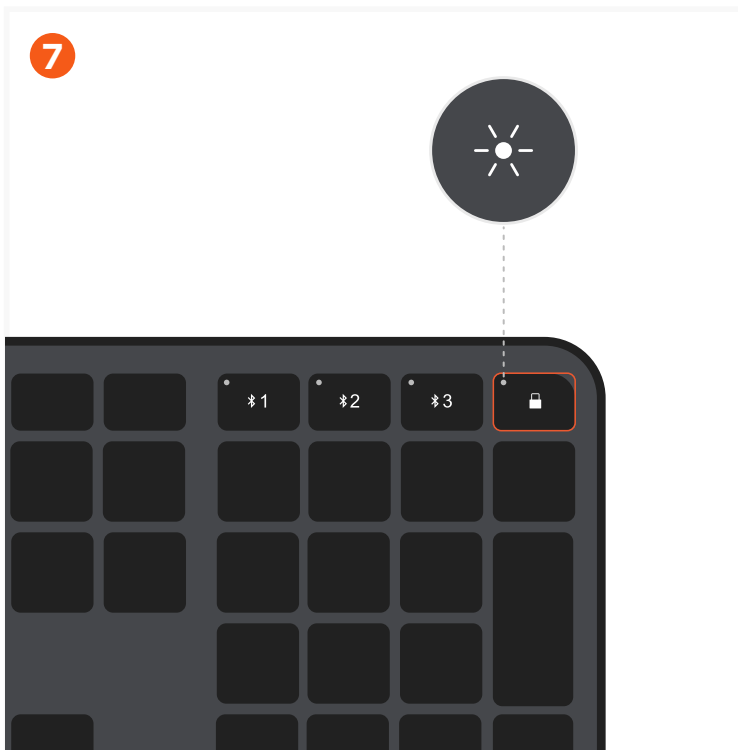
To enter Bluetooth pairing mode, press and hold the desired Bluetooth key (1-3) for 3-5 seconds. The white LED will blink to indicate pairing mode.



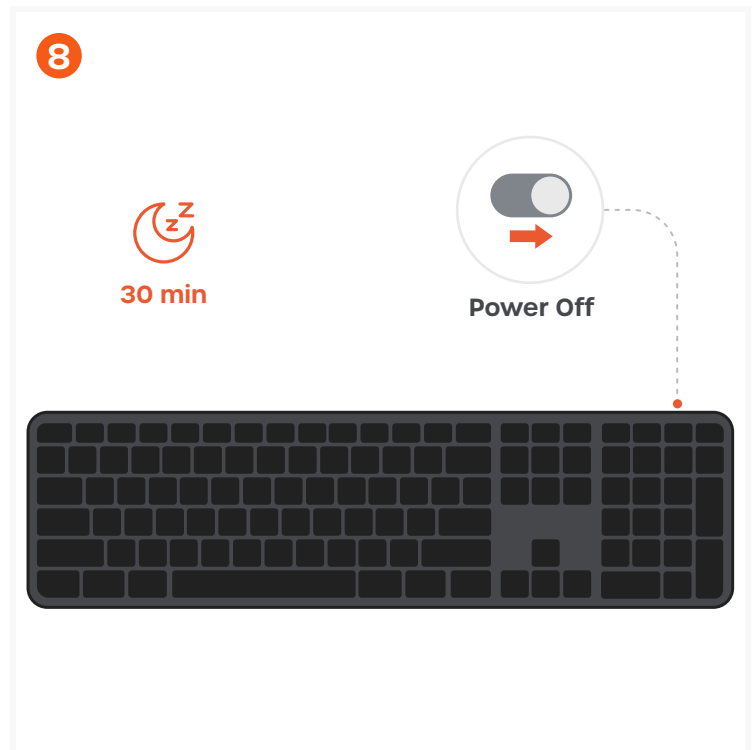
Enable Bluetooth on your device and select "EX3 Keyboard" from the list to complete the connection. Up to three devices can be connected via Bluetooth.



To connect a fourth device, insert the USB-C 2.4GHz dongle into your device.



Press the key with the USB-dongle icon to switch to the 2.4GHz connection and connect to the fourth device.



After 30 minutes of inactivity, the keyboard will enter sleep mode. Press any key to wake it—the keyboard will reconnect automatically. Turn off the keyboard using the power switch when not in use.