

Just wait until you hear this

# **Roku TV™** Wireless Soundbar

Quick Start Guide

## What's included



Roku TV™ Wireless Soundbar



Wall mount template



AC power cord



Wall bracket screw x2



Wall mounting screw x2



Wall anchor x2



Wall bracket x2

## Details



## Let's get started

1

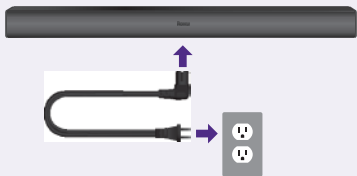


### STEP 1: Prepare your Roku TV

Connect your TV to your wireless network and the internet, if it isn't already.

Visit **Settings > System > Software update** to ensure your software is up to date.

2



## STEP 2: Connect your soundbar to power


Plug in your soundbar using the AC power cord and wait for the voice prompt.

The LED light on the front of the soundbar should illuminate.

3



## STEP 3: Pair your soundbar

Using your Roku TV remote, press and hold the  button for 5 seconds to enter pairing mode. Choose **Wireless soundbar** from the on-screen options and select **Continue** to begin the pairing process.

## Placing your soundbar

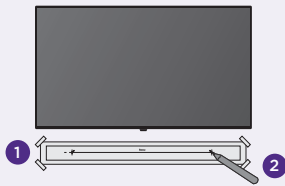
A



## Below your TV

Place your soundbar at the front edge of your TV stand for the best sound experience.

B

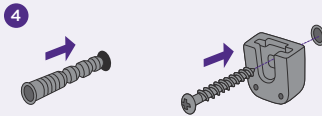


## Wall mounting

You can wall mount your soundbar with the included hardware and wall mount template.

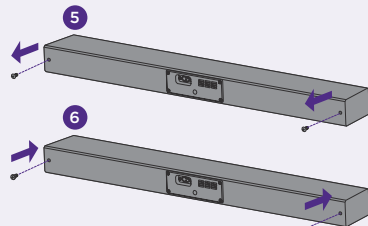
1. Stick the wall mount template on the wall with tape, leaving at least 2 inches below the center of your TV. Use a level to ensure the template is positioned accurately.

B



2. Mark where you'll be drilling using the mounting holes on the template, then remove the template.
3. Drill screw holes at the markings and insert the wall anchors.
4. Insert the wall bracket screws through the wall brackets and into the wall anchors. Fix and tighten.

B



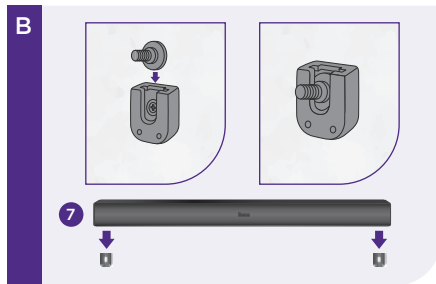
5. Remove the screws from the back of the soundbar and set them aside.
6. Tighten the wall mounting screws into the screw holes in the back of the soundbar.

**Flip to continue wall mount** ➡

**Tools you'll need:** Phillips screwdriver, drill, pencil, tape, and level

## Placing your soundbar

B



7. Plug in your soundbar using the AC power cord, then hang it on the wall brackets.
8. Power on your Roku TV, then refer back to Step 1 to pair your soundbar.

## Tips and tricks

### Using sound settings

While streaming, press **[\*]** to view sound settings, like:

- **Volume leveling**  
Helps keep your volume consistent and quiets loud commercials.
- **Speech clarity**  
Improves clarity of voices so your favorite TV is easier to hear.
- **Night mode**  
Lowers loud scenes while boosting quiet ones so you don't wake the house.

### Pairing a Bluetooth® device

- From the home screen, go to **Settings > Remotes & devices > Smartphones & tablets**.
- Then choose **Add a new smartphone or tablet** and follow the instructions.

Visit [go.roku.com/soundbar](https://go.roku.com/soundbar) for more information

## Easily expandable

### Roku Wireless Bass



Add even deeper, richer bass

Sold separately.

**Need more help?**

**support.roku.com**



**Video  
tutorials**



**Wi-Fi®  
help**

**See what's  
streaming for free,  
tips, and more**

**roku.com/blog**

**Follow us**



**Roku**

© 2023 Roku, Inc. All rights reserved. Roku, Roku TV, and the Roku logo are the trademarks of Roku, Inc. All other logos and trademarks herein are the property of their respective owners.



4100001001\_01