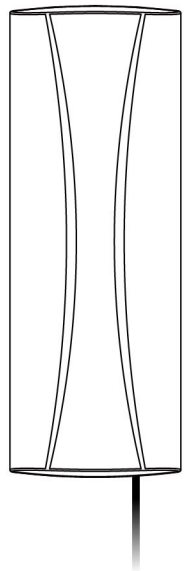


正 210mm

反



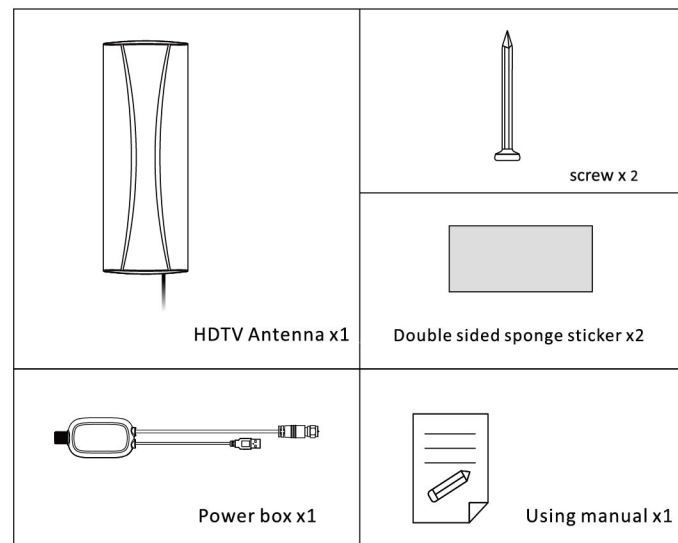
NAA-352



Digital HDTV Antenna User Manual

Before using this antenna, please read the instruction manual carefully.

Package Contents

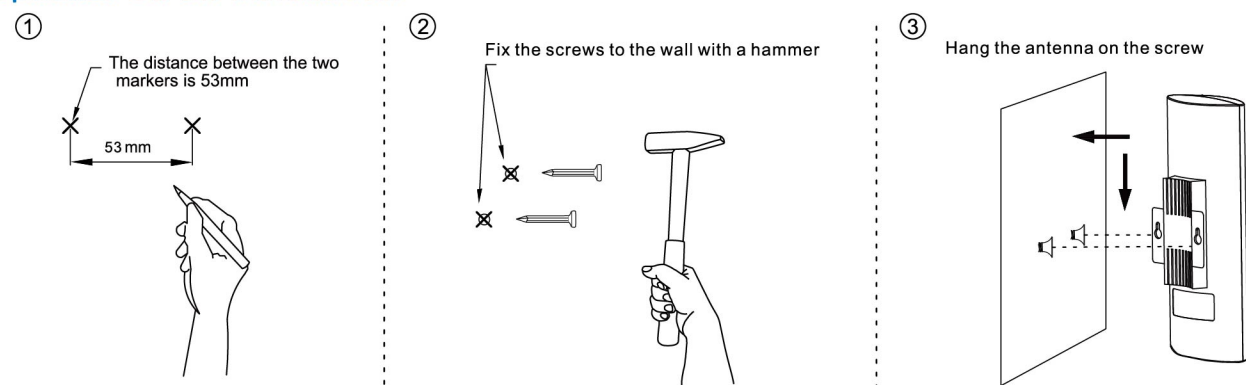


Specifications

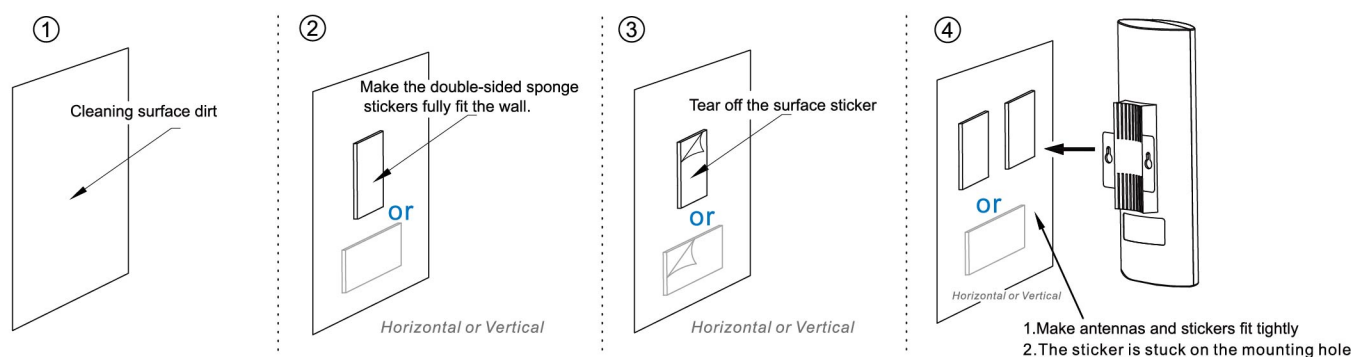
- 1.Frequency range: VHF 174-230Mhz ; UHF 470-862Mhz
- 2.VSWR:≤2.0: 1
- 3.Impedance: 75Ω
- 4.Gain:28dBi
- 5.Connector: F Male or customized
- 6.Power supply: USB port (5V /500mA)
- 7.Polarization: Horizontal / Vertical

Antenna Installation

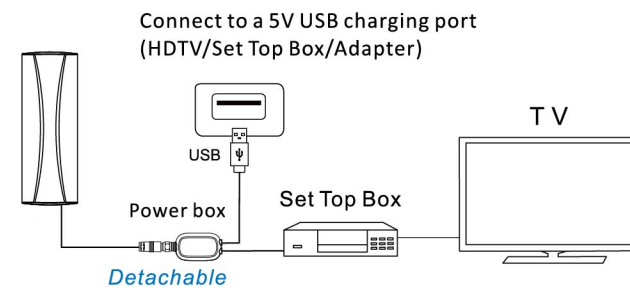
Option1: Screw Installation (Recommended for outdoor use)



Option2: Sticker installation (Recommended for indoor use)

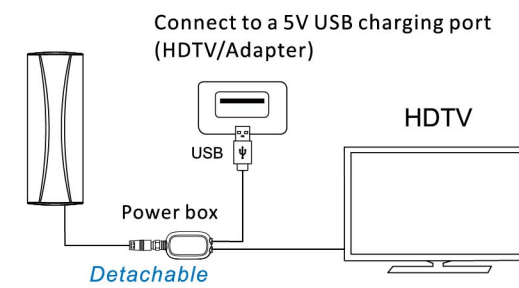


How to Connect the Antenna to TV ?



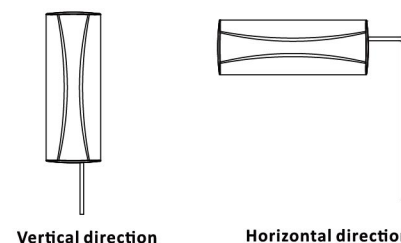
Connected to Set Top Box

- (1) Connect the F male of antenna to the F female of the power box.
- (2) Connect the F male or IEC male of the power box to the ANT/IN connector on TV set Top Box.
- (3) Power the antenna by plugging the antenna power box's USB connector into an open USB port on the TV or the set Top Box or into a wall outlet with one power adapter (no included).
- (4) In order to be conveniently placed outdoors, the product provides a detachable power box, but the antenna must be connected to the power box to use.



Connected to TV with HDTV tuner

Installation direction



Remark:

Reception quality and the numbers of channels received are dependent on multiple factors like distance from TV broadcast tower, broadcast power, line of sight, terrain, metal construction materials and other environmental factors.

Note: for the best reception, please check the following tips

1. Please make sure your TV has a HDTV Tuner, if not, kindly suggest you buy a Digital Converter Box .
2. Not all digital signals are High Definition. Ensure your digital receive is a HD receiver otherwise no HD channels can be viewed.
3. Make sure you install the antenna and antenna power box correctly, the antenna power box comes with an USB cable, and this cable should be powered through anUSB charging port, the indicator light will be on when working .
4. Please try to put the antenna to a higher location, like on a wall, better close to a window and no obstacle outside, trees, buildings etc Recommend mounting it to the window for best result .
5. Again to turn around the antenna to find the best direction. Times rescan for channels after moving the antenna .
6. If the received signal is not good, try changing the antenna direction, whether the installation direction is horizontal or vertical. and then rescan the channel .
7. TV reception capacity depends on the distance among your home, transmitting tower and surrounding environments .
8. Reception will vary based on factors like geography and location of the broadcast signal, antenna hills, buildings and even tall trees can impact reception .
9. RV with metal roofs and/or awnings will not benefit from this antenna .
10. You need to retune your Free view TV's and digital receiver from time to time to ensure you are receiving all available services. Retuning takes only a few minutes and can be done with your remote control.
11. This digital HDTV antenna is intended for indoor and outdoor use .



IPX4



lightning protection



Cold-resistant



UV-resistant

Keep away from some appliances that use resistive load such as following:



Electronic oven/Heater/Electric cooker/Electric microwave/ electric blanket and so on.



Made in china