

FCC WARNINGS

Warning: Changes or modifications to this unit not expressly approved by the party responsible for compliance could void the user's authority to operate the equipment.

NOTE: This equipment has been tested and found to comply with the limits for a Class B digital device, pursuant to Part 15 of the FCC Rules. These limits are designed to provide reasonable protection against harmful interference in a residential installation. This equipment generates, uses, and can radiate radio frequency energy and, if not installed and used in accordance with the instructions, may cause harmful interference to radio communications. However, there is no guarantee that interference will not occur in a particular installation. If this equipment does cause harmful interference to radio or television reception, which can be determined by turning the equipment off and on, the user is encouraged to try to correct the interference by one or more of the following measures:

- Reorient or relocate the receiving antenna.
- Increase the separation between the equipment and receiver.
- Connect the equipment into an outlet on a circuit different from that to which the receiver is connected.
- Consult the dealer or an experienced radio/TV technician for help.

ADDITIONAL WARNINGS AND PRECAUTIONS

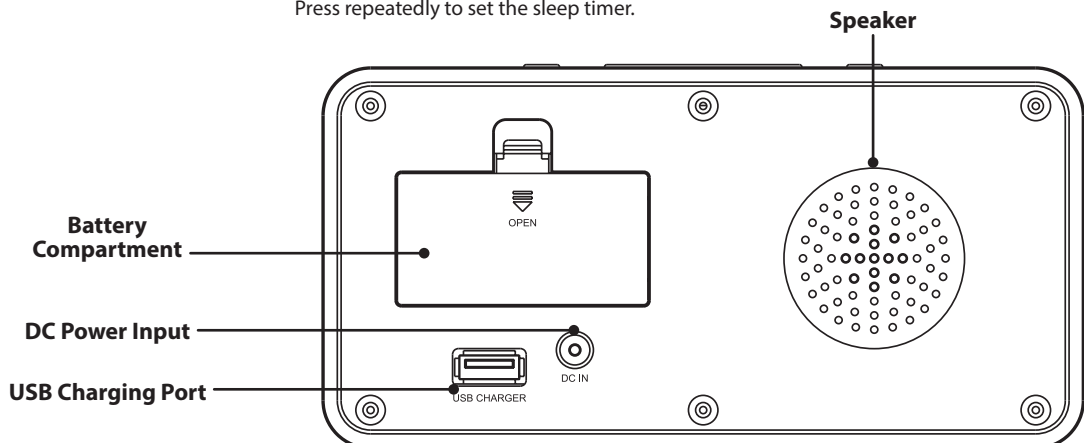
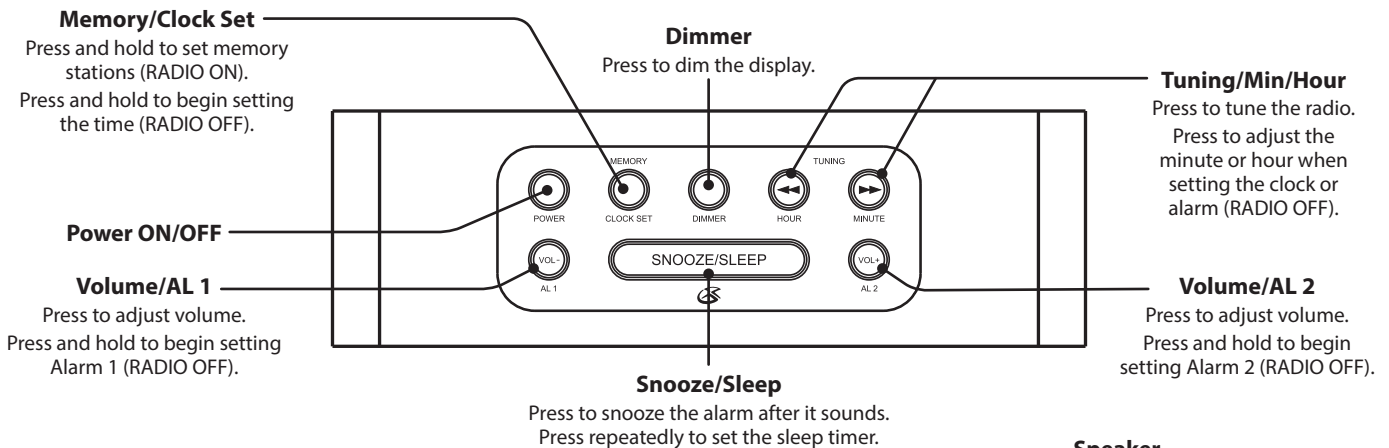
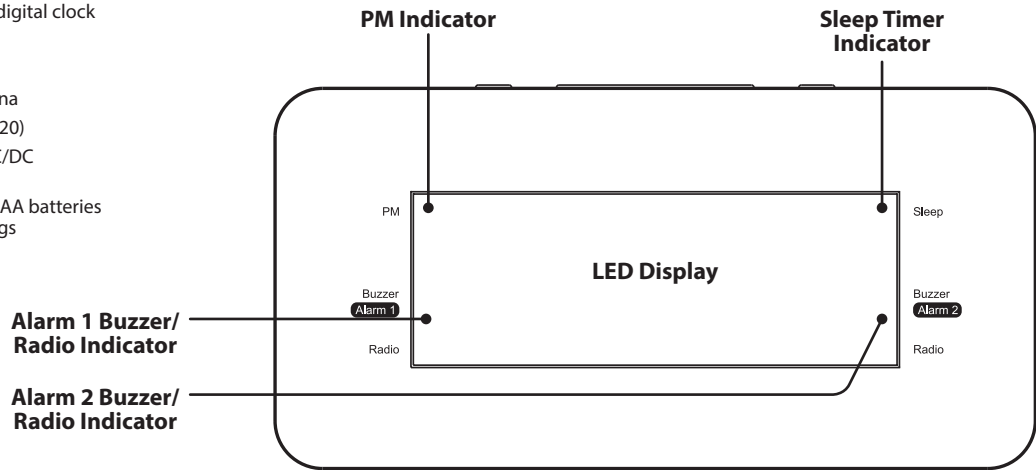
- **CAUTION:** TO PREVENT ELECTRIC SHOCK, MATCH WIDE BLADE OF PLUG TO WIDE SLOT, FULLY INSERT.
- Mains plug is used as disconnect device and it should remain readily operable during intended use. In order to disconnect the apparatus from the mains completely, the mains plug should be disconnected from the mains socket outlet completely.

- Caution marking is located at the rear or bottom of the apparatus.
- **WARNING:** To reduce the risk of fire or electric shock, do not expose this apparatus to rain, moisture, dripping, or splashing.
- **CAUTION:** Use of controls or adjustments or performance of procedures other than those specified may result in hazardous radiation exposure.
- **WARNING:** Changes or modifications to this unit not expressly approved by the party responsible for compliance could void the user's authority to operate the equipment.
- **WARNING:** Do not place this unit directly onto furniture surfaces with any type of soft, porous, or sensitive finish. As with any rubber compound made with oils, the feet could cause marks or staining where the feet reside. We recommend using a protective barrier such as a cloth or a piece of glass between the unit and the surface to reduce the risk of damage and/or staining.
- **CAUTION:** Danger of explosion if battery is incorrectly replaced. Replace only with the same or equivalent type.
- **WARNING:** Shock hazard - Do Not Open.
- Battery shall not be exposed to excessive heat such as sunshine, fire or the like.
- Keep new and used batteries away from children. If the battery compartment does not close securely, stop using the product and keep it away from children.
- **WARNING: DO NOT INGEST BATTERY, CHEMICAL BURN HAZARD.** If you think batteries might have been swallowed or placed inside any part of the body, seek immediate medical attention.
- Do not mix old and new batteries.
- Completely replace all old batteries with new ones.
- Batteries should be recycled or disposed of as per state and local guidelines.
- **WARNING:** This product may contain chemicals known to the State of California to cause birth defects, or other reproductive harm (California Prop 65). Wash hands after handling.
- This product meets and complies with all Federal regulations.

Overview

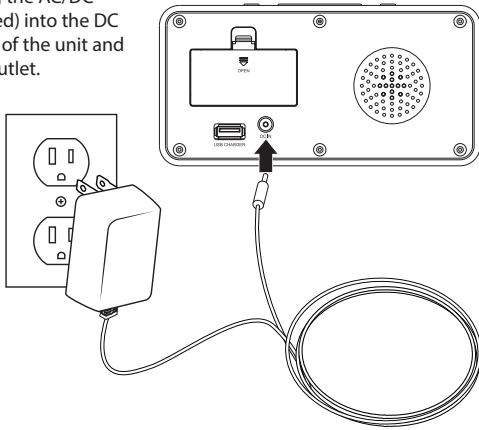
Features

- 1.2" green LED display with digital clock
- Dual alarm
- Sleep timer
- FM radio with built-in antenna
- Radio station presets (up to 20)
- DC power input: requires AC/DC power adapter (included)
- Battery backup: requires 2 AAA batteries for clock and last user settings



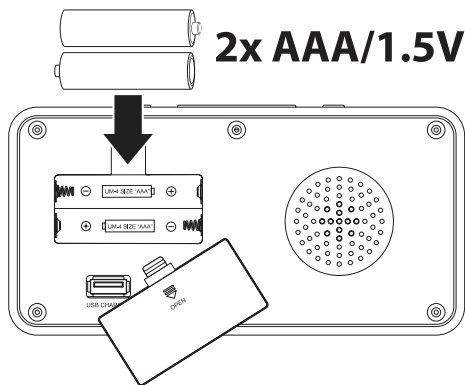
Power, Battery Backup, and Charging

To power the unit, plug the AC/DC power adapter (included) into the DC power port on the rear of the unit and a standard AC power outlet.

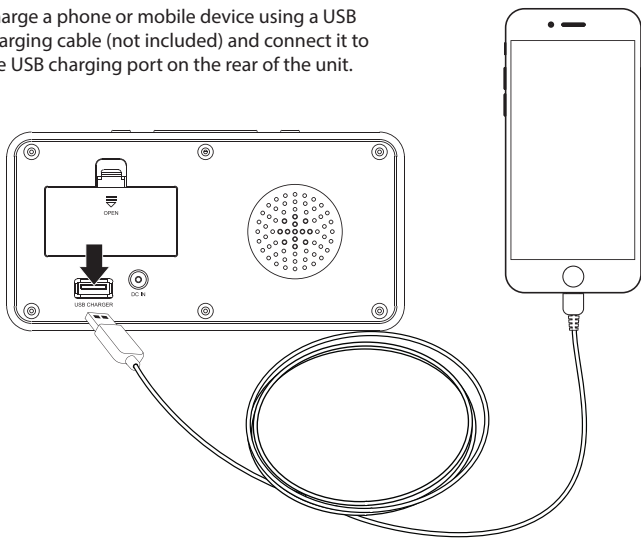


Battery backup is used to power the clock and save last user settings.

Requires 2 AAA batteries (not included).



Charge a phone or mobile device using a USB charging cable (not included) and connect it to the USB charging port on the rear of the unit.



Clock

Setting the Clock

1. With the unit OFF, press and hold the **Clock Set** button until the display begins to blink, then release the button.
2. Press the **Hour** button to set the hour. *The PM indicator will light when the hour is set in the PM.*
3. Press the **Min** button to set the minutes.
4. Press the **Clock Set** button to finish setting the time.

Alarm and Sleep Timer

Setting the Alarm

1. With the unit OFF, press and hold the **AL 1** button until the display begins to blink, then release the button.
2. Press the **Hour** button to set the hour. *The PM indicator will light when the hour is set in the PM.*
3. Press the **Min** button to set the minutes.
4. Press the **AL 1** button repeatedly to select Radio or Buzzer.
5. Once the set alarm time is reached, the alarm will sound.
6. To set the other alarm, follow the above steps and use the **AL 2** button.

Disabling the Alarm

- Press the **AL 1** or **AL 2** button until the alarm indicator is no longer lit.

Snooze and Alarm Reset

After the alarm sounds:

- Press the **Snooze/Sleep** button to delay the alarm for 9 minutes.
- Press the **Power** button to turn the alarm off until the set alarm time is reached again.

Setting the Sleep Timer

1. Press the **Sleep** button repeatedly to set the sleep timer. *Timer duration is displayed in minutes.*
2. Once the set sleep time has expired the alarm will sound, then the unit automatically power off.

FM Radio

An FM wire antenna is built into the clock radio. To improve radio reception, adjust the position of the clock radio.

Tuning the Radio

1. Press the **Power** button to power the clock radio ON.
2. Press the **Tune +/-** buttons to adjust the radio to the desired frequency.
3. Press and hold the **Tune +/-** buttons to scan for available frequencies.
4. Press the **Volume +/-** buttons to adjust the volume.
5. Press the **Power** to turn the radio off.

Saving Radio Presets

1. Tune to the desired station.
2. Press and hold the **Memory** button. The display will begin flashing a memory preset. *Ex: "P01"*
3. Press the **Tune +/-** buttons to select the preset to be saved. *(P01 to P20).*
4. Press the **Memory** button to save that preset.
5. With the radio ON, press the **Memory and Skip buttons** to cycle through radio presets to cycle through radio presets.

International Support

To download this User's Guide in English, Spanish, or French, or to get answers to frequently asked questions, visit the support section at: www.gpx.com

Para descargar este Manual del Usuario en inglés, español y francés, o para obtener respuestas a preguntas frecuentes, visite la sección de apoyo en: www.gpx.com

Pour télécharger ce guide de l'utilisateur en anglais, espagnol ou français, ou pour obtenir des réponses à des questions fréquemment posées, consultez la rubrique d'assistance sur: www.gpx.com

For Warranty Information and the most up-to-date version of this User's Guide, go to www.gpx.com

Customer Service: 1-888-999-4215 | **Email Support:** prodinfo@dpiinc.com | **Email Parts:** partsinfo@dpiinc.com

Copyright © 2017 Digital Products International (DPI, Inc.) All other trademarks appearing herein are the property of their respective owners. Specifications are subject to change without notice.

