

Congratulations on your purchase of a high-quality Insignia product. Your new digital picture frame represents the state of the art in digital picture frame design and is designed for reliable and trouble-free sharing of your memories.

### Package contents

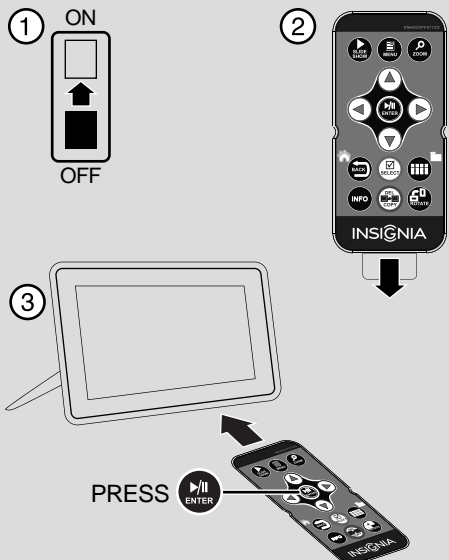
- Digital picture frame
- AC power adapter
- Remote control with battery (CR2025)
- Cleaning cloth
- USB cable
- User Guide
- Quick Setup Guide

### ATTENTION: DISABLE DEMO MODE!

Your frame comes with a store demo mode enabled by default.

#### To disable store mode and enable buttons:

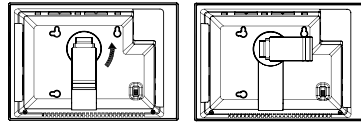
- 1 Turn the frame on.
- 2 Remove the remote control battery tab.
- 3 Point the remote control at the frame and press **ENTER** on the remote.



## 1 Set up your digital picture frame

### Setting up the frame

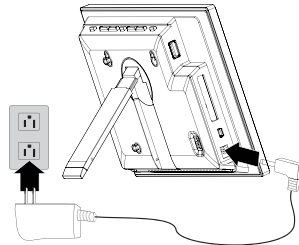
- 1 Pull out the stand to set the frame in landscape orientation.
- 2 Turn the stand counterclockwise 90° if you want to set the frame in portrait orientation.



- 3 Extend the stand from the back of the frame, then place the frame on a flat surface. Gently push or pull the stand to adjust the viewing angle.



- 4 Plug the AC power adapter into the frame's DC power connector and into an AC power outlet.



- 5 Slide the power switch to the **On** position. The frame will turn on and automatically start playing a slide show of the pictures stored in internal memory. This slide show is called Demo mode.

- 6 Remove the plastic tab that extends past the bottom edge of the remote control. This tab protects the battery. The remote control will not work until it is removed.

For more information on using the remote control, see your *User Guide*.



- 7 To turn off Demo mode, point the remote control at the front of the frame and press **ENTER**.

## 2 Start your slide show

### Viewing pictures on a memory card or USB memory device

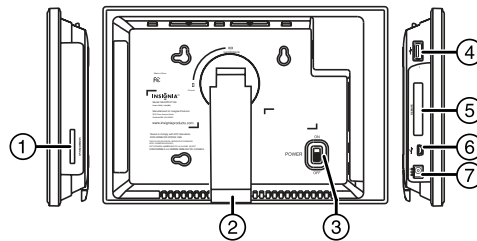
Insert a memory card or USB memory device into the memory card slot or the USB port. The frame will immediately begin loading a slide show of pictures from the memory card or USB memory device.

**Caution:** Memory cards fit into the card slots in only one direction. The label side of the card should face the screen. Do not force a memory card into a slot. The card should fit snugly when inserted correctly.

Some cards require an adapter to fit correctly. For more information on supported memory cards, see "Specifications" in the *User Guide*.

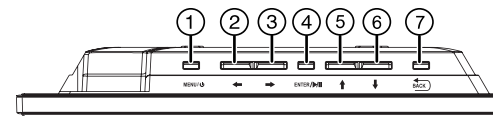
For more information about using your digital picture frame, see your *User Guide*.

### Sides and back



#	DESCRIPTION
1	Memory card slot (SD/SDHC/MMC/Memory Stick/xD) (Memory Stick Pro Duo/microSD require an adapter - not included)
2	Adjustable stand
3	Power On/Off switch
4	USB (type A) port
5	Remote control slot
6	USB (type Mini B) port
7	DC 5 V power connector

### Top



#	BUTTON	DESCRIPTION
1	MENU/⏏	Menu / Standby—Press to open the menu. To enter Standby mode, press and hold for two seconds.
2	←	Left arrow—Press to move the menu selection left or to display the previous picture.
3	→	Right arrow—Press to move the menu selection right or to display the next picture.
4	ENTER/▶▶	Enter/Play/Pause—Press to select menu items. During a slideshow, press to pause or resume.
5	↑	Up arrow—Press to navigate up.
6	↓	Down arrow—Press to navigate down.
7	BACK	Back button—Go back to the previous selection or screen.

### Six-month limited warranty

Visit [www.insigniaproducts.com](http://www.insigniaproducts.com) for details.

### Contact Insignia:

For customer service, call 1-877-467-4289  
[www.insigniaproducts.com](http://www.insigniaproducts.com)

© 2012 BBY Solutions, Inc., Inc. All rights reserved.  
INSIGNIA is a trademark of BBY Solutions, Inc. Registered in some countries. All other products and brand names are trademarks of their respective owners.