

INSIGNIA™

USER GUIDE

USB to RS-232 Serial Adapter

NS-PU99501/NS-PU99501-C



Before using your new product, please read these instructions to prevent any damage.

Contents

| | |
|--|----|
| Introduction | 2 |
| Important Safety Instructions..... | 2 |
| Features | 3 |
| Package contents | 3 |
| System Requirements | 3 |
| Installing the driver..... | 3 |
| Installing the driver for all versions of Windows..... | 7 |
| Installing the driver for Linux | 9 |
| Installing the driver for Mac OS X | 10 |
| Specifications | 16 |
| Legal notices..... | 16 |
| ONE-YEAR LIMITED WARRANTY | 19 |
| For Québec Customers Only | 23 |

Introduction

This USB to Serial Adapter Cable operates as a bridge between a USB port and a standard serial port. Plug the cable into a PC, router, or hub port, and it lets you connect a serial (RS-232) device with a DB9P male connector.



Important Safety Instructions

Always read the safety instructions carefully.

- Keep this User Guide for future reference.
- Keep this equipment away from humidity.
- Lay this equipment on a reliable flat surface before setting it up.
- If any of the following situations arise, get the equipment checked by a service technician:
 - The equipment has been exposed to moisture.
 - The equipment has been dropped and damaged.
 - The equipment has obvious sign of breakage.
 - The equipment is not working well or you cannot get it

Features

- Compliant with the USB 1.1 specification
- Plug & play compatible
- Debug UART for debug and code development
- USB device drivers available
- 115 kbps rate

Package contents

- USB 1.1 Serial Adapter Cable
- *User Guide*

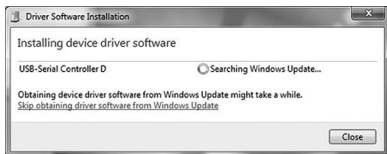
System Requirements

- IBM compatible Pentium-233 MHz processor or faster
- 64 MB RAM or more
- Available USB port
- OS support for all versions of Windows®, Mac OS X or later, and Linux

Installing the driver

Installing the driver for Windows 7 or Windows 8 via Windows Update

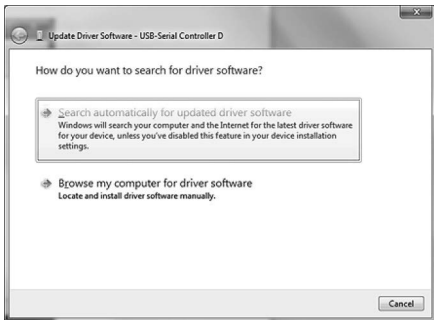
- 1 Make sure that your Internet connection is working.
- 2 Plug the NS-PU99501 serial adapter cable into a USB port.
- 3 Windows checks Windows Update and downloads and installs the driver automatically.



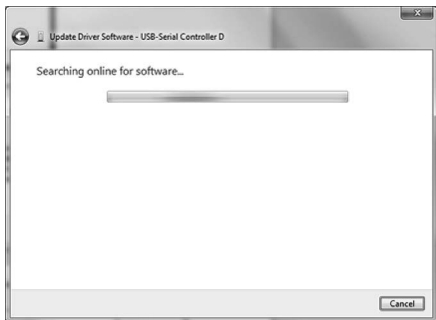
- 4 Windows then prompts you that the Prolific USB-to-Serial Comm Port (COM6) is installed and ready to use.



You can also right-click the **USB-Serial Controller** device in the **Device Manager**, then click **Update Driver**.



Windows searches for the correct software.



When Windows finds the software, it installs the software automatically.



- 5 Connect the USB end to an available USB port on your PC, then connect the RS-232 end of the cable to your serial device.

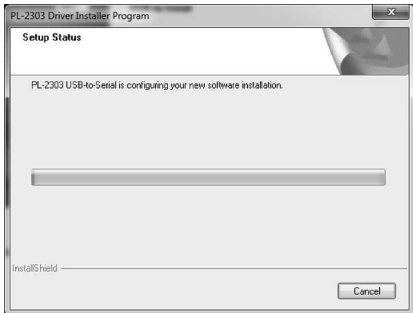
Installing the driver for all versions of Windows

- 1 Make sure that your internet connection is working, then go to www.insigniaproducts.com.
- 2 Click **Support & Service**, then enter your model number (NS-PU99501) in the **Search** field and press **Enter**. The product page opens.

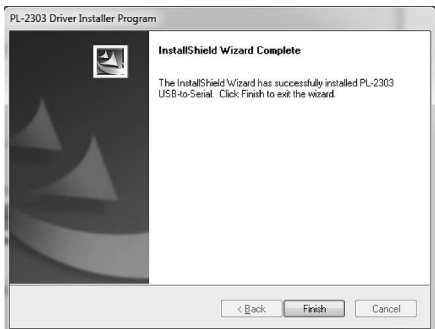
- 3 Click **Support/Downloads. Under Drivers, Firmware and Software, click Driver - PC English.** The driver will download.

If your computer doesn't have an Internet connection you can download the driver to a USB flash drive using another computer and then run the driver installation wizard from the flash drive.

- 4 After downloading the driver, double-click **PL2303_Prolific_DriverInstaller_vX.X.X.exe**, or whatever version of the driver you just downloaded (the version numbers are shown as X.X.X in these instructions). The installation wizard begins.
- 5 Click **Next.** The driver installation begins. You can click the **Cancel** button at any time to stop the installation.



- When the driver installation is complete, the following screen opens. Click **Finish** to close the wizard and automatically restart your computer.



- Connect the RS-232 connector to your serial device. The device is now available for use.

Installing the driver for Linux

No drivers are required for the Linux Operating System.

Installing the driver for Mac OS X

- 1 Make sure that your internet connection is working, then go to www.insigniaproducts.com.
- 2 Click **Support & Service**, then enter your model number (NS-PU99501) in the **Search** field and press **Enter**. The product page opens.
- 3 Click **Support/Downloads. Under Drivers, Firmware and Software**, click **Driver - Mac English**. The driver will download.

If your computer doesn't have an Internet connection you can download the driver to a USB flash drive using another computer and then run the driver installation wizard from the flash drive.

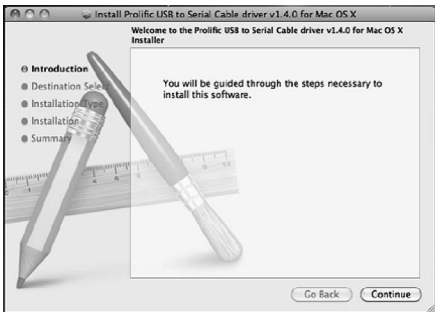
- 4 After downloading the driver, unzip the file **md_PL2303_MacOSX10_6_dmg_vX.X.X**, then click **PL2303_X.X.X.dmg**, or whatever version of the driver you just downloaded.

Note: These screenshots show specific driver version numbers which may not be current. The version numbers are shown as X.X.X in these instructions.

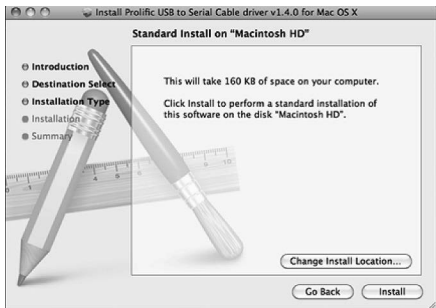
5 Click the **PL2303_X.X.X.dmg** icon.



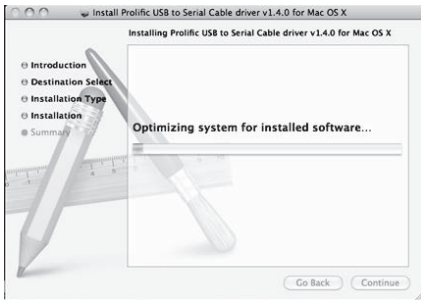
The *Install Prolific USB to Serial Cable Driver v1.4.0 for Mac OS X* screen opens.



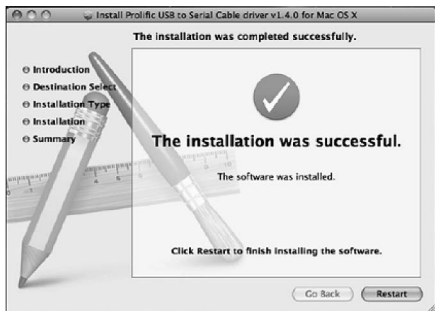
- 6 Click **Continue** to install the driver, then follow the instructions to complete the installation.



- 7 Click **Install** to continue with the installation. You can also click **Change Install Location** to install the software in a different location.

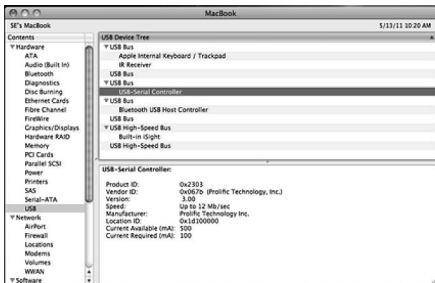


- 8 When the installation is complete, the following screen opens.



- 9 Close all programs, then click **Restart** to reboot your computer.

- 10** Connect the USB end of the NS-PU99501 cable adapter into an available USB port on your Mac. Click the **USB Hardware Inside System Profiler**. The following screen opens.



- 11** Look for “USB-Serial Controller,” “USB-Serial Controller D,” or “IEEE-1284 Controller” to determine if your Mac has detected your new adapter. Mac OS may also open a dialog box indicating that the new network interface has been detected.



Specifications

| | |
|--------------------|--|
| Product | USB 1.1 Serial Adapter |
| Data transfer rate | 115 kbps |
| Function | USB 1.1 Serial Adapter - Operates as a bridge between a USB port and a standard RS-232 port. |

Legal notices

FCC Statement

This device complies with Part 15 of the FCC Rules. Operation is subject to the following two conditions:

(1) this device may not cause harmful interference, and (2) this device must accept any interference received, including interference that may cause undesired operation.

This equipment has been tested and found to comply with the limits for a Class B digital device, pursuant to Part 15 of the FCC Rules. These limits are designed to provide reasonable protection against harmful interference in a residential installation. This equipment generates, uses and can radiate radio frequency energy and, if not installed and used in accordance with the instructions, may cause harmful interference to radio communications. However, there is no guarantee that interference will not occur in a particular installation.

If this equipment does cause harmful interference to radio or television reception, which can be determined by turning the equipment off and on, the user is encouraged to try to correct the interference by one or more of the following measure

- Reorient or relocate the receiving antenna
- Increase the separation between the equipment and receiver.
- Connect the equipment into an outlet on a circuit different from that to which the receiver is connected.
- Consult the dealer or an experienced radio/TV technician for help

Warning

Changes or modifications not expressly approved by the party responsible for compliance could void the user's authority to operate the equipment.

Cables

Connections to this device must be made with shielded cables with metallic RF/EMI connector hoods to maintain compliance with FCC Rules and Regulations

Canadian Notice

IC Notice - Clause 8, ICES-003 Issue 5:

"CAN ICES-3 B/NMB-3 B"

For service and support call 1-877-467-4289

ONE-YEAR LIMITED WARRANTY

Best Buy, or its Authorized Partner of Insignia branded products, warrants to you, the original purchaser of this new Insignia branded product ("Product"), that the Product shall be free of defects in the original manufacture of the material or workmanship for a period of one (1) year from the date of your purchase of the Product or the date of delivery (if later than the date of purchase) ("Warranty Period").

For this warranty to apply, your Product must be (i) purchased in the United States or Canada from a Best Buy branded retail store, online at www.bestbuy.com or www.bestbuy.ca, or from Best Buy's Authorized Partner, and (ii) packaged or sold with this warranty statement.

The term "Best Buy", as used in this warranty, refers to Best Buy branded retail stores, www.bestbuy.com, www.bestbuy.ca, and Best Buy's Authorized Partner.

Because Insignia cannot control the quality of products sold by unauthorized sellers, this warranty applies only to Products that were purchased from Best Buy or an Insignia Authorized Partner, unless otherwise prohibited by law. Insignia reserves the right to reject warranty claims for Products purchased from unauthorized sellers, including unauthorized websites.

REPAIR OR REPLACEMENT, AS PROVIDED UNDER THIS WARRANTY, IS YOUR EXCLUSIVE REMEDY FOR BREACH OF WARRANTY. INSIGNIA SHALL NOT BE LIABLE FOR ANY INCIDENTAL OR CONSEQUENTIAL DAMAGES FOR THE BREACH OF ANY EXPRESSED OR IMPLIED WARRANTY ON THIS PRODUCT, INCLUDING, BUT NOT LIMITED TO, LOST DATA, LOSS OF USE OF YOUR PRODUCT, LOST BUSINESS, OR LOST PROFITS. INSIGNIA PRODUCTS MAKES NO OTHER EXPRESS WARRANTIES WITH RESPECT TO THE PRODUCT. ALL EXPRESSED AND IMPLIED WARRANTIES FOR THE PRODUCT, INCLUDING BUT NOT LIMITED TO ANY IMPLIED WARRANTIES OF

AND CONDITIONS OF MERCHANTABILITY AND FITNESS FOR A PARTICULAR PURPOSE, ARE LIMITED IN DURATION TO THE WARRANTY PERIOD SET FORTH ABOVE AND NO WARRANTIES, WHETHER EXPRESSED OR IMPLIED, WILL APPLY AFTER THE WARRANTY PERIOD. SOME STATES, PROVINCES, AND JURISDICTIONS DO NOT ALLOW LIMITATIONS ON (i) HOW LONG AN IMPLIED WARRANTY LASTS, (ii) EXCLUSION OR LIMITATION OF INCIDENTAL OR CONSEQUENTIAL DAMAGES, or (iii) LIMITATION OF INCIDENTAL OR CONSEQUENTIAL DAMAGES, SO THE ABOVE LIMITATIONS OR EXCLUSIONS MAY NOT APPLY TO YOU. THIS WARRANTY GIVES YOU SPECIFIC LEGAL RIGHTS, AND YOU MAY ALSO HAVE OTHER RIGHTS, WHICH VARY FROM STATE TO STATE OR PROVINCE TO PROVINCE.

How long does the coverage last?

The Warranty Period lasts for 1 year (365 days) from the date you purchased the Product or the date of delivery (if later than the date of purchase). Your purchase date is printed on the receipt you received with the Product. In the event that Authorized Partner ceases to sell the covered Insignia branded product, this warranty shall terminate for that product and there shall be no repair or replacement of the Product.

What does this warranty cover?

During the Warranty Period, if the original manufacture of the material or workmanship of the Product is determined to be defective by an authorized Insignia repair center or store personnel, Insignia will (at its sole option): (1) repair the Product with new or rebuilt parts; or (2) replace the Product at no charge with new or rebuilt comparable products or parts. Products and parts replaced under this warranty become the property of Insignia and are not returned to you. If service of Products or parts are required after the Warranty Period expires, you must pay all

labor and parts charges. This warranty lasts as long as you own your Insignia Product during the Warranty Period. Warranty coverage terminates if you sell or otherwise transfer the Product.

How to obtain warranty service?

If you purchased the Product at a Best Buy retail store location or from a Best Buy online website (www.bestbuy.com or www.bestbuy.ca), please take your original receipt and the Product to any Best Buy store. Make sure that you place the Product in its original packaging or packaging that provides the same amount of protection as the original packaging. If you purchased your Product from an Authorized Partner, call Insignia at 1-877-467-4289.

To obtain warranty service, in the United States and Canada call 1-877-467-4289. Call agents may diagnose and correct the issue over the phone.

If you purchased the Product from an Authorized Partner other than Best Buy, please call 1-888-BESTBUY in the United States or 1-866-BESTBUY in Canada. You will be asked to provide proof of purchase and to return your Product to Best Buy. Make sure that you put the Product in its original packaging or packaging that provides the same amount of protection as the original packaging.

Where is the warranty valid?

This warranty is valid only in the United States and Canada to the original purchaser of the product from an Authorized Partner, in the country where the original purchase was made.

What does the warranty not cover?

- Food, beverage, and/or medicine loss/spoilage.
- Damage to other products caused by a power surge or other similar issue while connected to the Product.
- Customer instruction/education.
- Installation.
- Set up adjustments.
- Cosmetic damage.
- Damage due to weather, lightning, and other acts of God,

such as power surges.

- Accidental damage.
- Misuse.
- Abuse.
- Negligence.
- Commercial purposes/use, including but not limited to use in a place of business or in communal areas of a multiple dwelling condominium or apartment complex, or otherwise used in a place of other than a private home.
- Modification of any part of the Product, including the antenna.
- Display panel damaged by static (non-moving) images applied for lengthy periods (burn-in).
- Damage due to incorrect operation or maintenance.
- Connection to an incorrect voltage or power supply.
- Damage due to attempted repair by any person not authorized by Insignia to service the Product.
- Products sold "as is" or "with all faults".
- Consumables, including but not limited to batteries (i.e. AA, AAA, C etc.).
- Products where the factory applied serial number has been altered or removed.
- Loss or Theft of this product or any part of the product.
- Display panels containing up to three (3) pixel failures (dots that are dark or incorrectly illuminated) grouped in an area smaller than one tenth (1/10) of the display size or up to five (5) pixel failures throughout the display. (Pixel based displays may contain a limited number of pixels that may not function normally.).
- Failures or Damage caused by any contact including but not limited to liquids, gels or pastes.

1-877-467-4289 | www.insigniaproducts.com

INSIGNIA is a trademark of Best Buy and its affiliated companies.

Distributed by Best Buy Purchasing, LLC

7601 Penn Ave South, Richfield, MN 55423 U.S.A

©2025 Best Buy. All rights reserved.

For Québec Customers Only

Availability Guarantee

Notice for Section 39 of the *Consumer Protection Act* Regarding the Availability Guarantee of Replacement Parts, Repair Services, and Maintenance Information

Please be advised that Best Buy Canada Ltd. ("Best Buy"), including its affiliated entities, does not guarantee, within the meaning of Section 39 of the *Consumer Protection Act* and the applicable regulations, the availability of replacement parts, repair services, or maintenance or repair information relating to products sold, manufactured, imported, advertised, or sold by Best Buy or under its Insignia brand, Best Buy Essentials, Rocketfish, or other brands sold or manufactured by Best Buy.

This Notice does not affect Best Buy's One-Year Limited Warranty for Insignia Products.

Please visit www.bestbuy.ca/garantie-disponibilite for additional information.



INSIGNIA™

www.insigniaproducts.com

1-877-467-4289 (U.S. and Canada)



INSIGNIA is a trademark of Best Buy and its affiliated companies.

Distributed by Best Buy Purchasing, LLC

Richfield, MN 55423

©2025 Best Buy. All rights reserved.

V3 ENGLISH
25-0986