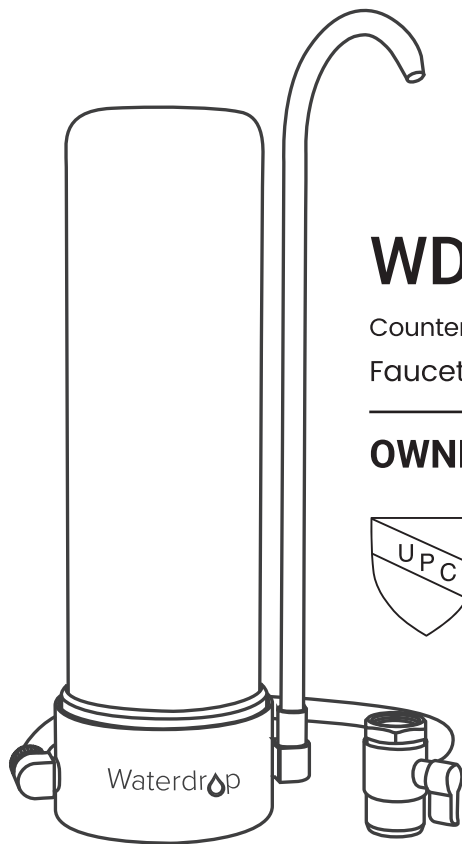


460mm

Waterdrop



WD-CTF-01

Countertop Stainless-Steel
Faucet Filtration System

OWNER'S MANUAL



About the System

Thanks for choosing the Countertop Stainless-Steel Faucet Water Filtration System. The product adopts activated carbon block to provide you with healthy water and release beneficial minerals. Its multistage filtration can reduce harmful substances such as chlorine, lead, fluoride, etc. It can also inhibit the bacteria from building up. The system is made of food-grade 304 stainless steel to ensure quality and durability, and the precise design makes it easy to install. The system doesn't need a power supply and it produces no waste water. You can get both tap water and filtered water by a switch.

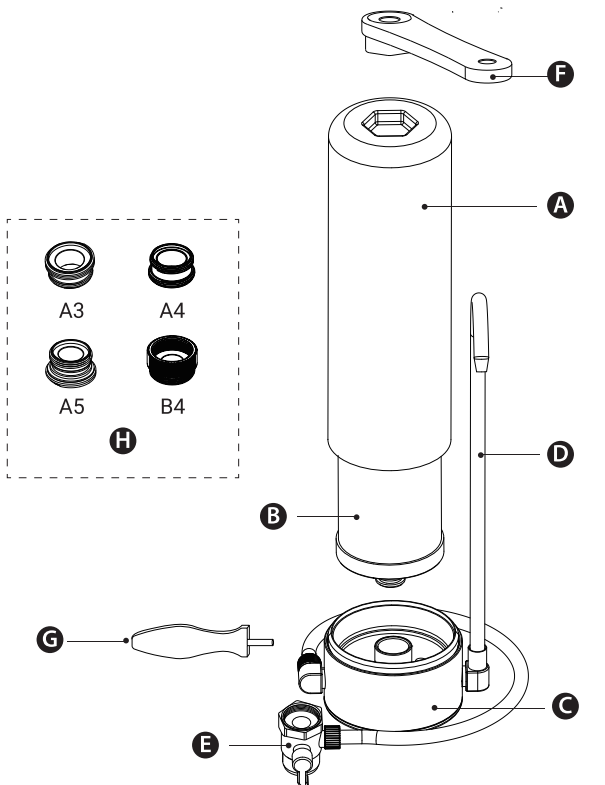
System Specifications

To achieve optimal performance, it is recommended to use the system within the system specifications.

System Model No.	WD-CTF-01
Replacement Model No.	WD-CFF-01
Rated Capacity	12 months or 8,000 gallons
Rated Flow	1.0 gpm/3.8 lpm (tested under 60 psi)
Operating Temperature	41-100°F/5-38°C
Operating Working Pressure	15-100 psi/100-689 kPa

NOTE: Do not use with water that is microbiologically unsafe or of unknown quality without adequate disinfection before or after the system.

Part List



- (A) Filter housing
(B) Filter
(C) Stainless-steel base
(D) Spout
(E) Outlet valve
(F) Wrench
(G) Assistant wrench
(H) A3 adapter (15/16"-27")
A4 adapter(13/16")
A5 adapter (M18.5)
B4 adapter (M18.5)

Installation Instructions

- Take out the system and accessories.
- Remove the faucet's aerator and choose the right adapter to match your faucet threading. Make sure the washer between the faucet and the system is installed firmly.

How to Choose the Right Adapter.

- (1). For external threaded faucets, please try to connect the Outlet valve(E) to the faucets. If not fit, select B4 adapter. Use a coin to connect the B4 adapter to the faucet. Then connect the Outlet valve (E) of the system to the adapter. If the seal ring of adapter is loose, please install it firmly.
- (2). For internal threaded faucets, select the appropriate adapter (A3/A4/A5) according to the thread size. Use a coin to connect the adapter to the faucet. Then connect the Outlet valve (E) of the system to the adapter. If the seal ring of the adapter is loose, please install it firmly. If you still can't connect it properly, please contact customer service to get help.

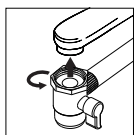


Figure 1.1

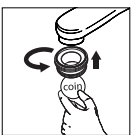
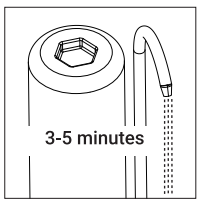
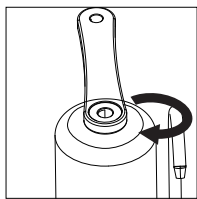


Figure 1.2



Figure 1.3

- Tighten the filter housing (A) with a wrench (F). **[Figure 1.1]**
 - Put the water system in its proper position. Switch the lever to the level position and run water to the system slightly. Flush it for 3-5 minutes during the first use. **[Figure 1.2]**
- NOTE:** If you find it difficult to unscrew and tighten the housing, you can use the assistant wrench (G) to make the base steady. **(Figure 1.3)**



TIPS: If there is water leakage at the connecting position between the faucet and the system, it is recommended to use the wrench to assist in tightening the nut on (E), or use the Teflon tape inside the instruction package to avoid leakage.

NOTE: There may be a small amount of black water during the first use. This is a normal phenomenon because of the activated carbon. Feel free to use the water after it becomes clear.

Use Method

- Switch the lever to the downward direction to get tap water. **[Figure 1.4]**
- Switch the lever to the level direction to get pure water. **[Figure 1.5]**

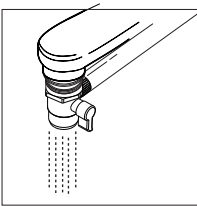


Figure 1.4

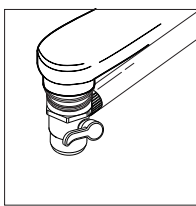
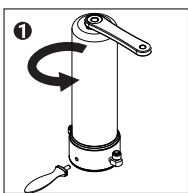


Figure 1.5

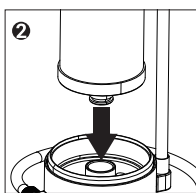
- NOTE:**
- Before the first use, run water for 3-5 minutes in the "pure water" position. Do not run water at a temperature higher than 100°F/38°C. There may be a small amount of black water and the sound of water pushing air out of the filter during the first use. This is a normal phenomenon because of the active carbon. Feel free to use the water after it becomes clear.
 - Check for water leakage. In the event of leakage, refer to the FAQ or contact customer service.

Filter Replacement

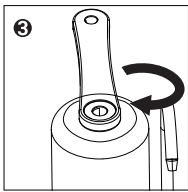
For optimum performance, it is highly recommended that you use a genuine Waterdrop faucet replacement water filter. To keep the water fresh, it is also advisable to change your filter every 12 months or 8,000 gallons, whichever comes first. This will vary based on your water usage and water quality.



- Place the system in the water sink, and use the wrench (F) to unscrew the filter housing (A) from the top (there will be water between the filter housing and the base).



- Remove the expired filter from the system and insert the new filter into the base (C). Make sure the sealing ring is installed firmly.



- Screw the filter housing (A) into the base (C) by hand and tighten it with the wrench (F).

NOTE: If you find it difficult to unscrew and tighten the housing, you can use the assistant wrench (G) to make the base steady.

Warnings

- Do not use with water above 100°F/38°C.
- Flush the filter for 3-5 minutes before the first use or after filter replacement.
- If the system has not been used for over 24 hours, run water for 1 minute before use.
- Do not touch the filtered water outlet of the system in order to prevent bacteria from building up.
- Protect the filter system from freezing temperatures, frost, snow, sleet, and ice.
- Clean the exterior of the system with a soft cloth to maintain its appearance and service life.
- Replace the filter every 12 months or 8,000 gallons for best filtration performance.

Frequently Asked Questions

- Q: Why does the filtered water taste weird?**
A: The filter is not installed appropriately, or it should be replaced. Please reinstall it in a correct way. If there is still bad taste, please replace the filter.
- Q: Why isn't the TDS value reduced after filtration?**
A: TDS stands for total dissolved solids. It is composed of inorganic salts and a small amount of organic matter. This system cannot reduce the TDS value because it removes harmful substances while keeping beneficial trace elements, which can increase the TDS value.
- Q: Why does water leak between the outlet valve and the faucet?**
A: Remove the filtration system from the faucet and check on whether the sealing gasket at the connection is placed correctly. Ensure that the thread between the faucet and the filtration system is screwed in firmly so that the sealing gasket can work.
- Q: Why is the water leaking or dripping?**
A: Check whether the selected adapter is correct or whether the adapter sealing ring and the base sealing ring are installed firmly. Flush the filter for 3-5 minutes to activate it, and then there will be no leaks or drips.

Limited Warranty

The Waterdrop Activated Carbon Block Faucet Filtration System (Model No.: WD-CTF-01) offers 1-year warranty, which covers defects in materials and workmanship from original date of purchase. If the products proves to be defective within 1 year from the date of purchase, please call our technical support hotline.

During the warranty period, we will replace or repair any part which is deemed to be defective, if product has not been subjected to tampering, alteration or improper use after delivery, and has not been repaired by the manufacturer. The product is not warranted against misuse, use in abnormal operation temperature conditions, conditions outside listed operating parameter, sue in commercial operations or any other manner outside the "System Specifications" set forth in the owner's manual. Our obligation does not include the cost of transportation. We are not responsible for damage in transit, and claims for such damage should be presented to the carrier by the customer.

NOTE: It does NOT apply to any filter cartridge, which has a life expectancy that varies based on incoming water quality.

Performance Data Sheet



System Tested and Certified by IAPMO R&T against NSF/ANSI 42 for the reduction of the claims specified on the Performance Data Sheet, and NSF/ANSI 372 (≤0.25% lead).

Substance reduction:
The system has been tested and certified by the IAPMO R&T International according to NSF/ANSI Standard 42 for the reduction of the substances listed below. The concentration of the indicated substances in water entering the system was reduced to a concentration less than or equal to the permissible limit for the water leaving the system, as specified by NSF/ANSI Standard 42. While testing was performed under standard laboratory conditions, actual performance may vary.

NSF/ANSI Standard 42 – Aesthetic Effects				
Substance	Influent Challenge Concentration	Percent Reduction	Product Water Concentration	U.S. EPA Level/NSF Maximum Permissible Product Water Concentration
Chlorine Taste and Odor	2.0 mg/L	97.63%	ND	≥50%

⚠
Do not use with water that is microbiologically unsafe or of unknown water quality without adequate disinfection before or after the system.

Manufacturer Technical Support
Tel: 1-888-352-3558 (U.S.)
E-mail: service@waterdropfilter.com

Made in China V043
Qingdao Ecopure Filter Co., Ltd.



155mm