



AHA's innovative IFPD

Distributed by Hitrons Solutions Inc.
Address: 165 Carver Avenue Westwood, NJ 07675
Customer Support Email: info@hitronsinc.com
Customer Support Phone Number: 1-888-760-3003
www.hitronsinc.com
www.kproduct4u.com



Contents

- Powerful, high-performance memory
- Dual Office
- Gallery mode when saving power
- High sensitivity IR touch sensor
- OTA (Over The Air)
- The world's first drawer-type pen tray
- 2.1 channel high quality & powerful speakers
- Easy & convenient multi-touch software
- Supports various interfaces
- Mirroring
- File transfer via QR code
- Multi-tasking on Android
- External input screen split
- Specifications



Android 14.0 Version

Google EDLA certified
(Enterprise Device License Agreement)

AHA's 7000 series IFPD can selectively install various Google apps. It also delivers new levels of speed, security, and reliability. Installed software, apps and platform services are designed to enable continuous improvement and other security-related patches.



Dual Office

Equipped with Polaris Office, which is compatible with Microsoft Office Files

Powerful, high-performance memory

128G memory

Increasing memory capacity will improve system performance.
Equipped with 128GB memory, large data operations are supported without any problems.

Google EDLA

Enterprise Device License Agreement

CPU Octa-core	Cortex A72×4 + A53×4
GPU	ARM Mali G52 MC3



14
Android

Dual Office



Polaris Office
Mobile DeX



Polaris Office
Enterprise

When opening and working with MS office files on the Android screen, it provides the same experience as opening and working on a PC.



Features



Easy & familiar usage

The same ribbon menu and shortcut key switching are provided, so user can use them right away without any additional learning



Keyboard and mouse support

Powerful desktop PC level editing features and quick document editing with keyboard and mouse



Working with all formats

Supports various file formats such as MS Office, HWP and PDF(read-only), etc



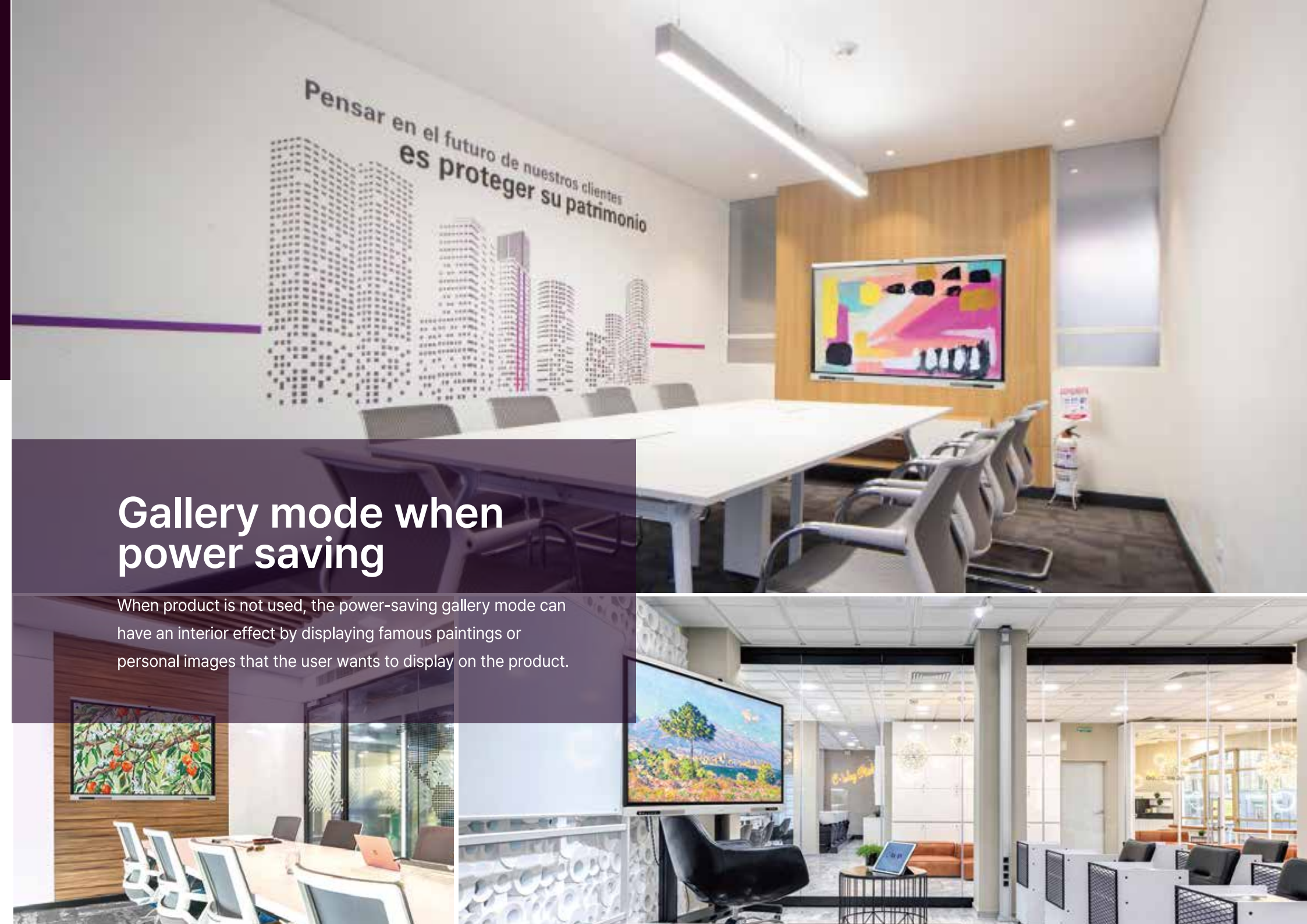
Use of writing

Ability to edit and save written contents



Gallery mode when power saving

When product is not used, the power-saving gallery mode can have an interior effect by displaying famous paintings or personal images that the user wants to display on the product.



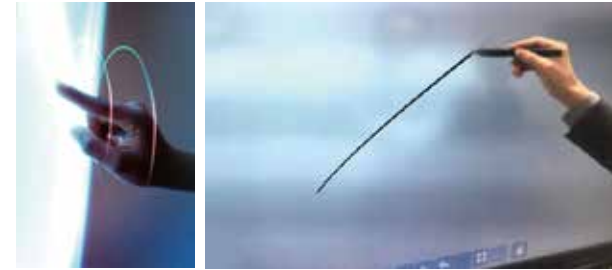
High sensitivity IR touch sensor

The height between the glass and the touch sensor is less than 1mm, allowing for extremely accurate, fast and precise writing.

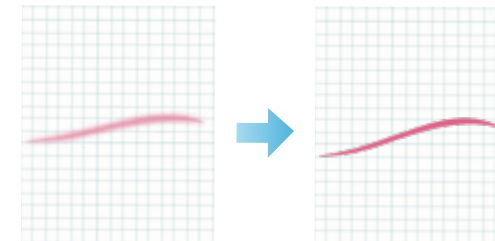
 50-points multi-touch



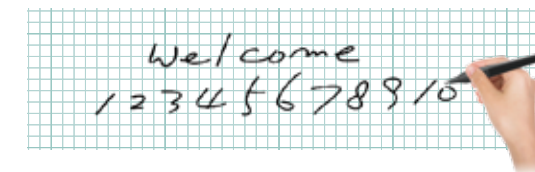
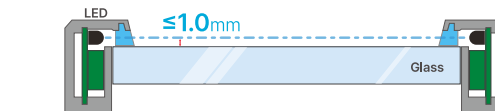
 Ultra-fast touch response speed of less than 2.0ms



 $\pm 1\text{mm}$ touch accuracy

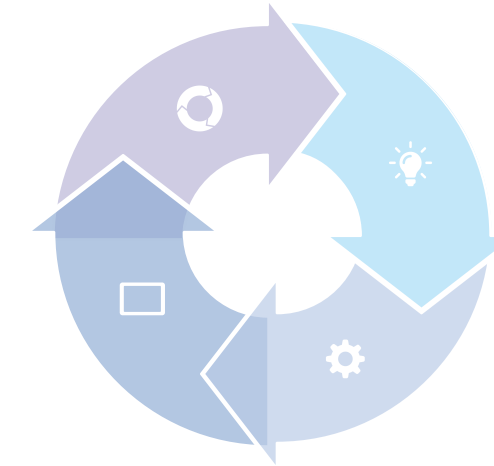


 Height between glass and touch sensor is less than 1.5 mm



OTA (Over The Air)

By OTA Service App, it supports remote update using the network.



1 OTA update
(available when network is connected)



2 Run OTA app



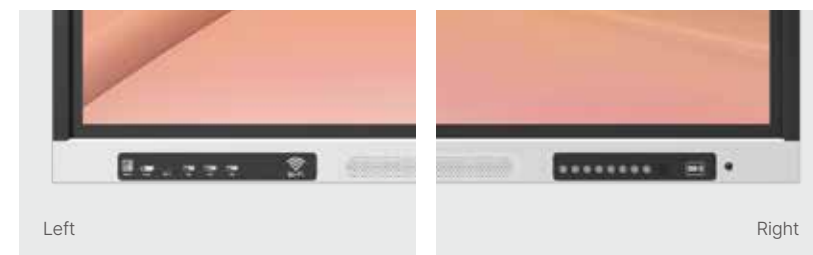
3 Update completed





The world's first drawer-type pen tray

By applying the pen tray in the form of a drawer to the front of the product, it is easy to store pens, erasers, remote controller, without compromising the sophisticated design of product



2.1 channel high quality & powerful speakers

By adding a subwoofer (20W) with enhanced bass to 2 × 20W high-quality speakers, user can enjoy a more magnificent and rich sound quality

When teacher lectures using enhanced sound such as woofer of IFPD, all students in the classroom can hear teacher's voice clearly. Therefore, even students sitting in the back of the classroom can hear the lecture clearly and participate in the class.



Easy & convenient multi-touch software

The built-in multi-touch software on Android allows users to conduct classes and meetings more easily and conveniently.



- Editing upgrade
Object size adjustment and infinite writing
- Page function upgrade
Save more pages
- Wallpaper upgrade
Adding basic background diversity
- Email & lecture writing
Contents sharing

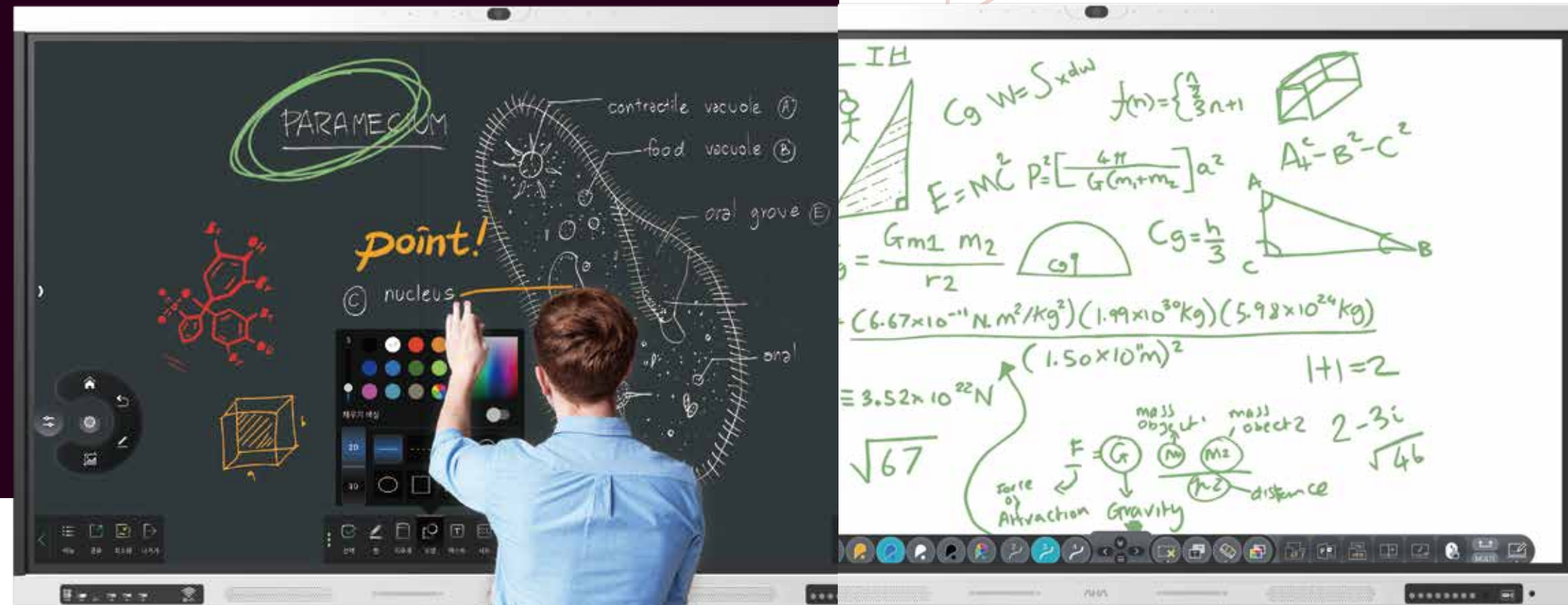


- Enhanced writing function
Pen, eraser, etc.
- Open / Save various files
Read and write support
- Annotation function
that allows writing on any input source screen
- Drawing various shapes
2D / 3D shapes



Internet search as soon as writing

It provides a convenient function that allows IFPD to immediately recognize user's handwriting information and then search the Internet without using a separate computer keyboard.



- PPT Tools**
- Pen
 - Slide control
 - Pointer
 - Eraser
 - Slide show
 - Highlighter
 - Arrow pointer



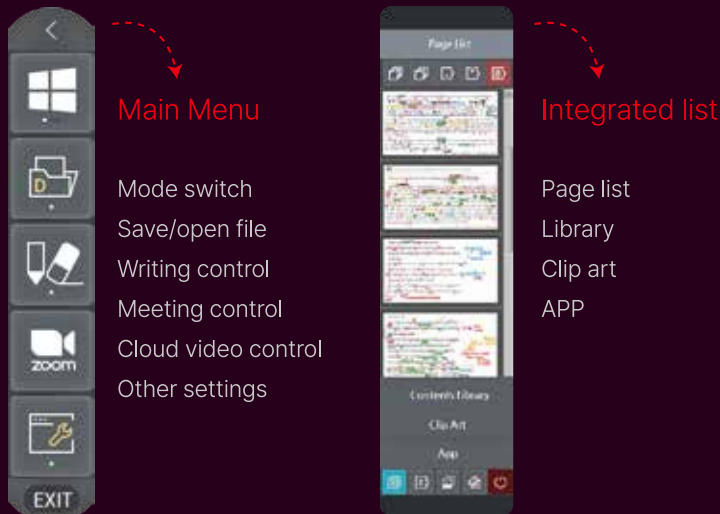
- Writing Palette**
- Pen type / line thickness
 - Line color/eraser
 - Line type
 - Object selection mode

- Multi-touch software**
- Home button, mode switch support
 - Pen type/pen color/line thickness/eraser function
 - Important features of multi-touch software
 - Shortcuts to important features of interactive solutions
 - Swap when long clicking on the dot icon



Edupen PRO Multi-touch Software (Optional)

Provides innovative educational tools for both Windows and Android OS



- Main Menu**
- Mode switch
 - Save/open file
 - Writing control
 - Meeting control
 - Cloud video control
 - Other settings
- Integrated list**
- Page list
 - Library
 - Clip art
 - APP

Supports various interfaces

It provides various interfaces such as USB-C, HDMI, DP and the LAN port allow user to easily connect various devices to IFPD.



Side

USB-A(3.0) x 1(Only Android), USB-A(3.0) x 1, USB-A(2.0) x 1, USB-B(3.0) x 1(For Touch), USB-C(DP Alt Mode) IN x 1, DP(1.2) x 1, HDMI(2.0) x 2, RS232C(D-SUB9) x 1, SD Card x 1 (Internal)

Front

USB-B(3.0) x 1, HDMI 2.0 x 1, USB-C x 1, USB-A(3.0) x 3



Power control by NFC

The NFC (near field communication) function installed to improve product management and security.

Bottom

VGA In x 1, VGA Audio(3.5mm) In x1, LAN IN/OUT(1G) x 2, HDMI(2.0) OUT x 1, S/PDIF x 1, LINE OUT(3.5mm) x 1, MIC IN(3.5mm) x 1

Front



Power On/Off, Home, Back, Source, Freeze, Capture, Volume Down, Volume Up

Mirroring

The screen of IFPD can be wirelessly mirrored to various OS based devices, and conversely, up to 16 devices can be mirrored to the IFPD at the same time. User can control it wirelessly by touching devices on the IFPD screen.



Multimedia sharing: screen mirroring allows user to transfer multimedia contents such as photos, videos, music from your smartphone or tablet to the big screen. This is useful for sharing contents with family or friends, or enjoying movies or games on a larger screen.



File transfer via QR code

By sending the file saved on the mobile device to the IFPD through a QR code, the file can be freely used on the IFPD for any desired purpose. (Only available on the same network)



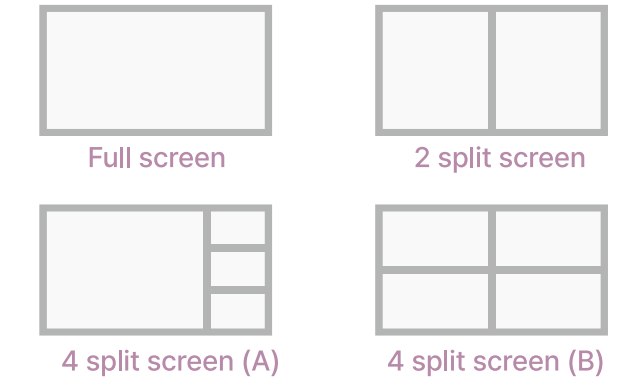
- 1 Scan QR code through File Transfer app
- 2 Transfer the desired file to the IFPD

Multi-tasking on Android

With a more powerful CPU and memory, it supports multitasking by displaying multiple types of apps on one screen at the same time on Android without interruption or delay.

External input screen split

User can experience a variety of visual effects by displaying the connected external source screen in up to 4 divisions and displaying the screen simultaneously to check multiple screen information at the same time.



- User can connect up to 4 devices at the same time to share materials and conduct classes and meetings





MDM (Mobile Device Management) - Optional

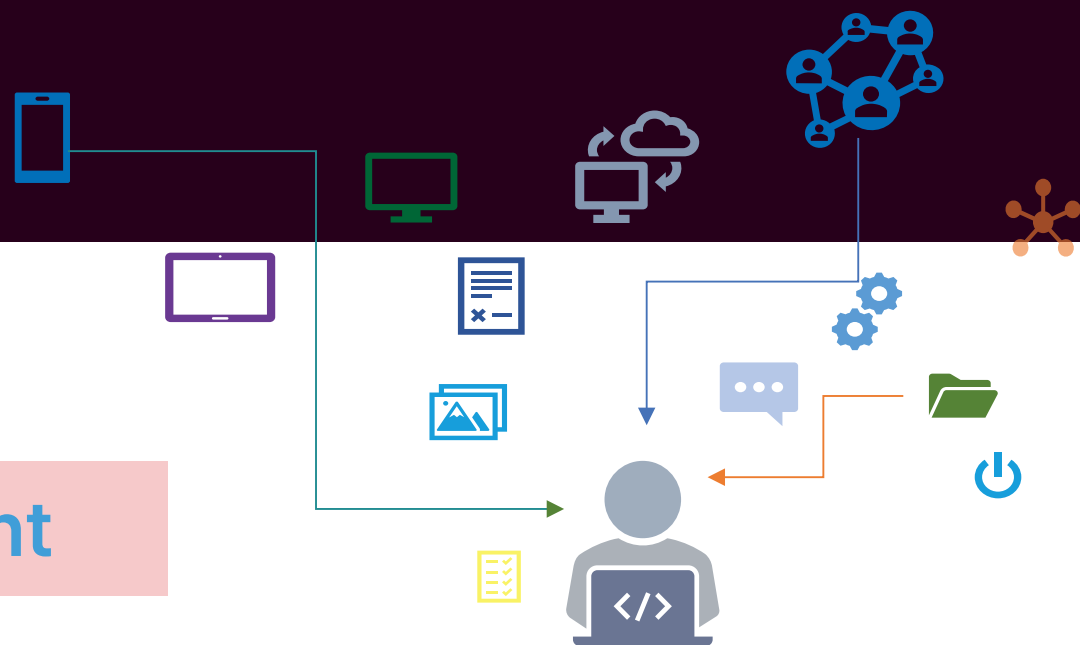
Remotely and collectively manage multiple IFPD (Interactive Flat Panel Display), tablet and other devices in school.

Check device usage status and manage operation, such as turning power on/off, sending text, images, and videos, or installing/locking apps.

Mobile

Device

Management



Moving Stand - Optional

Major features

- Color: Matt Silver Grey
- Screen size: 55" ~ 86"
- Load Capacity: 150kg
- VESA Max. size: 1000mm*600mm
- Final size after assembly (LxWxH): 1190*635*1635mm
- Max. Load Capacity: approx. 150kg
- For IFPD size to move: 55" ~ 86"



OPS - Optional

Major features

- Processor: i5 1240H 3.3GHz turbo frequency 4.4GHz 16W 10 cores 12 threads 12MB Cache
- Memory: DDR4 8GB (3200MHz)
- Display
- Front output: DP 7680 x 4320 8K60Hz HDMI2.0
- JAE: HDMI2.0 3840 x 2160 4K60Hz
- Graphics: Intel Iris® Xe Graphics eligible
- Hard disk: SSD 256GB

* OPS OS(Windows OS) can be installed optionally.



Hybrid 7000

Specifications

			Hybrid 7000 Series MAINSTREAM		
			65"	75"	86"
	Model Name		AHA-HD70-65	AHA-HD70-75	AHA-HD70-86
Display	Resolution	3840(H) X 2160(V)			
	Refreshing Frequency	60Hz			
	Display Color	1.07B			
	NTSC	85%			
	Contrast Ratio (typ)	1200:1(IPS)	5000:1(VA)	1200:1(IPS)	
	Viewing Angle	178° (H/V)			
	Back light Unit	DLED			
	Local Dimming PanelScheme		-		
	Brightness with glass (center)	≥400 cd/m²			
	LifeTime	≥50000 Hours			
System	System Version	Android 14 & EDLA			
	Main Chip	RK3576			
	CPU	Octa-core : Cortex A72*4 (MAX : 2.3GHz)+Cortex A53*4 (MAX : 2.2GHz)			
	GPU	ARM Mali G52 MC3 GPU (MAX : 950MHz)			
	RAM	16GB			
	ROM	128GB			
	UI&UX	4K			
Touch	Sensing Type	Infrared touch technology			
	System	Windows 11 / Mac 10.10,...10.16 /Linux/ Chrome			
	Touch Tool	Hand or other Solid Object (Pen tip> <!=>2.0mm)			
	Accuracy	±1mm (over 90% Area)			
	Touch point	50 Points (Windows) 50Points (Android) 1 Point (MAC, Linux, Chrome Support Single Point)			
	Minimum Object Size (Passive pen)	2mm			
	WritingHeight	s2ms			
	Interpolation Resolution	32768(W)x32768(D)			
	Report Rate	500Hz			
	Response Time	s2ms			
	Palm Rejection	Yes			
	Touch Height	<1.5 mm (over 90% Area)			
Audio	Speaker	2x20W			
	Speaker Type	Built-in Speaker, front facing			
	Subwoofer	20W			
	MIC	Array*8			
Camera	Detachable Camera (4K)	Yes			
Power	Power Requirements	100-240V~50/60Hz			
	Standby Power	<0.5W			
1/0 (Front)	HDMI (2.0)	x1			
	USB-A(3.0)	x3			
	USB-8 (3.0) For Touch	x1			
	USB-C	x1 (Up to PD65W_AudioNideo/USB3.0/Touch/Mic/Camera/LAN Network Sharing)			

			Hybrid 7000 Series MAINSTREAM		
			65"	75"	86"
	Model Name		AHA-HD70-65	AHA-HD70-75	AHA-HD70-86
1/0 (Bottom)	VGAIN	x1			
	VGA Audio IN (3.5mm)	x1			
	LAN(RJ45) IN/OUT (1G)	x2			
	HDMI OUT (2.0)	x1			
	S/PDIF	x1			
	LINE OUT (3.5mm)	x1			
	MIC IN (3.5mm)	x1			
1/(Rear)	USB-A (3.0) Only Android	x1			
	USB-A(3.0)	x1			
	USB-A(2.0)	x1			
	USB-B (3.0) For Touch	x1			
	USB-C (DP Alt Mode) IN	x1 (Up to 5V/3A/AudioNideo/USB2.0/Touch/Mic/Camera/LAN Network Sharing)			
	DP(1.2)	x1			
	HDMI (2.0)	x2			
	RS232C (D-SUB9)	x1			
	SDCard (Internal)	x1			
Accessories	Power Cord	1 pcs			
	Touch Pen	2pcs			
	Remote Controller	1 pcs			
	HDMI cable	1 pcs			
	Touch USB cable	1 pcs			
	NFC Card	2pcs			
	Type C cable	1 pcs			
Environmental Conditions	Operation Temperature	0°C-40°C			
	Operation Humidity	20%-80%			
	Storage Temperature	-20°C-60°C			
	Storage Humidity	20%-80%			
	Altitude Below	Below 5000 meters			
Optional Module	OPS Slot	80 Pin OPS slot (Intel Standard)			
	WIFISlot	Wi-Fi 6, Bluetooth 5.2			
Sensor	Light sensor	Yes			
	Human Presense Sensor	Yes			
	Pen Trigger	Yes			
	Temperature and humidity	Yes			
	NFC	Yes			
Glass	Surface Hardness	Toughened Glass with Level7 of Mohs Standard			
	surface treatment	AG/AF			
	Bonding	Zero Gap(< 1mm)			



Hybrid 5000

Specifications

Hybrid 5000 Series Entry				
		65"	75"	86"
	Model Name	AHA-HD50-65	AHA-HD50-75	AHA-HD50-86
Display	Resolution	3840(H) X 2160(V)		
	Refreshing Frequency	60Hz		
	Display Color	1.078		
	NTSC	72%		
	Contrast Ratio (typ)	5000:1(VA)	5000:1(VA)	4000:1(VA)
	Viewing Angle	178° (H/V)		
	Back light Unit	DLED		
	Brightness with glass (center)	4QQcd/m'		
	LifeTime	50000 Hours		
System	System Version	Android 14 & EDLA		
	Main Chip	RK3576		
	CPU	Octa-core: Cortex A72*4 (MAX : 2.3GHz)+Cortex A53*4 (MAX : 2.2GHz)		
	GPU	ARM Mali G52 MC3 GPU (MAX : 950MHz)		
	RAM	8GB		
	ROM	64GB		
	UI&UX	4K		
Touch	Sensing Type	Infrared touch technology		
	System	Windows 11 / Mac 10.10,..10.16 /Linux/ Chrome		
	Touch Tool	Hand or other Solid Object (Pen tip> cl>3.0mm)		
	Accuracy	±1mm (over 90% Area)		
	Touch point	40 Points (Windows) 32 Points (Android) 1 Point (MAC, Linux, Chrome Support Single Point)		
	Minimum Object Size (Passive pen)	3mm		
	WritingHeight	s2ms		
	Interpolation Resolution	32768(W)•32768(D)		
	Report Rate	200Hz		
	Response Time	s5ms		
	Palm Rejection	N/A		
	Passive pen pressure	N/A		
	Touch Height	<2mm (over 90% Area)		
Audio	Speaker	2x20W		
	Speaker Type	Built-in Speaker, front facing		
	Subwoofer	NA		
	MIC	NA		
Power	Power Requirements	100-240V~50/60Hz		
	Standby Power	<0.5W		
	HDMI (2.0)	x1		
1/0 (Front)	USB-A(3.0)	x3		
	USB-8 (3.0) For Touch	x1		
	USB-C	x1 (only support USB3.0 in, no PD and no video etc.)		

Hybrid 5000 Series Entry				
		65"	75"	86"
	Model Name	AHA-HD50-65	AHA-HD50-75	AHA-HD50-86
1/0 (Bottom)	VGAIN	x1		
	VGA Audio IN (3.5mm)	x1		
	LAN(RJ45) IN/OUT (1G)	x2		
	HDMI OUT (2.0)	x1		
	S/PDIF	x1		
	LINE OUT (3.5mm)	x1		
	MIC IN (3.5mm)	x1		
1/0 (Rear)	USB-A (3.0) Only Android	x1		
	USB-A(3.0)	x1		
	USB-A(2.0)	x1		
	USB-8 (3.0) For Touch	x1		
	USB-C (DP Alt Mode) IN	x1 (Up to 5V/3A/Audio/Video/USB2.0/Touch/Mic/Camera/LAN Network Sharing)		
	DP(1.2)	x1		
	HDMI (2.0)	x2		
	RS232C (D-SUB9)	x1		
	SDCard (Internal)	x1		
Accessories	Power Cord	1 pcs		
	Touch Pen	2pcs		
	Remote Controller	1 pcs		
	HDMI cable	1 pcs		
	Touch USB cable	1 pcs		
	Type C cable	1 pcs		
Environmental Conditions	Operation Temperature	0°C-40°C		
	Operation Humidity	20%-80%		
	Storage Temperature	-20°C-60°C		
	Storage Humidity	20%-80%		
	Altitude Below	Below 5000 meters		
Optional Module	OPS Slot	80 Pin OPS slot (Intel Standard)		
	WIFISlot	Wi-Fi 6, Bluetooth 5.2		
Sensor	Light sensor	N/A		
	Human Presense Sensor	N/A		
	Pen Trigger	N/A		
	Temperature and humidity	N/A		
	NFC	N/A		
Glass	Surface Hardness	Toughened Glass with Level7 of Mohs Standard		
	surface treatment	AG/AF		
	Bonding	Zero Gap(< 1mm)		